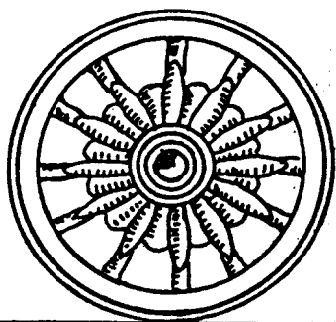
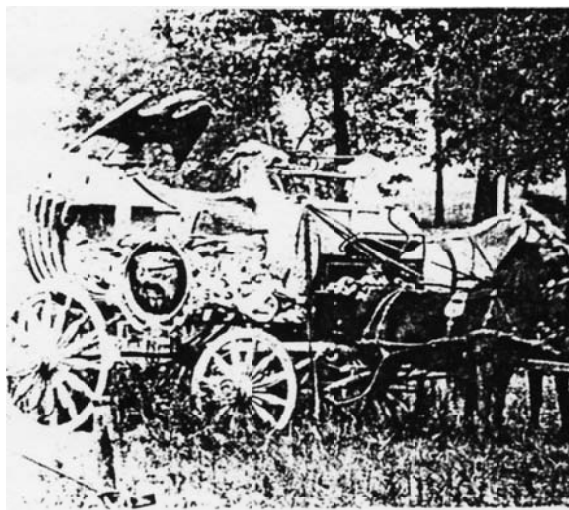
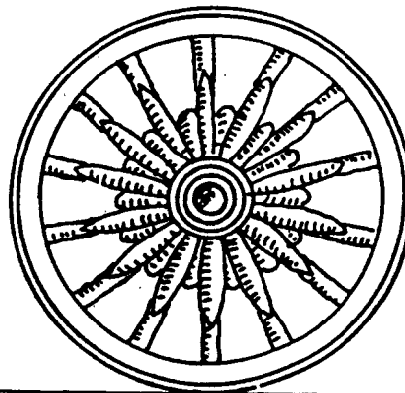


SIDE ELEVATION



WHEEL  
DETAIL



Shell Pony Bandwagon shown on the Hagenbeck-Wallace Circus in 1917. [P. M. McClintock photo from the Circus Farm Collection] The poor quality of the photo is a result of a very poor master plan in the CMB Plans collection.

**Sparks Circus/Hagenbeck-Wallace Circus  
Shell Bandwagon**

DATE: 1910/1917

SCALE: 1/2" = 1'

SCANNED & REVISED:  
08/24/2004

Pg 1 of 4

**Circus Model Builders**

Drawn By  
Charles J. Lockier, CMB 97

DRAWING NUMBER

**#0207**

This is a shell bandwagon, pony size. The information that I have has it on Sparks Show in 1910 and Hagenbeck Vallace in 1917 but I will venture to say this wagon trouped quite a few years before these dates when you look at its design.

These drawings are made in halfinch scale and on Page 1, you will see that the wagon was quite heavily carved. The wheels also are of quite an old vintage.

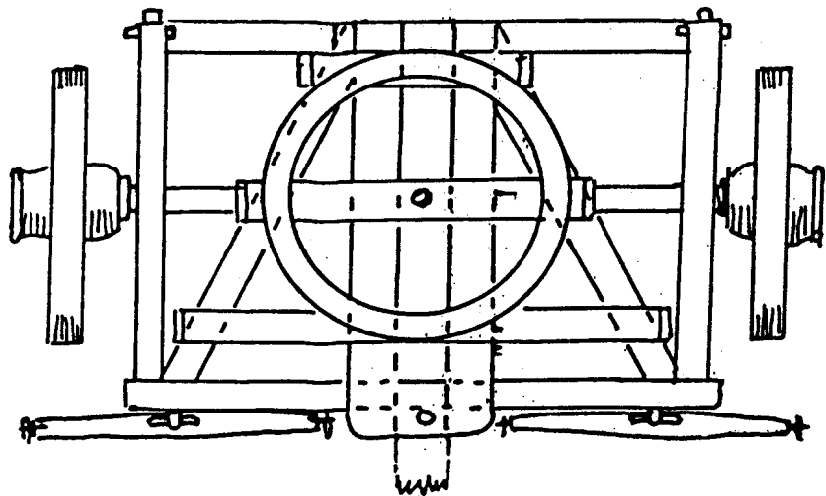
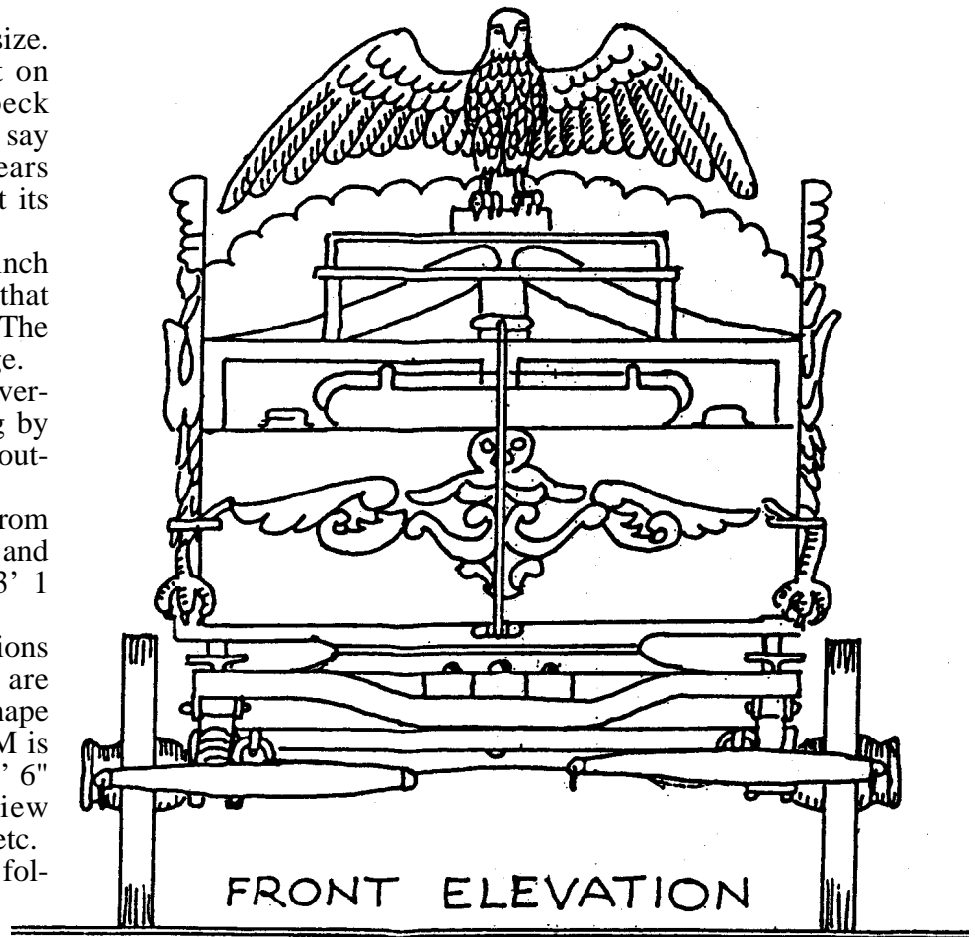
On page 3, you will see that the overall size of the body was 12' 6" long by 6' 6" wide and the overall width to outside edge of wheel flubs was 8 feet.

The overall height of the wagon from road to top of eagles head was 9' 3" and from ground to wagon floor was 3' 1 1/2".

The top elevation shows the positions of seats. The two middle seats A, are 17" x 5' 11" and seat E is circular shape to fit in rear shell. The drivers seat M is 3' 6" x 12" the foot board N is also 3' 6" long by 9" wide. The cut-away view gives an idea of braces, seats, posts, etc.

A rundown of these parts are as follows:

- A - Seats.
- B - Center post to hold eagle.
- C - Side braces for post.
- D - Circular brace that goes all around rear section.
- E - Rear seat circular shape.
- F - Floor of wagon.
- G - Batten running full length of each side of wagon to support seats.
- H - Batten along side above floor.
- J - Front of wagon.
- K - Floor of drivers seat.
- L - Base for driver seat.
- M - Drivers seat.
- N - Foot board.



## Sparks Circus/Hagenbeck-Wallace Circus Shell Bandwagon

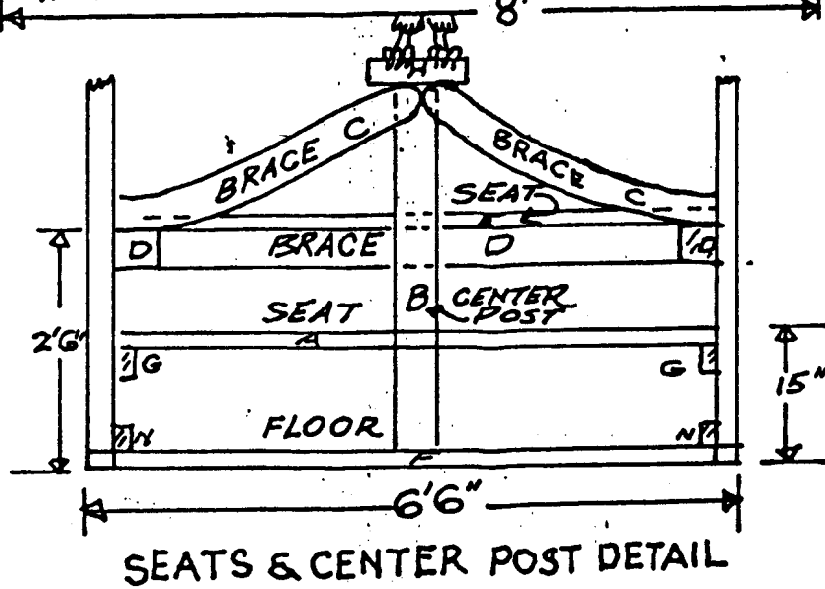
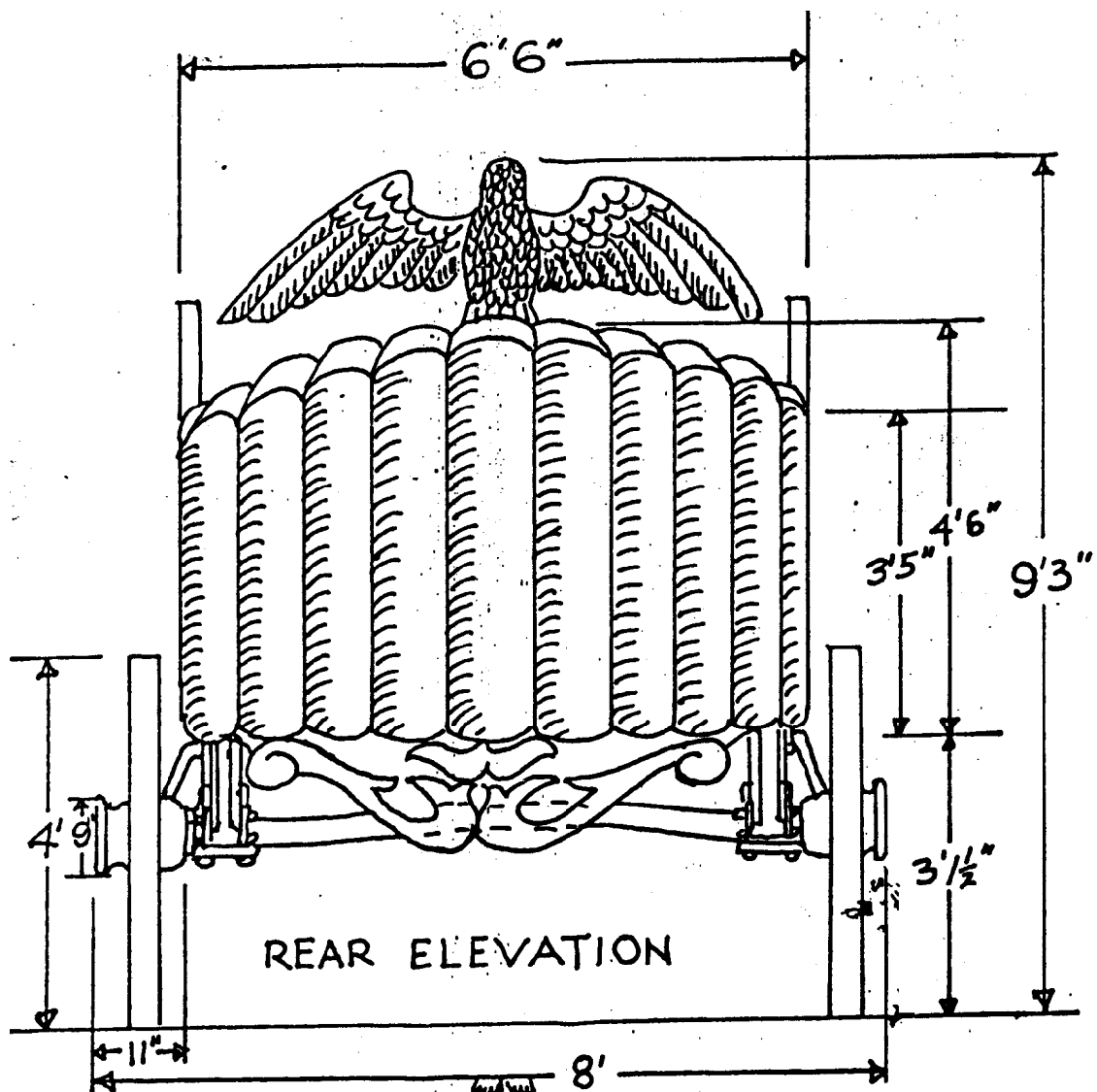
Pg 2 of 4

SCALE: 1/2" = 1'

SCANNED & REVISED:  
08/24/2004

DRAWING NUMBER  
**#0207**





# **Sparks Circus/Hagenbeck-Wallace Circus** **Shell Bandwagon**