

Photo No. 1 – This photo show the condition of Wagon No. 4 at the Circus World Museum in about 1975.

Again we are to thank member Ed Grimminger of Altoona, Pa. for another great plan for us to work from. This wagon has a little history and I shall share with you what I know of it.

As I understand this wagon was built for the Sells - Floto Circus and at the closing of this show the wagon was shifted to the great Hagenbeck-Wallace Circus, until this it was stranded in California. Later the wagon was put in use with the Arthur Bros. Circus and that was the last railroad circus that this wagon was used. Since then it has been seen in movie and TV films until the Circus World Museum obtained it. It was then entirely renovated and now is again useful.

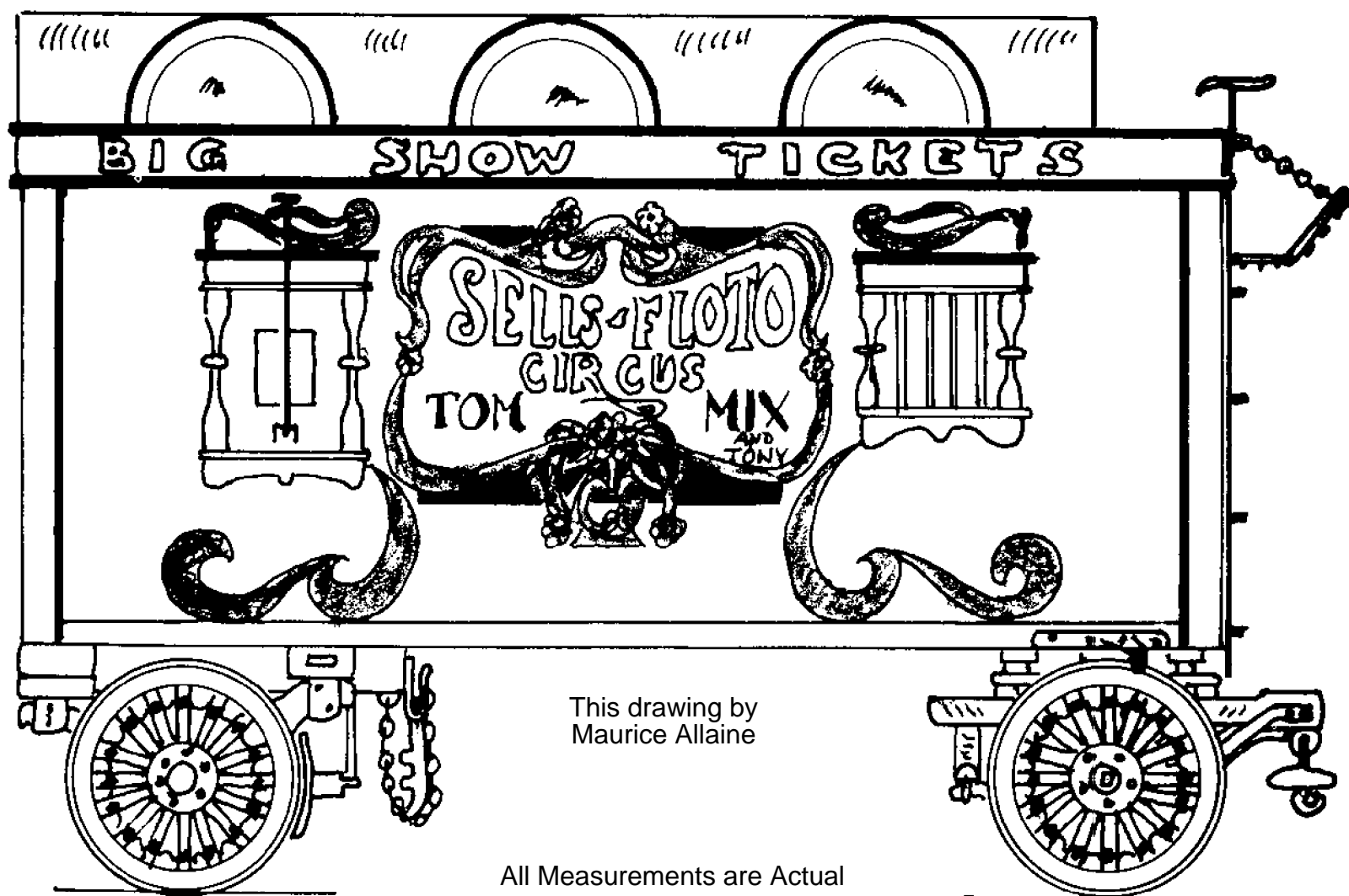
Ed Grimminger furnished us with some fine photos of this and I have made notations in the plans to what photo to refer to. I also had a talk with Albert Conover and he also has sent very interesting photos on this wagon. On the Conover photos we have interesting dates about the shows this wagon was with.



Photo No. 2 – The front painted for the movies dated 1966.

Sells-Floto Ticket Wagon No. 4			
DATE: 1966	SCALE: 1/2" = 1'	SCANNED & REVISED: 04/22/02	Pg 1 of 10
Circus Model Builders			
Drawn By Ed Grimminger & Maurice Allaine			DRAWING NUMBER #0245

Figure 1



Notes:

Body Color - White

1/2 Round Molding - Red

All corners are rounded with 1" - 1/2" round molding each
side 3 5/8" between and painted gold

**Sells-Floto
Ticket Wagon No. 4**

Pg 2 of 10

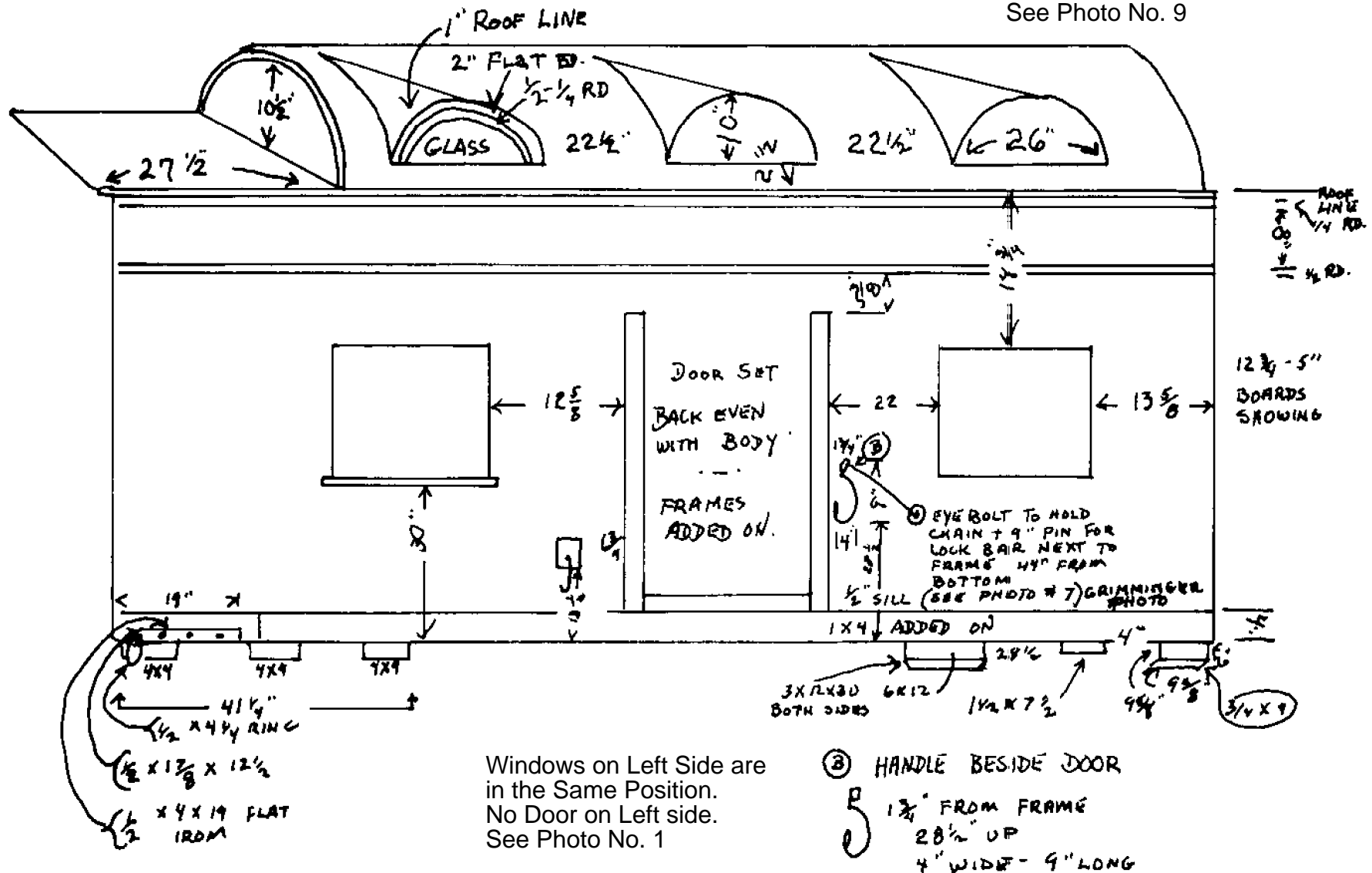
SCALE: 1/2" = 1'

SCANNED & REVISED:
04/22/02

DRAWING NUMBER
#0245

Right Side to Back

See Photo No. 9



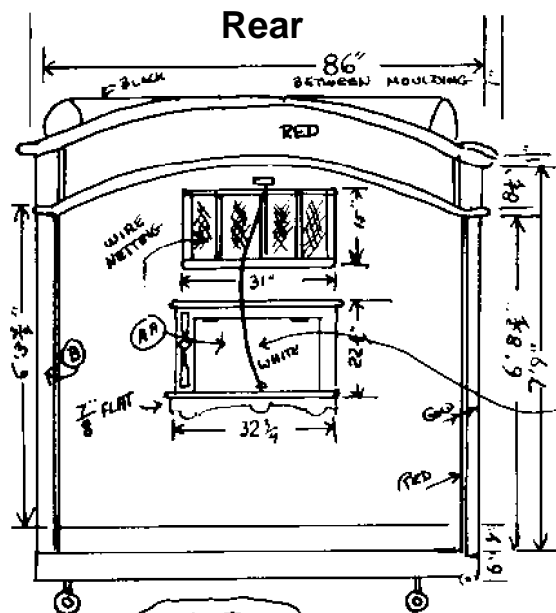
Sells-Floto Ticket Wagon No. 4

Pg 2 of 10

SCALE: 1/2" = 1'

SCANNED & REVISED:
0422/02

DRAWING NUMBER
#0245



See Photo 5

Window Detail

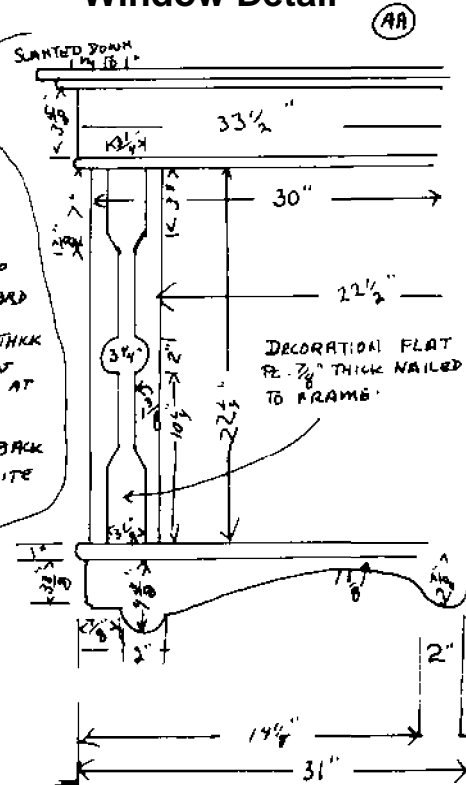
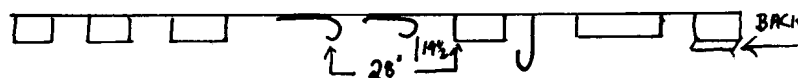
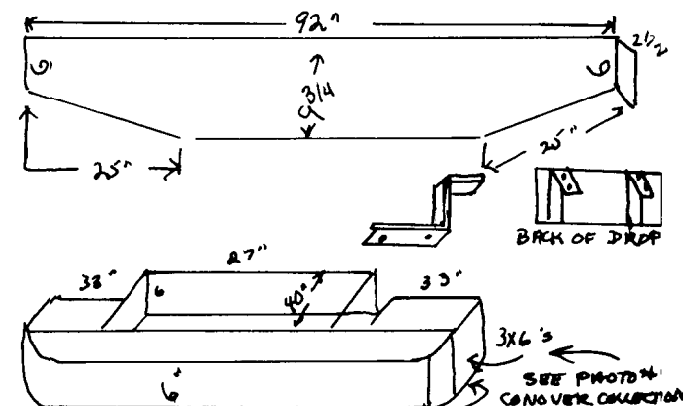


Photo No. 5 – At Circus World Museum (Gremminger Photo)

NOTE
LENGTH FROM FRONT CROSS BEAM
TO BACK = 11' 11 1/8"

Sill 1 1/4" tp 1" by 2 1/4" X 33 3/4" Slanted Down
All Wooden Frames 7/8" Material
Rear windows on both sides measure the same.
Front windows on both sides are smaller 18 1/4" X 19" cover material.

Brake Beam



FLOOR AT REAR DROPS 6"
BETWEEN SPRINGS. THE BOTTOM CROSS
MEMBERS CUTOFF TO ALLOW FOR BOX

Sells-Floto Ticket Wagon No. 4

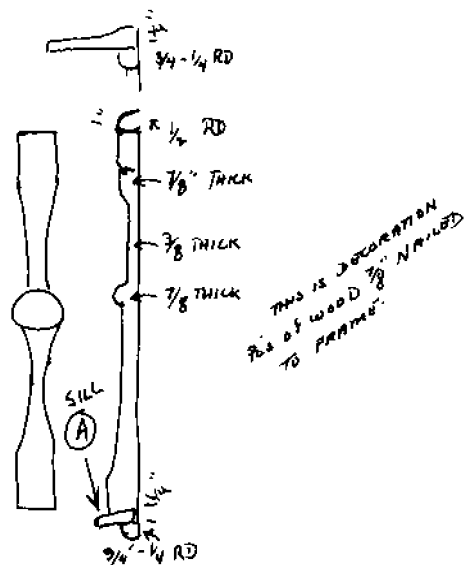
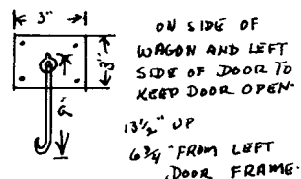
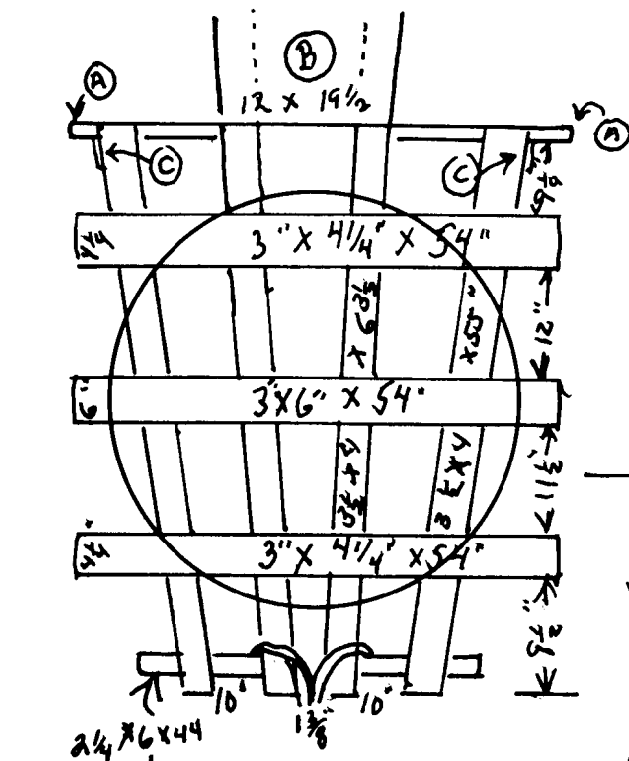


Photo No. 6 – At Circus World Museum
(Gremminger Photo)





SIDE SPRINGS

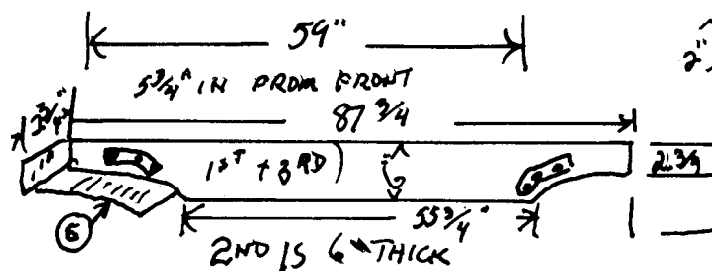
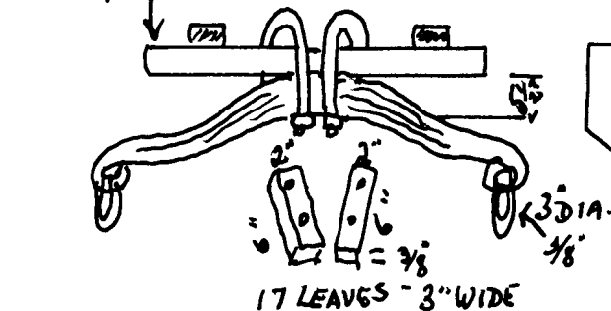
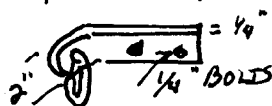
51" LONG
3" WIDE
5 1/2" HIGH @ ϕ
17 LEAVES @ ϕ
2 " @ FRONT
2 " @ BACK
1/2" x 13 U-BOLTS

2-54" WHEEL SECTIONS
21" WIDE 3/8" THICK OA.

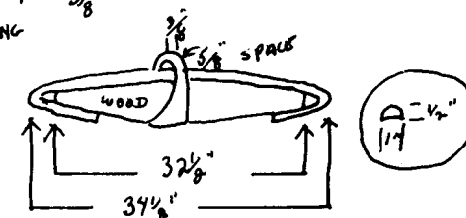
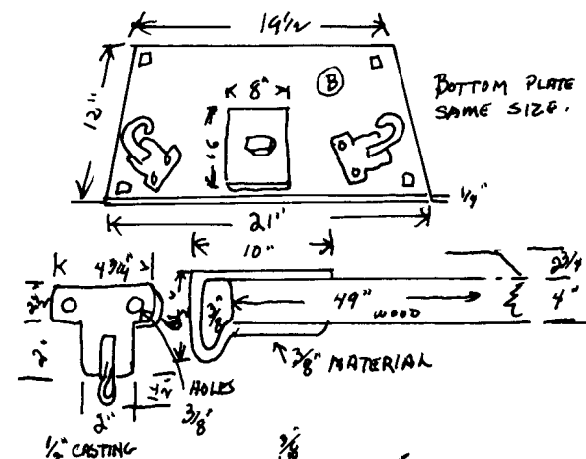
4-4" x 6" TIMBERS
BOTTOM BEAMS
LENGTH WISE.

CROSS SPRING
2-U-BOLTS - 1" x 16"
AXEL 3" x 3"
WHEEL FRONT = 32"
TIRES 6"

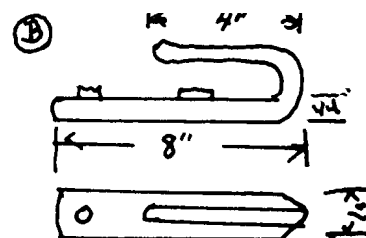
9"



Top Plate for Tongue Socket



RINGS 1/4" x 3 1/2" DIA



CHAIN FOR 3 16\"/>

Front Interior

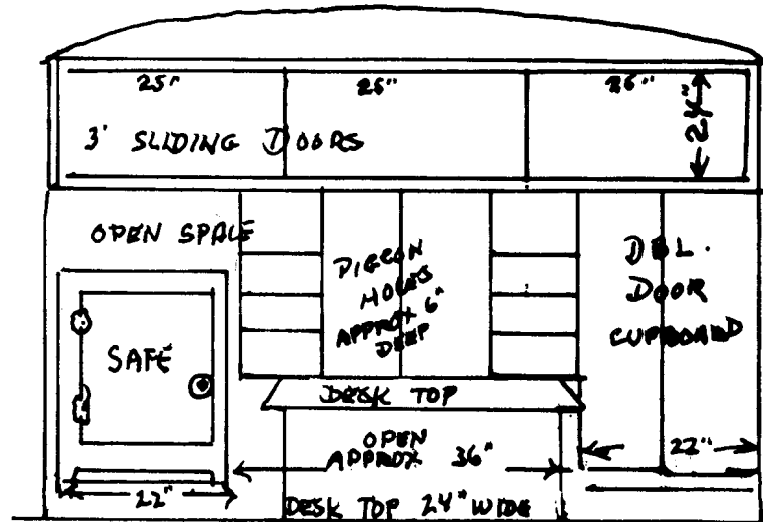
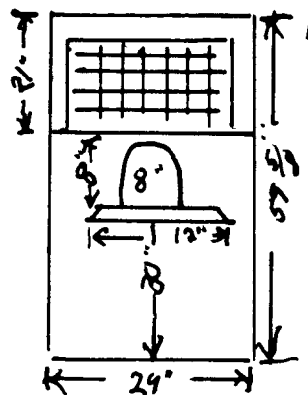


Photo No. 7 – At Circus World Museum
(Gremminger Photo)

Iron Door Opens In
1/2" Thick
Closed & Locked at
All Times
Fits into Same Frame
as Outside Door



Top is
Heavy New
Wire
Approximate
8" X 8"
Opening
Pay Open-
ing & Shelf
6" X 12"

Sells-Floto Ticket Wagon No. 4

Pg 8 of 10

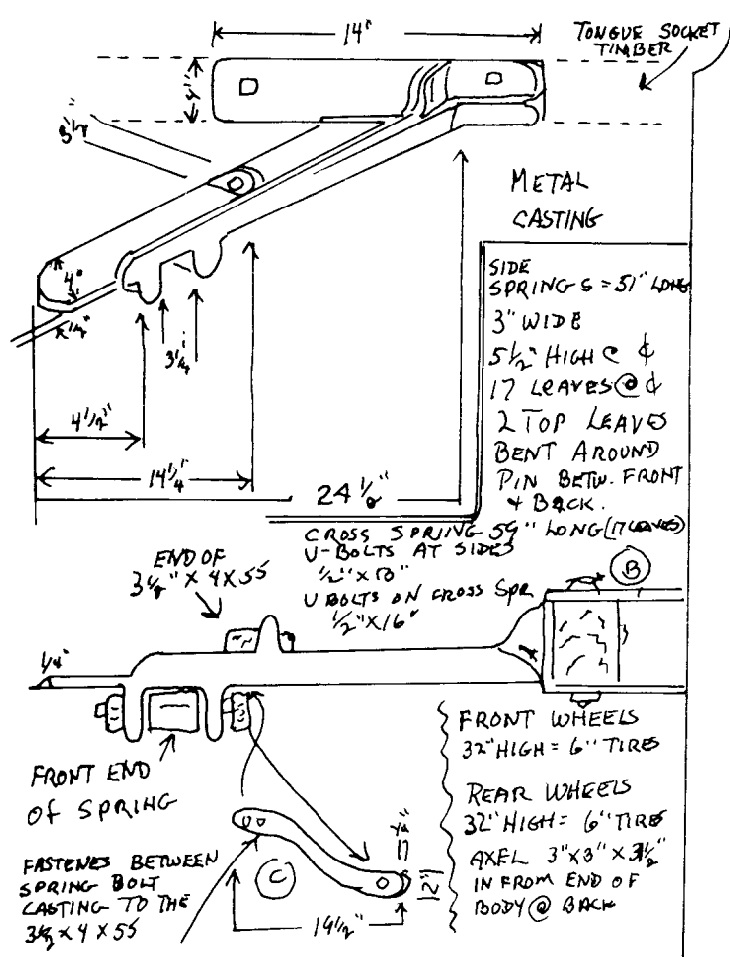
SCALE: 1/2" = 1'

SCANNED & REVISED:
0422/02

DRAWING NUMBER
#0245



Photo No. 8 – Gremminger Photo



Brake Assembly

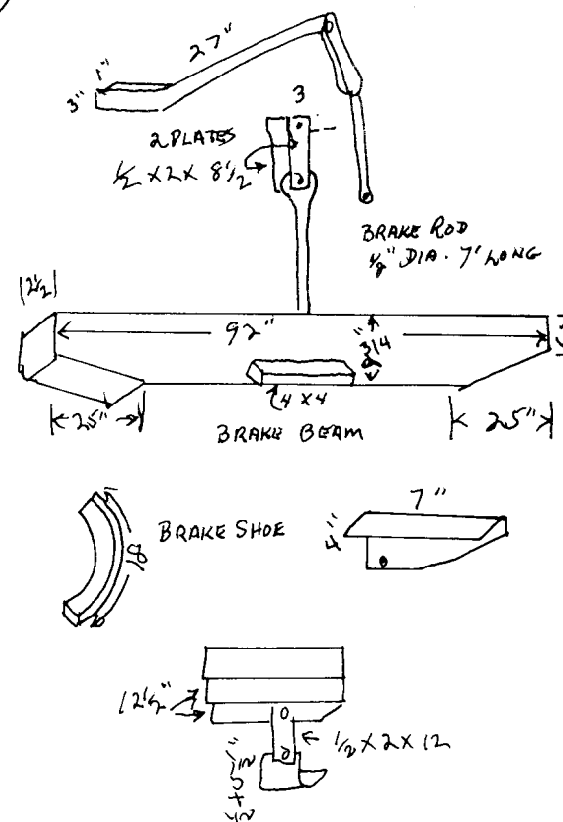


Photo No. 9 – Gremminger Photo

Sells-Floto Ticket Wagon No. 4

Pg 9 of 10

SCALE: 1/2" = 1'

SCANNED & REVISED:
0422/02

DRAWING NUMBER
#0245



Photo No. 10 – At Circus World Museum (Gremminger Photo)



Photo No. 11 – At Circus World Museum (Gremminger Photo)



Photo No. 12 – As it looked on the Hagenbeck-Wallace Circus in 1933

**Sells-Floto
Ticket Wagon No. 4**

Pg 10 of 10

SCALE: 1/2" = 1'

SCANNED & REVISED:
0422/02

DRAWING NUMBER
#0245