

Dimensions

18' 6" Long

7' 6" Wide

5' 9" High, front side

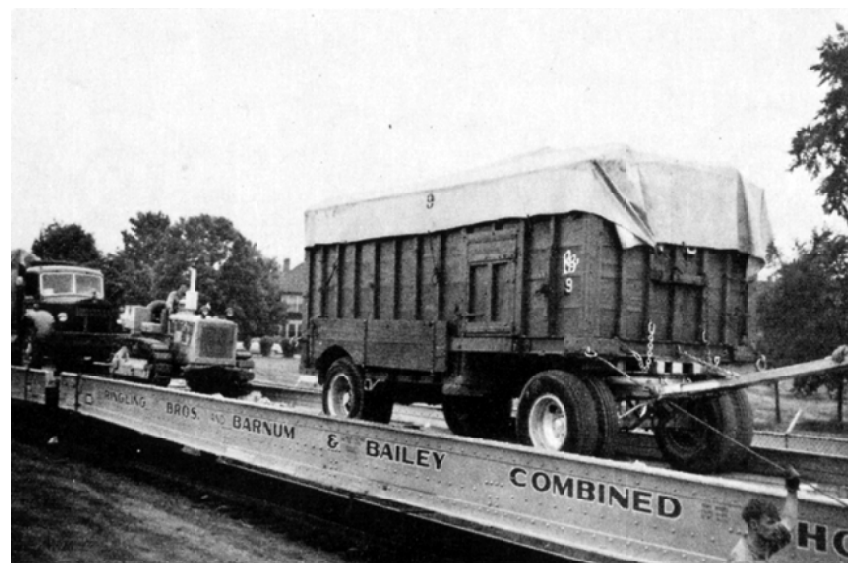
7' 6" High, rear side

Painted Ringling Red, after 1952 this wagon was then painted the same color of green as the Dining Dept. wagons. It had a dark green interior.

Wagon No. 9 was the old blacksmith and harness makers wagon. After the show replaced the baggage stock with motive power, this wagon then became the general repair shop. It was the personal wagon of Bill Yeskee, the shows master wagon builder and repairman. A rack located along one wall contained virtually every size nut and bolt that was required to maintain the equipment. Also, special racks were on the opposite wall to carry angle iron and channel of various sizes, plus several cupboards above these racks and on the back doors for other supplies.

There was a drill press mounted to the small door on the right side of the wagon. When the door was opened a belt drive was connected to a small gasoline engine located inside the wagon. A fly canvas was usually attached to the wagon and thus allowed most of the work to be performed in this area. Both sides had work benches that could be folded down.

Along with the derrick on #235 Mack truck and the welders in #241 GMC truck, this formed a very complete mobile shop and could meet the needs of most any situation that would arise. Also, one of the jeeps had an air compressor mounted on the back and was used primarily for tire repair.



RBBB General Repair Wagon No. 9

DATE: 1940s/50s

SCALE: 1/4" = 1'

SCANNED & REVISED:
08/18/02

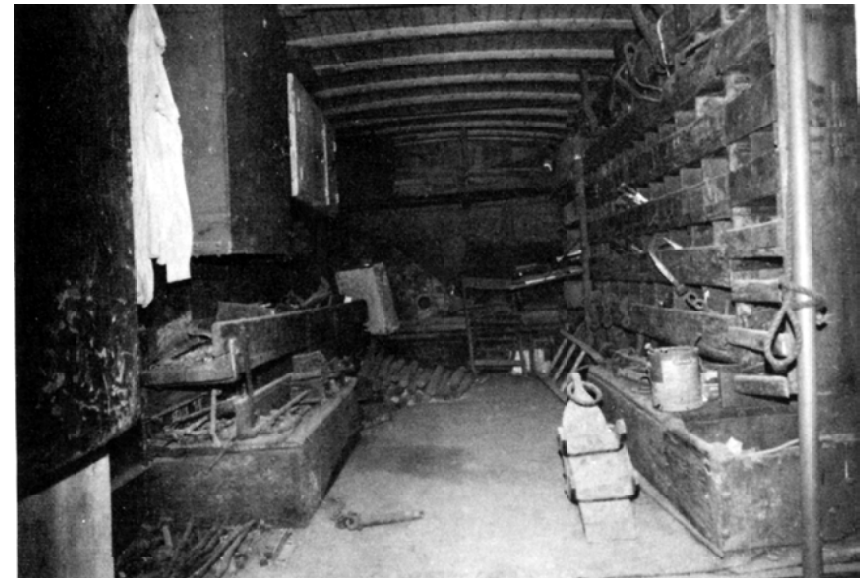
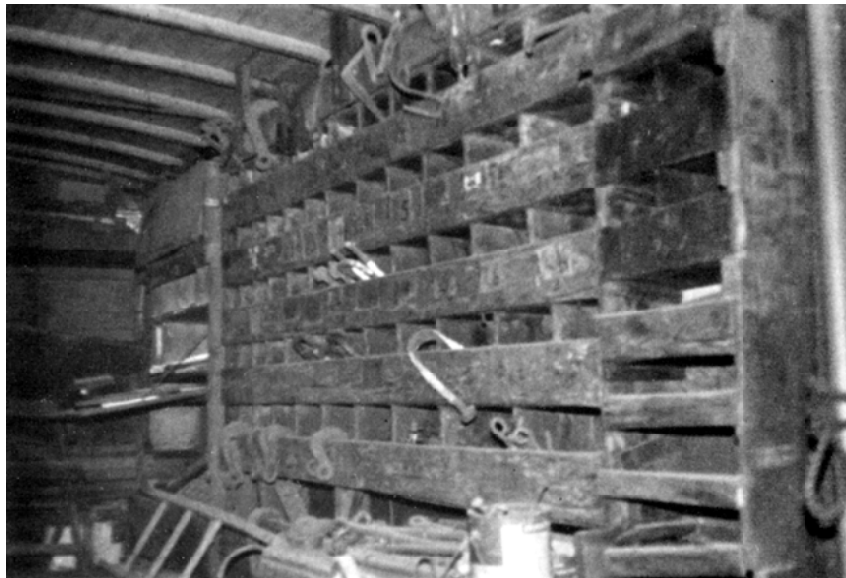
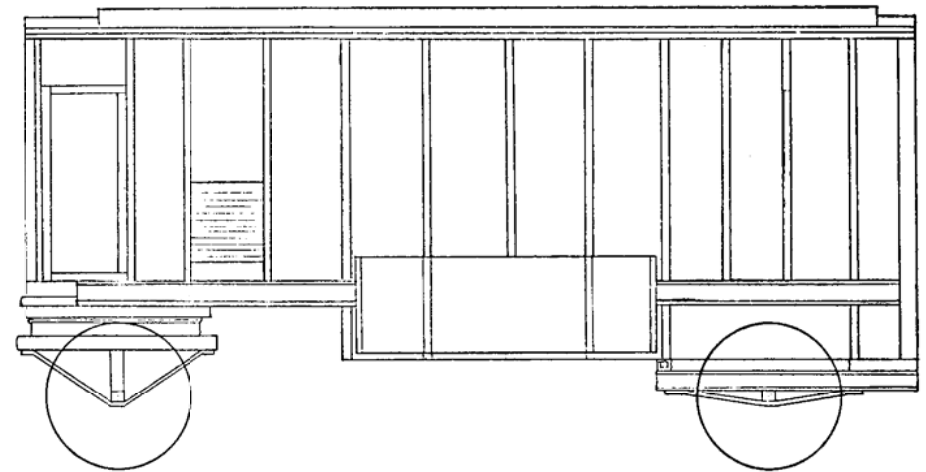
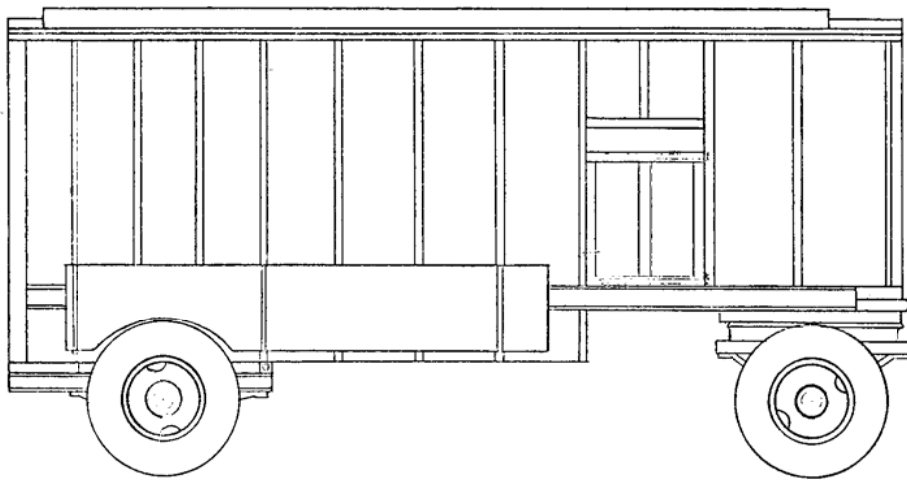
Pg 1 of 2

Circus Model Builders

Drawn By
Unknown

DRAWING NUMBER

#0264



RBBB General Repair Wagon No. 9

Pg 2 of 2

SCALE: 1/4" = 1'

SCANNED & REVISED:
08/18/02

DRAWING NUMBER
#0264