



Photo 1

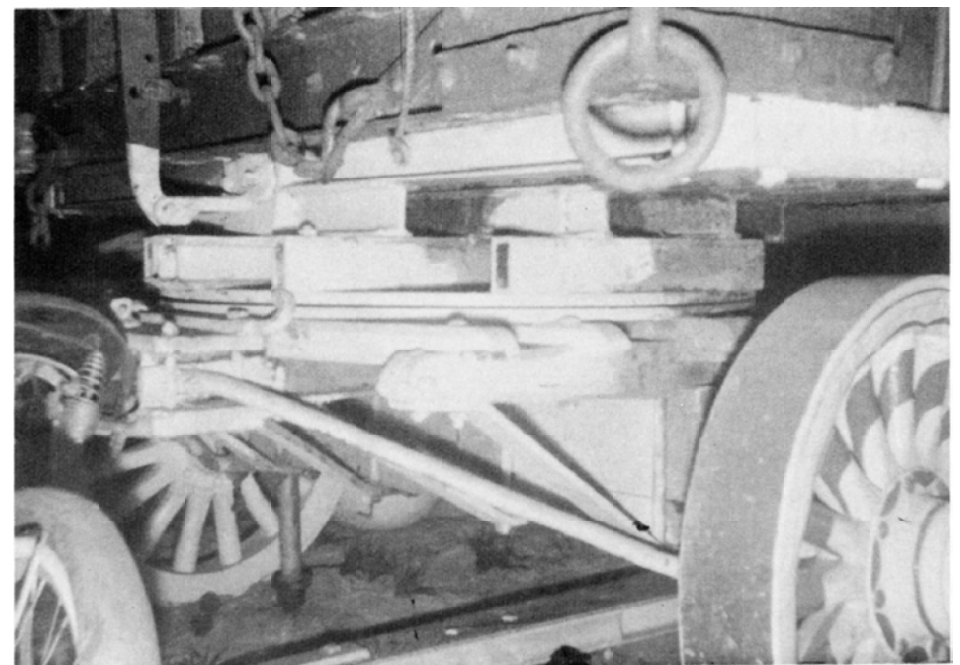


Photo 2

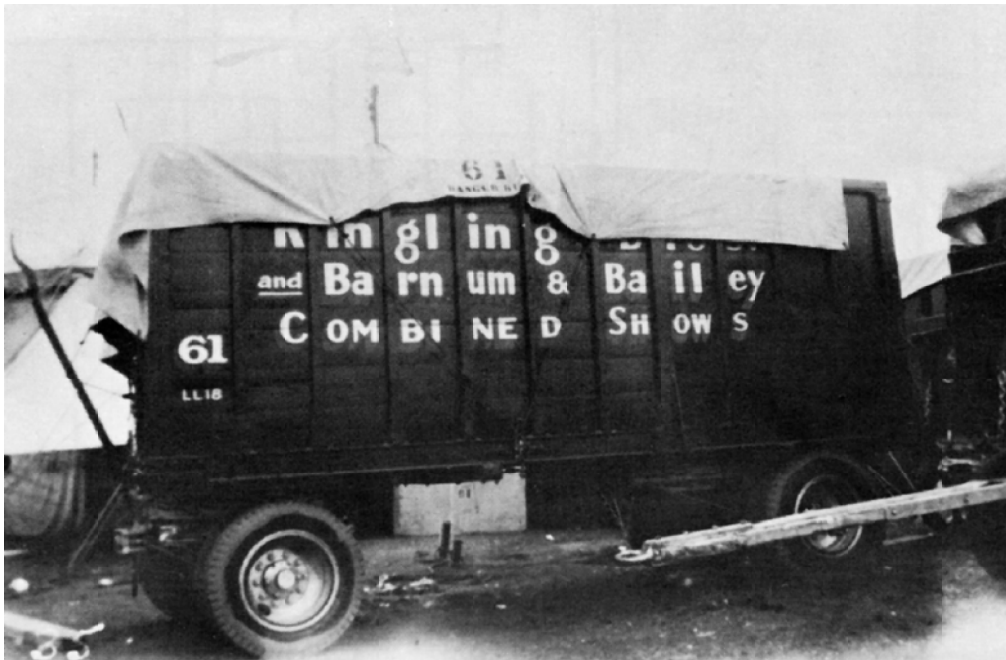


Photo 3

Ringling Bros. Barnum & Bailey wagon No. 61 was built by Bill Yeskee. It was used during the 1930's and 40's and was taken off the road when the tent show folded in the 50's. Records indicate it was used as a prop wagon. No. 61 is presently in the backyard display at the Ringling Museum in Sarasota.

Though the wagon has wooden wheels at the present time, it was mounted on pneumatic tires when it toured with the show. The tongue is ten feet long, four inches thick, and six inches wide and was equipped for tractor hook-ups.

Bill Myers has provided two photos.

Photo No. 1 shows a side view of the wagon

RBBB Prop Wagon No. 61

DATE: 1930/55	SCALE: 1/2" = 1'	SCANNED & REVISED: 06/01/2005	Pg 1 of 11
---------------	------------------	----------------------------------	------------

Circus Model Builders

Drawn By
Bill Myers & Bob Cline

DRAWING NUMBER
#0287

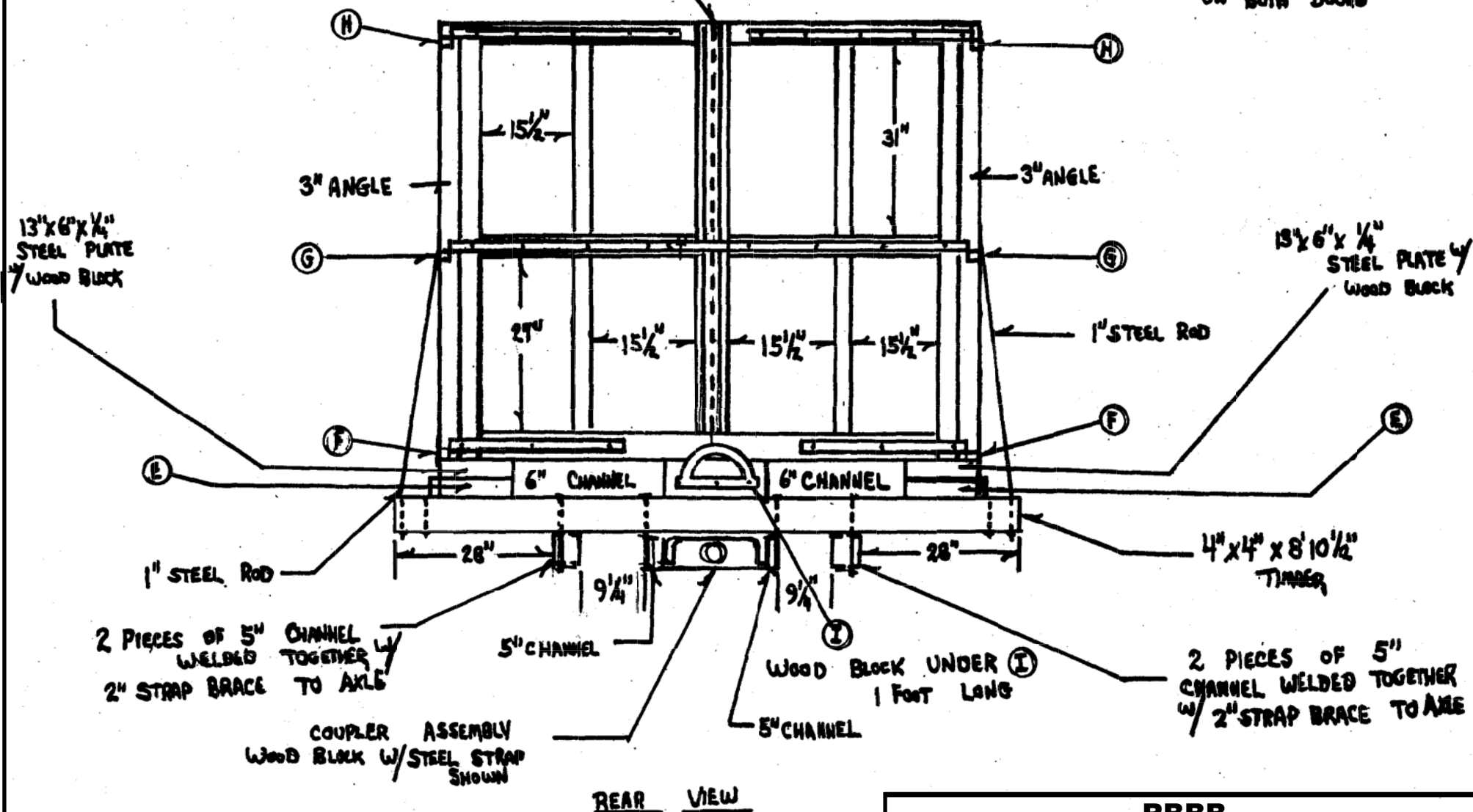


NOTE:

WOOD BRACES ON
DOORS ARE ALL
 $3\frac{1}{2}" \times 1\frac{1}{2}"$ LUMBER

$2\frac{1}{8}" \times \frac{1}{4}" \times 5'8"$
STEEL STRAP
BOLTED TO RIGHT DOOR
OVERLAPPING LEFT DOOR

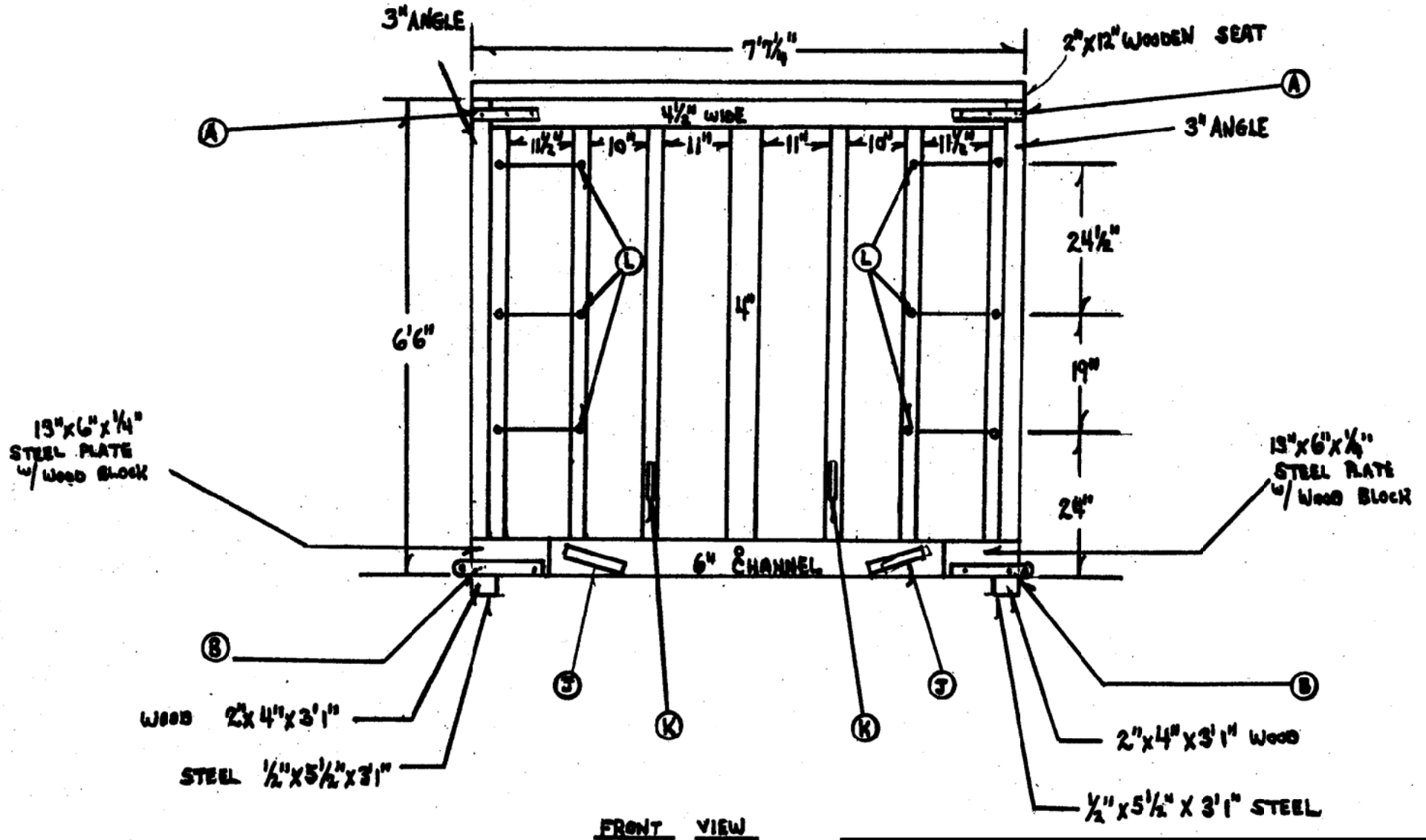
2" STRAP IRON HINGES
ON BOTH DOORS



REAR VIEW

RBBB
Prop Wagon No. 61

NOTE:
ALL WOOD BRACES
ARE $2\frac{1}{2}" \times 1\frac{1}{2}"$
LUMBER
EXCEPT AS NOTED



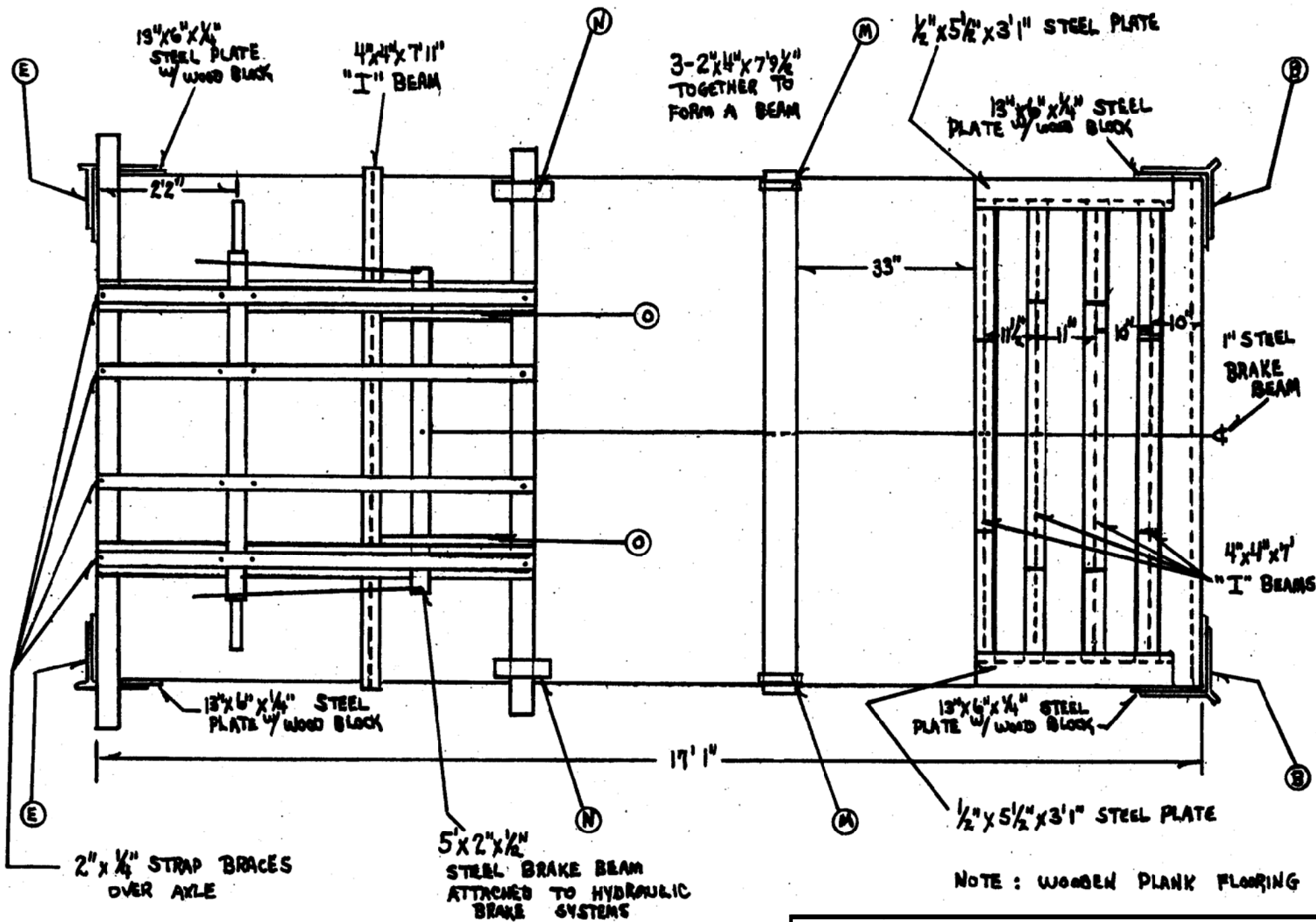
RBBB
Prop Wagon No. 61

Pg 4 of 11

SCALE: 1/2" = 1'

SCANNED & REVISED:
06/01/2005

DRAWING NUMBER
#0287



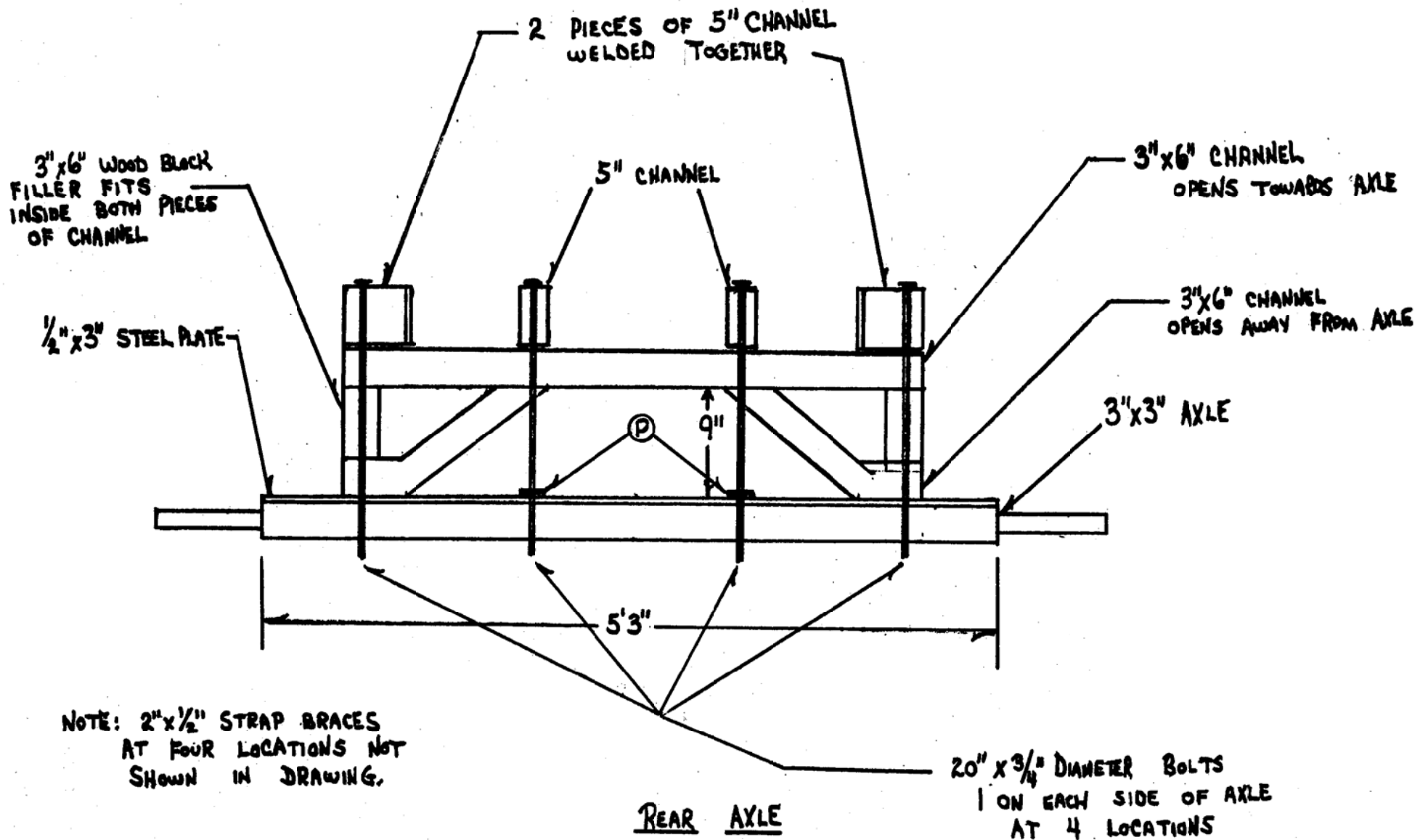
RBBB
Prop Wagon No. 61

Pg 5 of 11

SCALE: 1/2" = 1'

SCANNED & REVISED:
 06/01/2005

DRAWING NUMBER
#0287



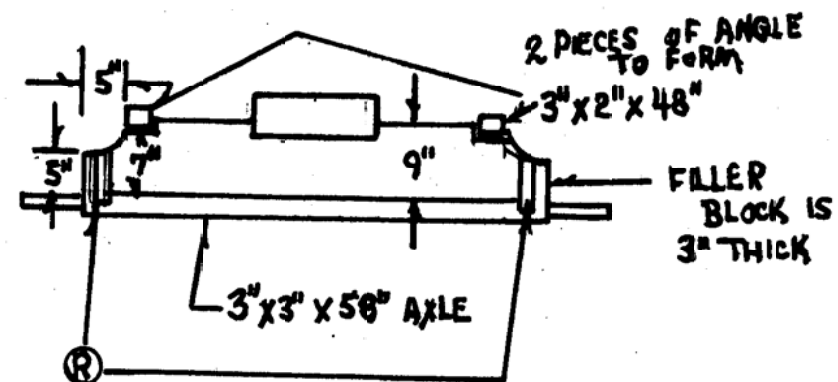
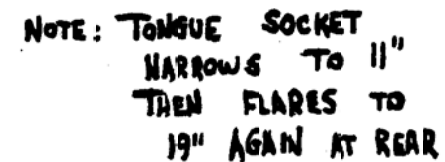
RBBB
Prop Wagon No. 61

Pg 6 of 11

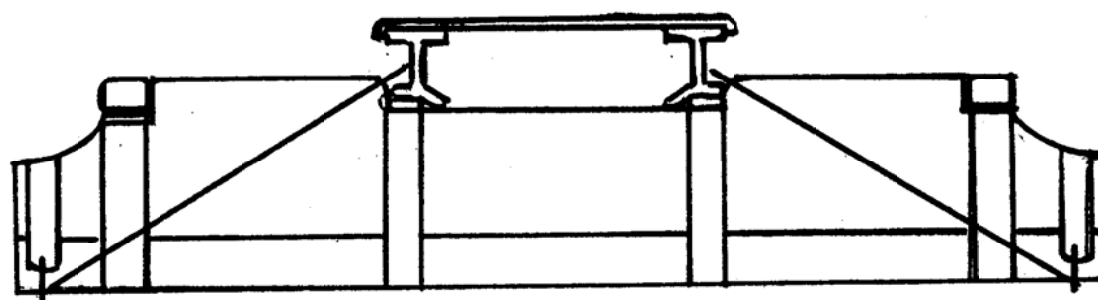
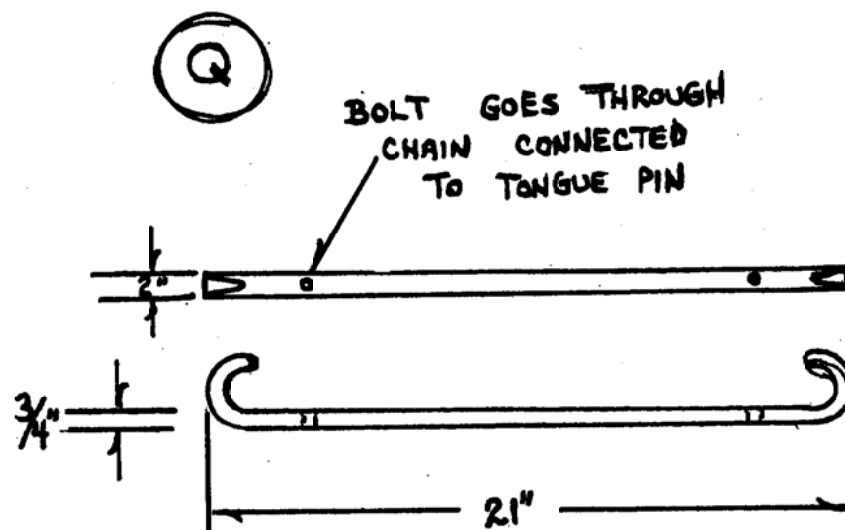
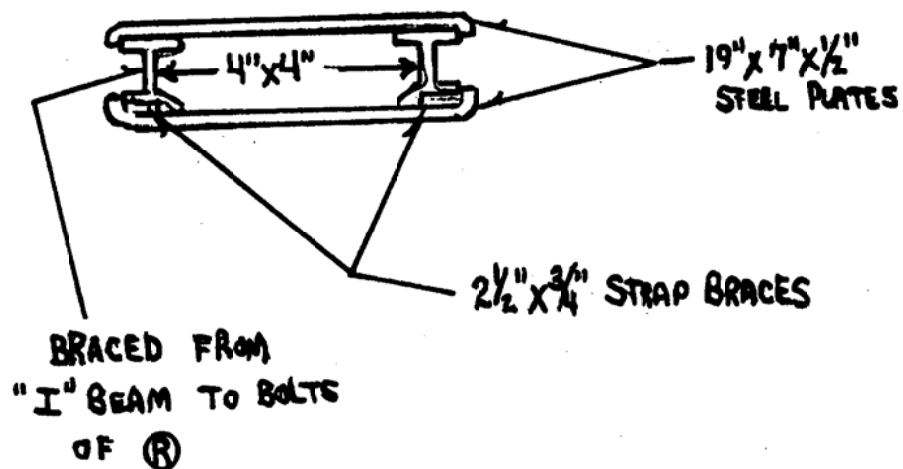
SCALE: 1/2" = 1'

SCANNED & REVISED:
 06/01/2005

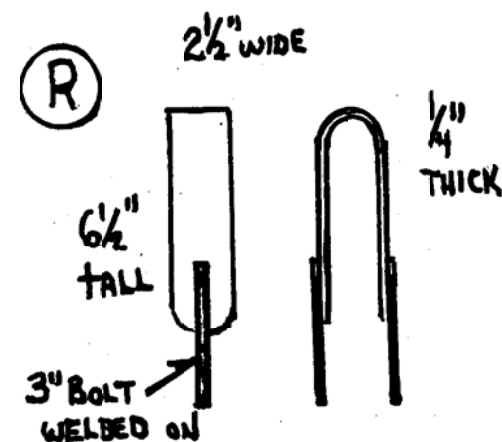
DRAWING NUMBER
#0287



TONGUE SOCKET

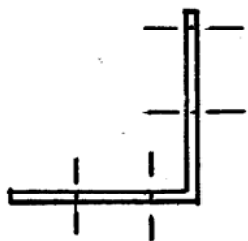


BRACE DIAGRAM



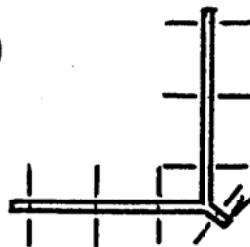
RBBB
Prop Wagon No. 61

(A)



12" x 2" x 1/4" STEEL

(B)



12" x 2" x 1/4" STEEL

LIP EXTENDS
2 1/2"

5" RING
3/4" MATERIAL

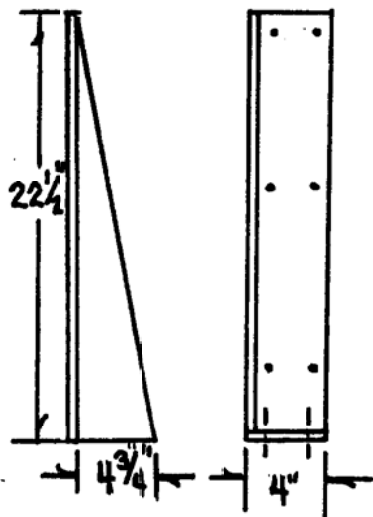
(C)



BOLTED AGAINST
6" CHANNEL

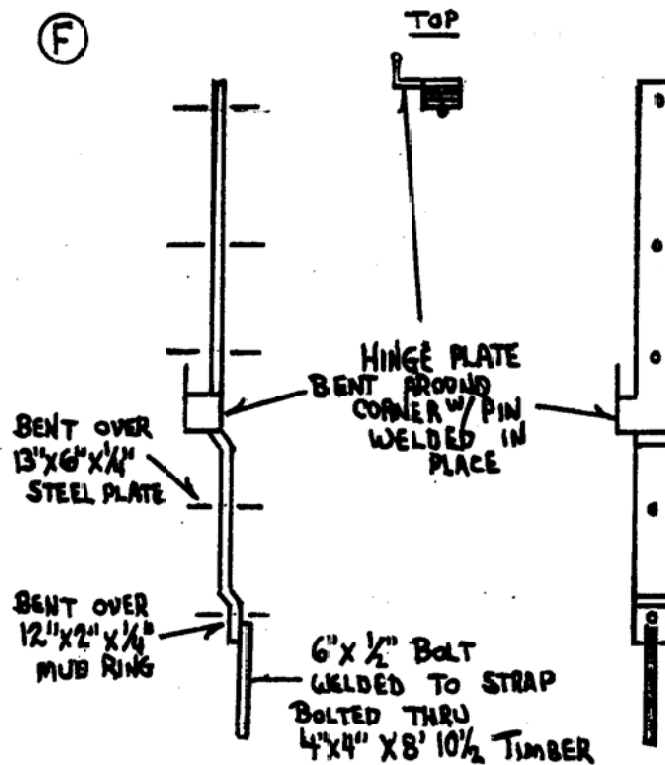
5" RING
3/4" DIAMETER

(D)



1/2" THICK STEEL

(F)



BENT OVER
13" x 6" x 1/4"
STEEL PLATE

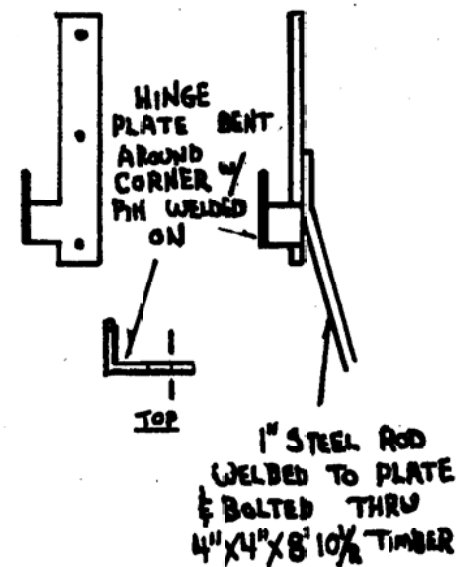
BENT OVER
12" x 2" x 1/4"
MUD RING

HINGE PLATE
BENT AROUND
CORNER W/ PIN
WELDED IN
PLACE

6" x 1/2" BOLT
WELDED TO STRAP
BOLTED THRU
4" x 4" x 8' 10 1/2" TIMBER

27" x 2" x 1/4" STEEL PLATE

(G)

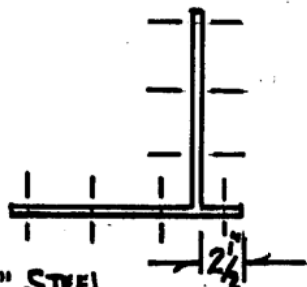


HINGE
PLATE BENT
AROUND
CORNER W/
PIN WELDED
ON

1" STEEL ROD
WELDED TO PLATE
& BOLTED THRU
4" x 4" x 8' 10 1/2" TIMBER

15" x 2" x 1/4" STEEL PLATE

(E)

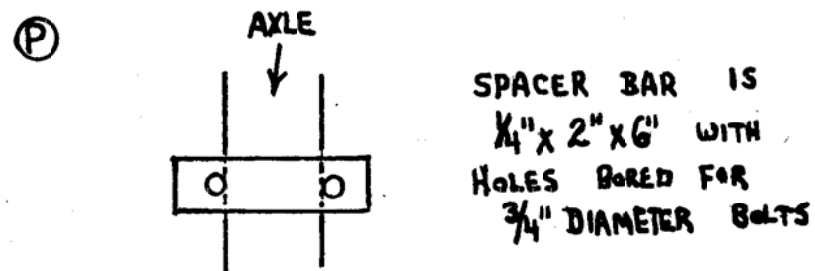
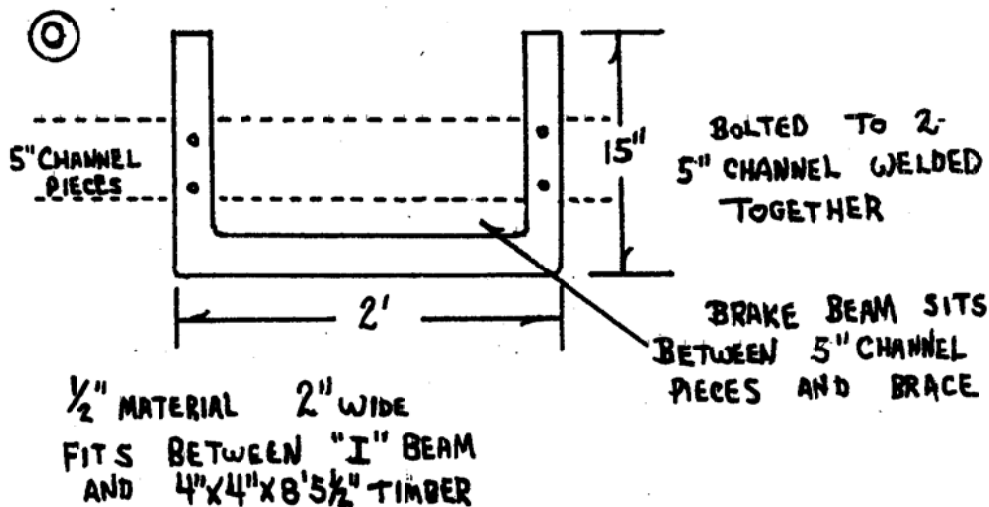
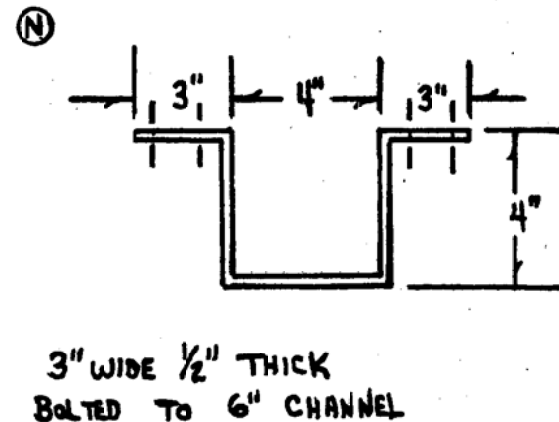
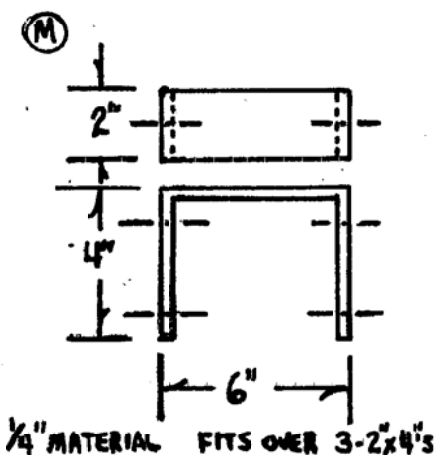
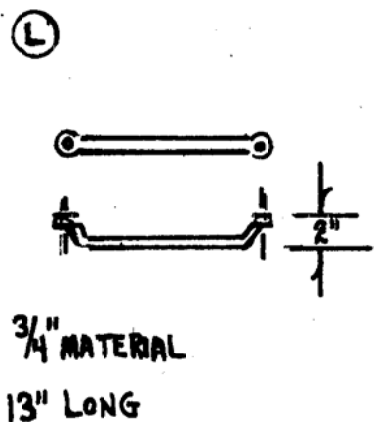
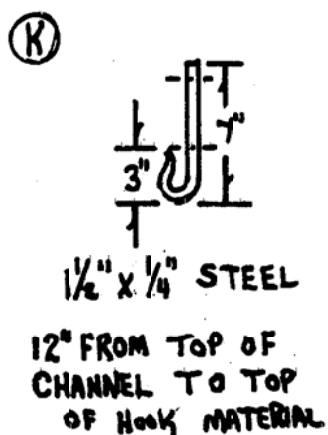
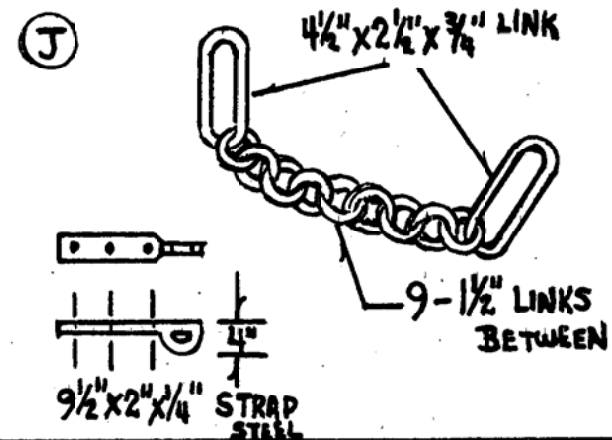
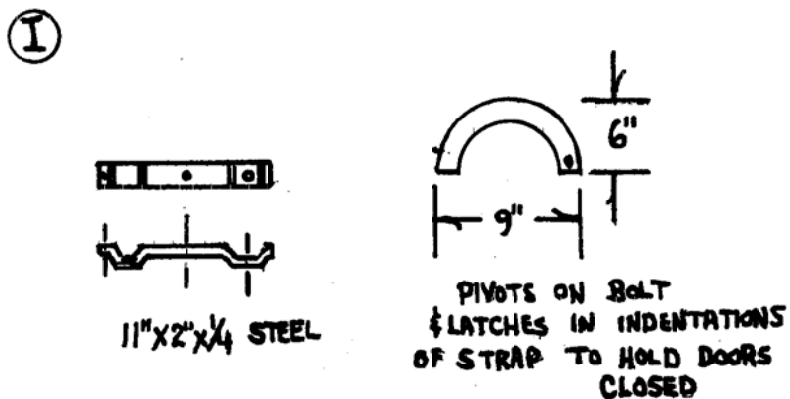
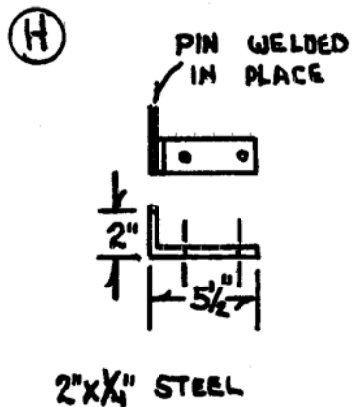


12" x 2" x 1/4" STEEL

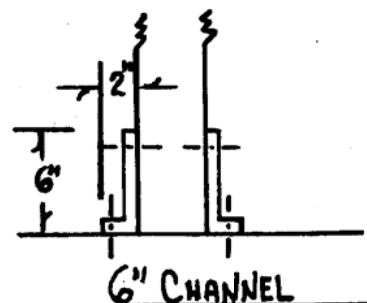
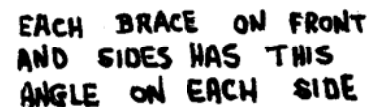
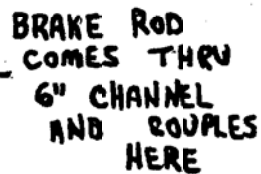
5" RING 3/4" MATERIAL

RBBB

Prop Wagon No. 61



RBBB
Prop Wagon No. 61



EACH ANGLE IS 1" WIDE
& BOLTED TO 6" CHANNEL

WAGON IS OPEN TOP
WOOD CONSTRUCTION
INSIDE - GRAY
WAGON - RED
UNDER GEAR - WHITE
LETTERING - WHITE
BLACK OUTLINE
GREEN SHADOW

RB
Prop Wagon No. 61