



This issues plan is of a very small trailer that had a very important job and that being to carry all the cookhouse equipment required to feed all the personnel on A.W. Stencells 1979 edition of the Martin & Downs Circus! The Martin & Downs Circus was a very well organized and pretty one ring tent show that travelled from coast to coast in Canada during the late 1970's and early 1980's. As is the case with many nice things, the Martin & Downs Circus is off the road and is now just a memory. I took the two pictures printed with the plan while visiting the show in New Brunswick, Canada.

This was a Wells Cargo trailer built in the united states and was purchased as used equipment by Mr. Stencell. He told me that when he bought it, it had not been used in the circus business, he also said that it turned out to be in very poor condition and they almost didn't get it back to the winter quarters in one piece! Apparently the roof came loose and started to come off and then the back doors fell off! Sounds like an exciting trip was had by all! However they did get it to winter quarters and after an extensive rebuilding this trailer went on tour with the Martin & Downs Circus for a number of years.

During the repairs, a side door was added and the interior was partitioned in order to allow for a small living compartment in the front of the trailer. Also a small window was put in the front to ventilate this compartment. The original back doors were replaced with one made of plywood and this was hinged at the top and opened upward and acted as an awning. The rear part of the trailer contained a gas cook range, refrigerator, sink, counters and a small R.V. type fridge that ran all the time off the propane tank on the front of the trailer. The dining top was a 20' x 20' push pole top and contained two standard circus style dining tables, each 8' long. These along with any extra items were carried on the floor between the cook range and counters. This trailer was towed behind a one ton truck that carried ponies and equipment for the side show. The main body was painted bright orange with a royal blue band at the top. There was a yellow ribbon separating the two and a series of yellow stars were painted on the blue band. The roof, frame and hitch were silver and the propane tank was green. The number seven was royal blue with yellow outline and was painted on a medium blue circle. The clown faces were white, yellow, red, blue and outlined in black. All in all a very pretty little circus trailer and proving that it doesn't have to be big to be good!

## Martin & Downs Circus Cook House Trailer

DATE: 1979

SCALE: 1/2" = 1'

SCANNED & REVISED:  
01/28/2007

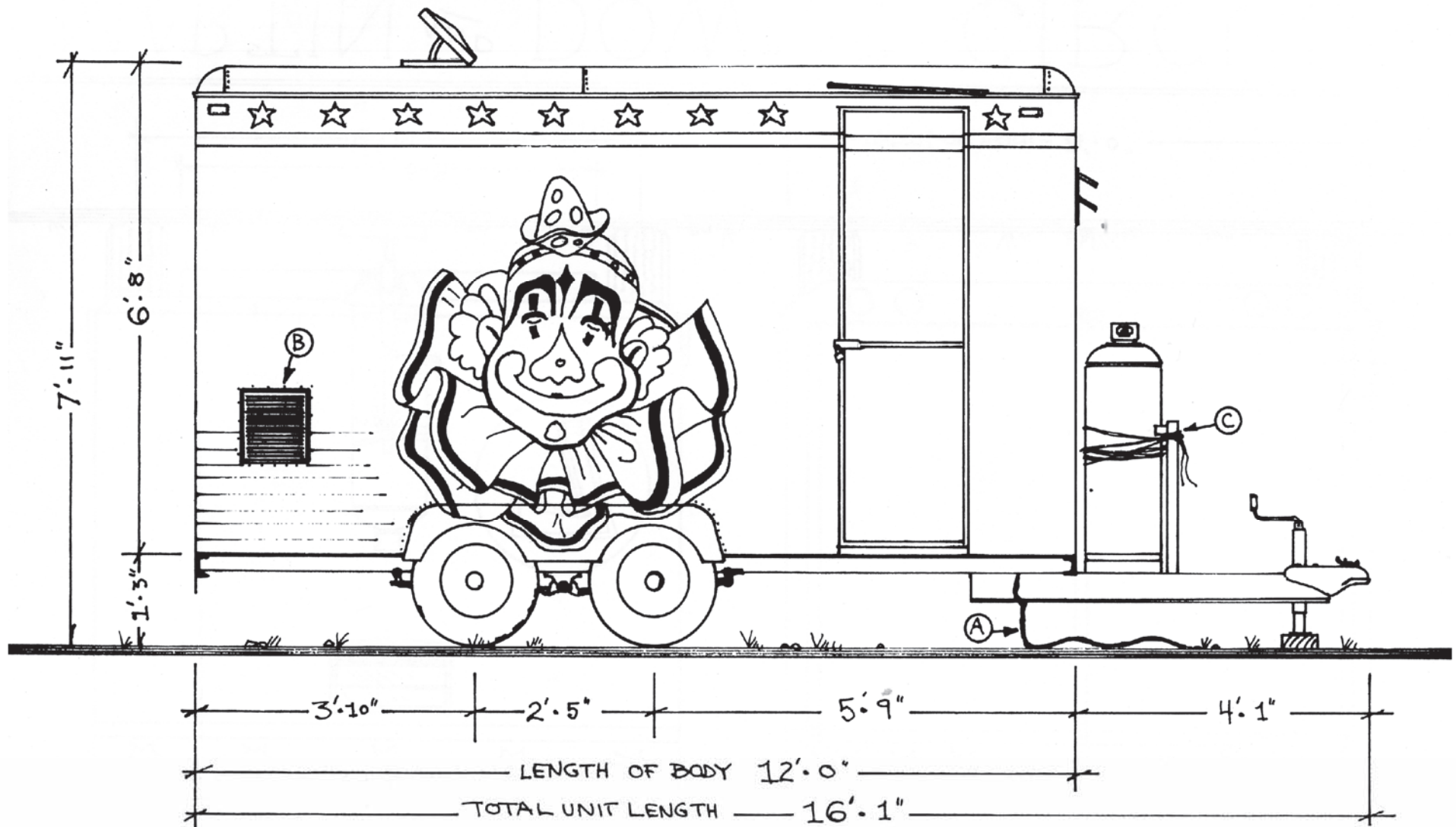
Pg 1 of 3

# Circus Model Builders

Drawn By  
M. Hartigan

DRAWING NUMBER  
**#0369**

# SIDE VIEW



## **Martin & Downs Circus Cook House Trailer**

Pg 2 of 3

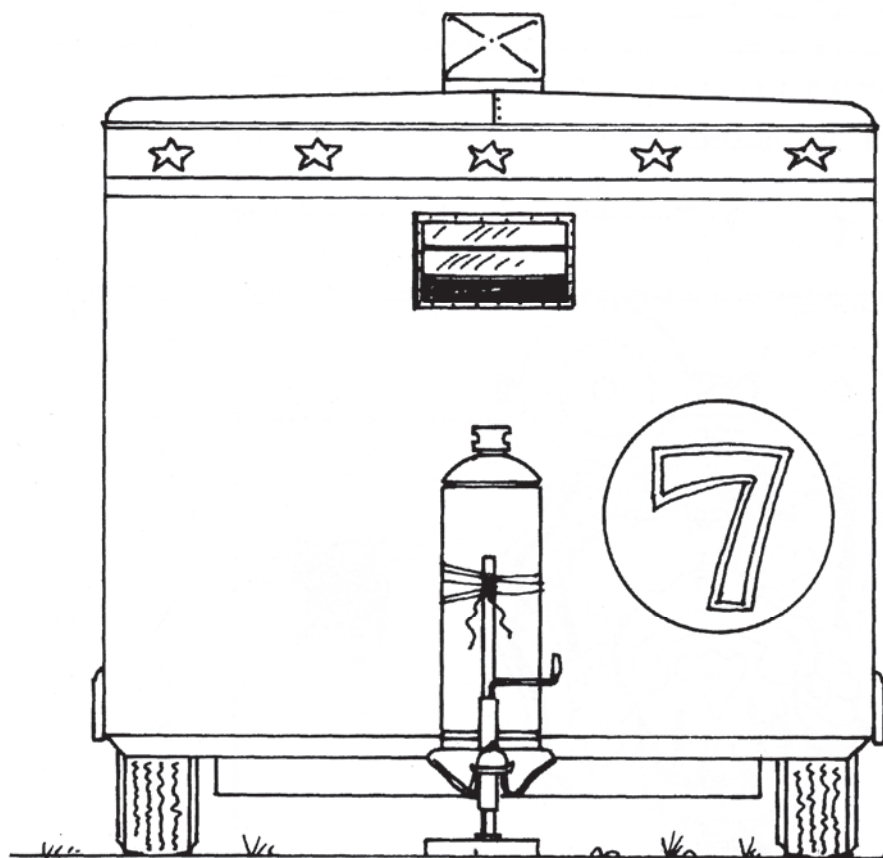
SCALE: 1/2" = 1'

SCANNED & REVISED:  
01/28/2007

DRAWING NUMBER  
**#0369**

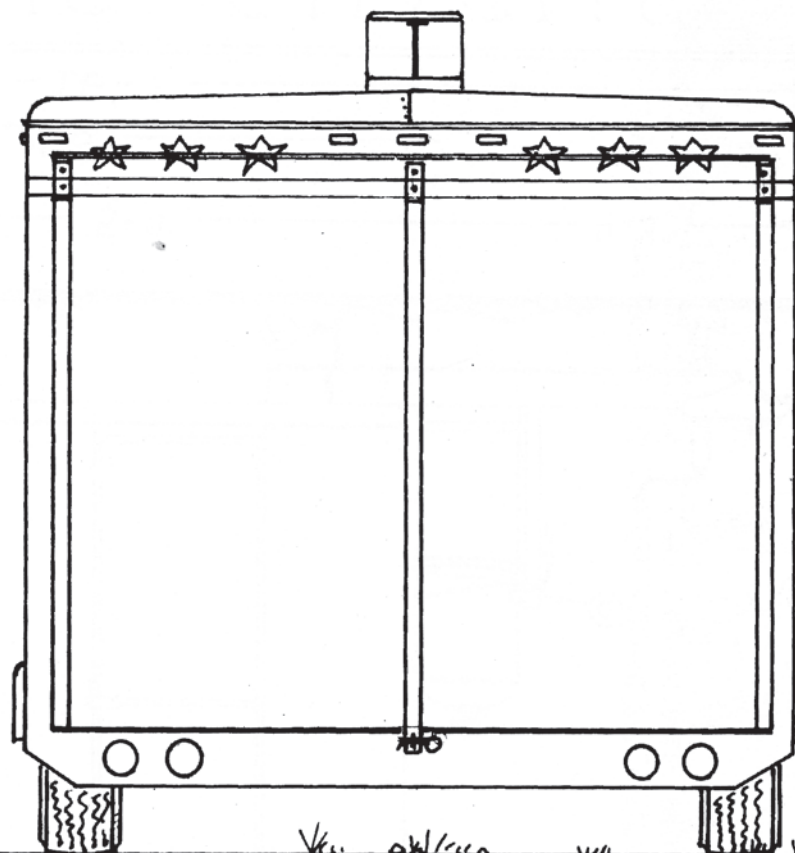


FRONT VIEW



5'8"  
6'10"

REAR VIEW



WIDTH OF BODY - 8'0"

**Martin & Downs Circus  
Cook House Trailer**

Pg 3 of 3

SCALE: 1/2" = 1'

SCANNED & REVISED:  
01/28/2007

DRAWING NUMBER  
**#0369**