

CINDERELLA & SANTA CLAUS

These wagons were built for the Barnum and Bailey Circus in two different years, with the oldest being the Santa Claus Float. This wagon, along with the Old Woman in the Shoe, were built between 1886 and 1888.

The entire set of eight was completed with the addition of Mother Goose, Bluebeard, Sinbad the Sailor, Red Riding Hood, and Cinderella.

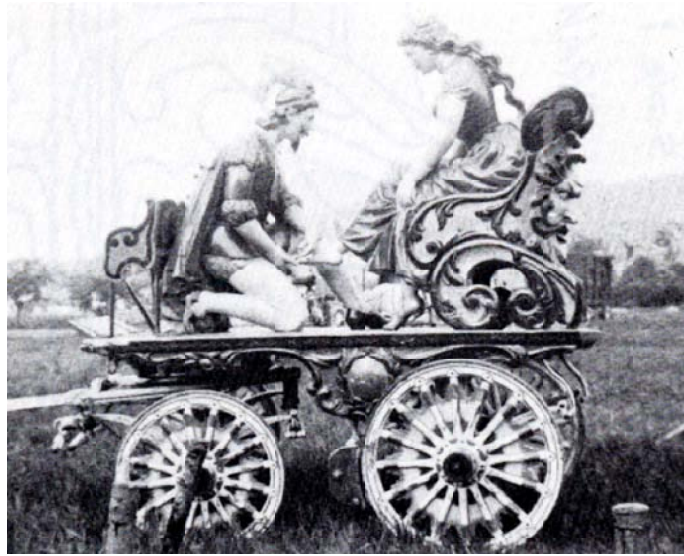
Several other pony floats were listed on a Barnum and Bailey litho, including Sleeping Beauty and Robinson Crusoe. However, none of the considerable news coverage about this set, that would be contemporary with the litho, including a special route book for the 1889 winter season in London, ever mentions other than the eight. The eighth float was the Howes Great London, Dragon Pony Float.

This conspicuous absence of coverage and photographs, leads to the conclusion that the Beauty and Crusoe were never built.

The eight stayed with the show until the second European tour of 1898-1902, when three were left behind. This fact can be ascertained from the inventory of equipment compiled by Barnum & Bailey Ltd. (ref: 1957 pamphlet, THE AFFAIRS OF JAMES A. BAILEY). This inventory listed five pony floats as a group and it was necessary to examine parade photos to determine that they were Cinderella, Mother Goose, Bluebeard, Red Riding Hood and the Howes wagon.

Soon after the show returned from the five year European tour, a large set of correlative pictures were taken at Bridgeport, about 1903. After several years, all traces of the Simbad, Bluebeard and Red Riding Hood are lost and they disappeared from history.

The remaining four turn up on several shows, including the re-issued Ringling owned Forepaugh-Sells Show of 1910-



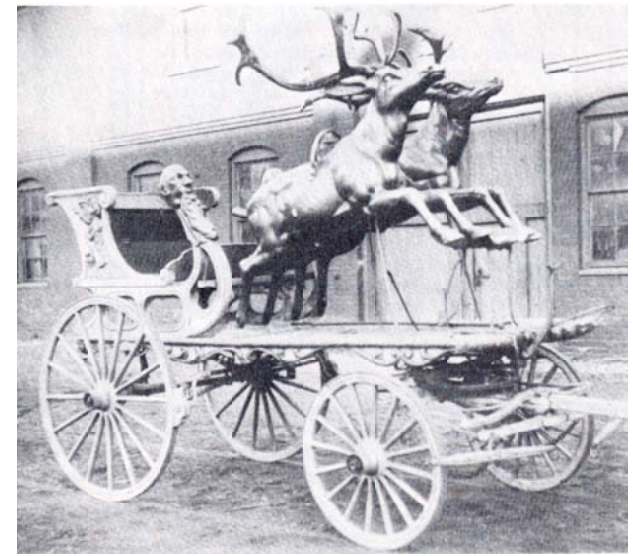
The pony float Cinderella as it appeared on Jess Adkins' Cole Bros. Circus in 1936. [Wm. Korford Collection]

11. And it is possible the others were there as well.

In 1912, photographs of the Ringling parade show the Shoe and Cinderella and it is possible that they and perhaps Mother Goose and Santa Claus were with this show off and on through 1918. In any event, these four had to end up with the show property stored at Bridgeport, rather then left behind in Baraboo, after Ringling-Barnum discontinued the street parade.

They remained there until 1927, when Fred Buchanan purchased them along with several other wagons including the Two Hemispheres Bandwagon, Barnum and Bailey calliope (horn and clown carvings), and the B & B hippo den, for his Robbins Bros. Circus. Winter-quarters for this show was Granger, Iowa.

The Robbins show was on 30 cars through mid-season 1930. The depression was making itself felt, and 10 cars were cut off and returned to Granger. It is probably that the four floats went back with the cars. The show was mortgaged to W.P. Hall of



Santa Claus in 1903 at the Barnum & Bailey Bridgeport winter-quarters. [Princeton University Library, R. E. Conover Collection]

Lancaster Mo. and the show limped back into the Lancaster winter-quarters.

In 1931, it limped the season on 15 cars and returned to Lancaster. As far as can be determined, the four floats were left in Granger until a Christmas parade was formed sometime between 1930 and 1932, with the tour terminating in Lancaster. However, the Santa Claus was not with this promotion and was left in Granger, where it rotted away.

The Cinderella, Shoe and Goose, remained at the Hall Farm until the Fall of 1935 when Jess Adkins, one of the owners of Cole Bros. Circus, bought them, along with several carloads of Robbins property.

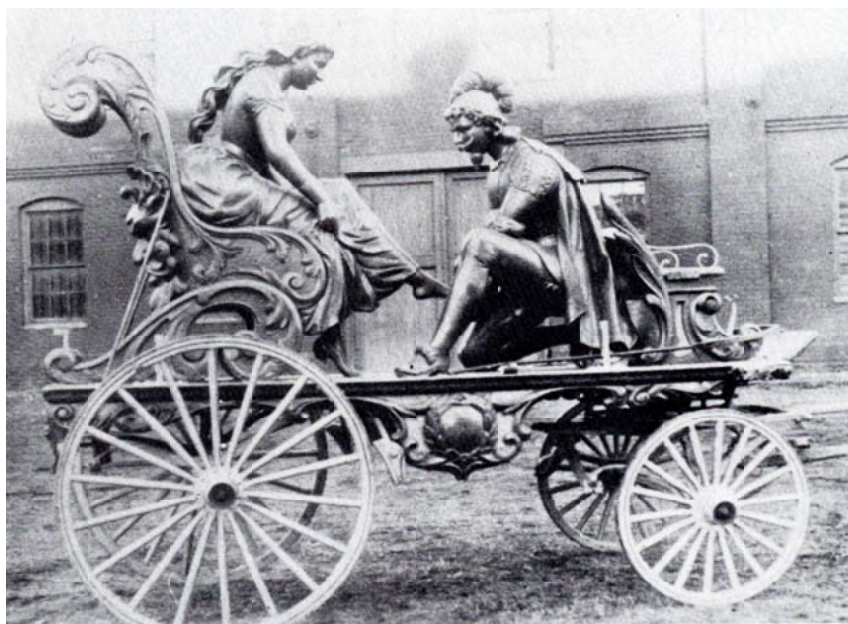
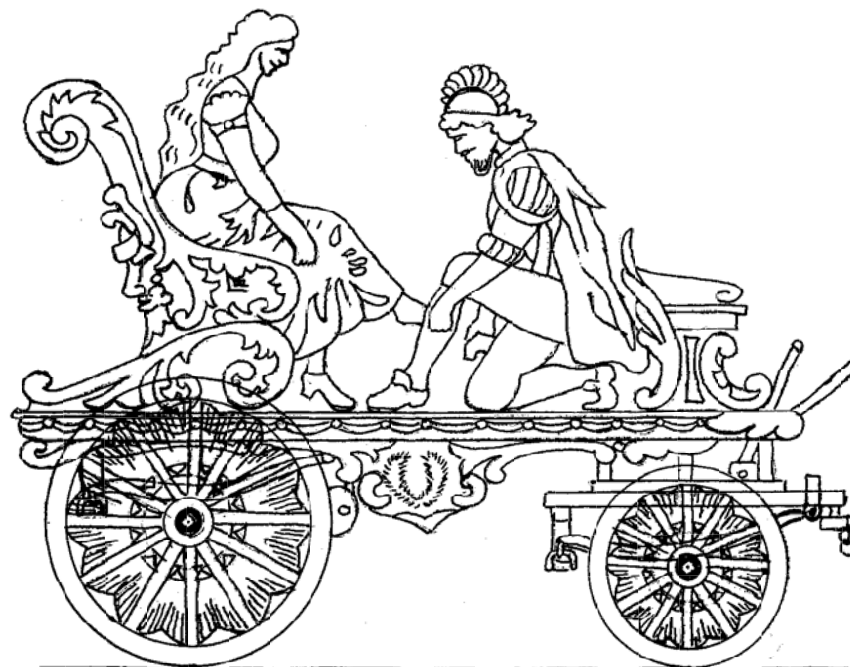
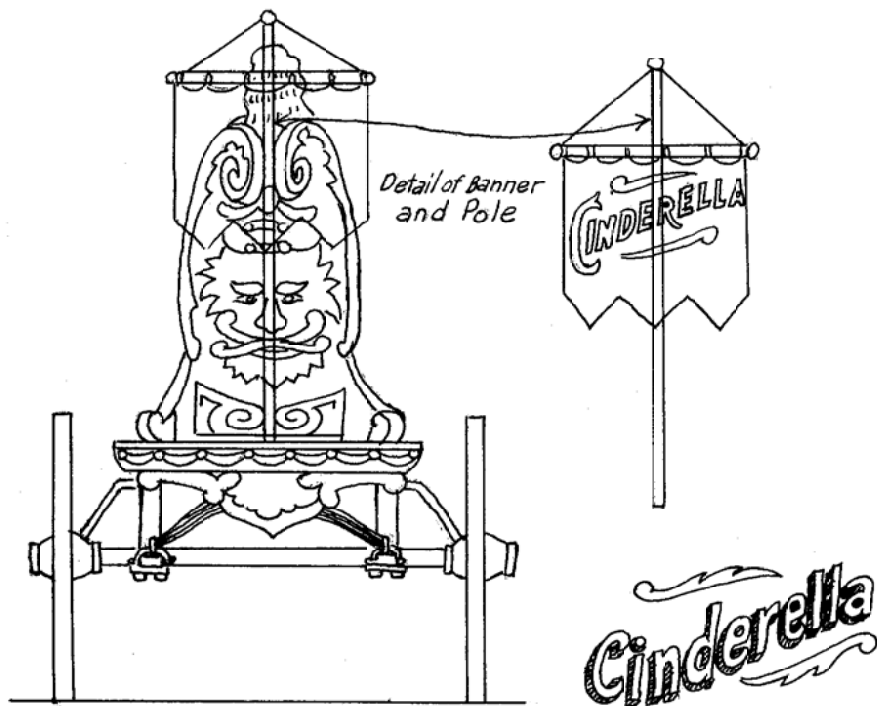
They were on the Cole Show in 1936,

and for most of the subsequent years, through 1950.

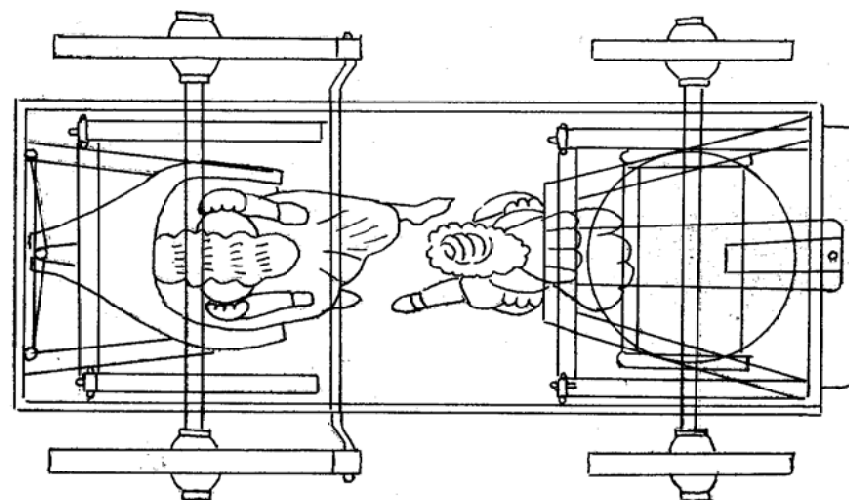
Cinderella was sold to Terrell Jacobs and he retained possession through several financial crisis, but it disappeared in recent years and remained "lost" until 1971, when Chappie Fox found it on a farm near St. Louis Mo. The wagon was taken to Baraboo for the first time since 1918. The wagon has been restored and is on display there today.

(This information was compiled from R. E. Conover's article "Allegorical Pony-Drawn Parade Floats").

Barnum & Bailey Circus			
Allegorical Pony -Drawn Parade Floats			
DATE: 1890	SCALE: 1/2" = 1'	SCANNED & REVISED: 03/07/2006	Pg 1 of 3
Circus Model Builders			
Drawn By C. J. Lockier			DRAWING NUMBER #0250



Cinderella in 1903 at the Barnum & Bailey Bridgeport winter-quarters.
[Princeton University Library, R. E. Conover Collection]



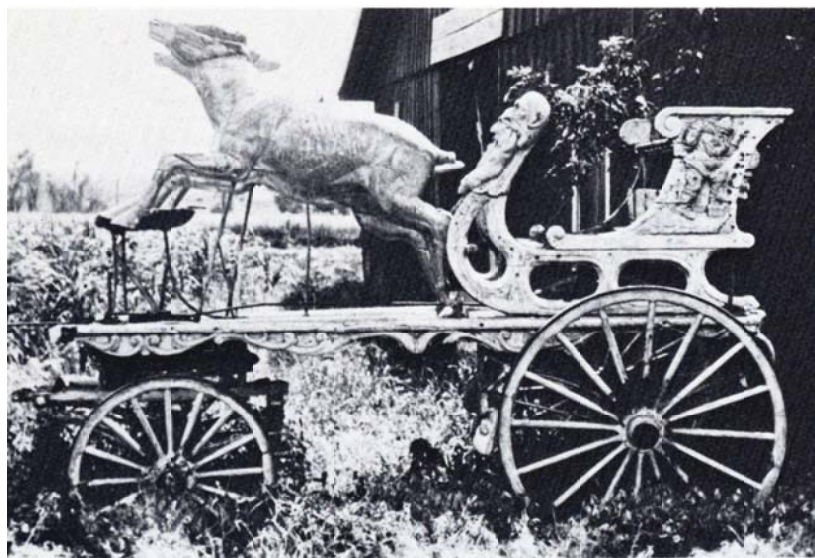
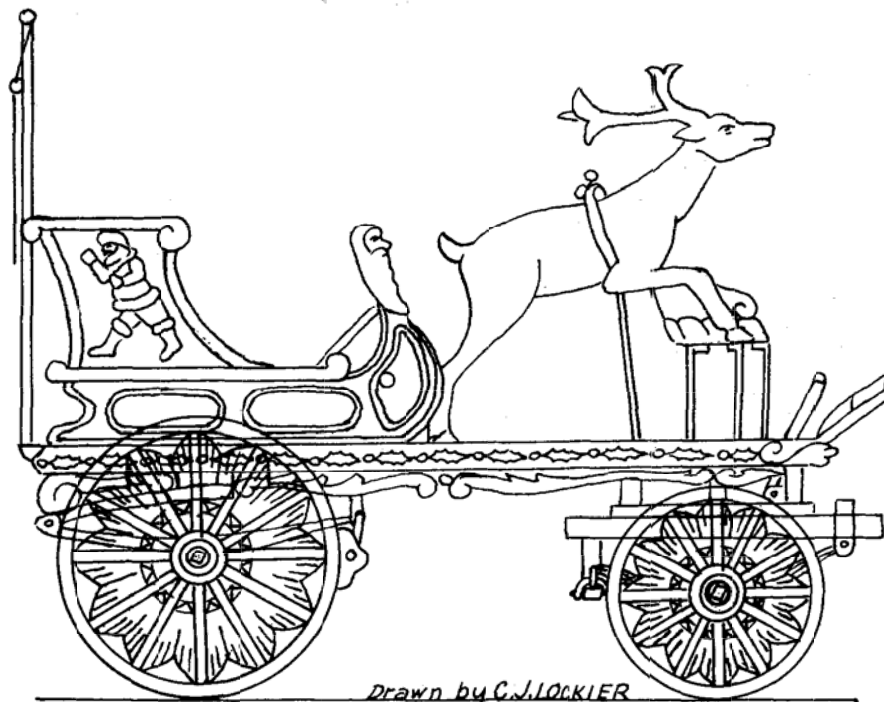
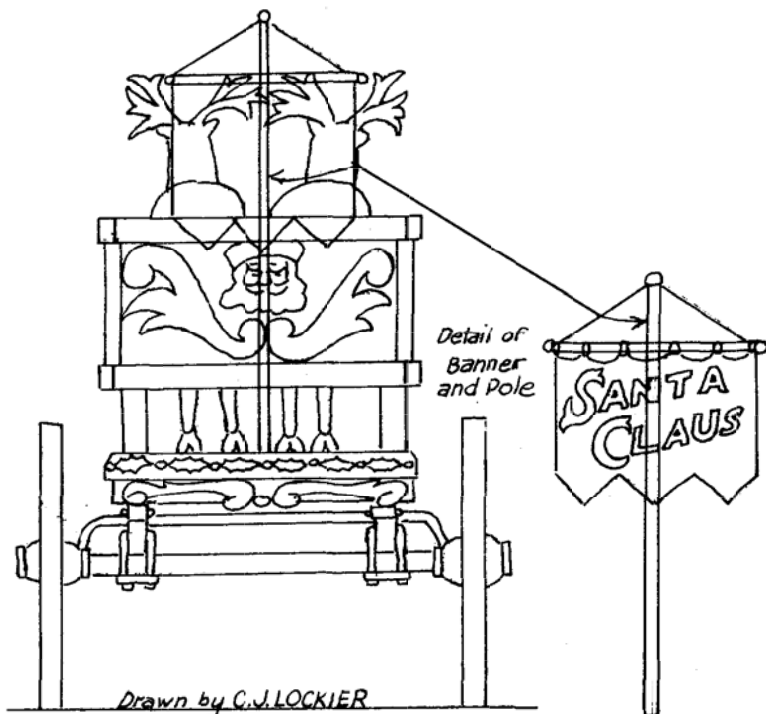
Barnum & Bailey Circus Allegorical Pony -Drawn Parade Floats

Pg 2 of 3

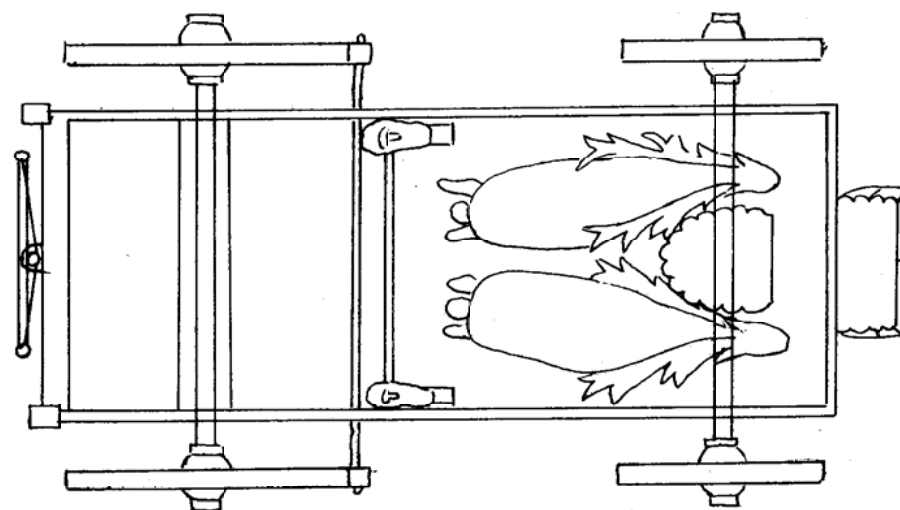
SCALE: 1/2" = 1'

SCANNED & REVISED:
03/07/2006

DRAWING NUMBER
#0250



Santa Claus rotting away at Granger, IA, Buchanan Robbins Bros. Circus, date unknown [R. E. Conover Collection]



**Barnum & Bailey Circus
Allegorical Pony -Drawn Parade Floats**

Pg 3 of 3

SCALE: 1/2" = 1'

SCANNED & REVISED:
03/07/2006

DRAWING NUMBER
#0250