

Photo 1 - RBBB truck lineup of 1923. Note AC No. 138 with its half-open/half-closed van type body. [CWM Collection]



Photo 2 - RBBB No. 138 in a later photo now sports a tank body. Note the reinforcing on the tank and the boarded storage area above the tank. Also note the Power-Take-Off (PTO) driven pump mounted on the running board with a discharge pipe routed under the door and over the fender with a hose folded back over the fender. [Wm. Koford Collection]

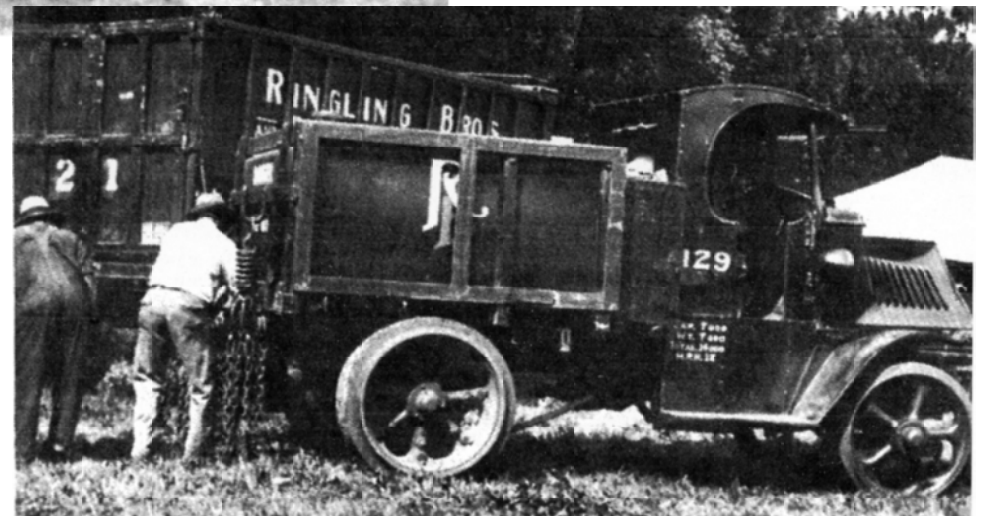


Photo 3 - RBBB AC 4 No. 129 was formerly with the Sparks show, but by 1932 it was a water truck the Big Show. Note the steel tank framed out in wood with a supply box between the cab and the tank. [Charles Kitto Photo]

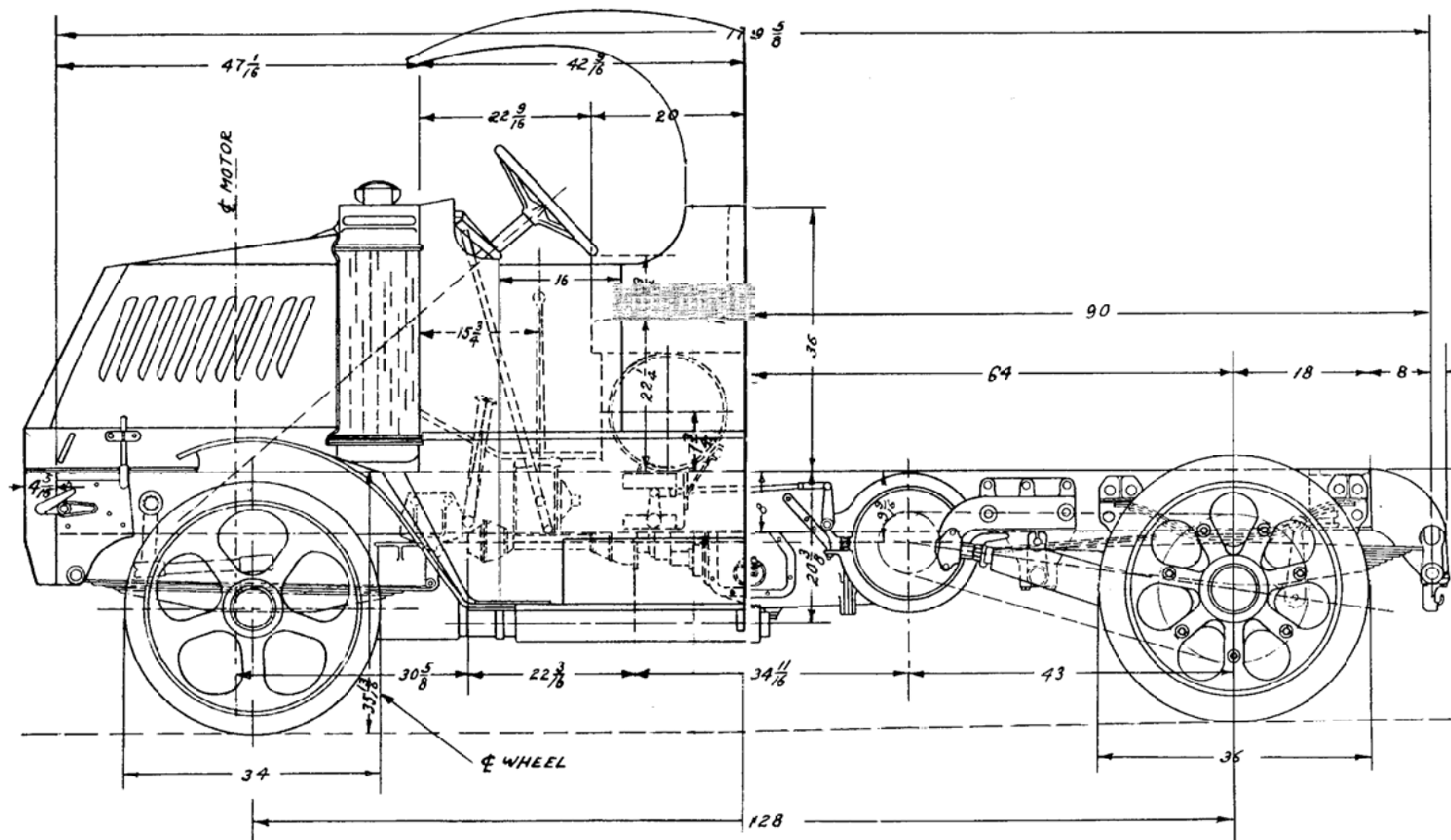
RBBB Bulldog Mack Tractors

DATE: 1930-1950 SCALE: 1/4" = 1' SCANNED & REVISED: 01/23/03 Pg 1 of 6

Circus Model Builders

Drawn By
Several - See Individual Drawings

DRAWING NUMBER
#0285



Between 1916 and 1938, 40,299 AC Model "Bulldog" Mack trucks were produced. From the 1920's until early in the 1950's, nearly every American rail circus had at least one Bulldog on its equipment roster.

Most of the Macks used by the various shows were the 128 inch wheelbase "tractor" type. Original versions saw considerable service in World War I. "Refinements" included the addition of a cab roof, windshield, headlights and stoplights, and pneumatic tires.

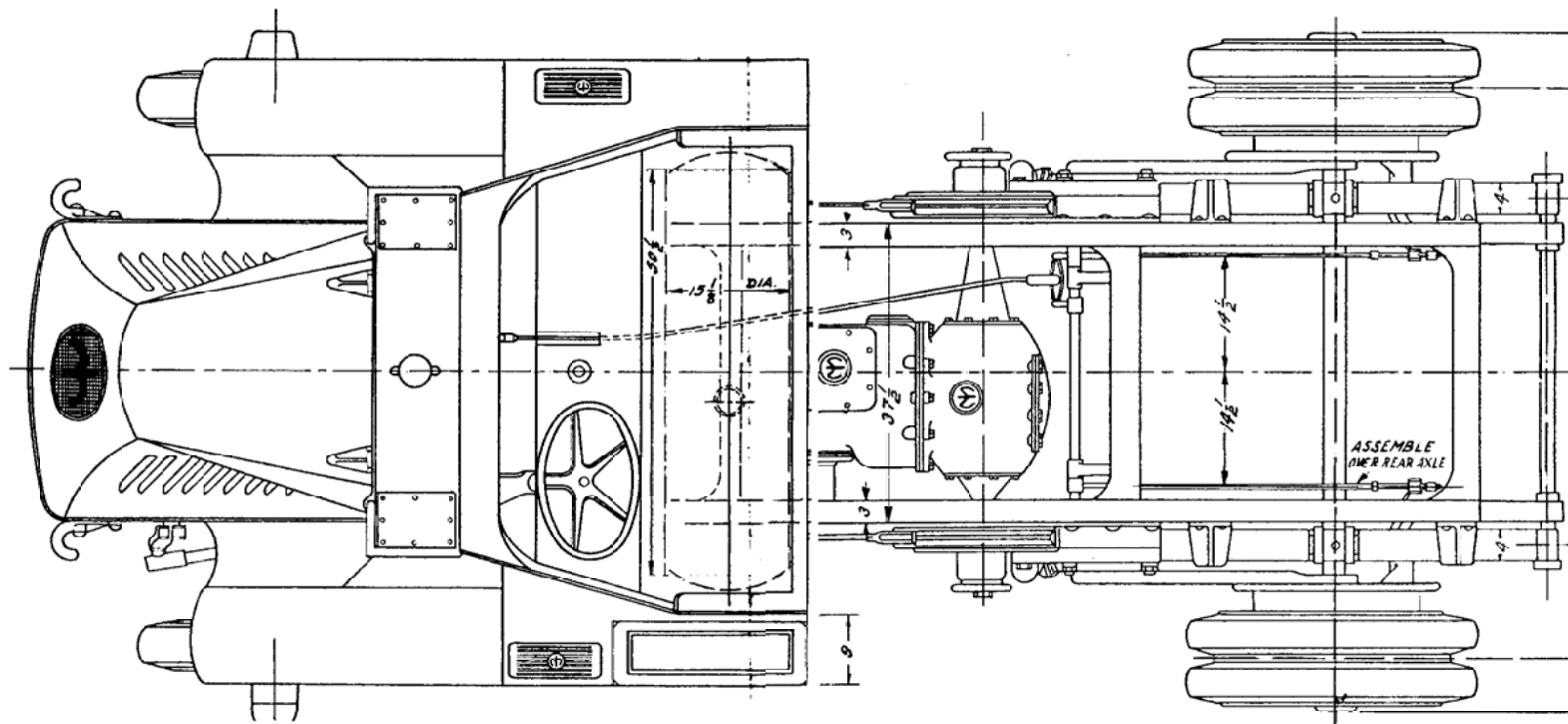
The 1916 model 3 1/2 ton Mack AC Tractor retailed for \$3,400. The four cylinder engine developed 40 horsepower and the truck had a top speed of 18 1/2 miles per hour. The fuel tank, located under the seat, held 40 gallons of gasoline.

A brochure published in 1916 by the International Motor Company, builder of the Mack "Bulldog", advertised that "this vehicle has a 40 H.P. MACK motor of special design, which gives enormous power at low operating cost." Little wonder that this colorful vehicle found a place on the circus, working along with the traditional circus horse, MOVING THE SHOW!

The Ringlings purchased some of the first Macks available sometime around 1916. The July/August 1976 *LCW* shows pictures of No. 135, still being completed at the Mack factory. The August/September 1970 *LCW* shows No. 135 was still in service in 1944 and was later re-numbered as No. 235. Barnum & Bailey's Greatest Show on Earth had at least one Mack fitted with a stake driver on the back.

Battered, tattered, updated with windshields, pneumatic tires and diesel engines, but always looking like a Mack, they endured through time, with some surviving into the 1950's and the last days of the big rail shows. Indeed, several Ringling AC Macks, refusing to die, continued working with the Royal American Shows Carnival until 1960 and were later recovered by the Circus World Museum, where one is restored and still working today. What a great truck and what a fabulous history!

RBBB Bulldog Mack Tractors



Chassis drawing provided by
Charlie Shaffer

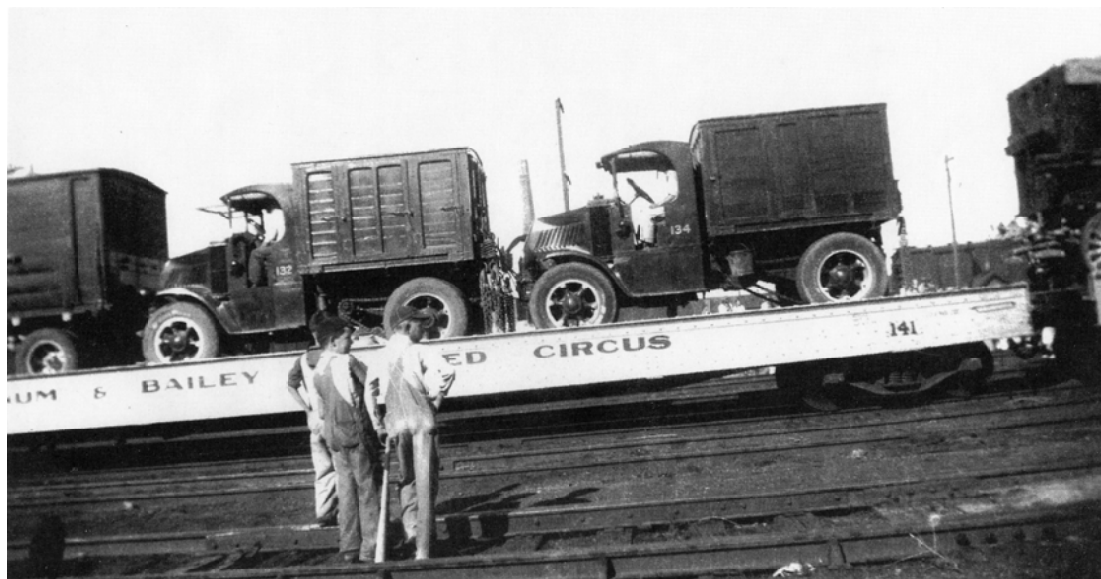


Photo 4 - RBBB Truck Nos. 132 and 134 loaded on flats. Trucks look very clean with new paint. Note only truck number, no RBBB name. [Wm. Koford Collection]

RBBB
Bulldog Mack Tractors



Photo 5 - RBBB No 231 with a large, high , all steel water tank. Note the exhaust stack for the diesel engine and exterior support strap on the running board to support the extra tool box. [Dyre Reynolds Photo]

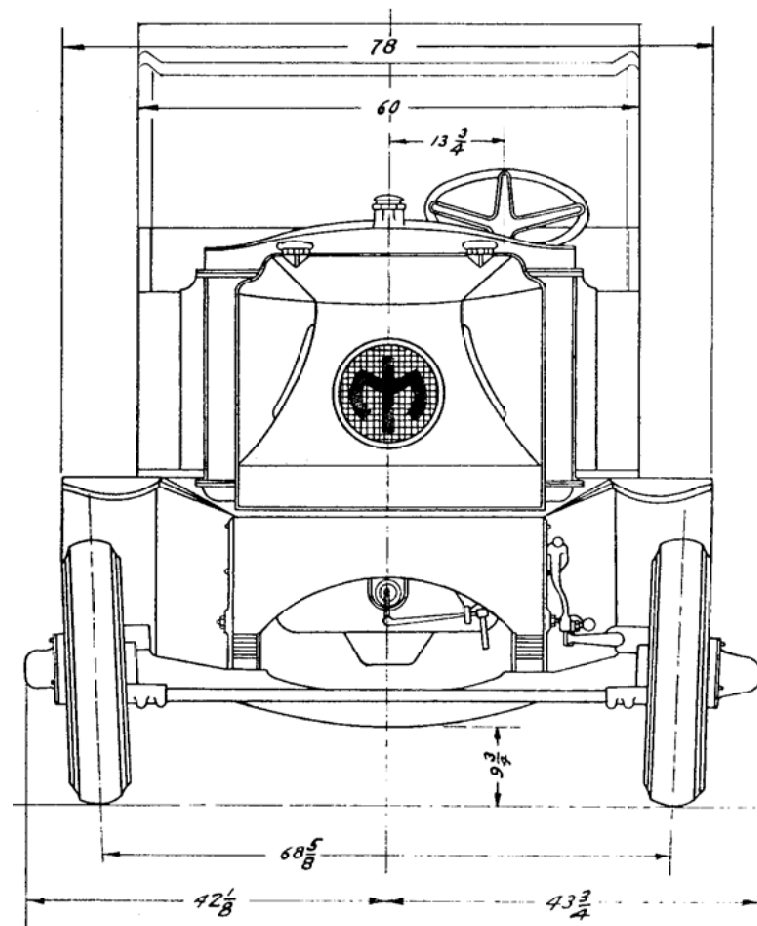


Photo 6 - (right) Last van to be mounted on a RBBB Truck No. 236 is unloading in 1950. It is completely made of steel. Most trucks were re-numbered in later conversion. [Gene Baxter Photo]

RBBB Bulldog Mack Tractors

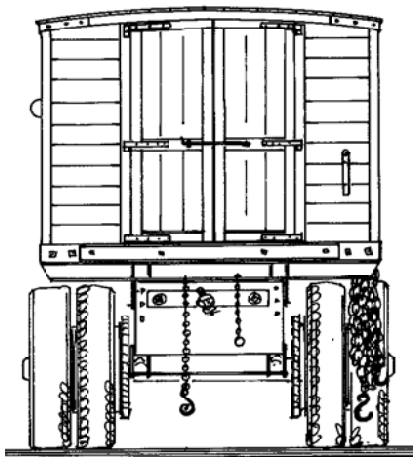
Pg 4 of 6

SCALE: 1/2" = 1'

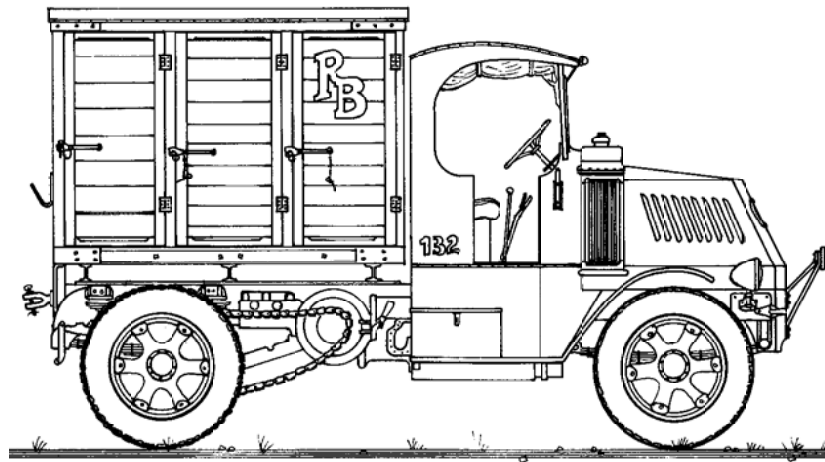
SCANNED & REVISED:
01/23/03

DRAWING NUMBER
#0285

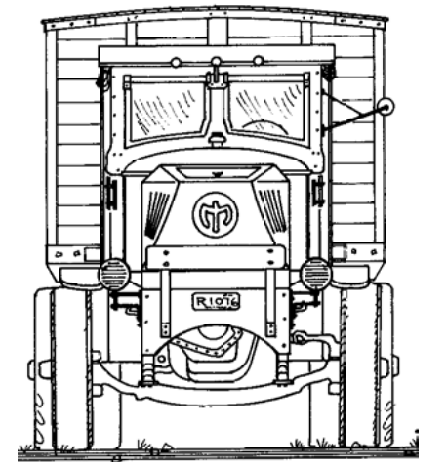
These Drawings by Mike Hartigan



Rear View



Right Side View



Front View



Photo 7 - RBBB Truck No. 132 in Albany, NY. Note three doors and only the RB on the front door. [Gene Baxter Photo]



Photo 8 - RBBB Truck No. 132 on lot. Note three doors on the left side and the rear door open. See contour of top of the rear door [Wm. Koford Photo]

RBBB Bulldog Mack Tractors

Pg 5 of 6

SCALE: 1/2" = 1'

SCANNED & REVISED:
01/23/03

DRAWING NUMBER
#0285

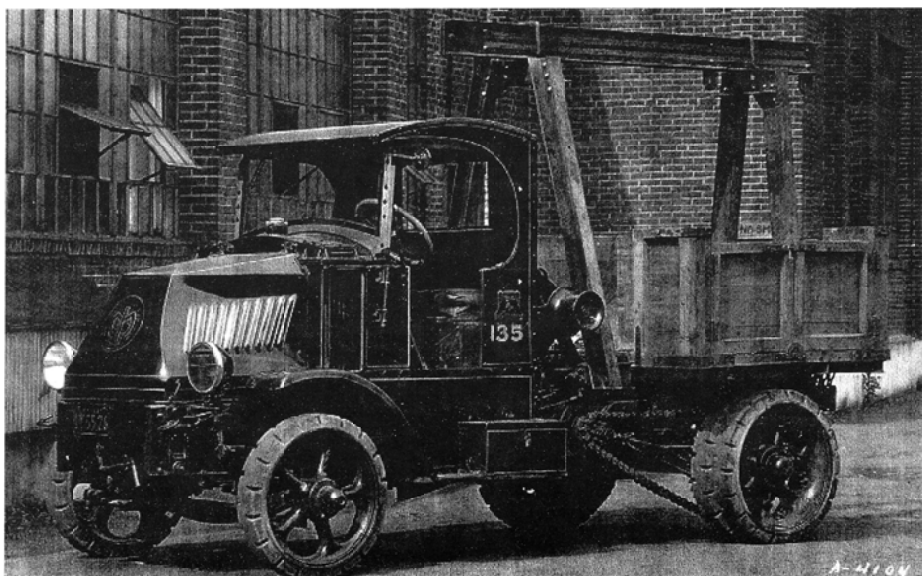


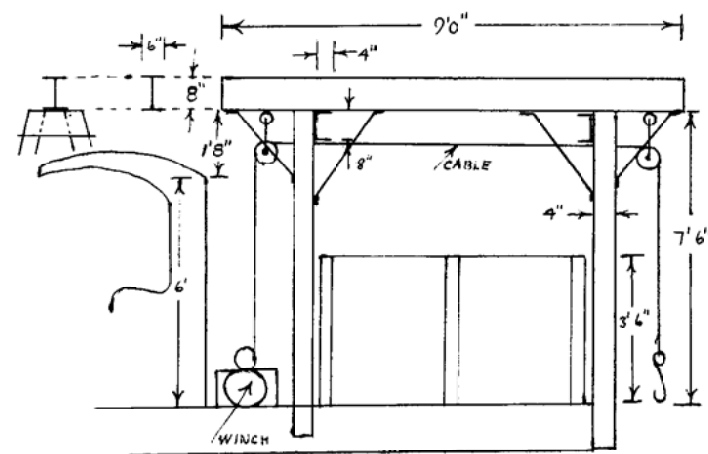
Photo 9 - Front and left side view of RBBB No. 135 crane truck in 1931 at Mack Trucks {Mack Truck Photo}



Photo 11- RBBB No. 235 was the last "Bulldog" to see regular service on an American circus. [No Credit Available]



Photo 10 - RBBB No. 135 pulling a wagon over flats in 1936. Note the Gilly wagon riding on top of storage area and hard rubber tires replaced by pneumatic ones. [Conover Collection]



George Carve Sketch of No. 135 Crane
(Not to Scale)

RBBB Bulldog Mack Tractors			
Pg 6 of 6	SCALE: 1/2" = 1'	SCANNED & REVISED: 01/23/03	DRAWING NUMBER #0285