



The backyard grease joint, No. 103, of the Ringling Bros. and Barnum & Bailey Combined Shows rolls down the runs on a crisp fall morning in 1954 behind one of the Case train mules. This wagon was one of the last wagons loaded on the first section the night before. It was the last wagon loaded on Mt. Vernon Flat No. 105. (DeWitt Collection)

One of the most popular wagons with show folks, from roustabout to star performer was the backyard grease joint. This wagon, with its aroma of fresh brewed coffee, peanuts and hotdogs, was their only place where a hungry or thirsty soul could get a bite to eat and drink when the cook house was not open.

Carried on the first section of the Ringling train, it was usually in operation before the cook house was in the air, serving boiling black coffee to the canvas and layout crews. When the flag went up all hands went to breakfast, lunch or dinner, depending on the time of day.

Once the tops were in the air and the rigging and seat crew were working, the grease joint became the social club for the canvas crews. Here they cut up jackpots over a hot cup of coffee or ice cold coke. Later, between performances, it served the same function for performers and other crews,

I do not know when this particular wagon, No. 103, joined the Ringling show, but it is obviously Yeske built and shows up in photos from the early 1940's through 1956.

Where it is today, is anybody's guess.

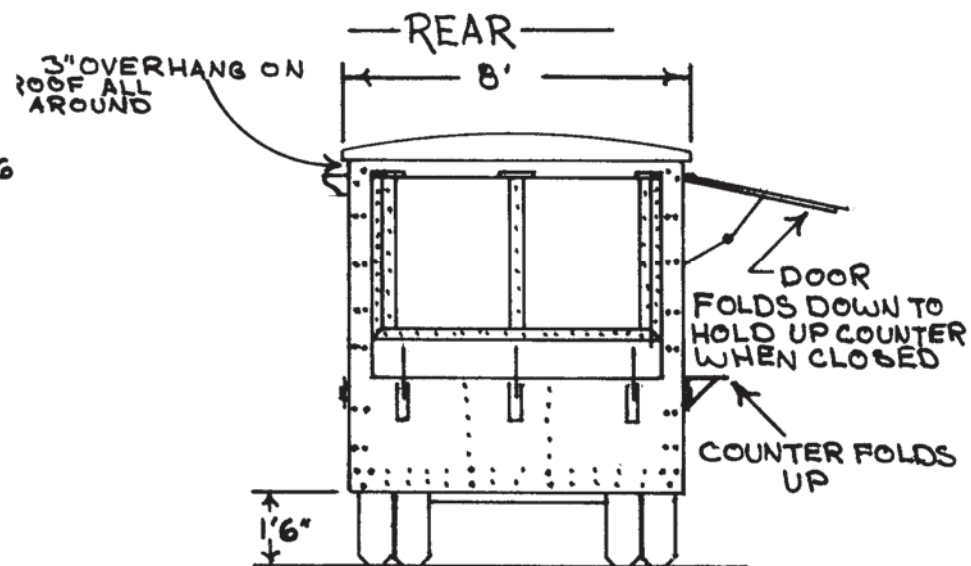
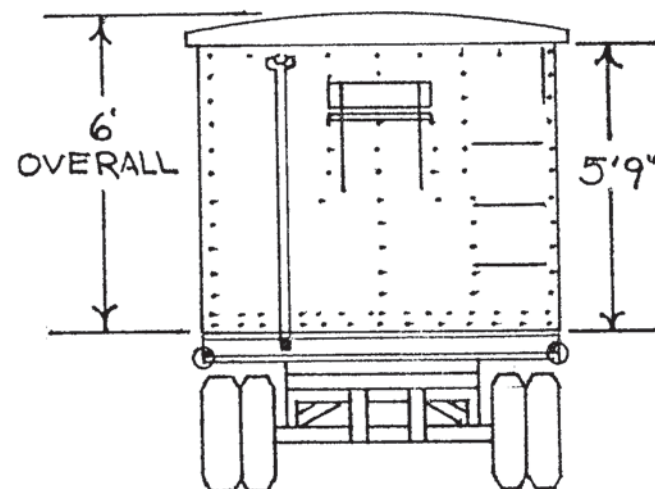
Ringling Bros. Barnum & Bailey Backyard Grease Joint No. 113

DATE: 1940s	SCALE: 1/4" = 1'	SCANNED & REVISED: 12/02/01	Pg 1 of 3
-------------	------------------	--------------------------------	-----------

Circus Model Builders

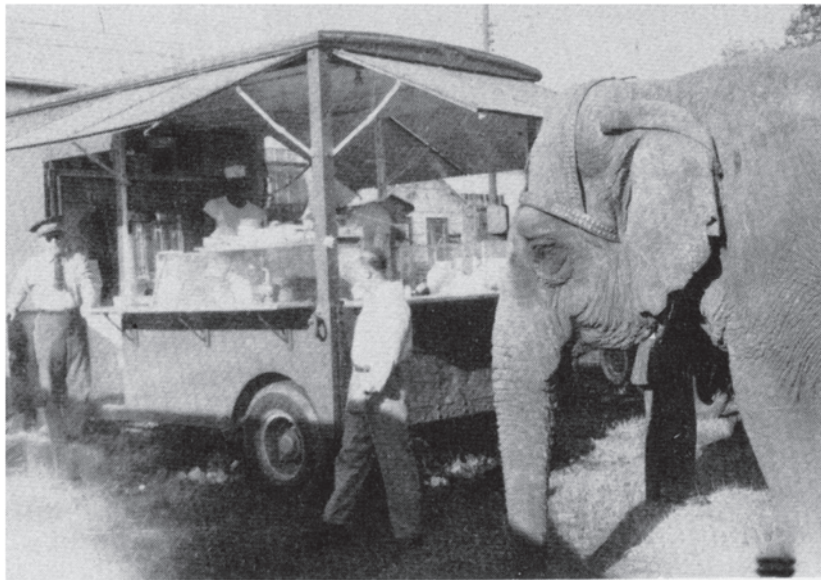
Drawn By
Lucky Allen & Steve Flint

DRAWING NUMBER
#0315

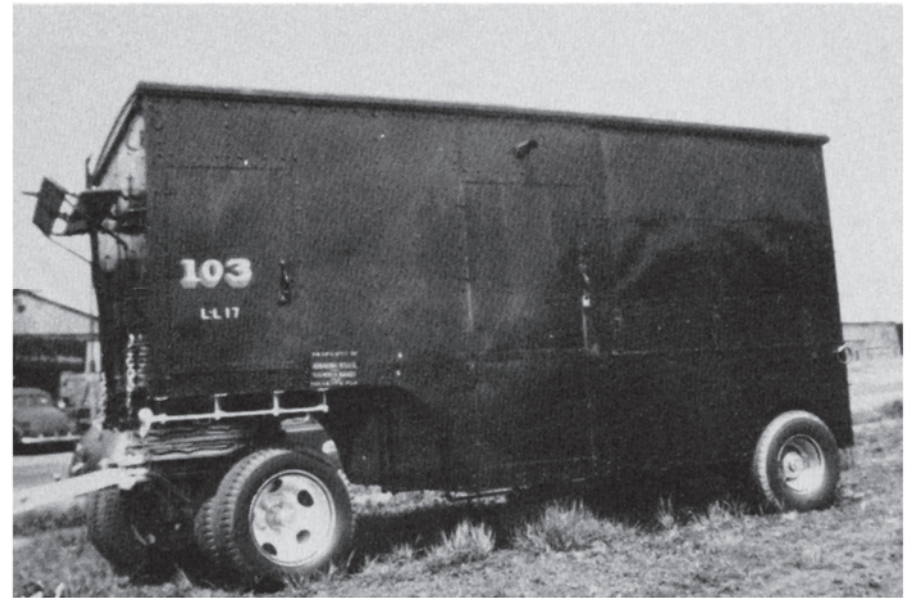


Pipe presumably is drain or water pipe. Appears to enter wagon in the coffee urn area.

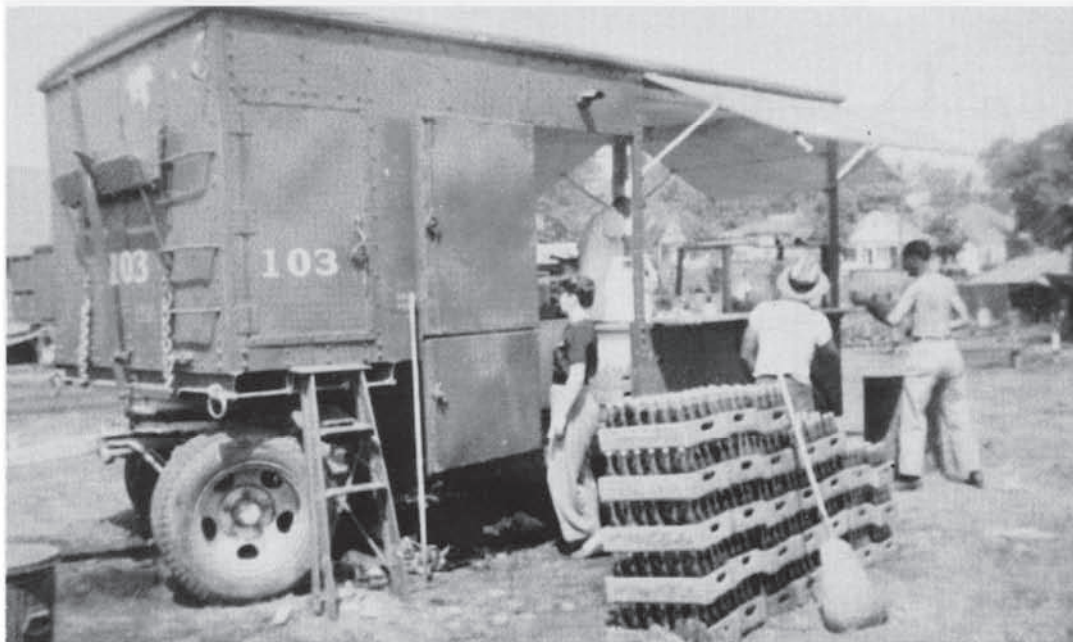
DRAWING NUMBER
#0315



One of the Ringling work elephants patiently waits while the bullhand takes a break at the backyard grease joint. An usher is standing on the door step and the operators are busy inside. Note the placement of the coffee urns and the storage shelves above. (Flint Collection, place and date unknown)



A shiny paint job sparkles on No. 103 on the lot at Washington when photographer William Koford found her on the morning of June 3, 1946. (Koford photo, Flint collection).



It's midday and the Coke cases are piled high awaiting ice down for the thirsty hands. The step ladder is under the storage door where the ice is kept. A show girl talks with one of the operators while the second gets a hot dog ready for a couple of hungry hands. (Photo taken 1947, Circus World Museum Collection, location, photographer unknown).

Ringling Bros. Barnum & Bailey Backyard Grease Joint No. 103

Pg 3 of 3

SCALE: 1/42" = 1'

SCANNED & REVISED:
12/02/01

DRAWING NUMBER
#0315