



Above - Dragon and Mirror Tableau Wagon No. 52, built in 1915 for the F. J. Taylor Circus. This photo was taken from 1966 calendar of Baraboo Wagons and listed this wagon at 18' long - 10 high and weighing 3 tons. Note color shading of wagon body: white ends, yellow sides. [Russ Warner Collection]



I hope the Model Builders will appreciate the efforts of Ed Grimminger to measure this wagon and bring it to our attention. It was only natural that, with so much detail and the warpage of the timbers, dimensions should show up differently on various sketches. Even though Ed tried to cooperate with me and to furnish me with the corrected or additional information that I needed to make the drawings, some dimensions would not add up correctly to the overall length.

If dimension lines are shown, and no dimension given at that point, it means I did not have the information. I have no information other than that shown on the drawings.

There was so much warpage on the lower part of the front undergear at the back, about 1/2 inch in the center, that I suggest we make the aft beam straight and the same length as the front beam running crosswise to the wagon. The beams the springs attach to. No use adding to our troubles.

On the sketches, no length was given for the wagon, so I drew it as being 14 feet long. Later, I found a beautiful picture of this wagon on the 1966 Calendar of the Baraboo Wagons, where the length was given as 18 feet. (See photo to left)

You will have to make the front undergear line up with the back undergear. Ed said the fifth wheel was small in diameter, so I could not see how it could possibly span the timbers he says it mounts on. I suggest you build up the beams or timbers directly beneath it to level up the wagon.

Many thanks to Ed Grimminger for the help he gave me in getting this beautiful wagon on the drawing board.

Robert C. Robinson

Left - Dragon and Mirror Tab at the Circus World Museum in 1996. [Mike Dreiling Photo]

F. J. Taylor Circus Dragon and Mirror Tableau Wagon

DATE: 1915

SCALE: 1/2" = 1'

SCANNED & REVISED:
08/24/2004

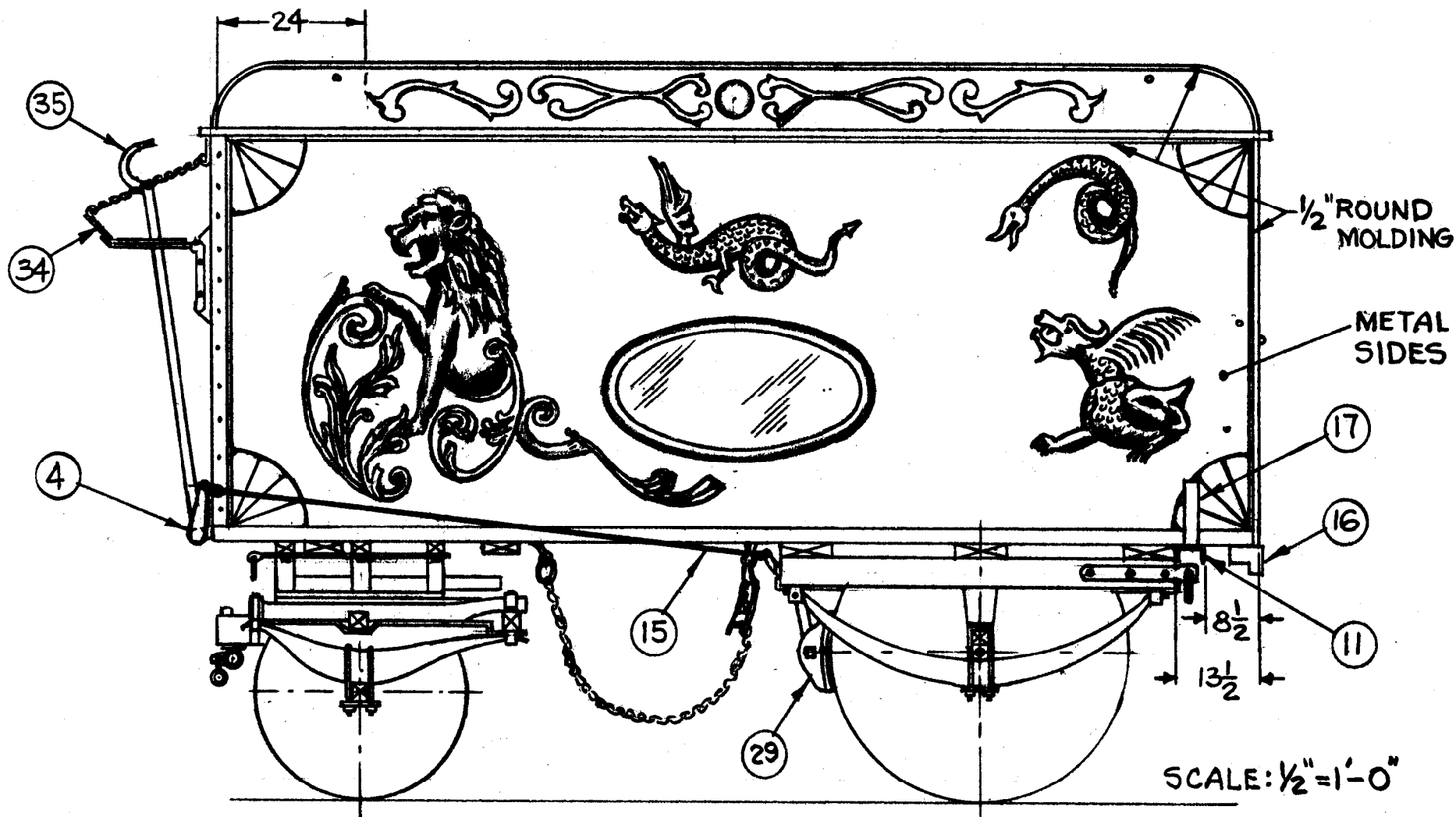
Pg 1 of 15

Circus Model Builders

Drawn By
Robert Robinson/Ed Grimminger

DRAWING NUMBER

#0222



AT ONE TIME WAGON HAD
WHITE ENDS WITH ORANGE
SIDES, AND GOLD CARVINGS
AND MOLDING.

WAGON IS 18 FT. LONG
(DRAWN AS 14 FT. LG)

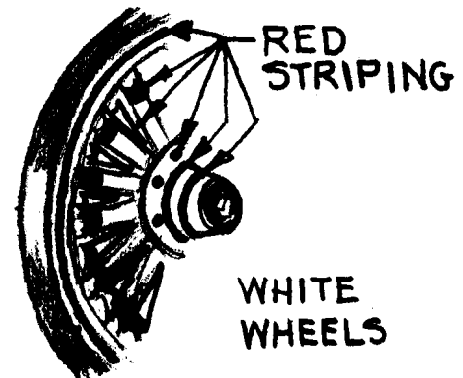
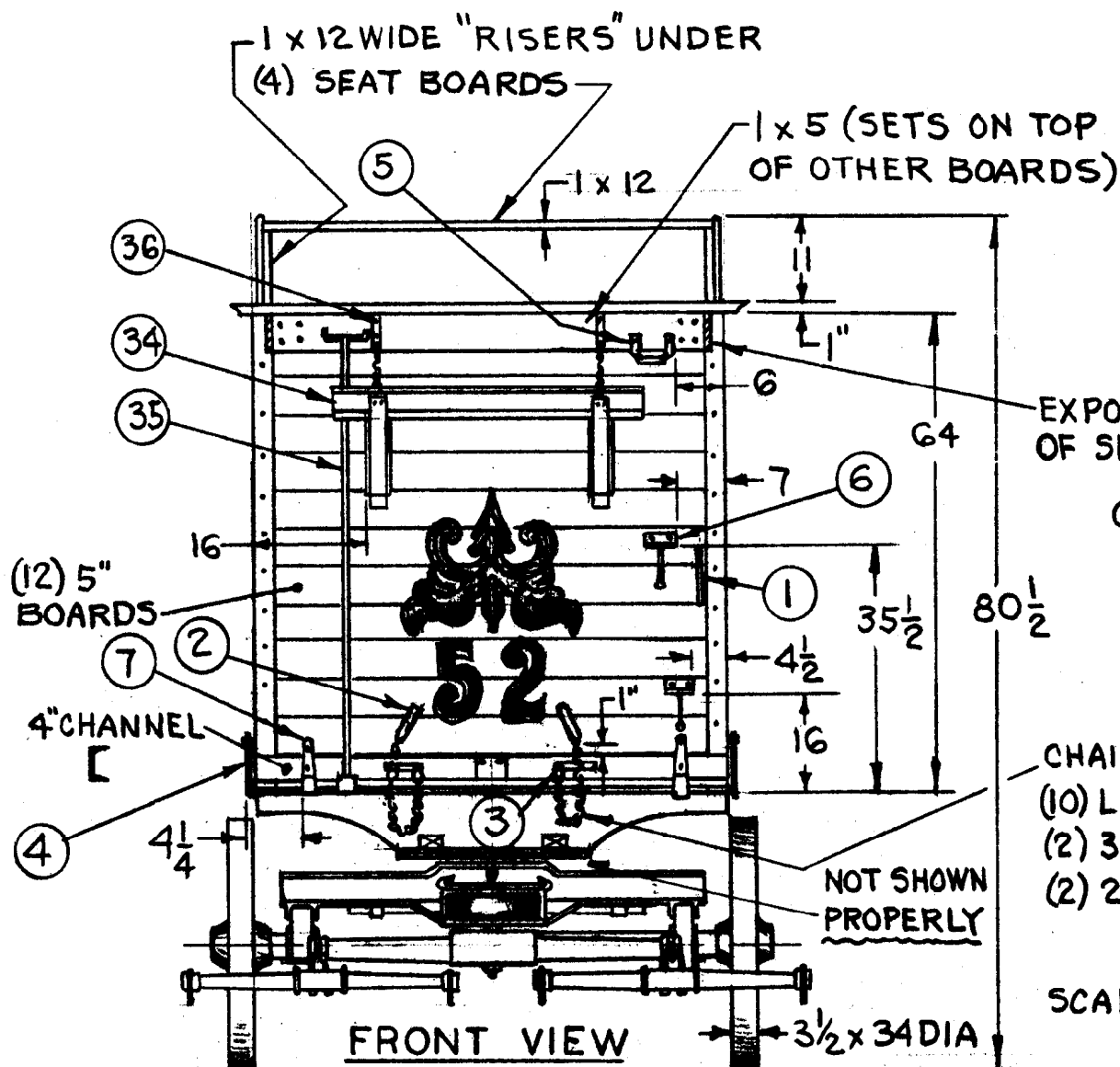
**F. J. Taylor Circus
Dragon and Mirror Tableau Wagon**

Pg 2 of 15

SCALE: 1/2" = 1'

SCANNED & REVISED:
08/24/2004

DRAWING NUMBER
#0222



EXPOSED ENDS
OF SIDE BOARDS

COLORS:-
BRIGHT YELLOW BODY
AND UNDERGEAR.
SILVER CARVING AND
MOLDING

CHAIN: (APPROX. 24" LG)
(10) LINKS, 1 3/4 LG
(2) 3 x 5 OVAL RINGS
(2) 2" SNAP LINKS

SCALE: 1/2" = 1'-0"

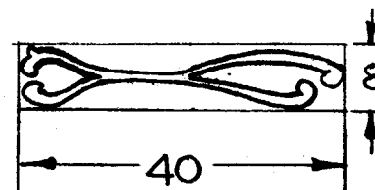
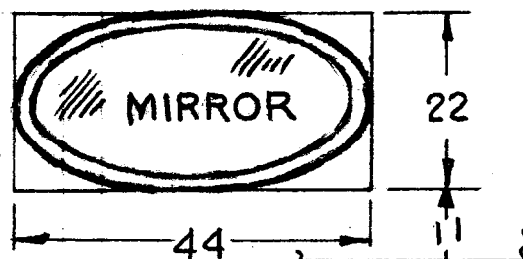
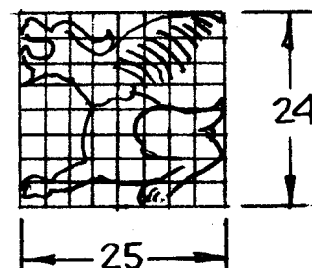
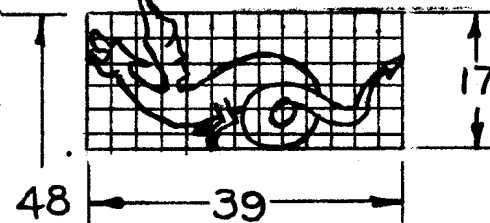
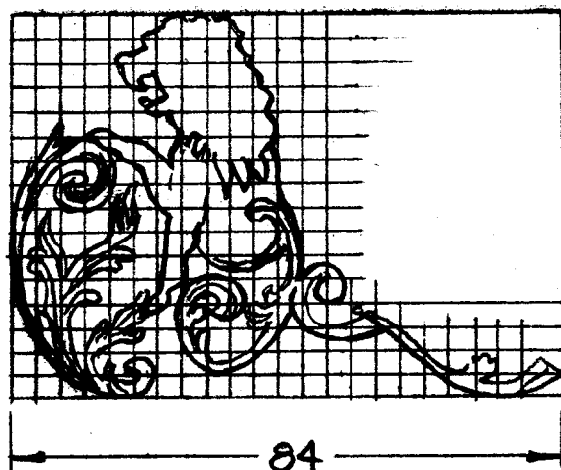
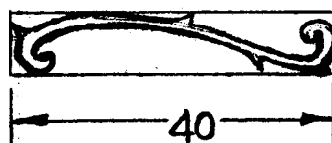
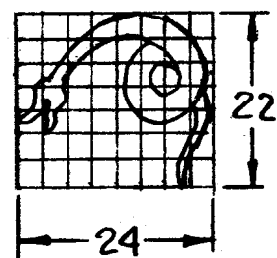
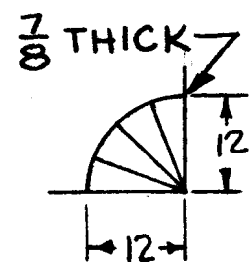
F. J. Taylor Circus
Dragon and Mirror Tableau Wagon

Pg 3 of 15

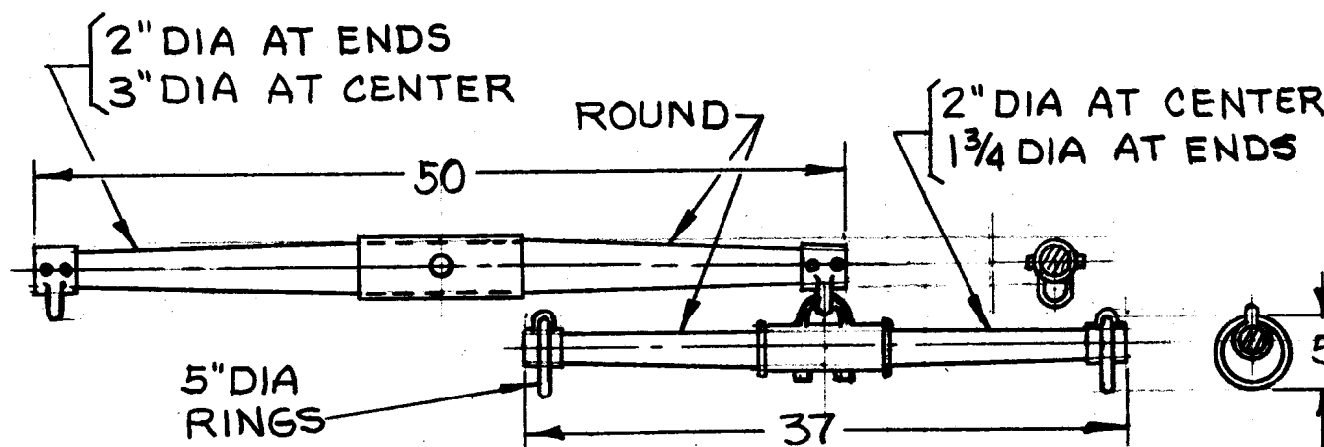
SCALE: 1/2" = 1'

SCANNED & REVISED:
08/24/2004

DRAWING NUMBER
#0222



BOTTOM OF WAGON



DOUBLE TREES

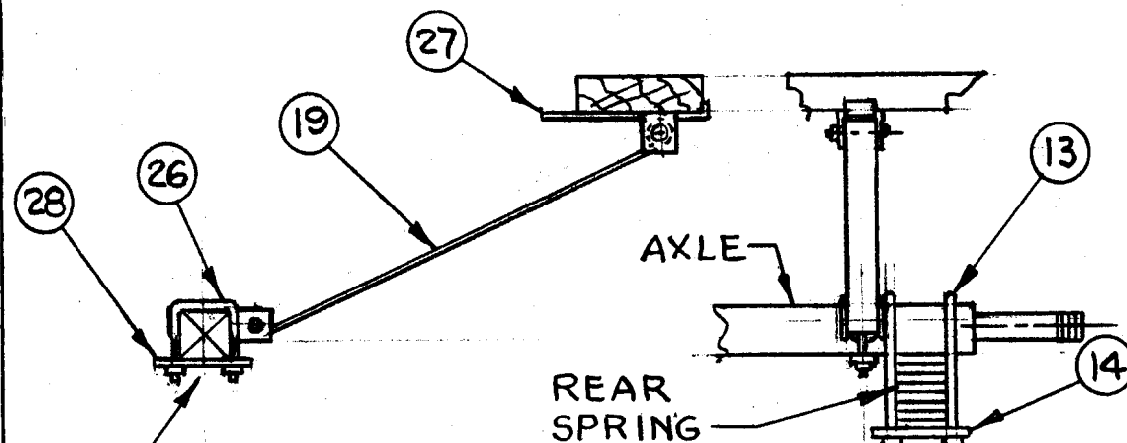
F. J. Taylor Circus
Dragon and Mirror Tableau Wagon

Pg 5 of 15

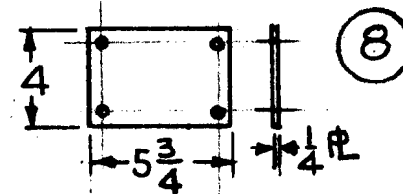
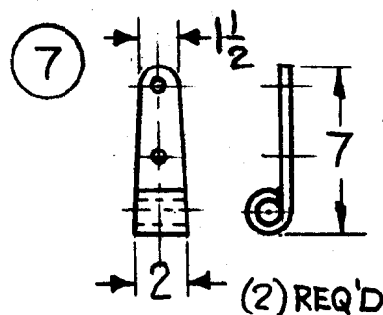
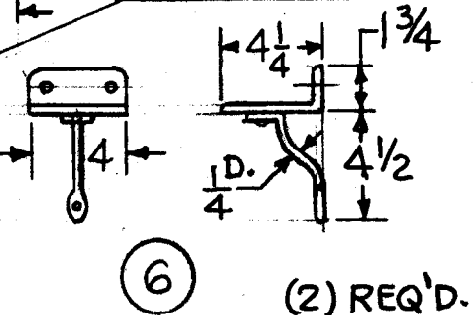
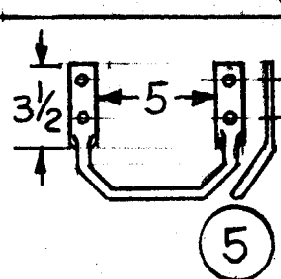
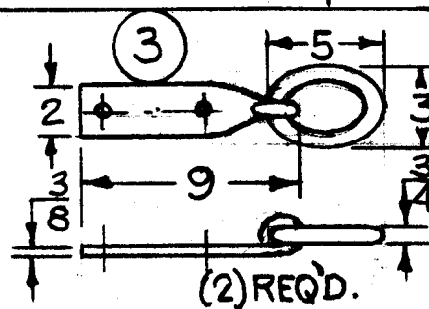
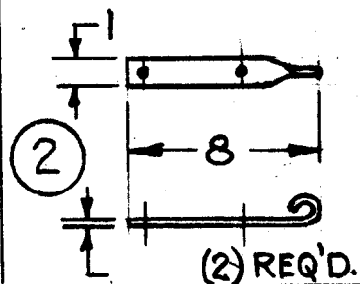
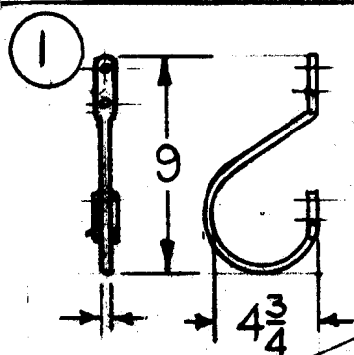
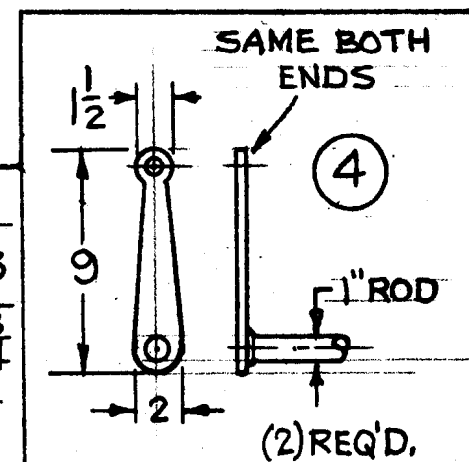
SCALE: 1/2" = 1'

SCANNED & REVISED:
08/24/2004

DRAWING NUMBER
#0222



1 REQ'D. ON EA. SIDE OF WAGON
SCALE: 1" = 1'-0" BRACE DETAIL



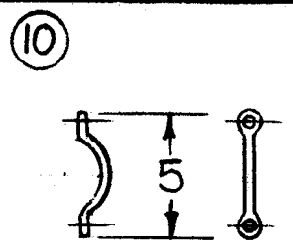
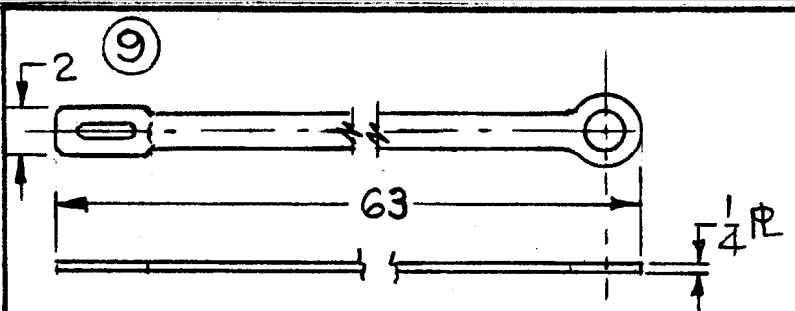
**F. J. Taylor Circus
Dragon and Mirror Tableau Wagon**

Pg 6 of 15

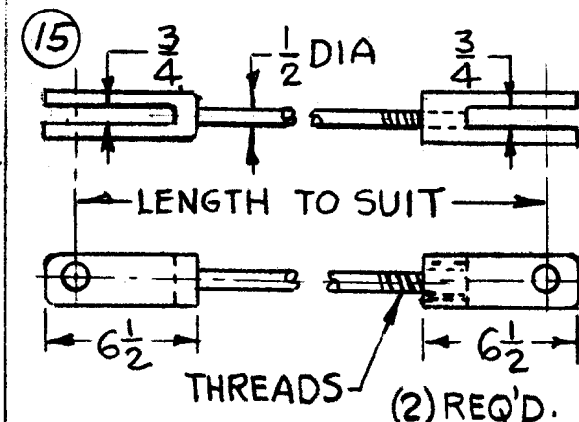
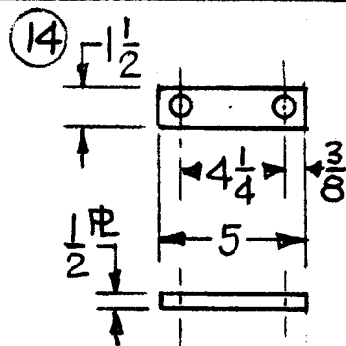
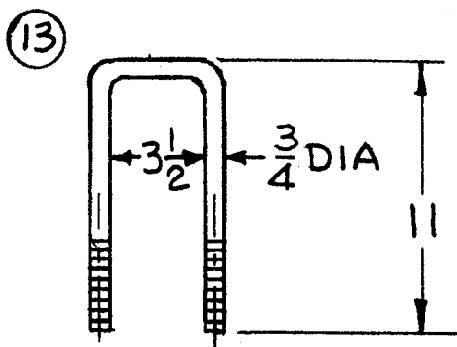
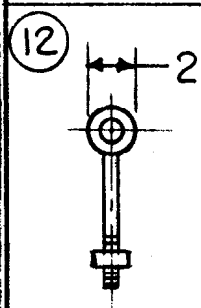
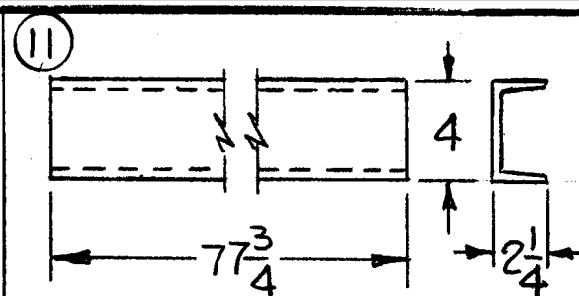
SCALE: 1/2" = 1'

SCANNED & REVISED:
08/24/2004

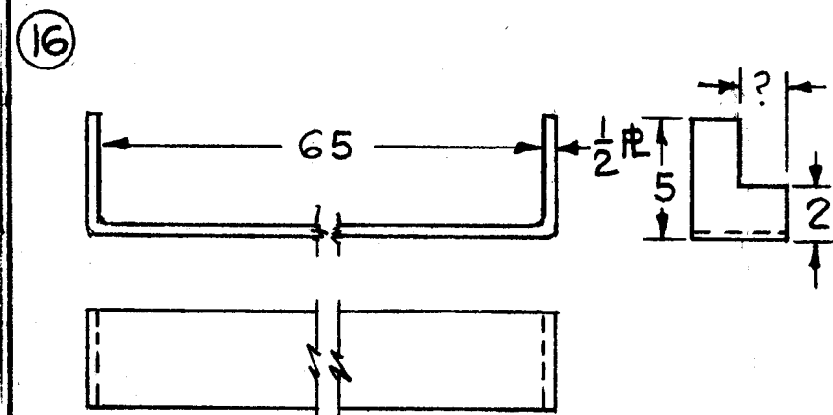
DRAWING NUMBER
#0222



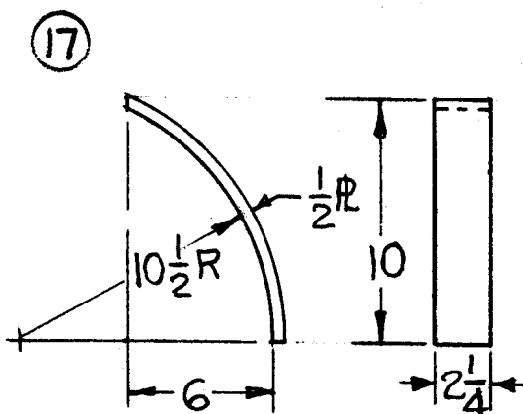
(2) REQ'D.



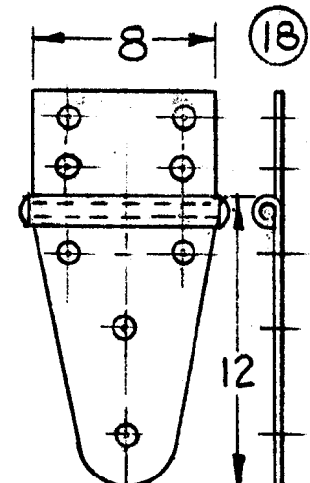
(2) REQ'D.



SCALES: 1 1/2" = 1'-0"



(2) REQ'D.



(4) REQ'D.

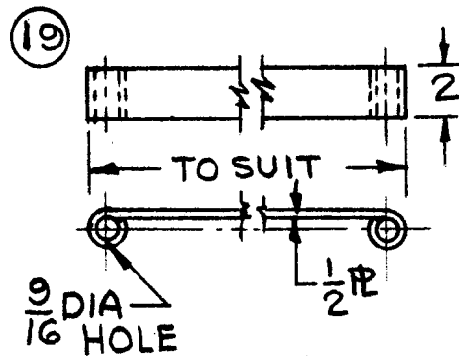
**F. J. Taylor Circus
Dragon and Mirror Tableau Wagon**

Pg 7 of 15

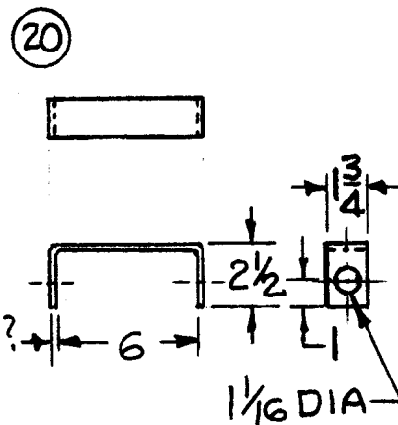
SCALE: 1/2" = 1'

SCANNED & REVISED:
08/24/2004

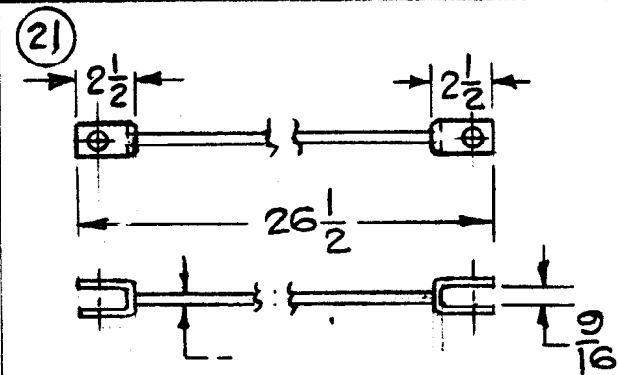
DRAWING NUMBER
#0222



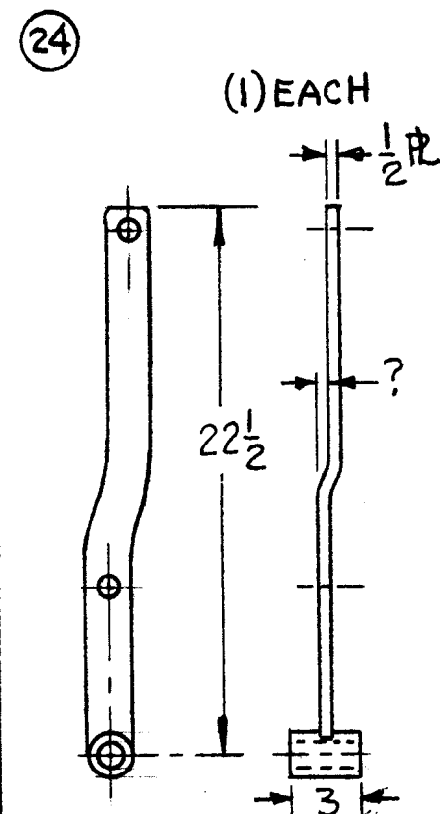
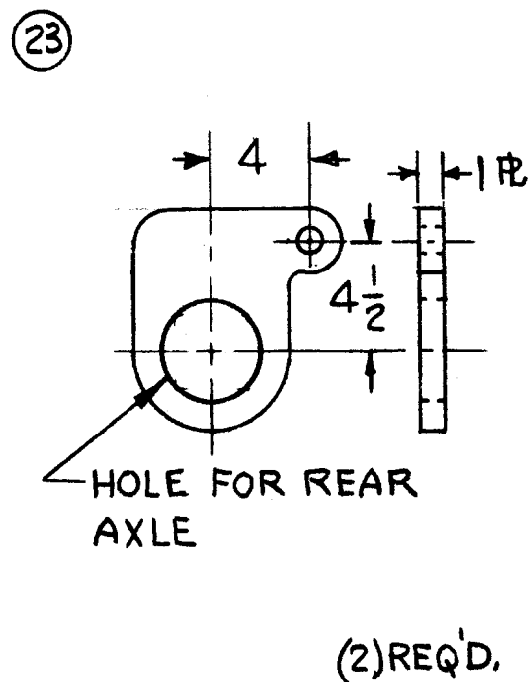
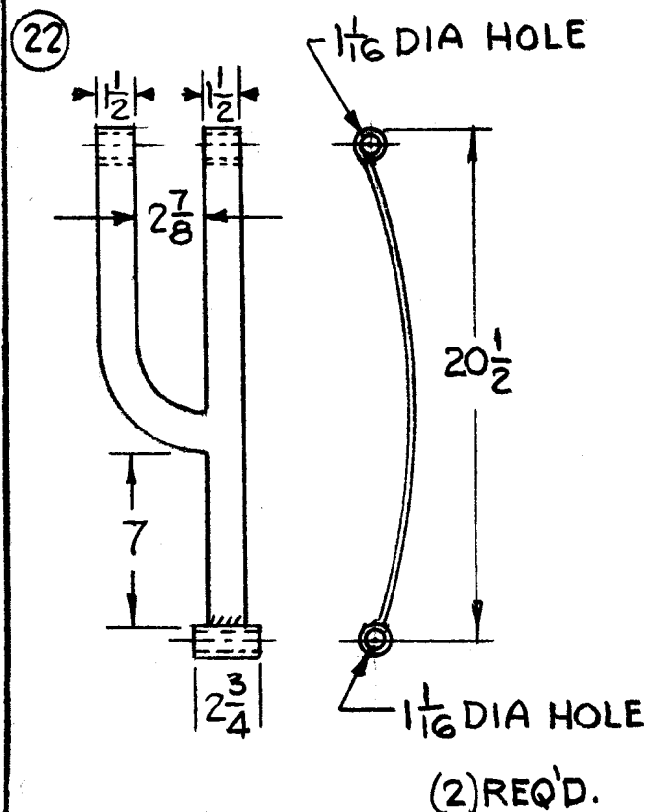
(2) REQ'D



(2) REQ'D.



(2) REQ'D.



**F. J. Taylor Circus
Dragon and Mirror Tableau Wagon**

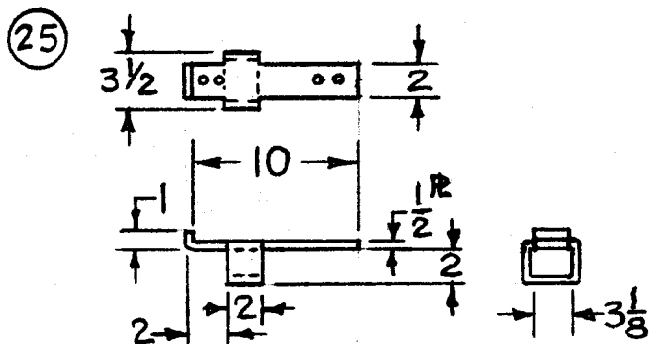
Pg 8 of 15

SCALE: 1/2" = 1'

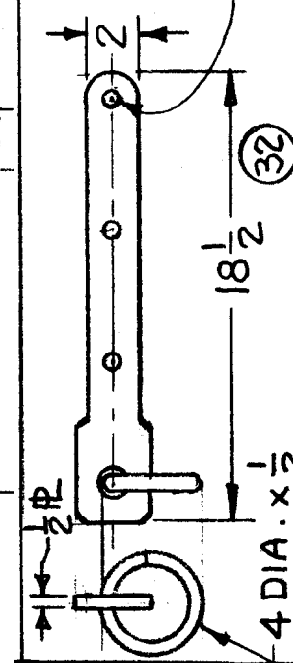
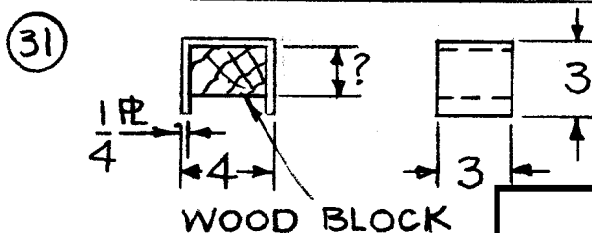
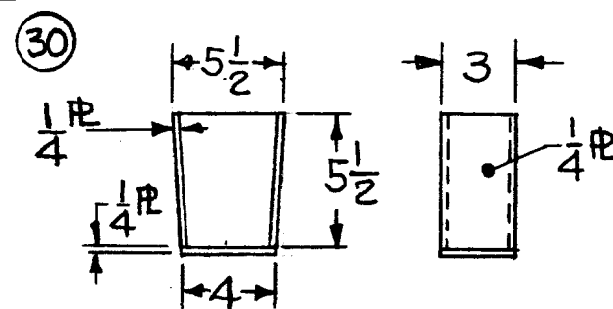
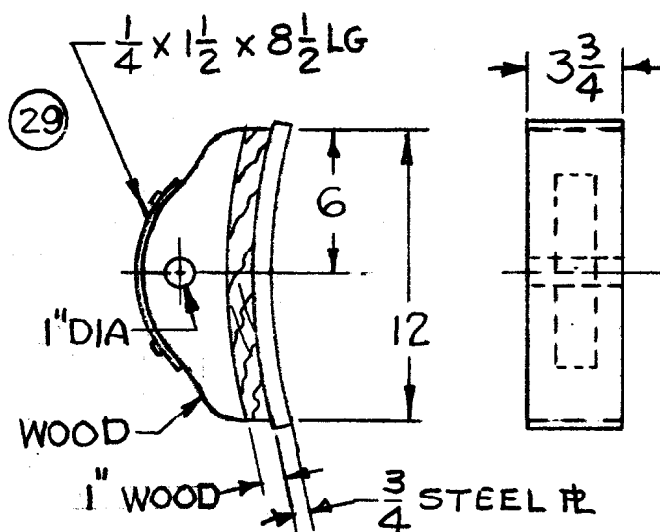
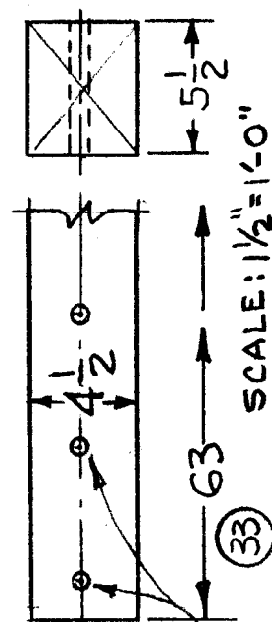
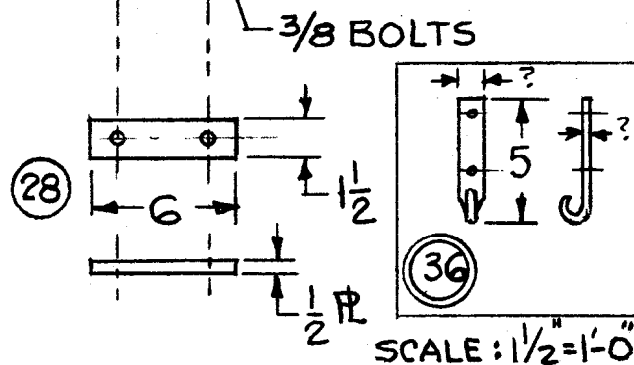
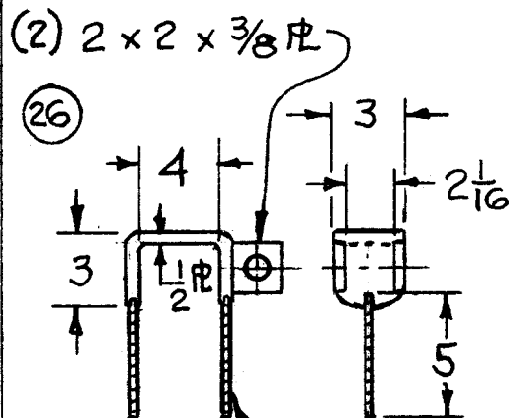
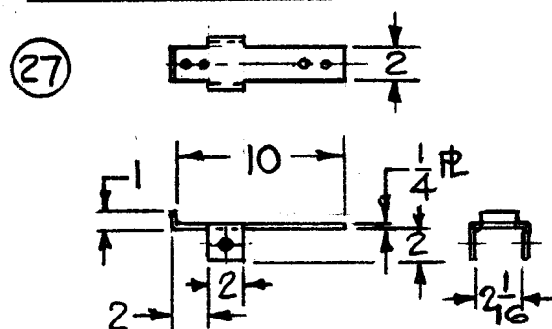
SCANNED & REVISED:
08/24/2004

DRAWING NUMBER
#0222

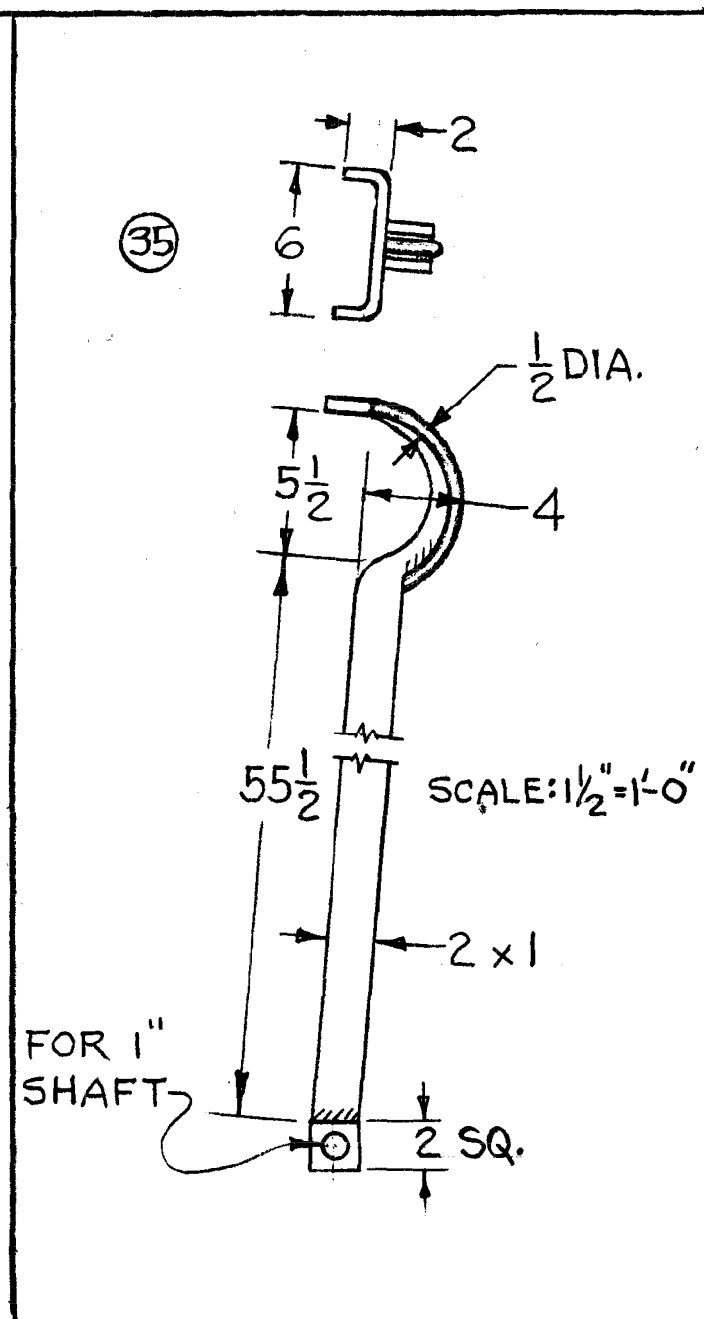
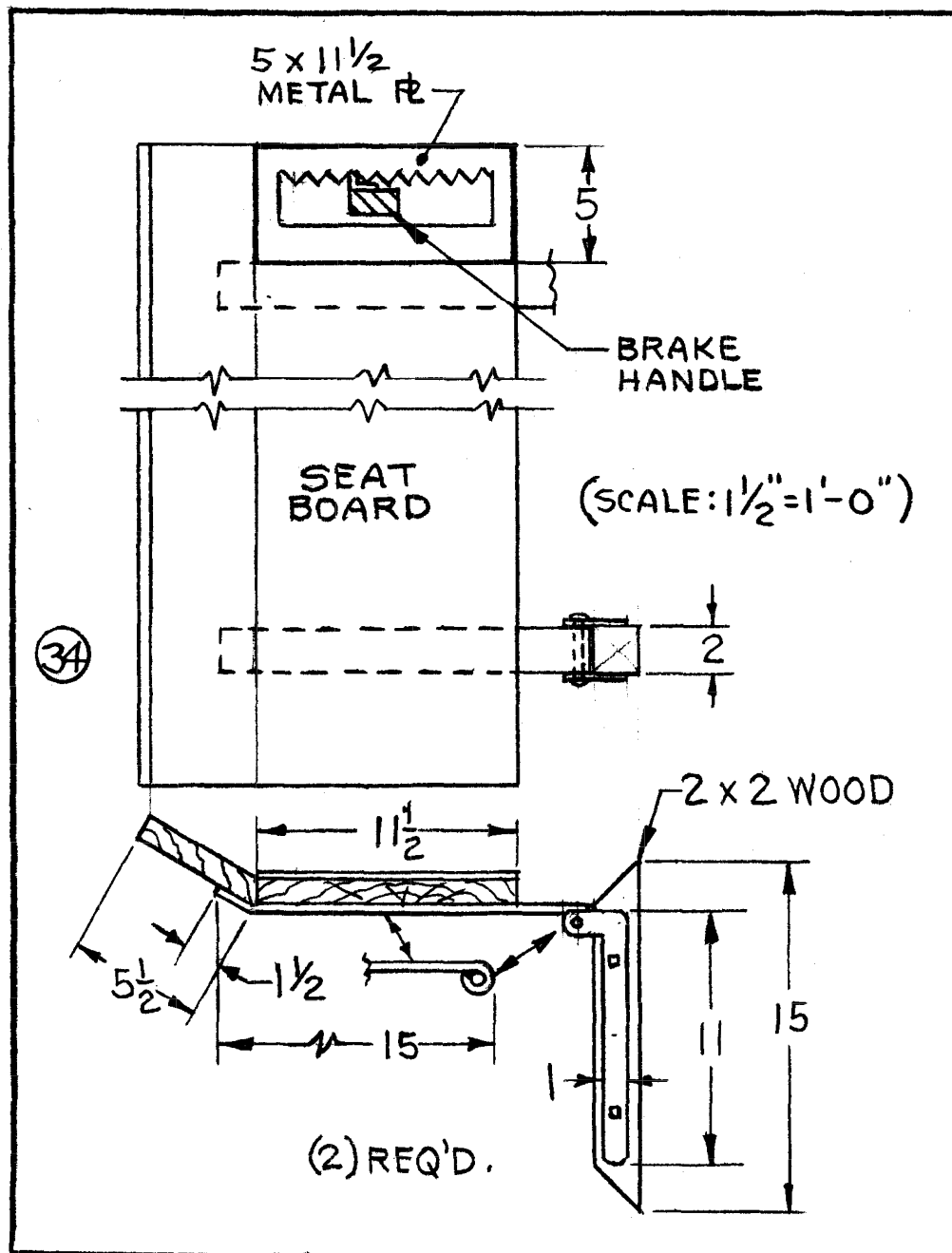
SCALE: 1" = 1'-0"



SCALE: 1" = 1'-0"



**F. J. Taylor Circus
Dragon and Mirror Tableau Wagon**



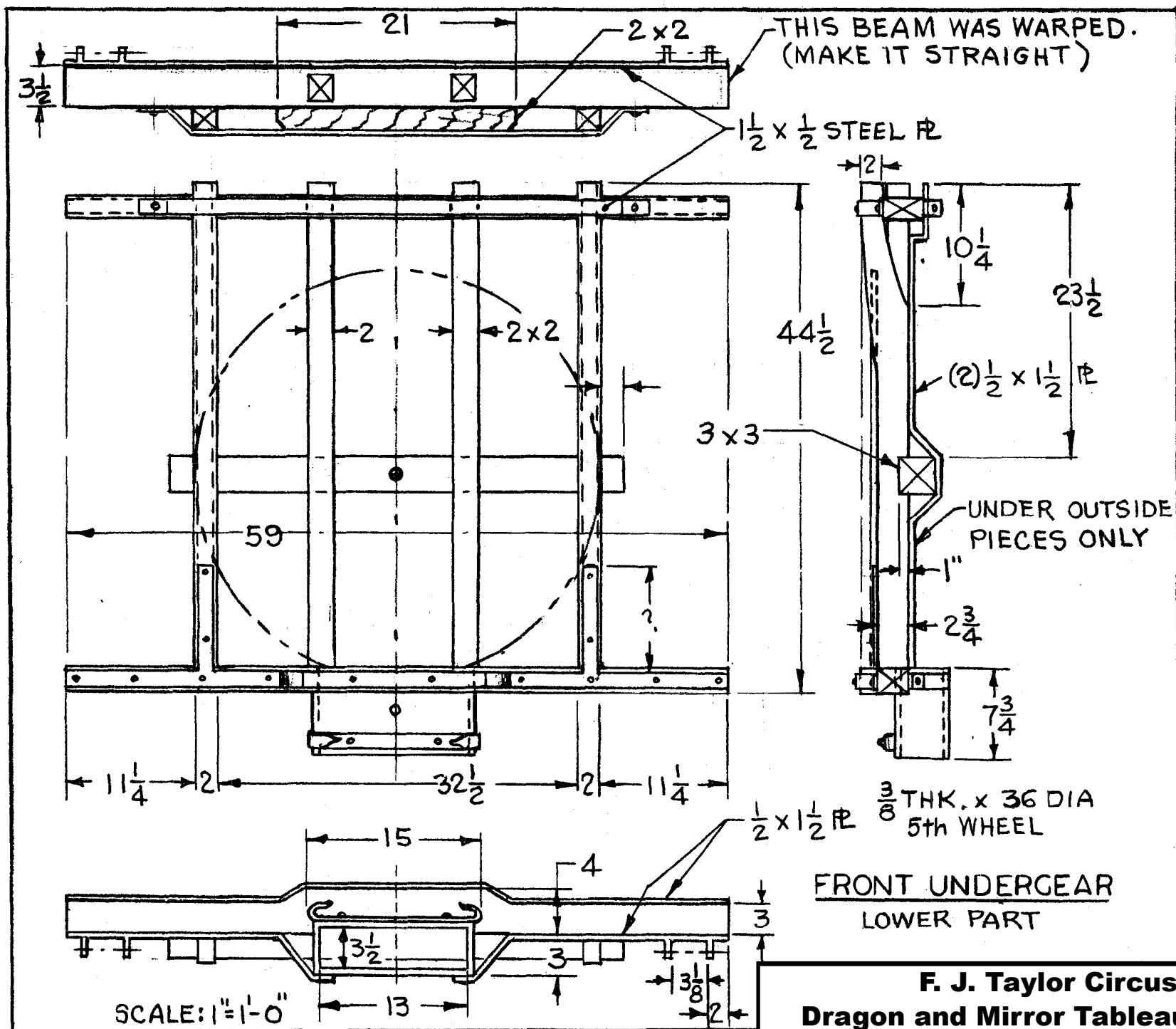
F. J. Taylor Circus
Dragon and Mirror Tableau Wagon

Pg 10 of 15

SCALE: 1/2" = 1'

SCANNED & REVISED:
08/24/2004

DRAWING NUMBER
#0222



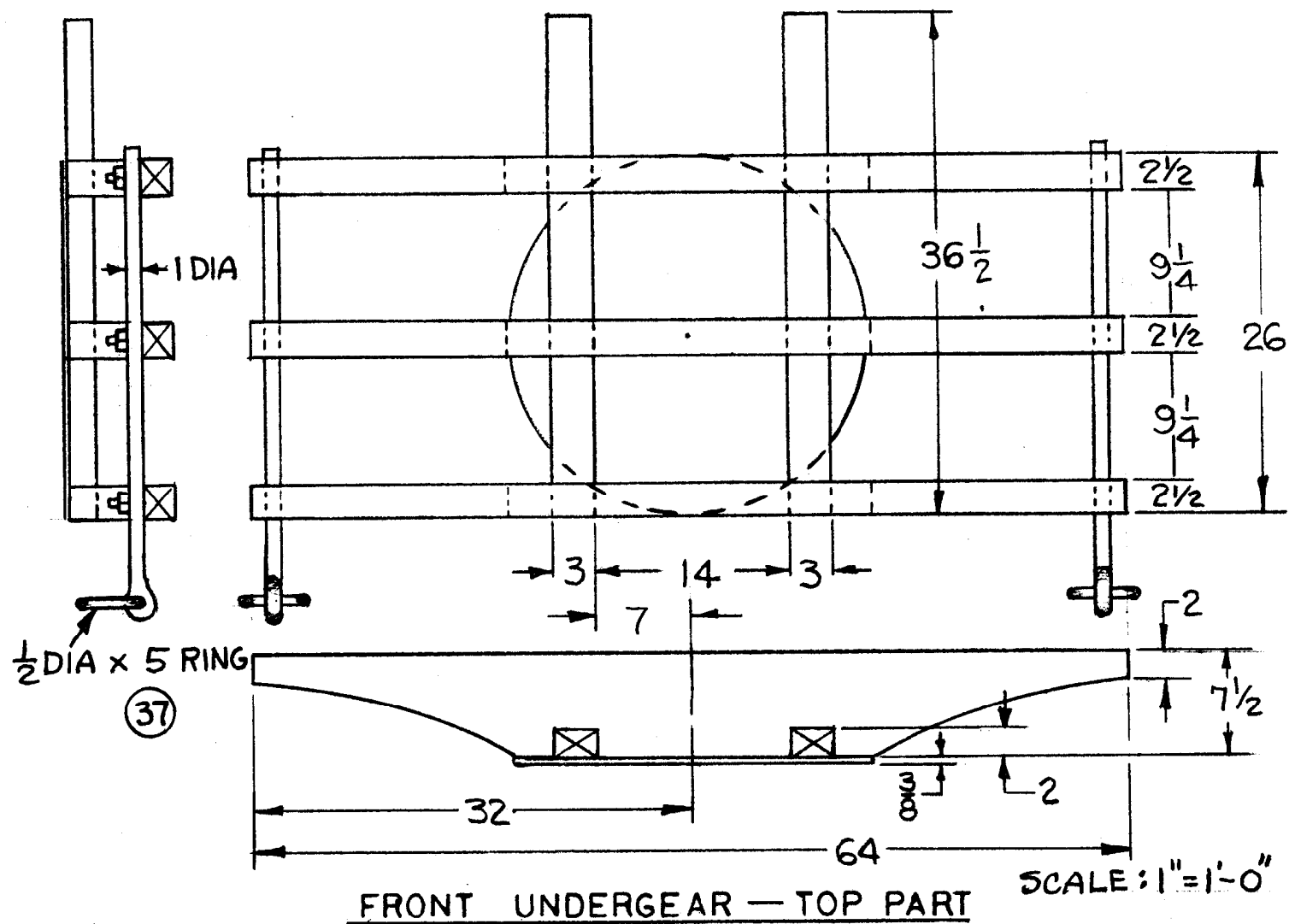
**F. J. Taylor Circus
Dragon and Mirror Tableau Wagon**

Pg 11 of 15

SCALE: 1/2" = 1'

SCANNED & REVISED:
08/24/2004

DRAWING NUMBER
#0222



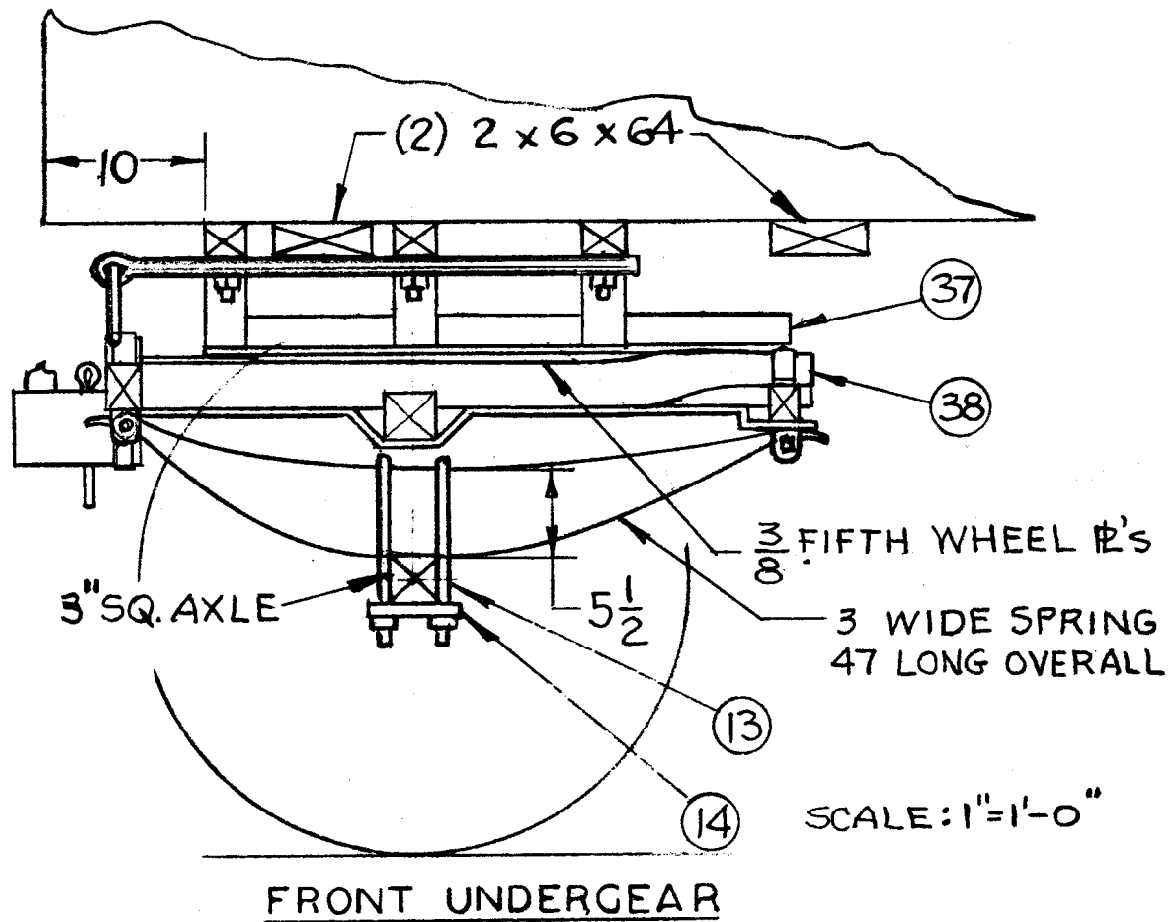
F. J. Taylor Circus
Dragon and Mirror Tableau Wagon

Pg 12 of 15

SCALE: 1/2" = 1'

SCANNED & REVISED:
 08/24/2004

DRAWING NUMBER
#0222



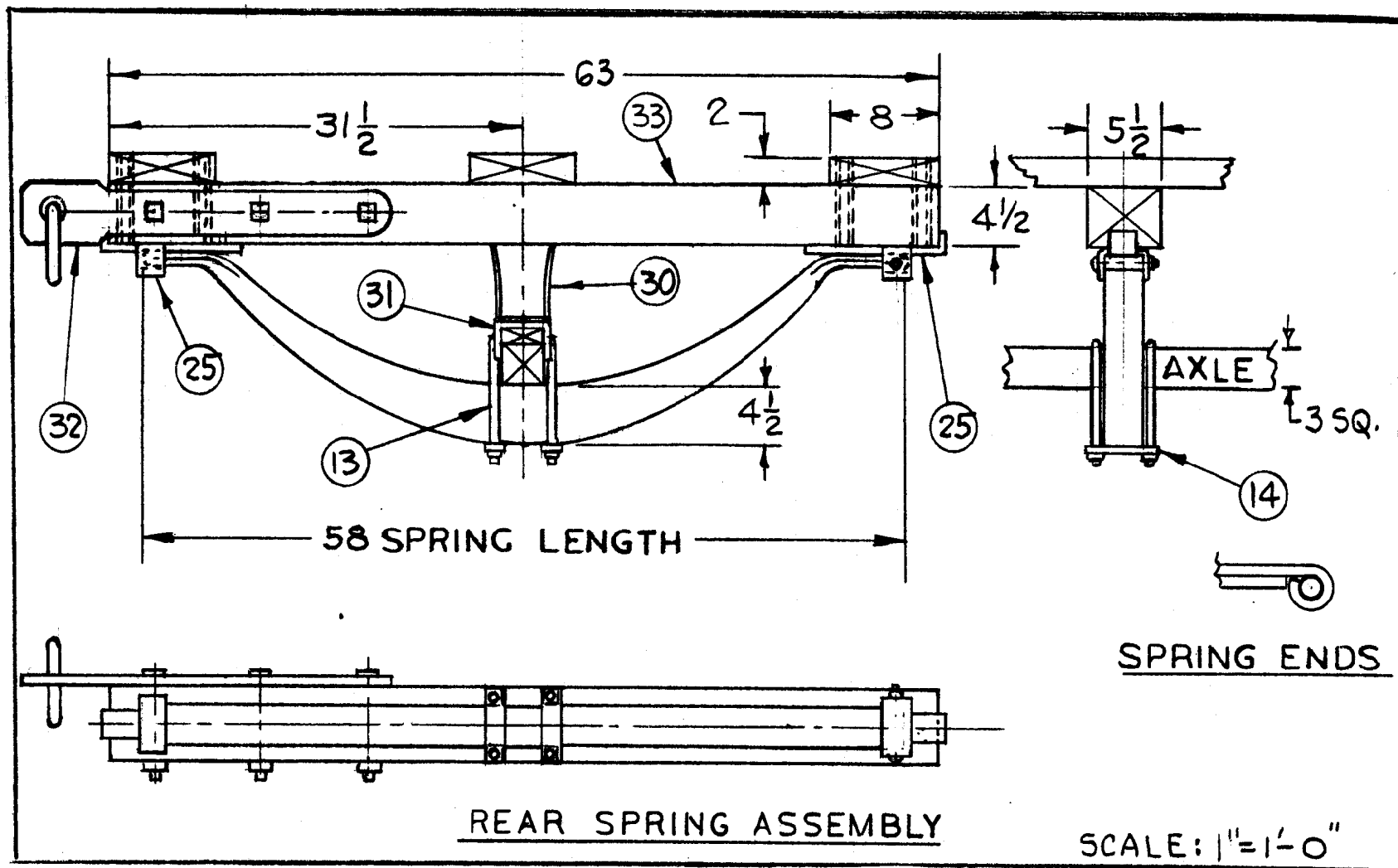
F. J. Taylor Circus
Dragon and Mirror Tableau Wagon

Pg 13 of 15

SCALE: 1/2" = 1'

SCANNED & REVISED:
08/24/2004

DRAWING NUMBER
#0222



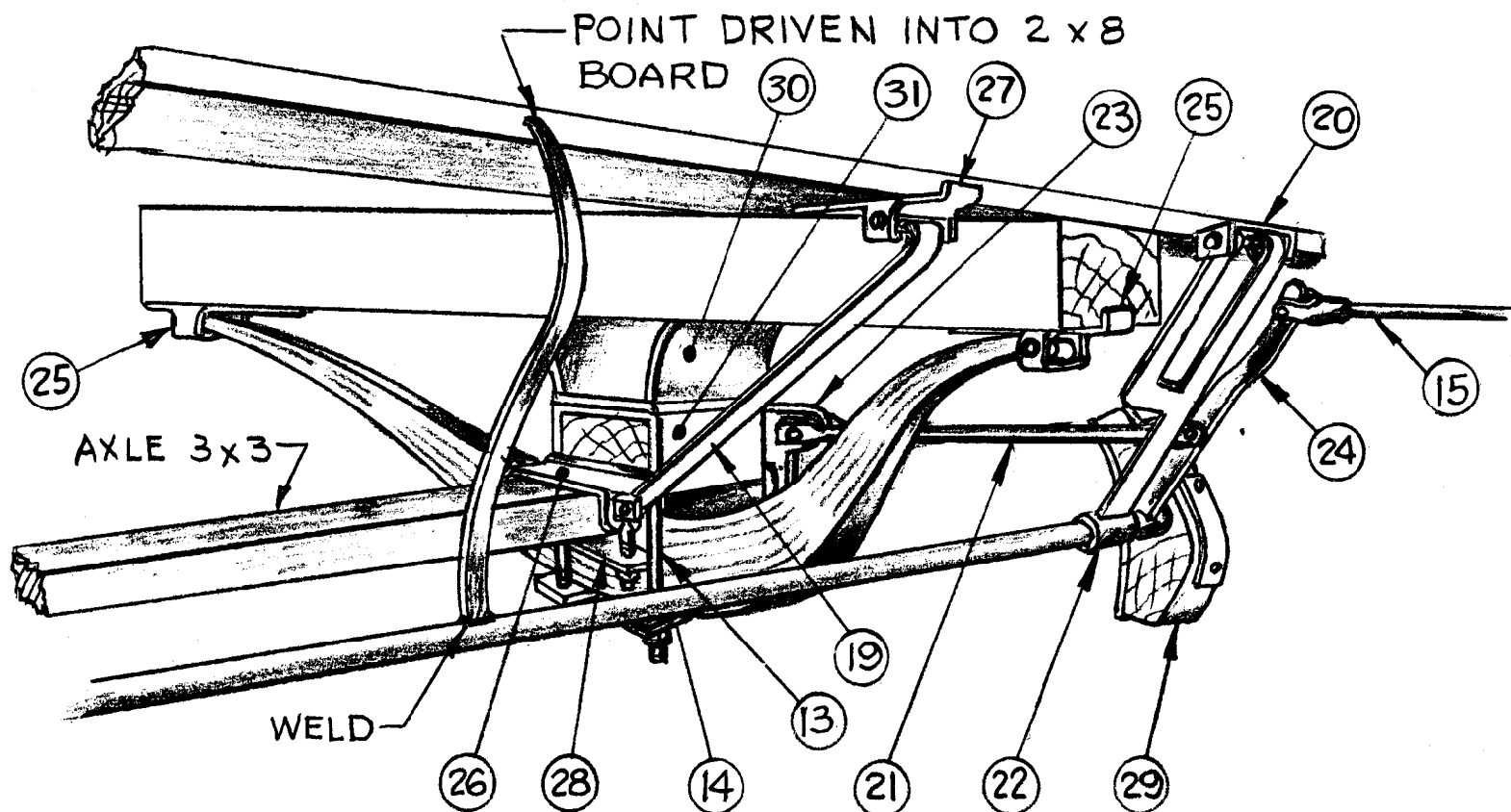
**F. J. Taylor Circus
Dragon and Mirror Tableau Wagon**

Pg 14 of 15

SCALE: $\frac{1}{2}" = 1'$

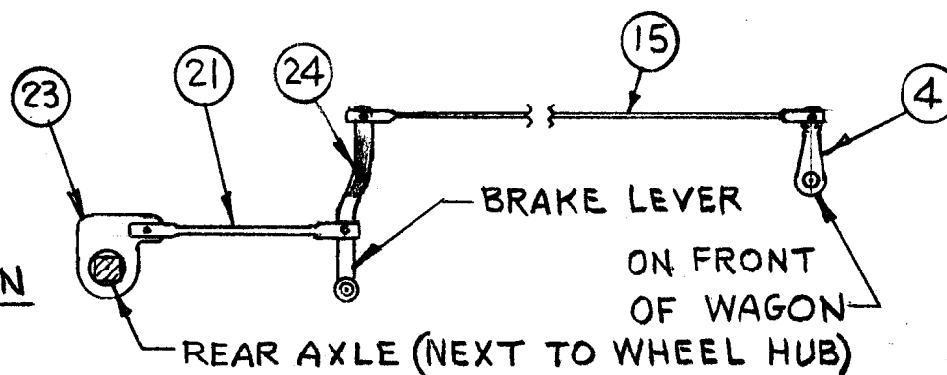
SCANNED & REVISED:
08/24/2004

DRAWING NUMBER
#0222



REAR UNDERGEAR DETAIL

SAME DETAIL ON EA. SIDE OF WAGON
BRAKE LEVERS



**F. J. Taylor Circus
Dragon and Mirror Tableau Wagon**

Pg 15 of 15

SCALE: 1/2" = 1'

SCANNED & REVISED:
08/24/2004

DRAWING NUMBER
#0222