

Wagon Tongue in Raised Position



Front View

This all steel bandstand wagon was built about the same time as the steel seating and used during the period following the Ringling fire, and on into the era of the folding seat wagons, as well. The wagon provided a very efficient bandstand to hold some of the greatest bands ever assembled by band director Merle Evans. As you will see from the plans as you build your model the wagon was a complete self contained unit which carried all its supporting jacks for the extended stands. To the best of our knowledge it was always painted silver. The interior of the wagon carried all bandstand equipment except the personal band member's instruments.

© Copyright 1999-2005 by Circus Model Builders, Inc.

This Plan replaces Plan 4

RBB&B
Bandstand Wagon No. 29

DATE: 1952

SCALE: 1/2" = 1'

SCANNED & REVISED:
01/12/03

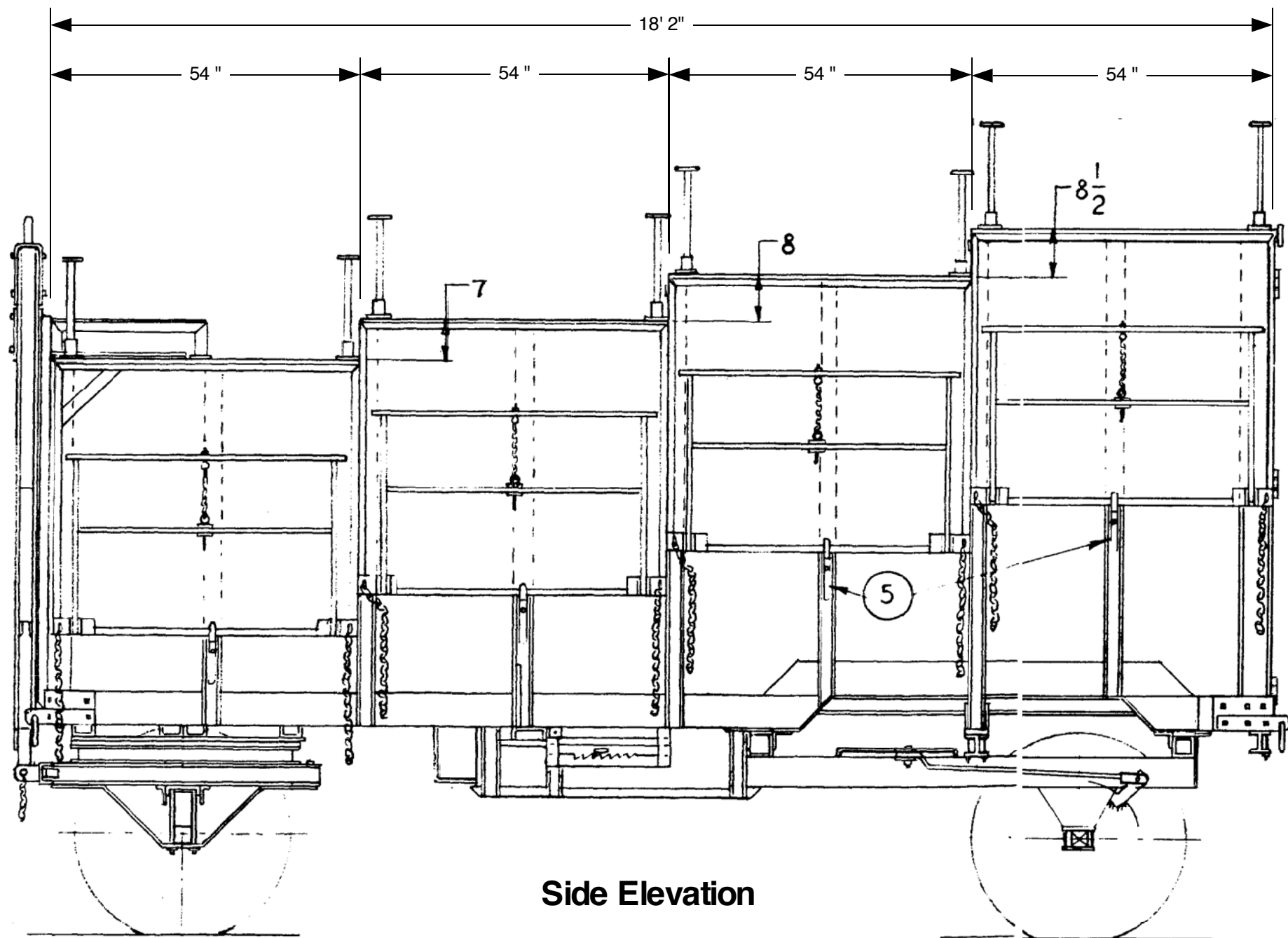
Pg 1 of 14

Circus Model Builders

Drawn By
Robert Robinson

DRAWING NUMBER

#0211



Side Elevation

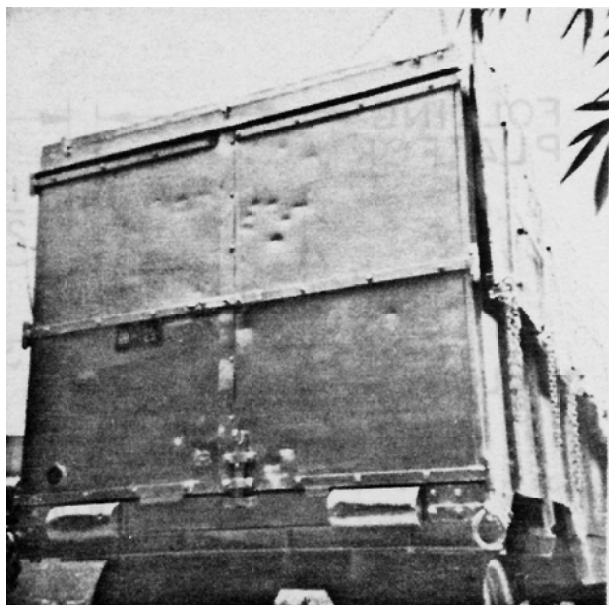
RBB&B
Bandstand Wagon No. 29

Pg 2 of 14

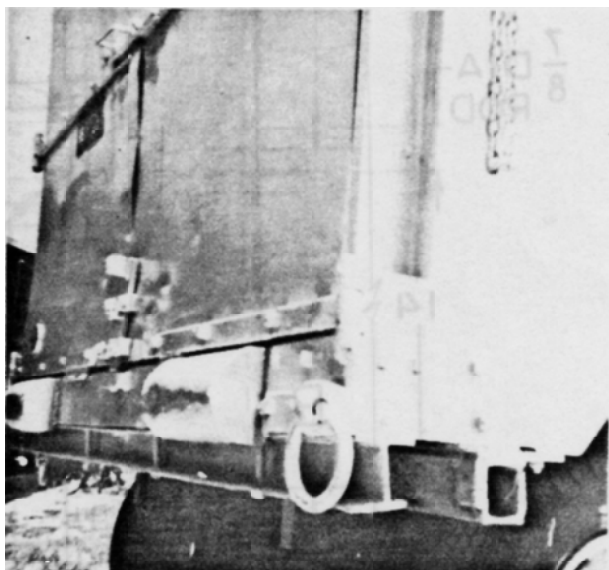
SCALE: 1/2" = 1'

SCANNED & REVISED:
 01/12/03

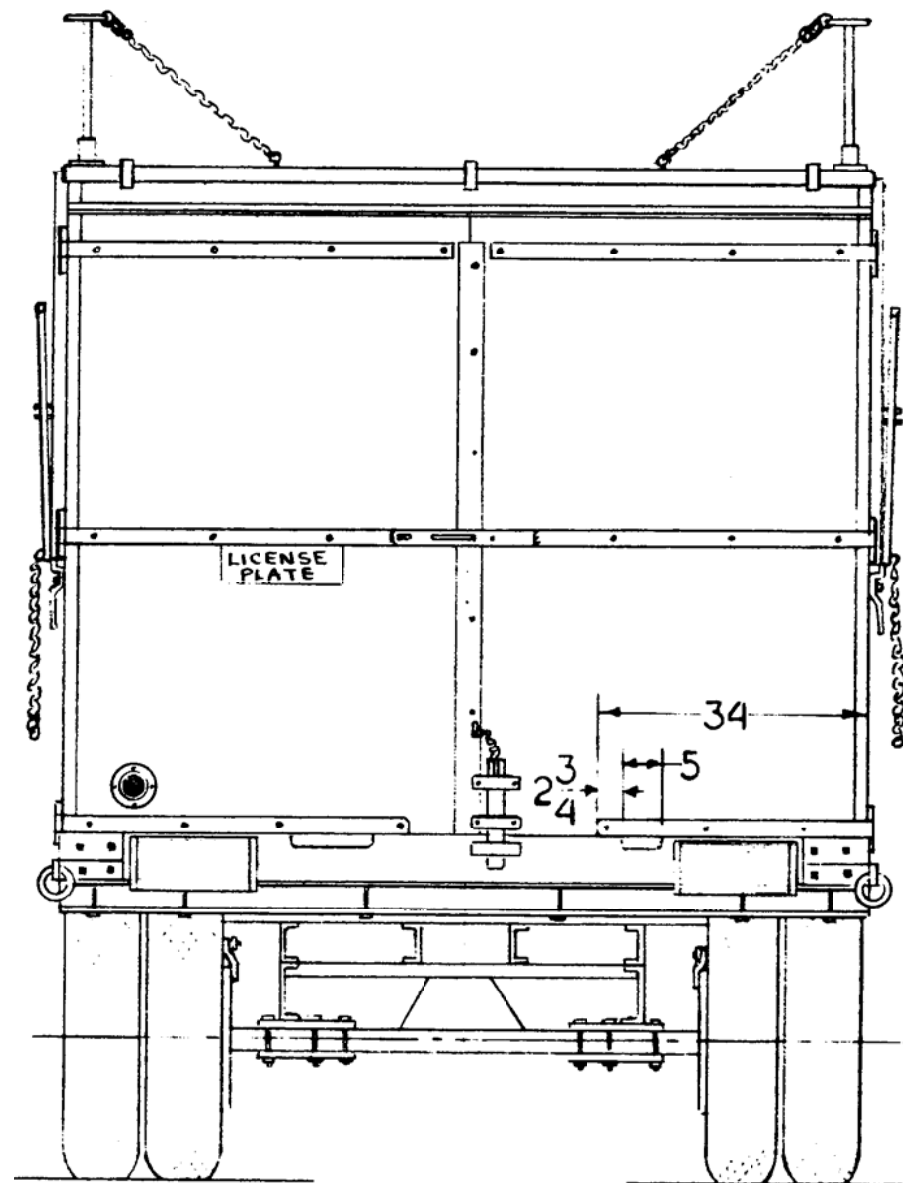
DRAWING NUMBER
#0211



Rear View



Right rear Corner & Back



Rear View

RBB&B
Bandstand Wagon No. 29

Pg 3 of 14

SCALE: 1/2" = 1'

SCANNED & REVISED:
01/12/03

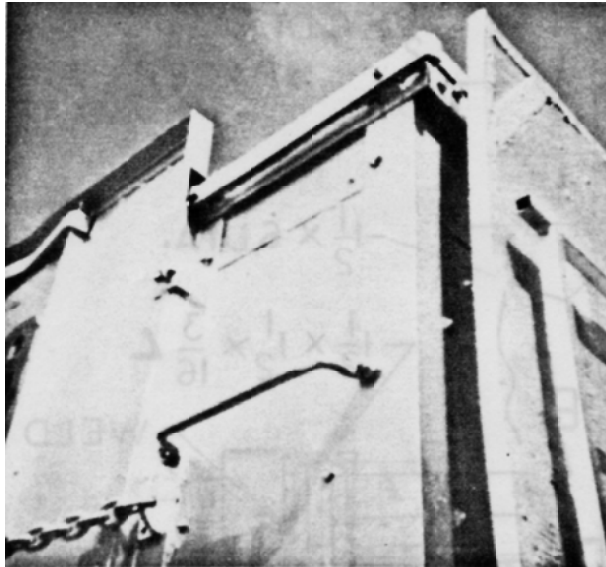
DRAWING NUMBER
#0211



Rear Three-Quarter View



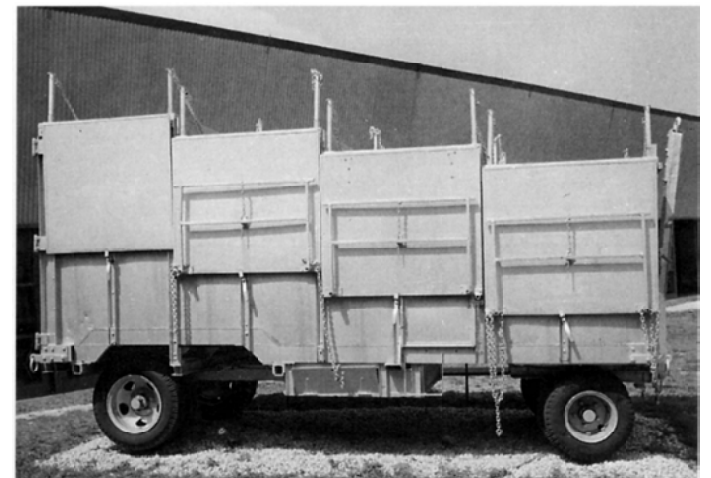
Front Three-Quarter View



Front Roof Corner

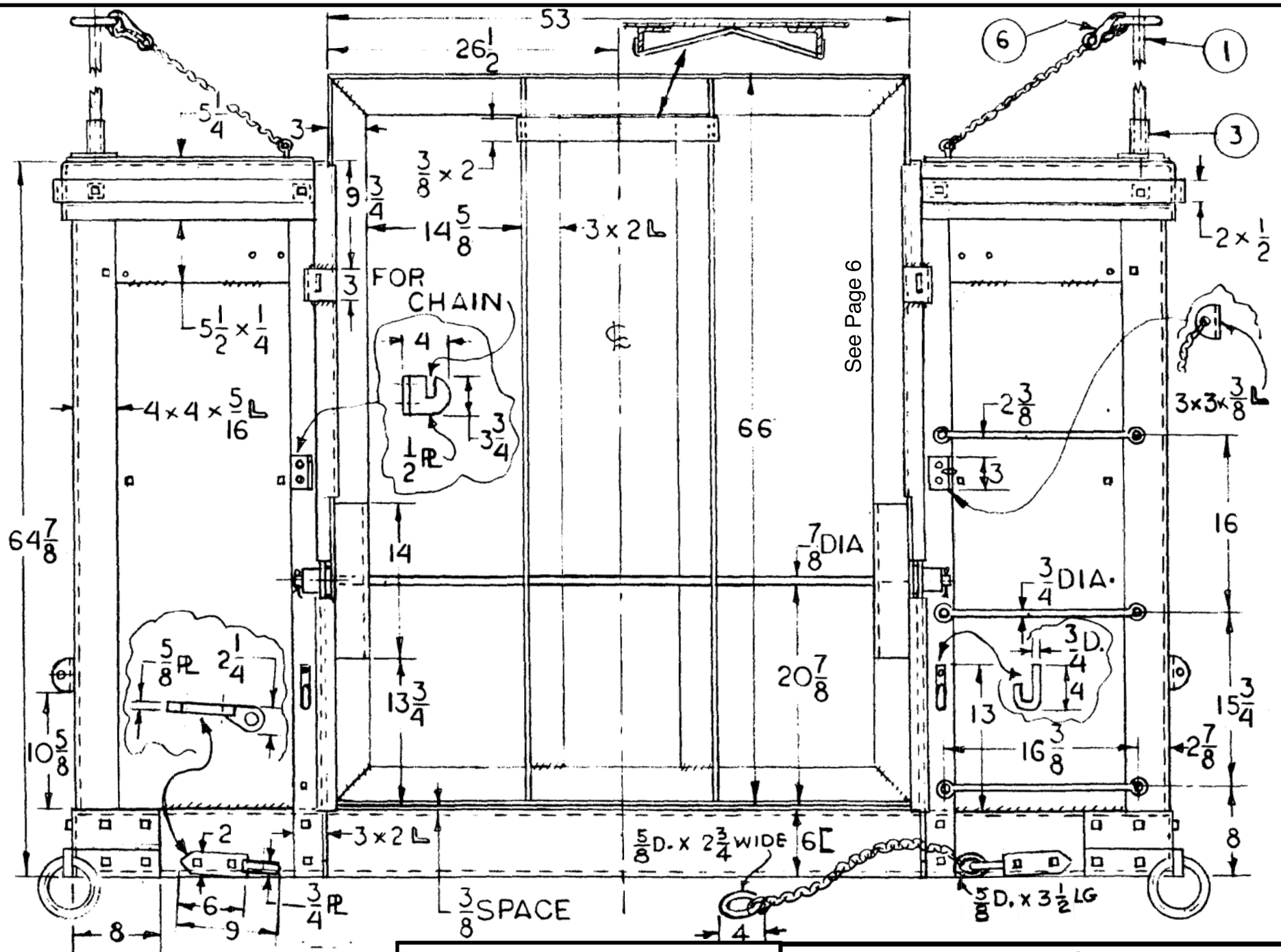


Front Bottom Corner

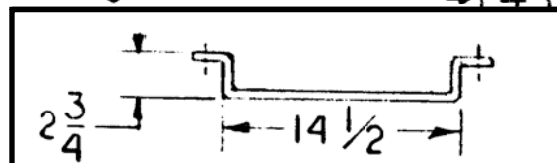


Side View

RBB&B
Bandstand Wagon No. 29



Front End Detail
(This page 1" = 1')



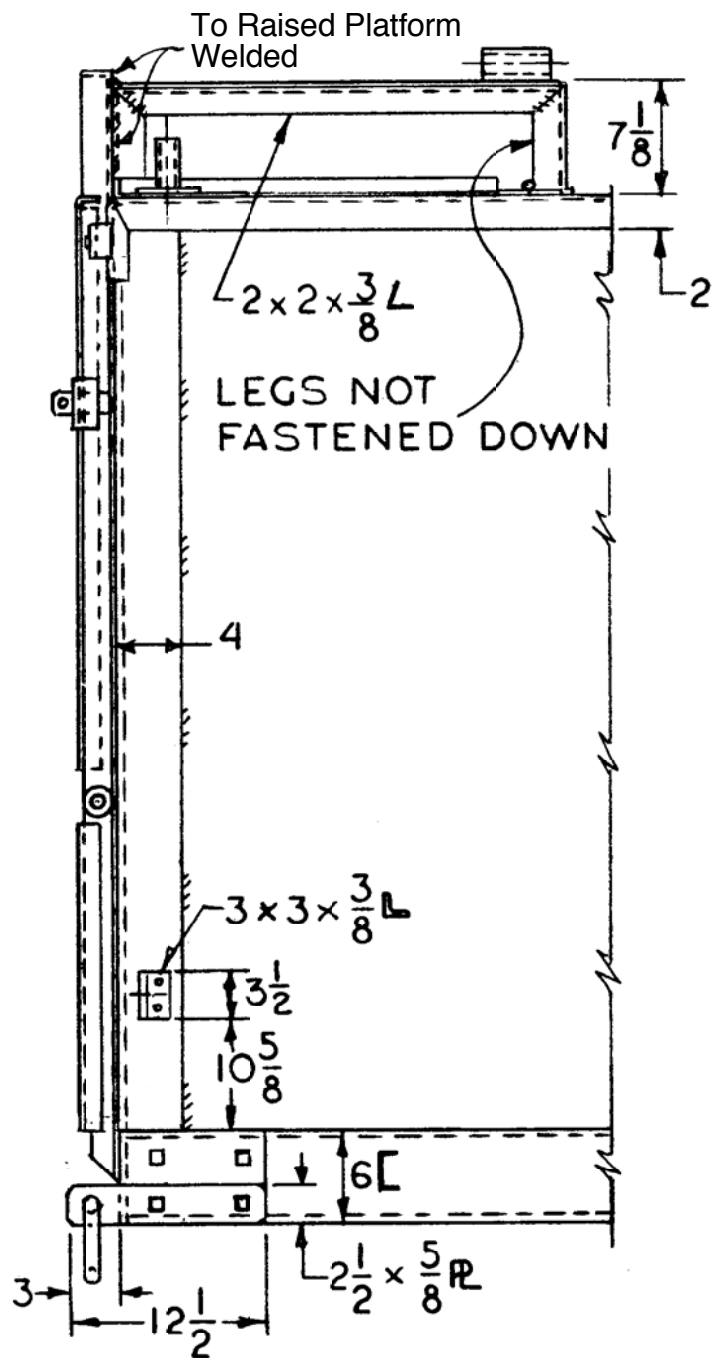
RBB&B
Bandstand Wagon No. 29

Pg 5 of 14

SCALE: 1" = 1'

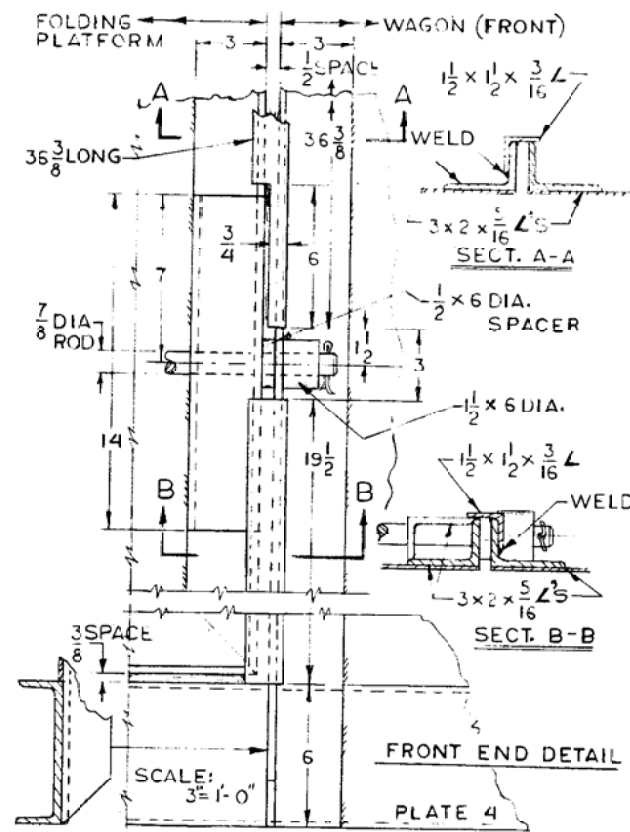
SCANNED & REVISED:
01/12/03

DRAWING NUMBER
#0211



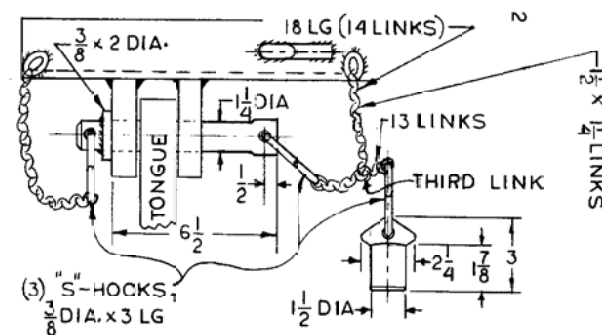
Side View Front End

1" = 1'



Front End Detail

1 1/2" = 1'



Wagon Tongue Connections

1 1/2" = 1'

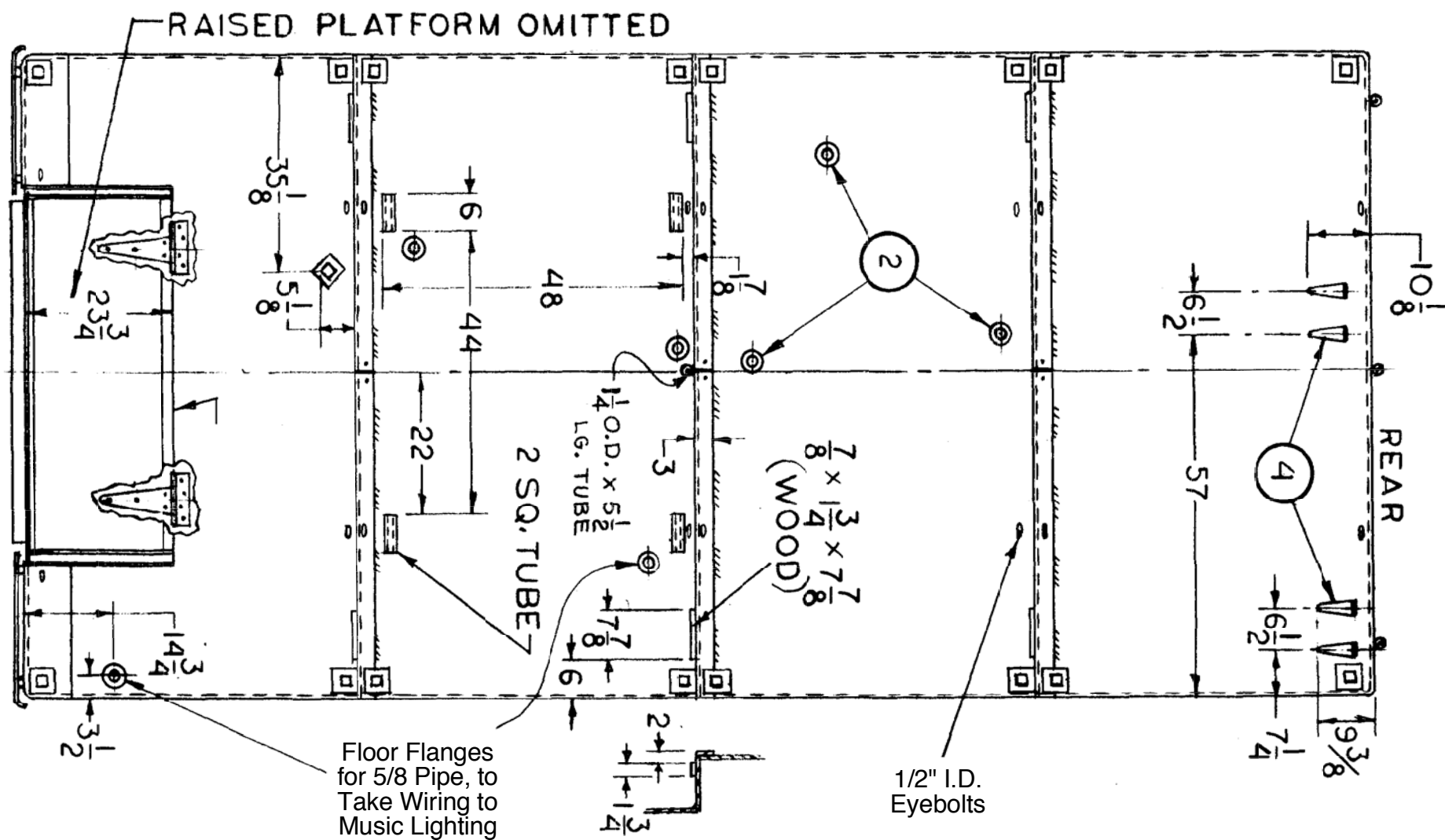
RBB&B
Bandstand Wagon No. 29

Pg 6 of 14

SCALE: See Plate

SCANNED & REVISED:
01/12/03

DRAWING NUMBER
#0211



Roof View

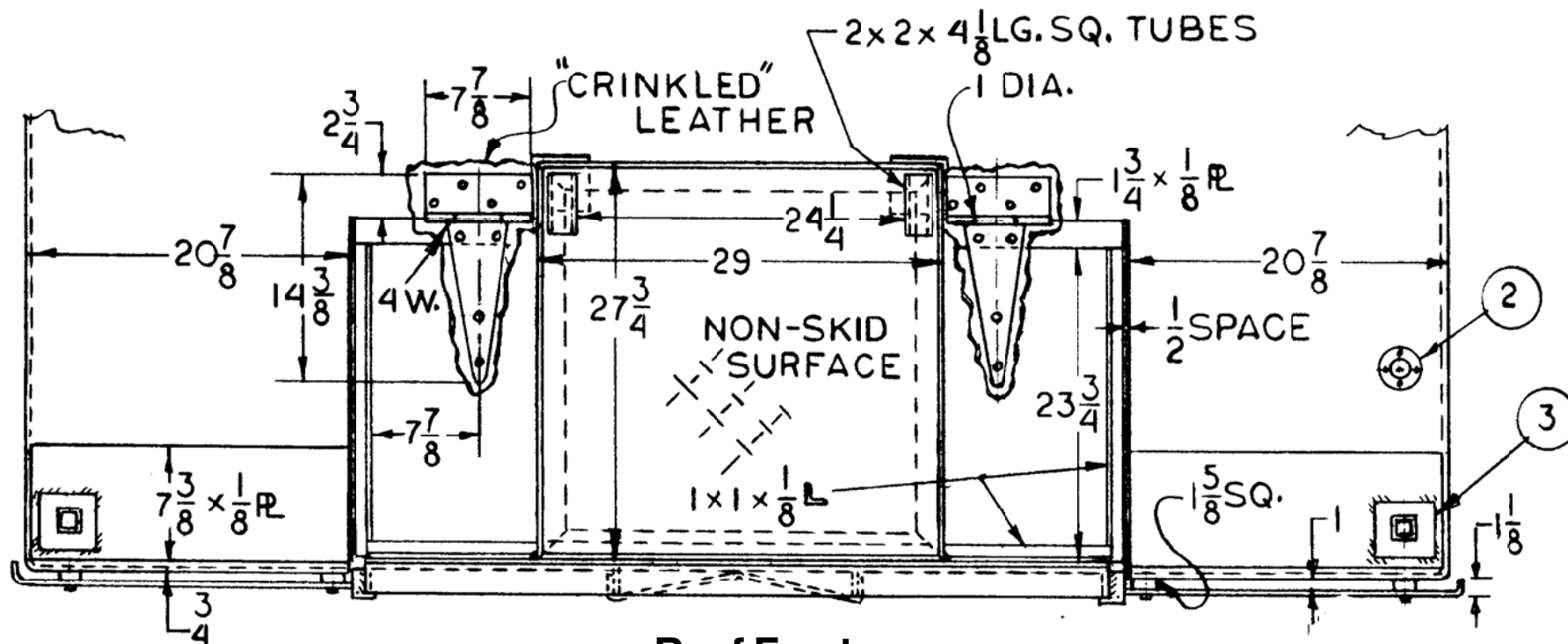
RBB&B
Bandstand Wagon No. 29

Pg 7 of 14

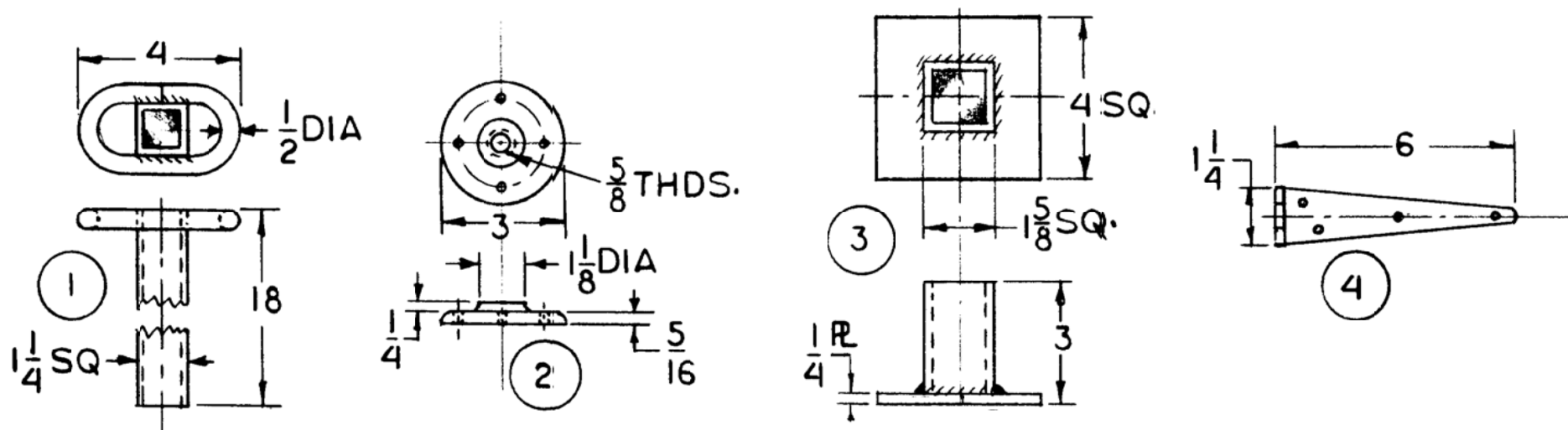
SCALE: 1/2" = 1'

SCANNED & REVISED:
 01/12/03

DRAWING NUMBER
#0211



Roof Front (1"=1')



Roof Details (3"=1')

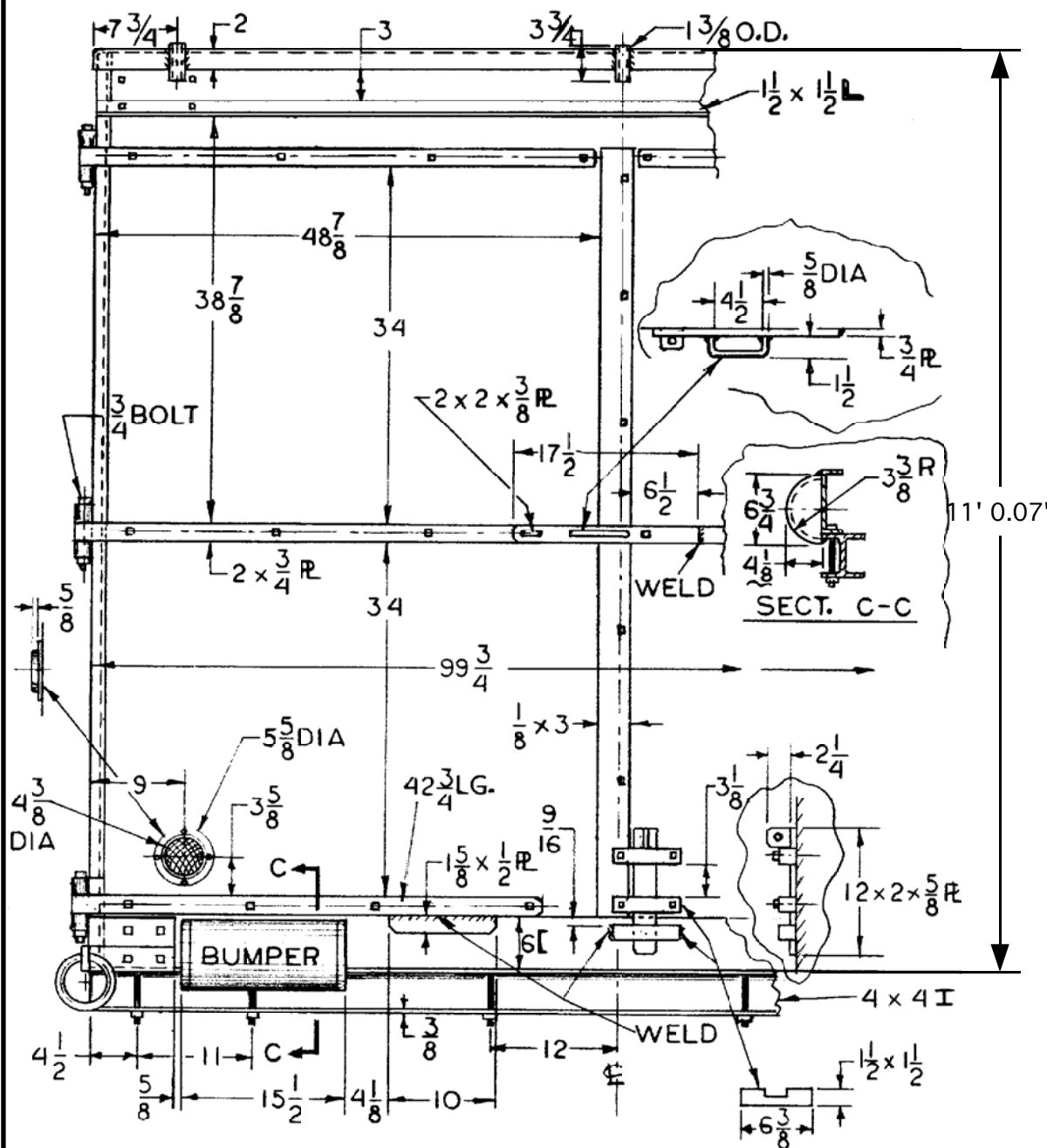
RBB&B
Bandstand Wagon No. 29

Pg 8 of 14

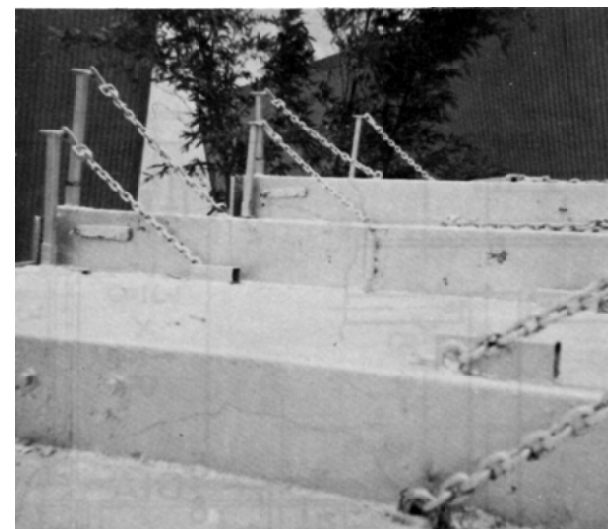
SCALE: See Plate

SCANNED & REVISED:
01/12/03

DRAWING NUMBER
#0211



Rear View (3/4"=1')



Bandstand Wagon Roof Detail looking from front to rear on both photos



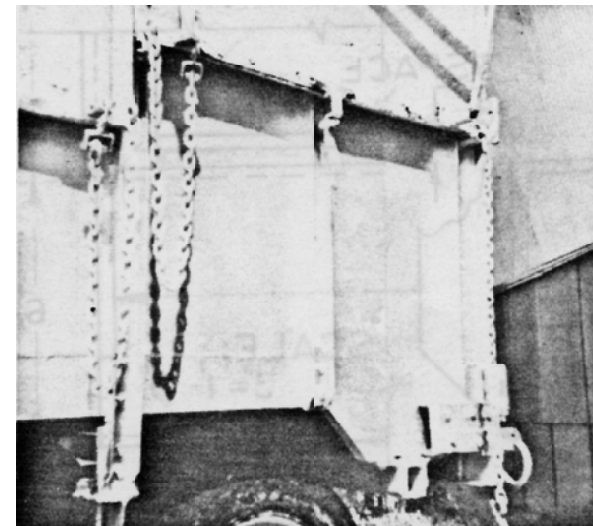
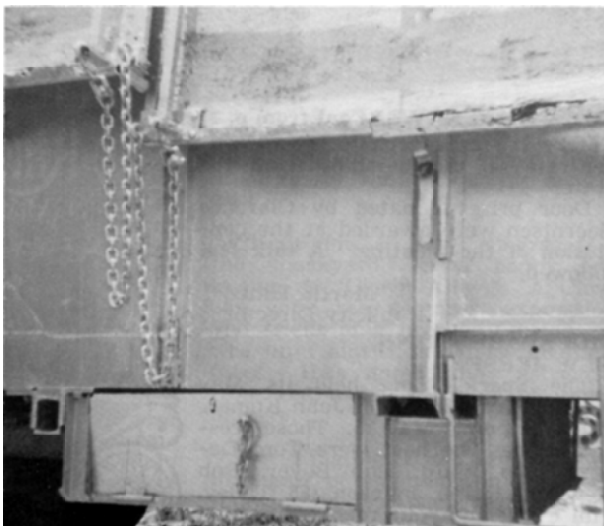
RBB&B
Bandstand Wagon No. 29

Pg 9 of 14

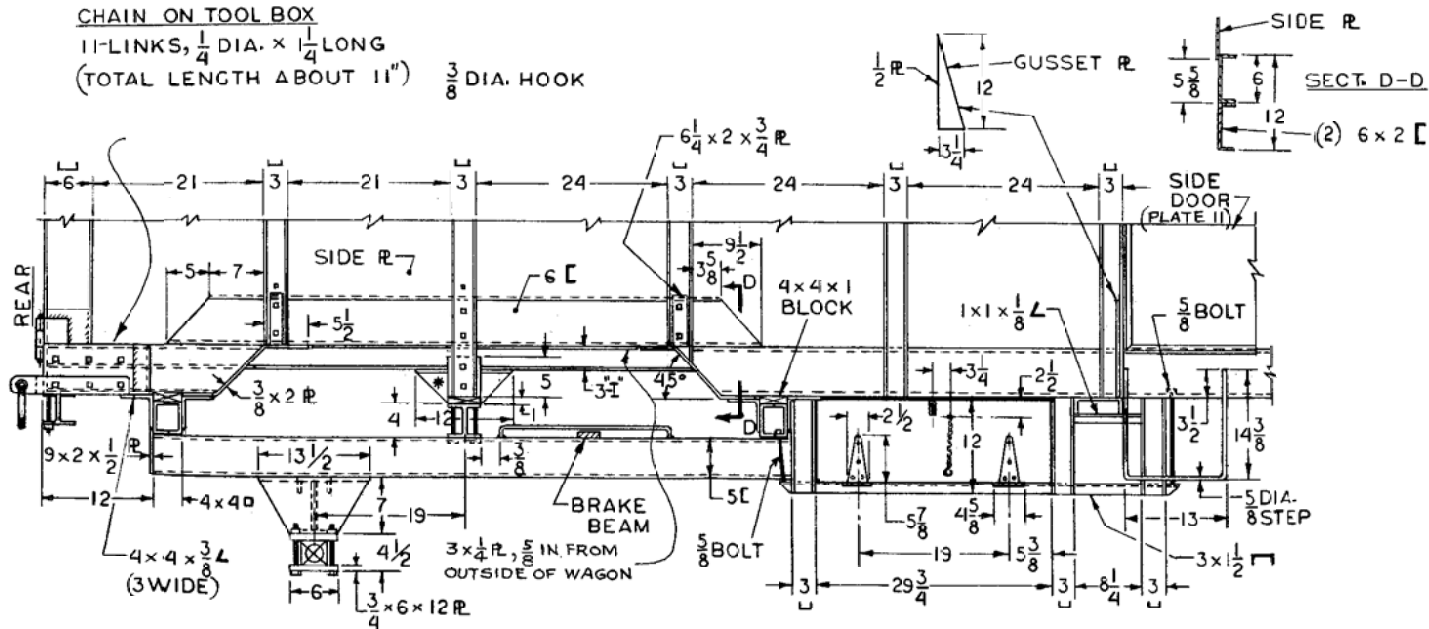
SCALE: 3/4" = 1'

SCANNED & REVISED:
01/12/03

DRAWING NUMBER
#0211



CHAIN ON TOOL BOX
11-LINKS, $\frac{1}{4}$ DIA. \times $\frac{1}{4}$ LONG
(TOTAL LENGTH ABOUT 11") $\frac{3}{8}$ DIA. HOOK



Elevation

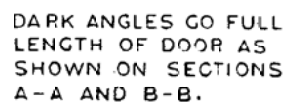
RBB&B
Bandstand Wagon No. 29

Pg 10 of 14

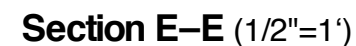
SCALE: $1/2'' = 1'$

SCANNED & REVISED:
01/12/03

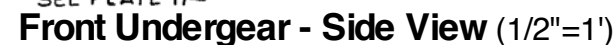
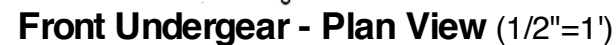
DRAWING NUMBER	#0211
----------------	-------



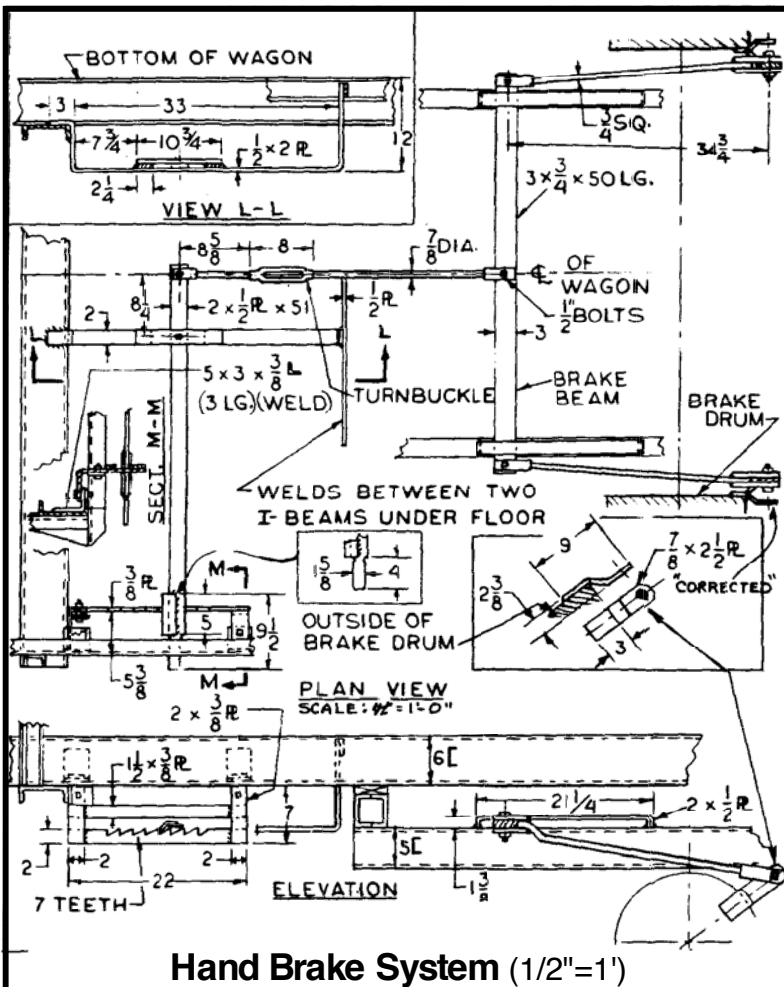
Section H-H (3''=1')



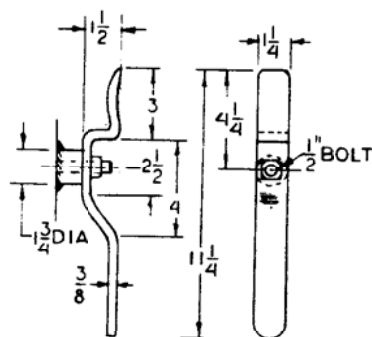
RBB&B
Bandstand Wagon No. 29



Bandstand Wagon No. 29



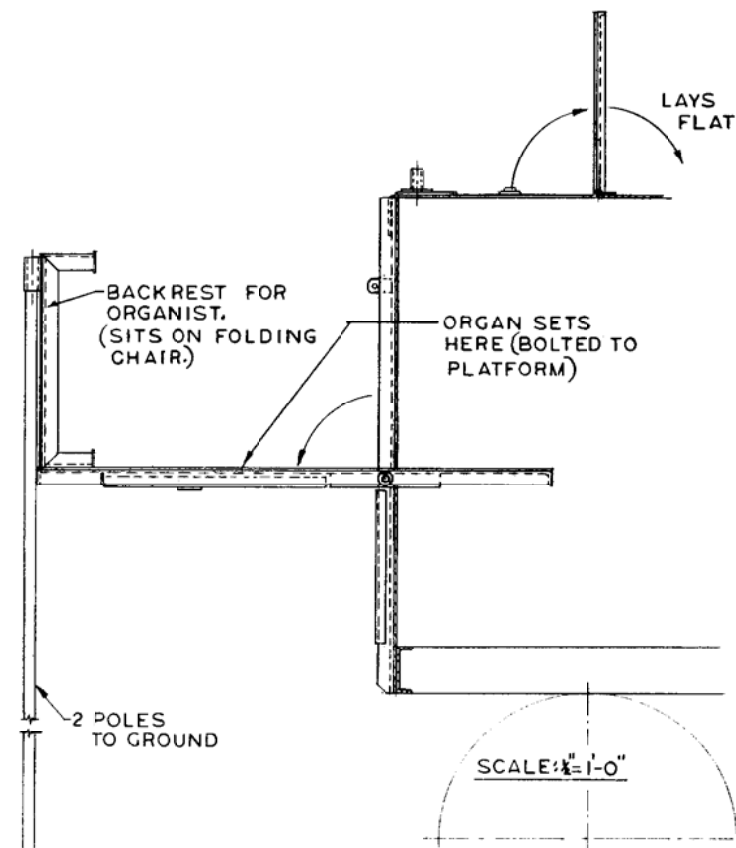
Hand Brake System (1/2"=1')



Folding Platform Locking Device (1 1/2"=1')

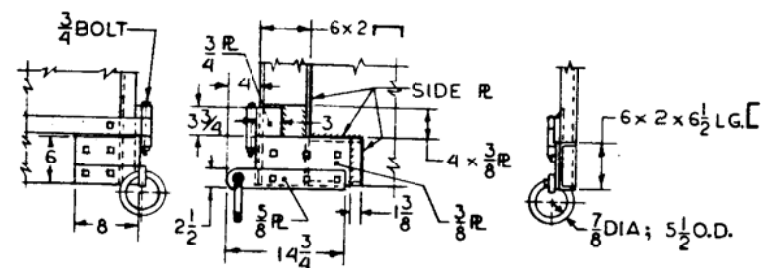
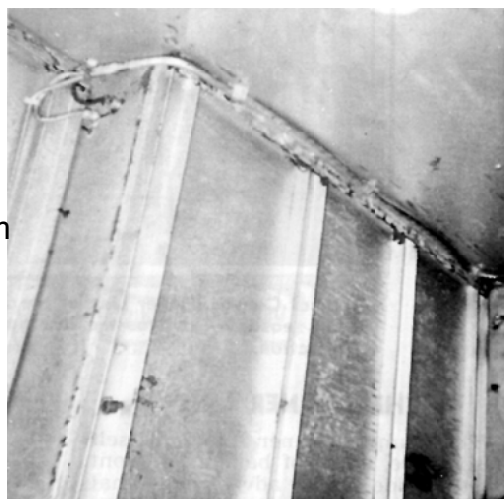


Door Hinge (1/2"=1')



Organ Arrangement (1/2"=1')

Portion of interior roof view shown from rear door.



Mud Ring Bracket (1/2"=1')

**RBB&B
Bandstand Wagon No. 29**

Pg 13 of 14

SCALE: See Plate

SCANNED & REVISED:
01/12/03

DRAWING NUMBER
#0211

Technical drawing showing two views of a screw handle assembly:

- END VIEW:** Shows the circular end of the handle with a central hole for a screw. A label "END VIEW" is at the bottom left.
- SIDE VIEW:** Shows the handle's profile. It consists of a vertical pipe section with a flange at the top and a base. Labels include:
 - "NEXT HIGHER PLATFORM" at the top.
 - " $\frac{1}{2}$ DIA. PIN" pointing to a pin in the upper section.
 - "PLATFORM" pointing to the flange.
 - " $\frac{1}{4}$ PIPE ($\frac{3}{4}$ DIA.)" pointing to the main vertical pipe.
 - "DRAWN TO $1\frac{1}{2} = 1'-0"$, BUT WITH FEW DIMENSIONS TO GO ON." pointing to the side view.
- SCREW HANDLE:** A label pointing to the base of the handle.
- SCREW:** A label pointing to the screw passing through the base.
- $\frac{1}{2}$ PIPE ($\frac{3}{4}$ DIA.):** A label pointing to the base pipe section.

Snap Hook
(1 1/2"=1")



DRAWING NUMBER
#0211