

The photos of the RBBB Mack LJ trucks are of unknown origin and location.



Between the years 1940 and 1956, the Mack Manufacturing Corporation built nearly 14,000 LJ series trucks. Some of those vehicles were used by the circus as water trucks, in some cases to replace aging Mack A/C 4 models, in use since the late 1920's.

Ringling Bros. Barnum and Bailey purchased their first LJ models in late 1946 or early 1947. Photographs show this style water truck on the 1947 show, but none have turned up prior to that time. Cole Bros. Circus also used the LJ model truck in the late 1940's and early 1950's during the time the show was under the direction of Jack Tavlin.

A 1955 equipment listing of the Ringling Bros. Barnum and Bailey show lists six of the LJ Model water trucks. One can assume they may have carried the same number in their final year on the road as a tented circus in 1956.

In 1949, Cole Bros. had at least two, and possibly three of the LJ Model Macks on the show. The Cole Macks were numbered 1 and 3, leading to speculation that there may have been a "2". These trucks were with the show when it arrived at the former Terrell Jacobs winterquarters in Peru, Indiana in the fall of 1950. There is no record they went with the arena shows in 1951 and when equipment was sold off in 1952, the Mack trucks were sold to concerns outside of show business.

The accompanying drawings with this article are photocopies, taken from original drawings prepared by Mack as an aid for body builders. The drawings were made available by CMB member Bruce Kleppinger through the courtesy of his father Roland, who spent 45 years as a Mack employee. The drawings are just a bit under 1/4 scale.

RBBB

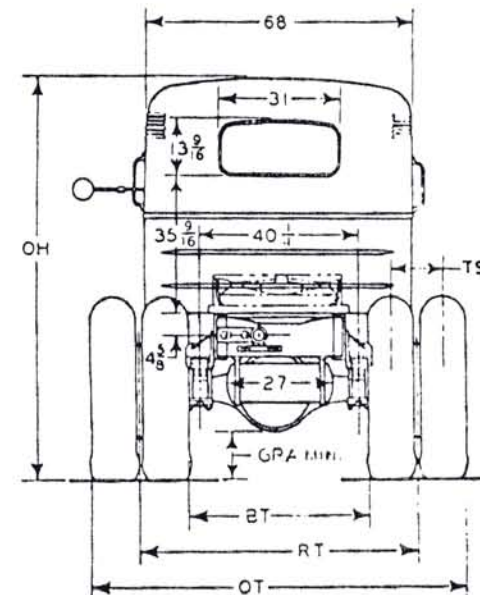
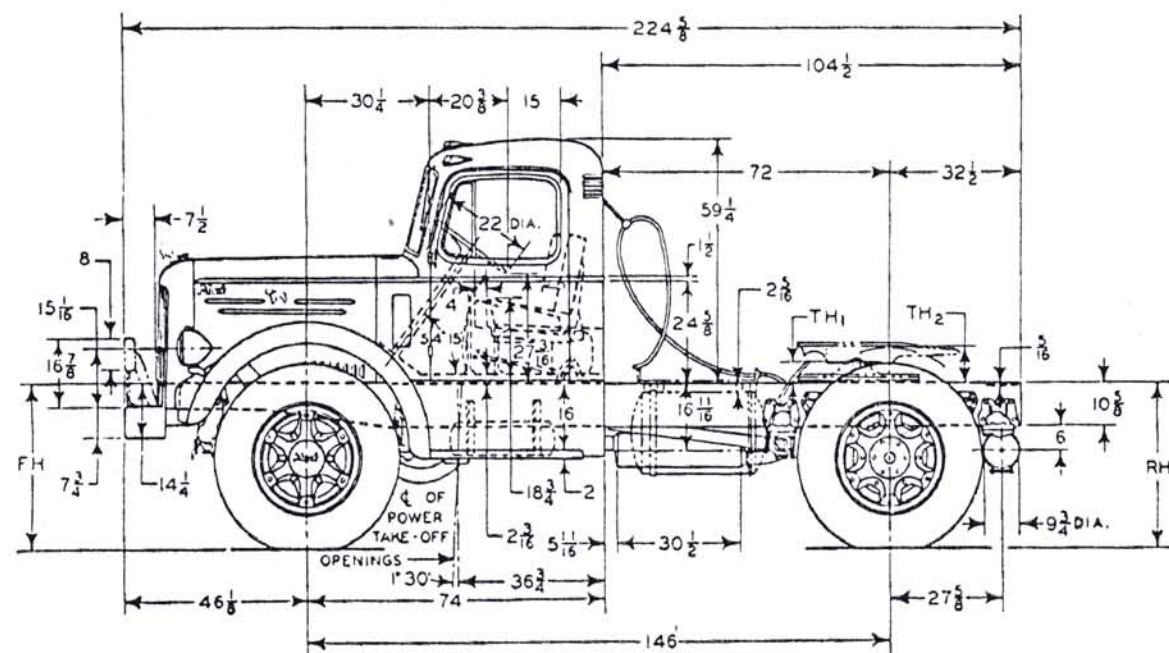
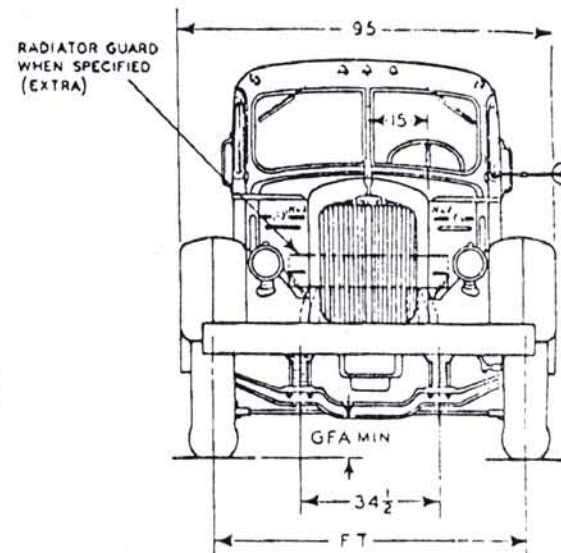
Mack Water Truck No. 233

| | | | |
|---------------|------------------|--------------------------------|-----------|
| DATE: 1946-56 | SCALE: 1/4" = 1' | SCANNED & REVISED: 01/19/04 | Pg 1 of 2 |
|---------------|------------------|--------------------------------|-----------|

Circus Model Builders

Drawn By
Charles L Shaffer

DRAWING NUMBER
#0281



BODY BUILDER'S DIAGRAM

RB
Mack Water Truck No. 233

DRAWING NUMBER
#0281