



*Zacchini Cannon - Oswald Photo 1*

Harold Barbour, Jr., from Indian Harbor Beach, Florida, provided the first plan of the 1927 version. So you 1/4" scale builders will have no trouble in making this cannon as it is all spelled out for you. Photos from other members whom I shall list accompany this plan and are as follows.

Photos Number 1-2-3 and 4. Number 4 shows Hugo and his brother in 1934. They are from member A. Bruce Tracy of Locke, N.Y.

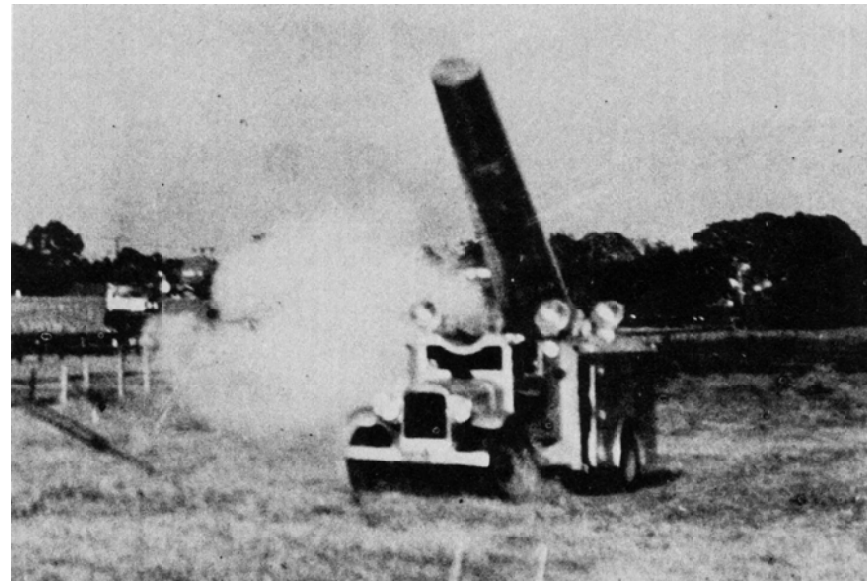
Photos Number 5 and 6 were taken during the 1960 season and these photos are from member Alan Bantz, Lincoln, Nebraska.

Next we have another plan of the cannon, the 1929 version complete with the tail fins and tubes. We are grateful to member TSgt. Don Oswald of the Air Force, based in California. This plan was drawn on the spot at the Hugo Zacchini winter quarters in California, and believe us, permission to use this plan was granted by Hugo Zacchini in the winter of 1975. There is no doubt Don has spent much of his off time from the base at this location drawing and measuring this cannon, and writing the history accompanying this plan. Don also provided the following history and Comments.

This is a 1929 White. The first off the Cleveland, Ohio production line for that year. Basically the truck is all aluminum. Originally the engine block was also aluminum but it has had several since then. The barrel was made by Alcoa for this particular truck. It is 21 feet 14 inch long. It is 44 inches diameter at the back and 36 1/2 inches diameter at the mouth. The wall is 3/16" at the mouth and four inches thick at the back. As photographed the truck is all silver, except the barrel which is white. The crest of the upper fin is green, white and red. I, incidentally have the crest laying here beside me now, as the truck is in the process of being refurbished.

The readers might be interested also in knowing that both sides are hinged to lift up to provide a porch-like arrangement. Under the portion that lifts is

© Copyright 2018 by Circus Model Builders, Inc.



*Zacchini Cannon 1930's View at Shreveport, LA - Conover Collection*

the original side. The back left corner of the truck contains two doors. The upper is a two burner Coleman stove (gas) and the bottom is a compartment to carry dishes. Opposite the main control panel behind the cab is another panel. The main control panel is on the right and can be seen in photos 1, 6, 7, and 8.

The panel on the left side of the truck behind the cab is actually a door, which leads into a bedroom on wheels. Beneath the barrel is a double bed and two small dressers. Papa used this to rest in prior to buying a trailer which he hauled after leaving Ringling Bros.

Of the 11,000 plus jumps he made from the cannon, there was only one accident. That was when a rigger with the Clyde Beatty Show failed to pull a guy line far enough out of the way for papa to clear. Fortunately he was not seriously hurt to the point of being disabled, although it did cause him some problems for a while.

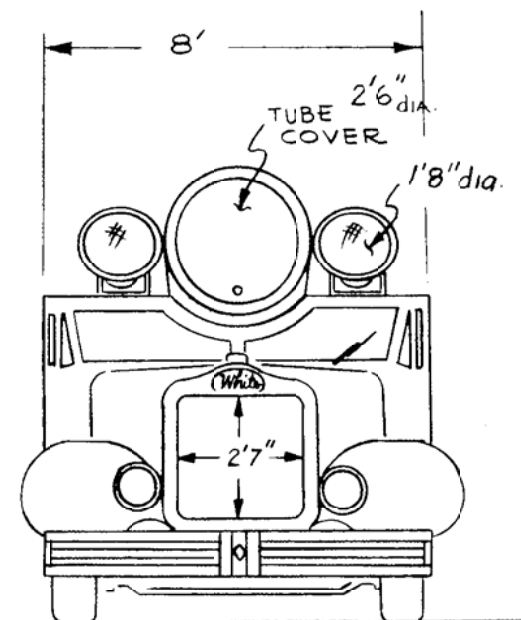
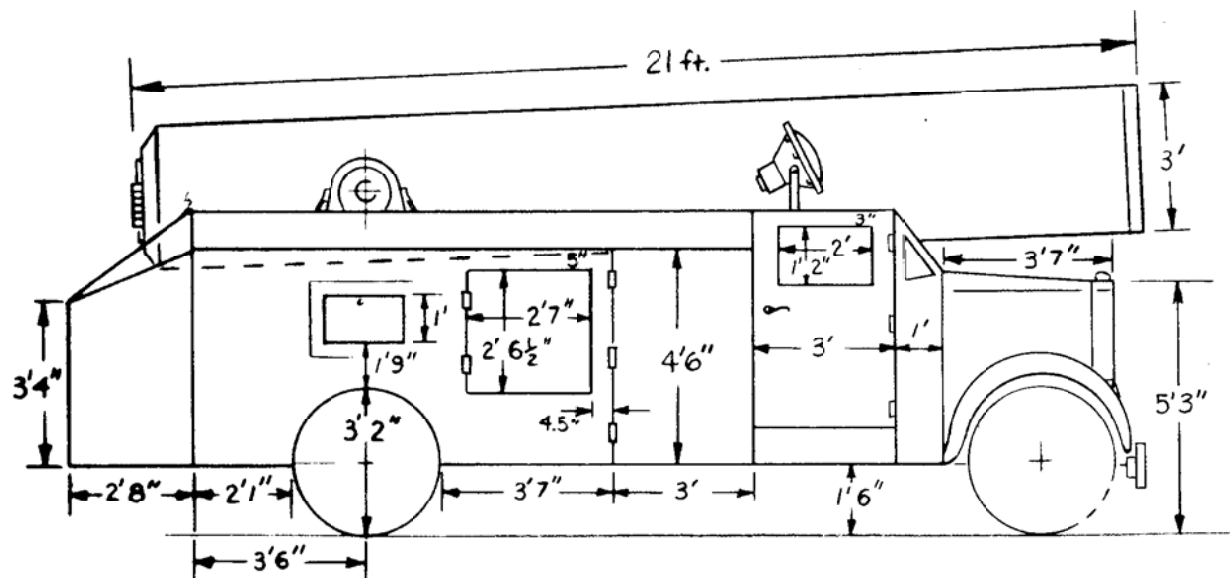
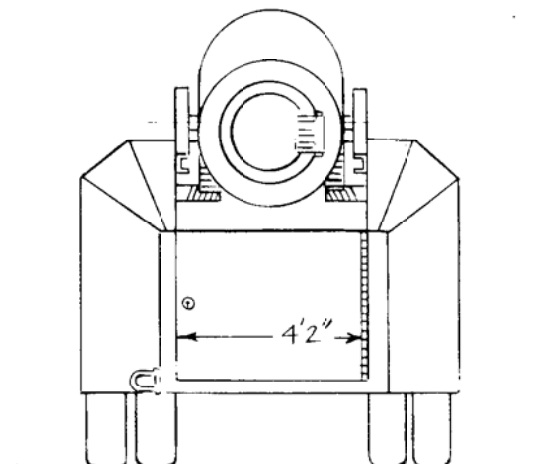
The letters on the sign boards are basically 10" high by 6" wide on the top row. 8" high by 6" wide on the middle and bottom row. The legs of the letters are 2" wide.

## The Zacchini Cannon

|               |                    |                                 |           |
|---------------|--------------------|---------------------------------|-----------|
| DATE: 1927/29 | SCALE: 1/4" & 3/8" | SCANNED & REVISED:<br>01/17/021 | Pg 1 of 7 |
|---------------|--------------------|---------------------------------|-----------|

## Circus Model Builders

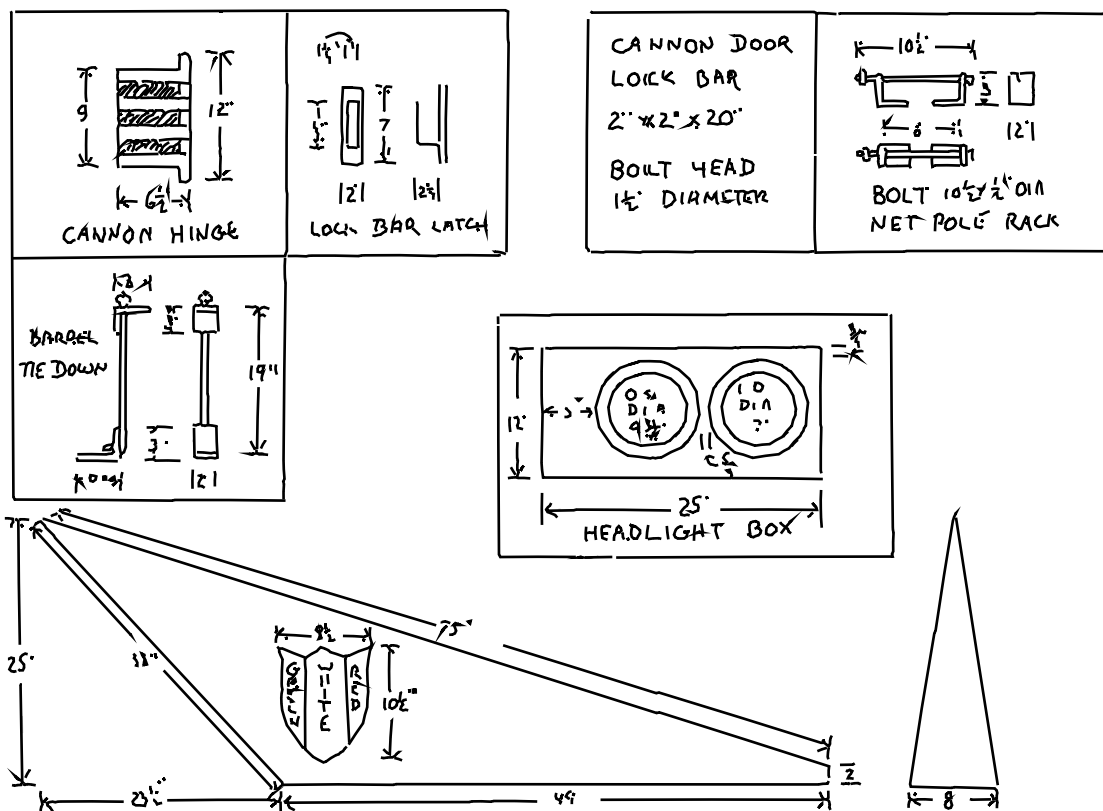
|  |                                |
|--|--------------------------------|
| Drawn By<br>Harold Barbour, Jr. & Don Oswald | DRAWING NUMBER<br><b>#0246</b> |
|--|--------------------------------|



© Copyright 2018 by Circus Model Builders, Inc.



FIGURE 5



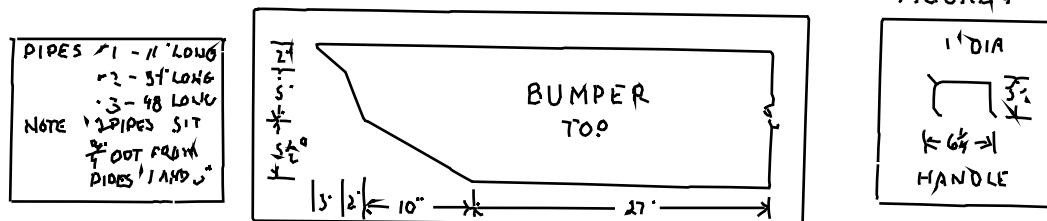
CAB DOOR 29" X 51 1/2"  
 WINDOWS 14" X 24"  
 TOP CORNERS 2" RAD.  
 MIRRORS 6" X 2" X 1/4"  
 MIRROR BRACES  
 UPPER 3/4" DIA. X 13"  
 LOWER 3/4" DIA. X 23"  
 VENT WINDOW  
 14" HIGH, 7" WIDE

BARREL LENGTH  
 MINUS PIPES AND  
 DUST COVER-21 1/4"  
 DIA. BACK- 44"  
 DIA. MOUTH-36 1/2"  
 PIPES 3" DIA  
 ALTERNATING  
 LENGTH 34" 48"  
 BOTTOM PIPES 16"

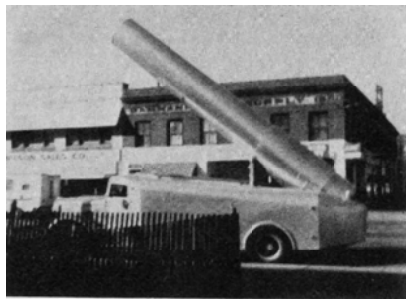
NOTE  
 LARGE TAIL LIGHTS  
 AND TRAILER HITCH  
 OMITTED AT MR.  
 ZACCHINI'S REQUEST

TIRES 40" DIA.  
 WHEEL OPENINGS  
 BACK BOTTOM-42"  
 FROM HINGE ON TOOL  
 BOX TO BUMPER-53 1/2"

FIGURE 4



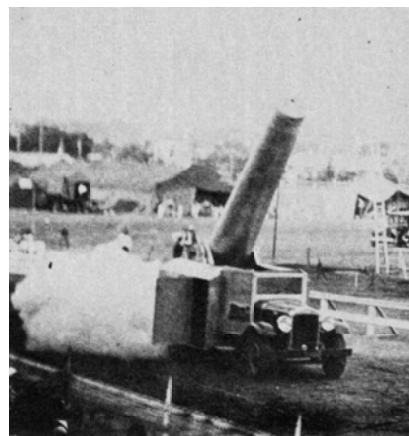
## The Zacchini Cannon



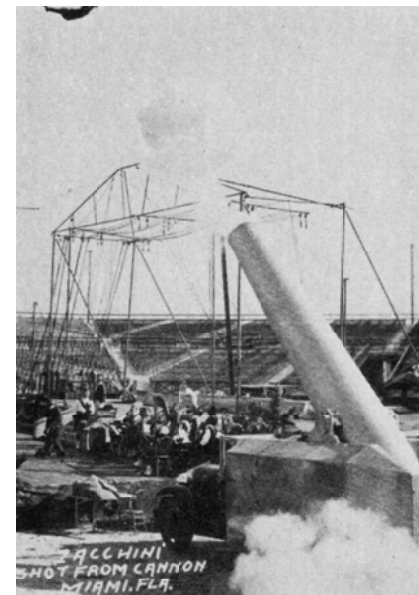
**Bantz Photo #6**



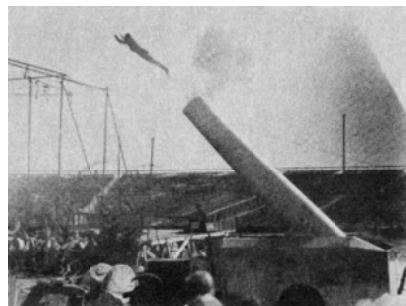
**Oswald Photo #4**



**Conover Photo #3**



**Conover Photo #2**



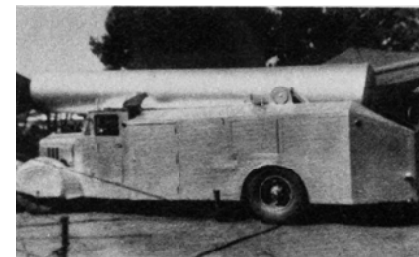
**Conover Photo #1**



**Oswald Photo #2**



**Oswald Photo #3**



**Tracy Photo #2**



**Oswald Photo #6**



**Tracy Photo #3**



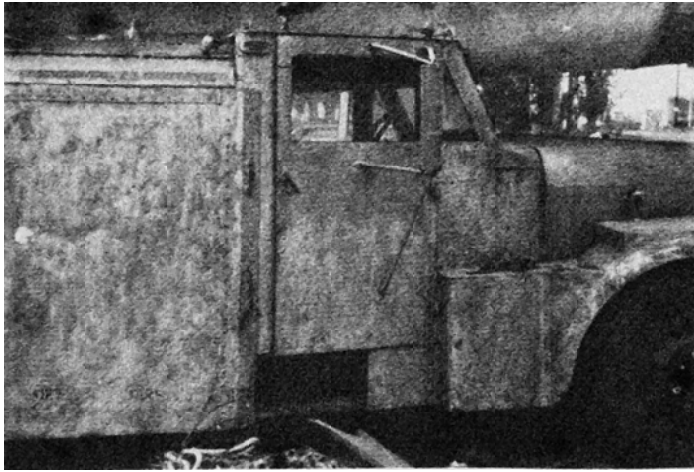
**Oswald Photo #5**

With the plan and comments, Don has also furnished 12 photos of various sections of the cannon in his comments.

Along with the two plans and photos we also have historical photos of the cannon in action. These photos were taken by R. R. Doubleday, a famous rodeo photographer.

## The Zacchini Cannon





Oswald Photo #7



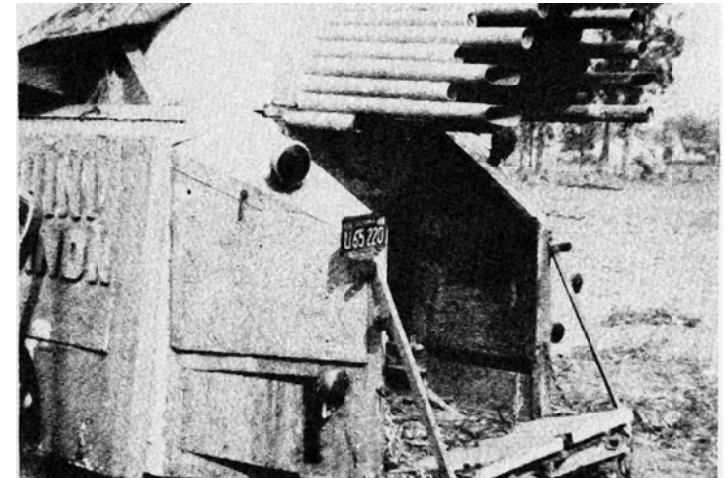
Oswald Photo #12



Oswald Photo #10

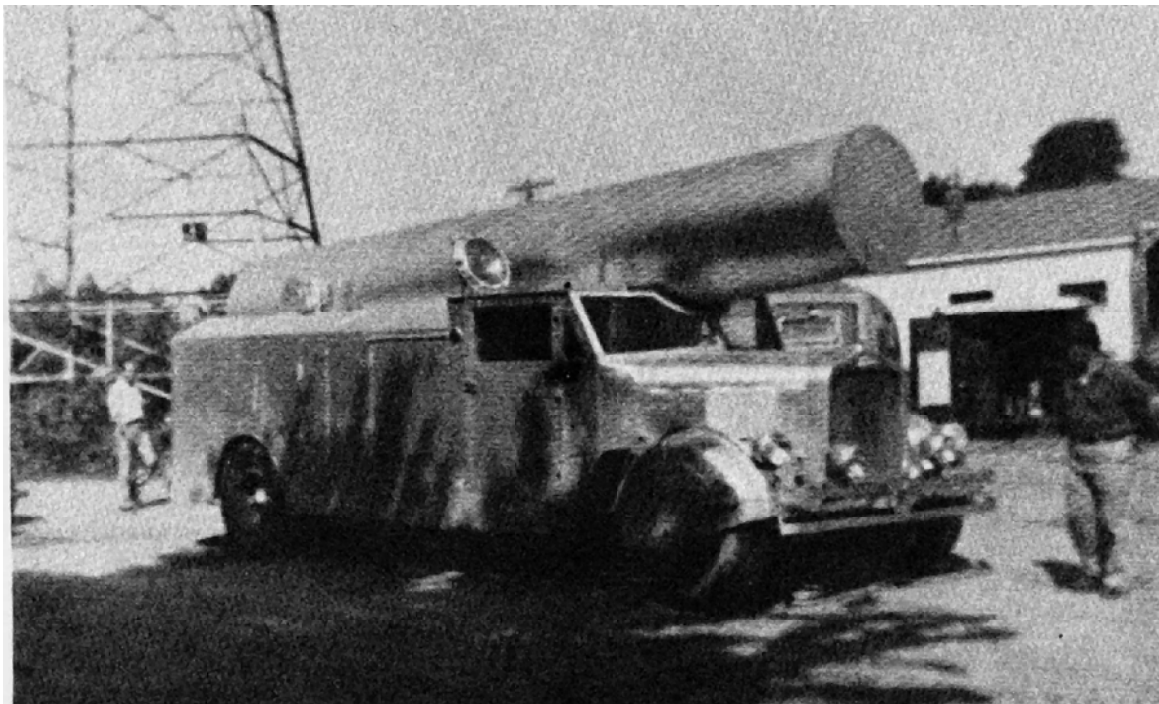


Oswald Photo #8

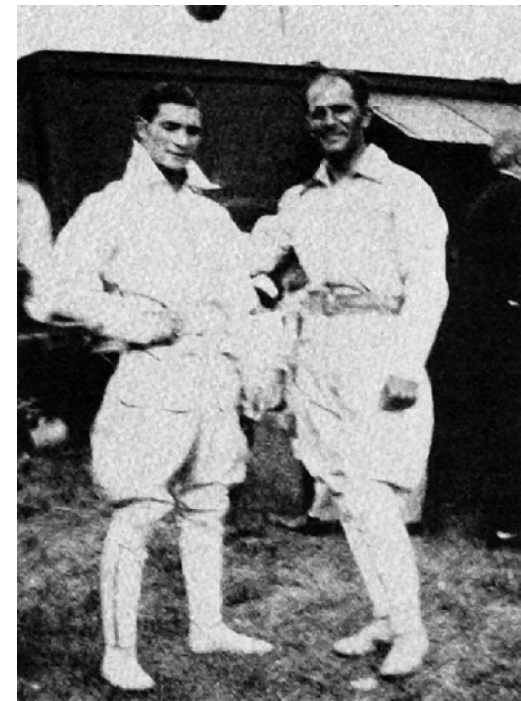


Oswald Photo #11

## The Zacchini Cannon



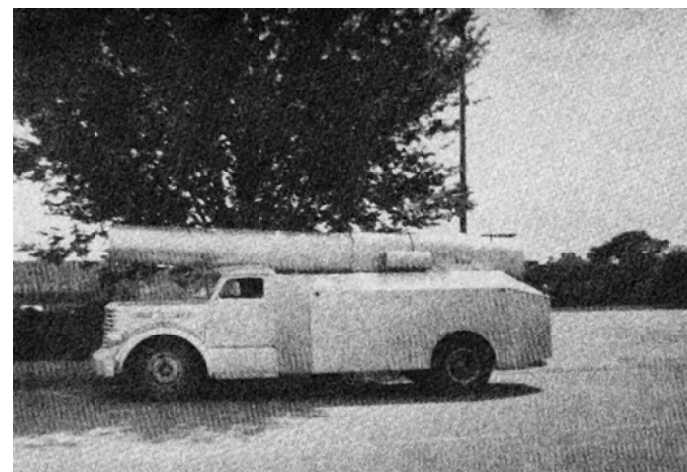
Tracy Photo #2



RBBB Aug 6, 1934. Hugo & Brother -  
Tracy Photo #4



Qswald Photo #9



Allen Bantz Photo #5

## The Zacchini Cannon