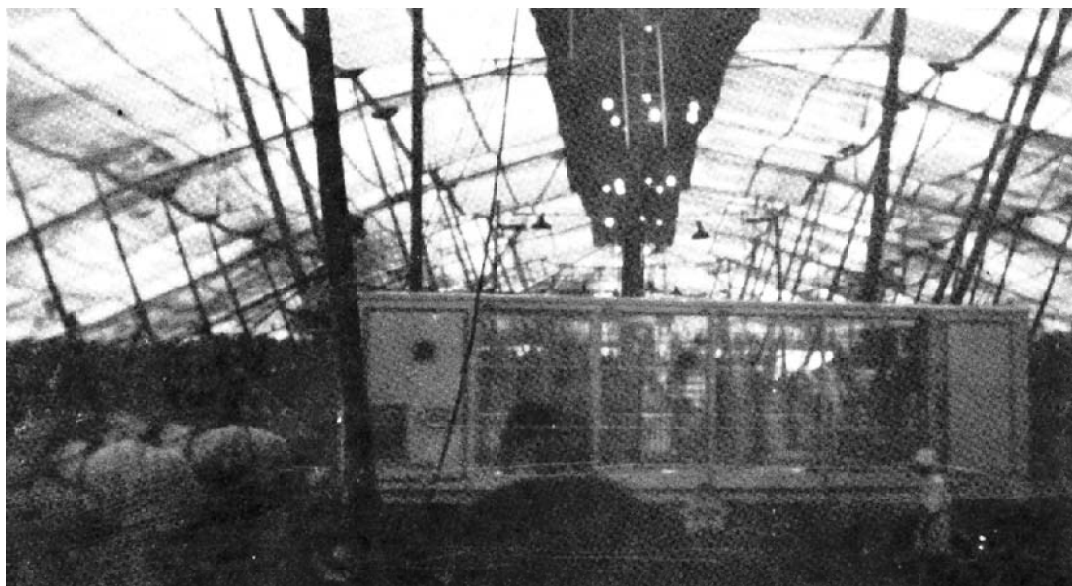




The air conditioned and glass enclosed cage of "Gargantua the Great."



RBBB "Gargantua" cage being drawn around the hippodrome track under the Big Top during the 1939 season. Gargantua can be seen in the front section of his air conditioned cage. [Photo from the Heist Collection]

Bob Robinson Relates:

In the late 1960's, Leo Kellar and I received special permission from McCormick Steele at Venice, Fla., to measure the wagon. We knew it had long ago been converted to a tractor-trailer type vehicle, but we had no idea of the other alterations I got so busy with the exterior details that I never got inside the vehicle. When we returned home, Leo and I both misplaced our sketches. They were not found until the pictorial views had been made.

Attempting to research the wagon, I was further confounded by conflicting and questionable information. A for-instance:

Bill Cooker provided me with photos and dimensions supplied by Lucky Allen. Lucky gives the overall dimensions as 26'-0" Lg. x 7'-3" wide x 6'-9" high. My careful measurements are 25'-2 1/2" Lg. x 8'-3 3/8" wide x 7'-1 1/8" high. Even the photos show the wagon as being wider than 7'-3", but that is the way I drew it. Lucky's dimensions may have come from a different model.

Since the pictorial views were made first, stick to the separate details. They are more nearly correct.

Much of the information shown could only be derived from a careful study of the photos, and to make comparison with known dimensions. Other details are the results of simple layouts, and the educated guess. Missing dimensions are left to the discretion of the builder.

Having so little real information, I seriously questioned my ability to come up with a set of plans that would meet the purist standards of some of our more illustrious builders. I had to build the wagon in 1/2" scale to aid me in my understanding of its many complexities.

Many thanks to The Ringling Brothers-Barnum & Bailey Circus Organization in Winterquarter, Leo Kellar, George Baney, Bill Cooker, Lucky Allen, and any others who contributed to the making of the Gargantua Cage plans.

Entire wagon is painted white, with gold stripes and scrolls edged in red. Silver roof.

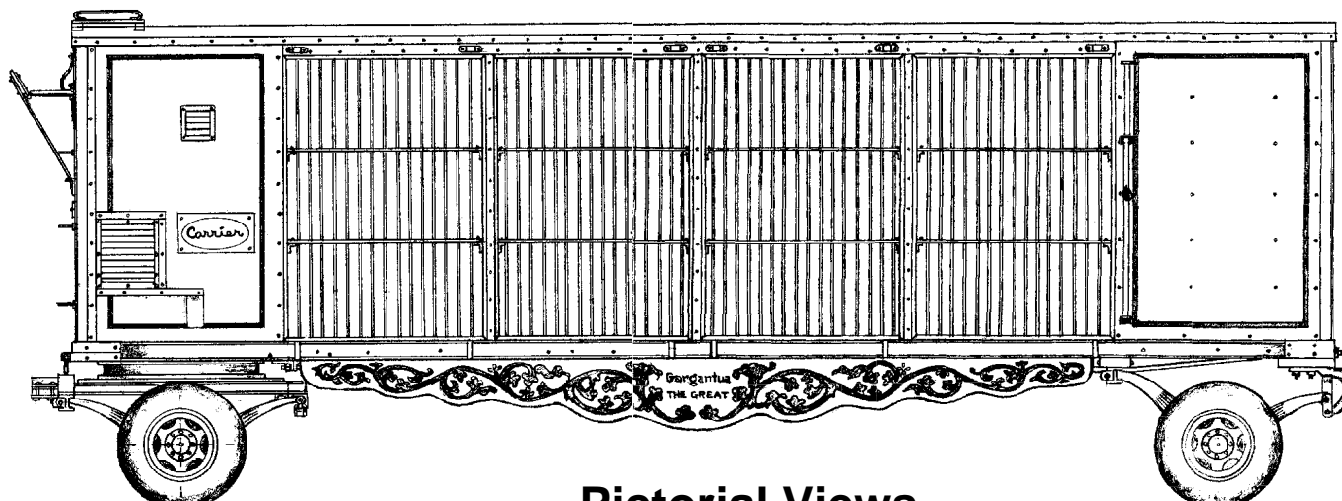
RBB&B

Gargantua Cage NO. 98

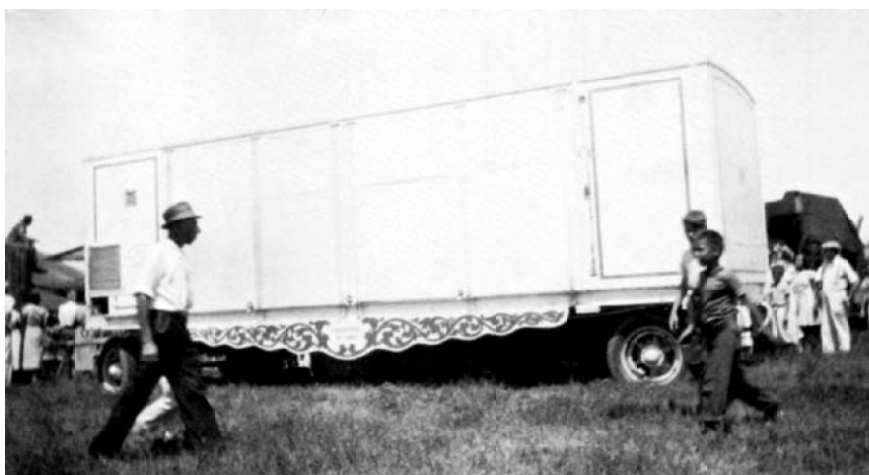
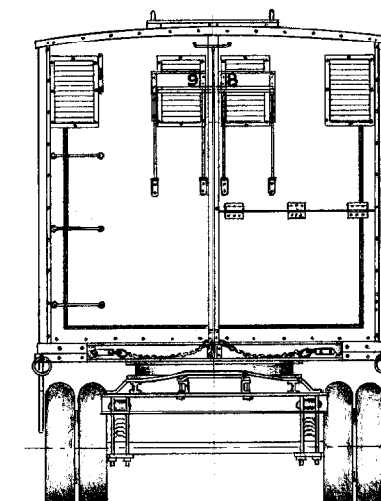
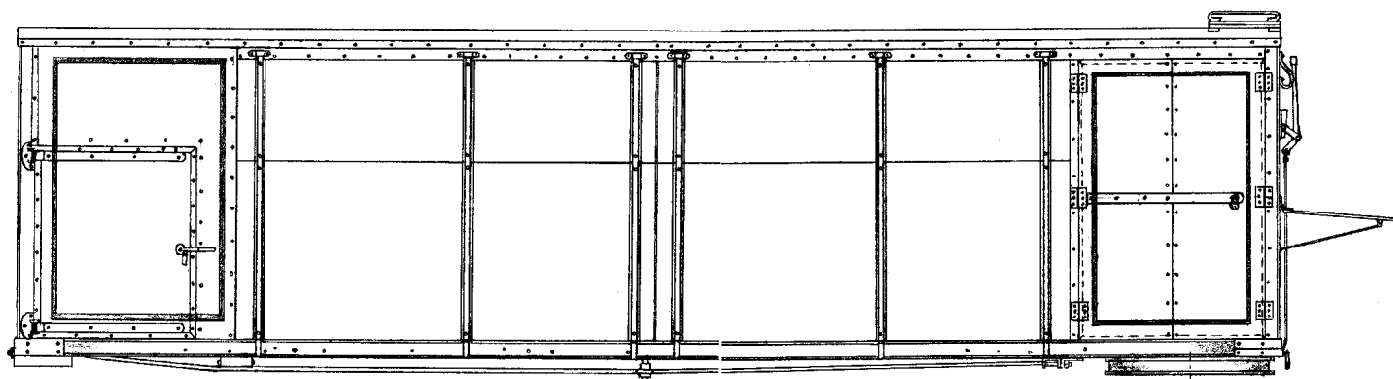
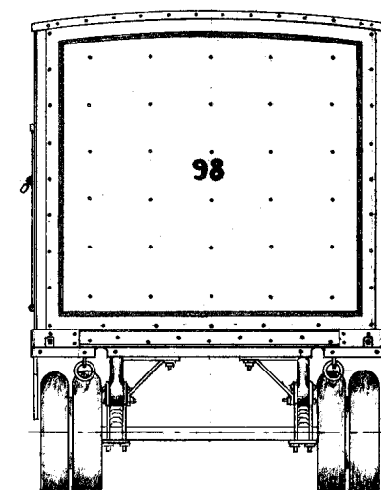
DATE: 1939	SCALE: 1/4" = 1'	SCANNED & REVISED: 01/15/03	Pg 1 of 6
------------	------------------	--------------------------------	-----------

Circus Model Builders

Drawn By Robert C. Robinson	DRAWING NUMBER #0219
--------------------------------	--------------------------------



Pictorial Views

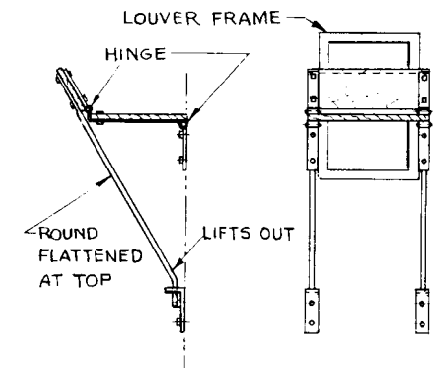


RBB&B
Gargantua Cage N0. 98

[illegible]

Technical drawing of a window unit with the following dimensions and features:

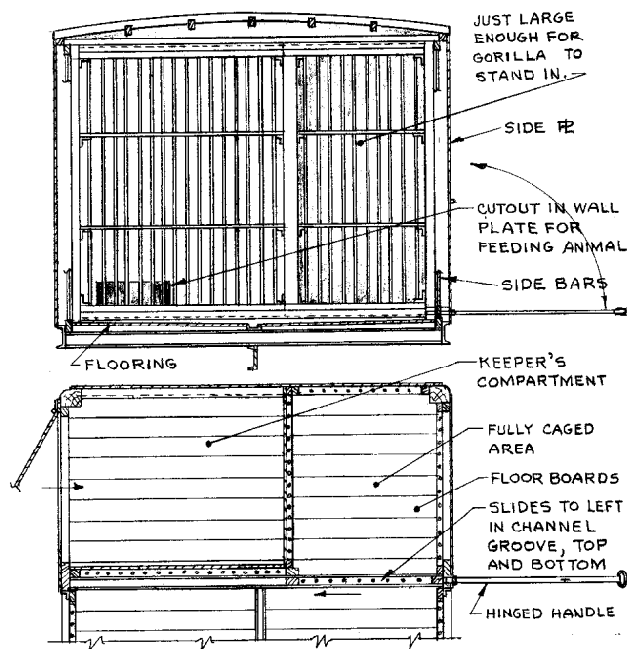
- Top Section:**
 - Three rectangular cutouts labeled "10" x 16" CUTOUTS".
 - Horizontal spacing between cutouts: 10" (between first and second), 10" (between second and third).
 - Horizontal distance from the left edge to the first cutout: 5".
 - Horizontal distance from the third cutout to the right edge: 10".
 - Horizontal distance from the right edge to the center of the third cutout: 6".
 - Top edge trim labeled "1" WIDE METAL TRIM FOR LOUVERS".
- Vertical Section:**
 - Left side height segments: 18" (top), 18" (middle), 8" (bottom).
 - Right side height segments: 16" (top), 22" (middle), 5" (bottom).
 - Overall right side height: $85\frac{1}{2}"$.
 - Internal horizontal dimension: 40" (width of the lower section).
 - Internal vertical dimension: 33" (height of the lower section).
- Base Section:**
 - Overall width: $99\frac{3}{8}"$.
 - Distance from left edge to the center of the base: 48".
 - Distance from the center of the base to the right edge: $12\frac{1}{2}"$.



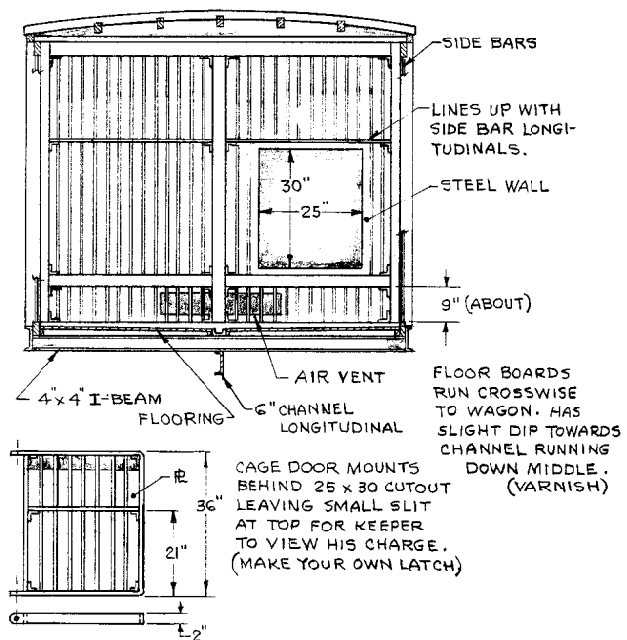
Pg 3 of 6

SCANNED & REVISED:
01/15/03

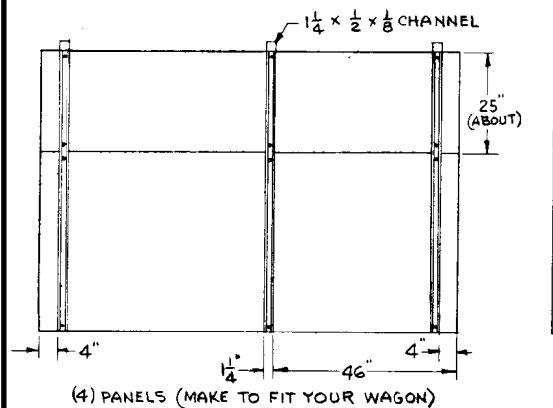
DRAWING NUMBER
#0219



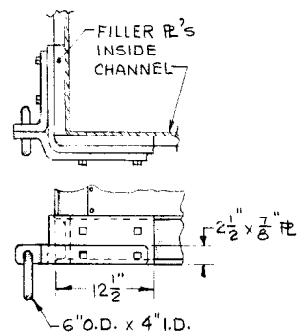
Rear Cage - Bar Partition Detail (1/4" = 1')



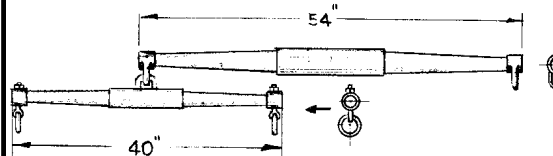
Front Cage - Bar Partition Detail (1/4" = 1')



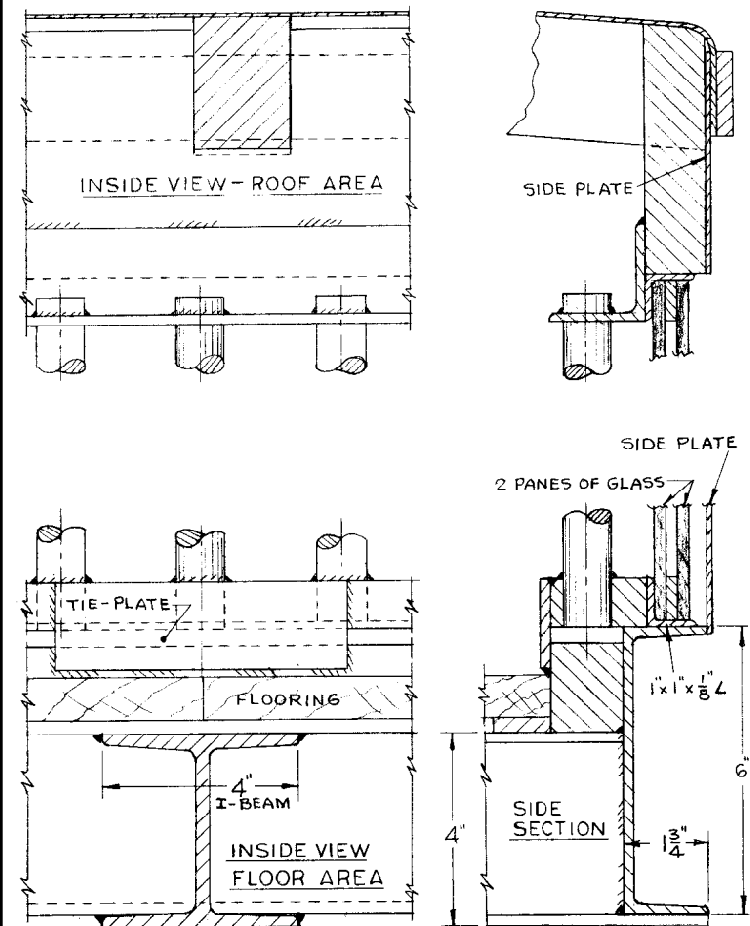
Side Panels (1/4" = 1')



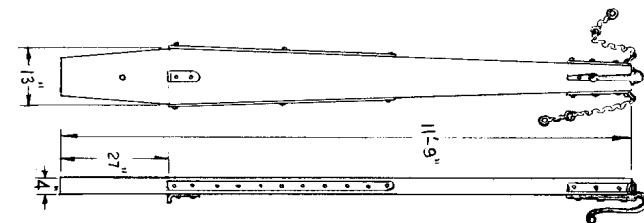
Mud Ring Detail (1/2" = 1')



Doubletree (Not to Scale)

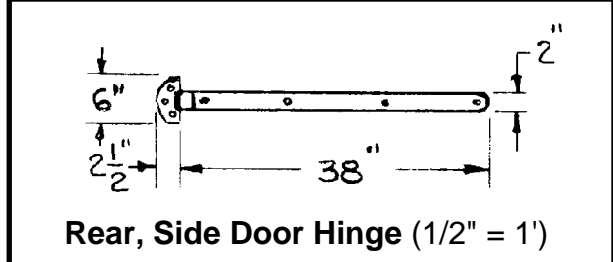
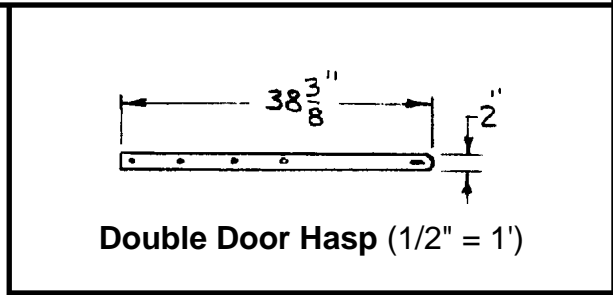
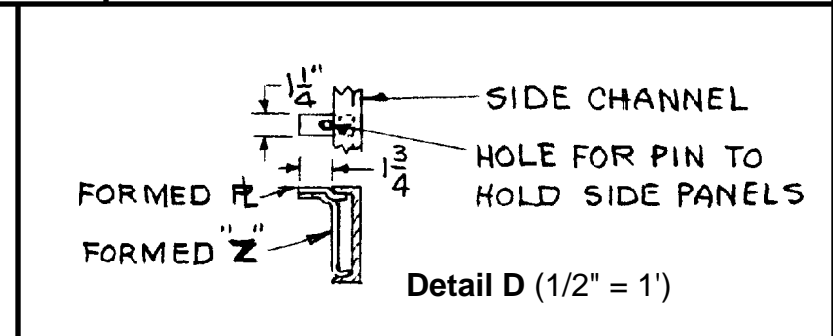
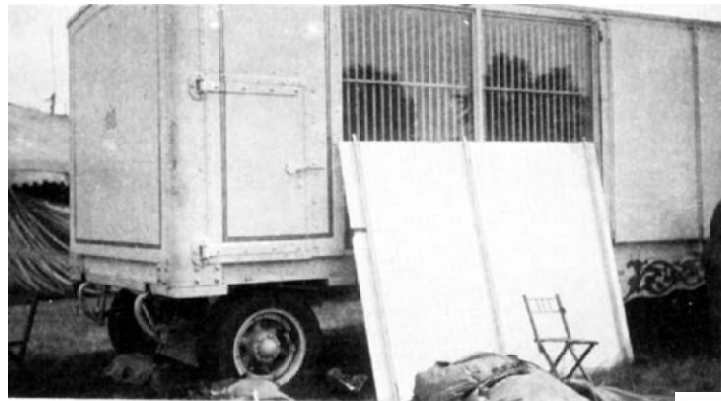
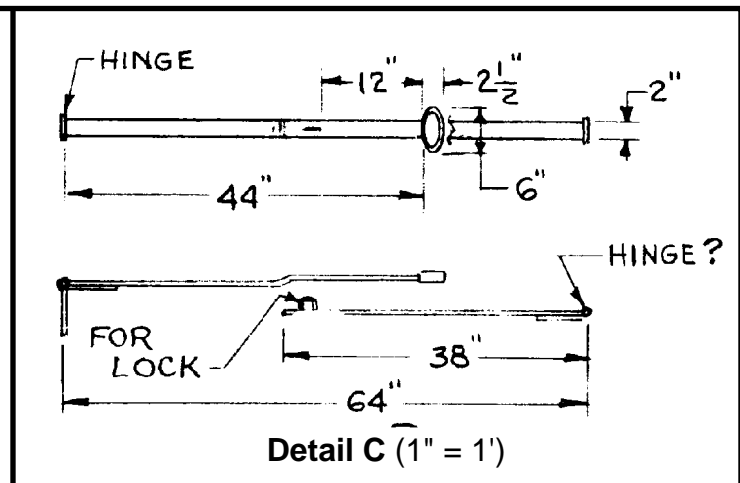
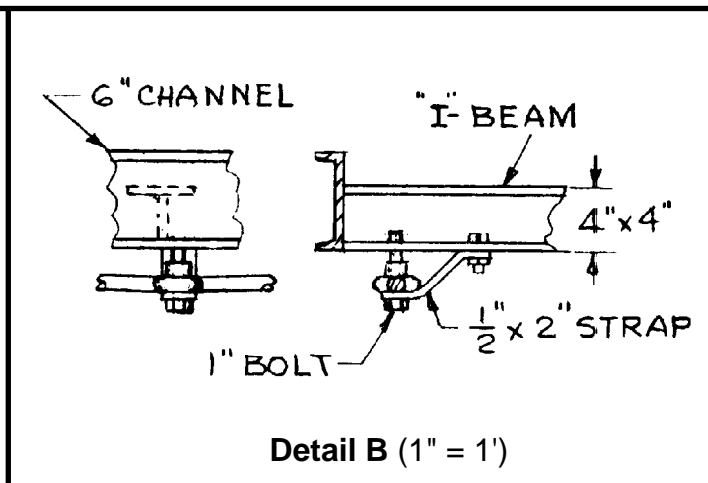
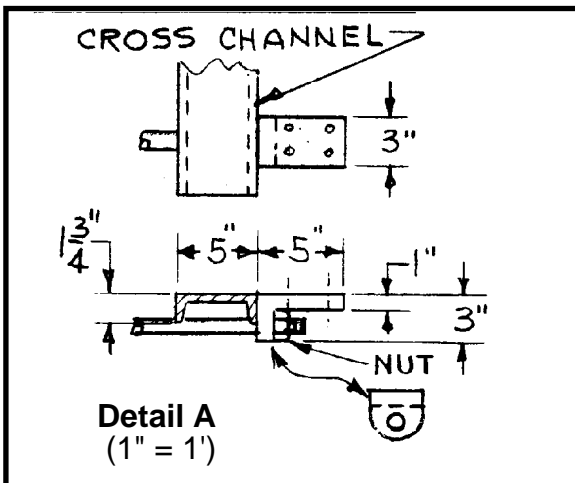


Construction Details (3" = 1')

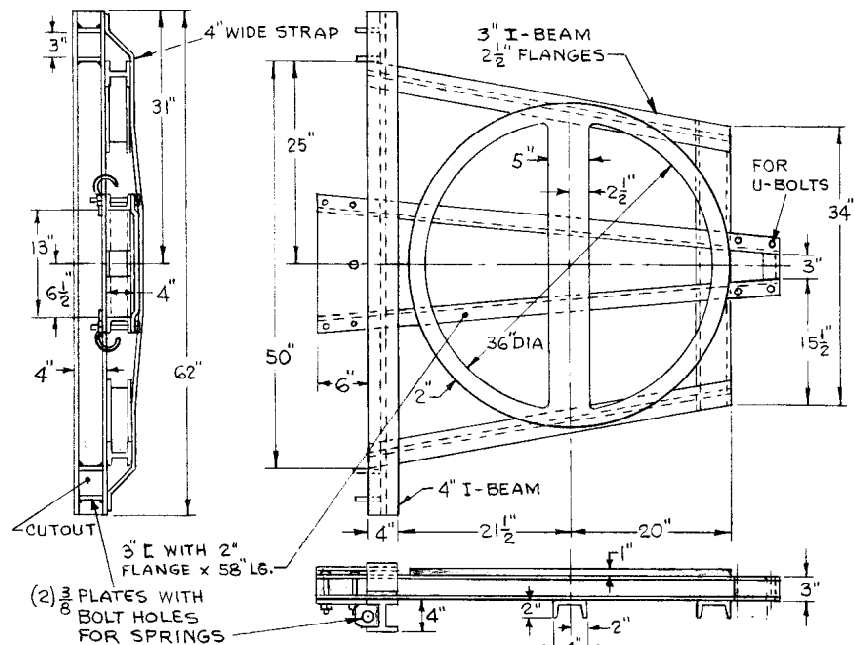


Wagon Tongue (1/4" = 1')

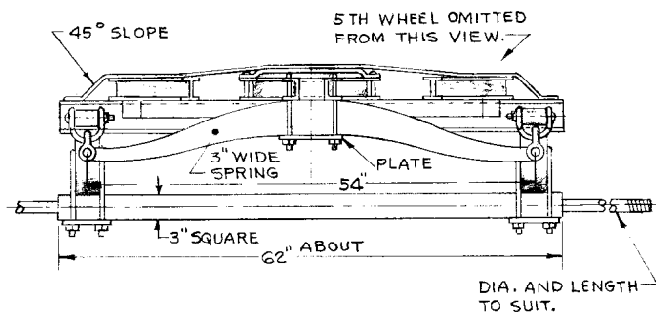
RBB&B
Gargantua Cage NO. 98



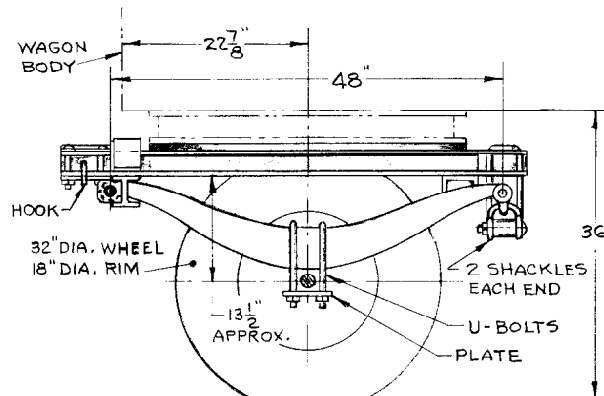
RBB&B			
Gargantua Cage N0. 98			
Pg 5 of 6	SCALE: 1/4" = 1'	SCANNED & REVISED: 01/15/03	DRAWING NUMBER #0219



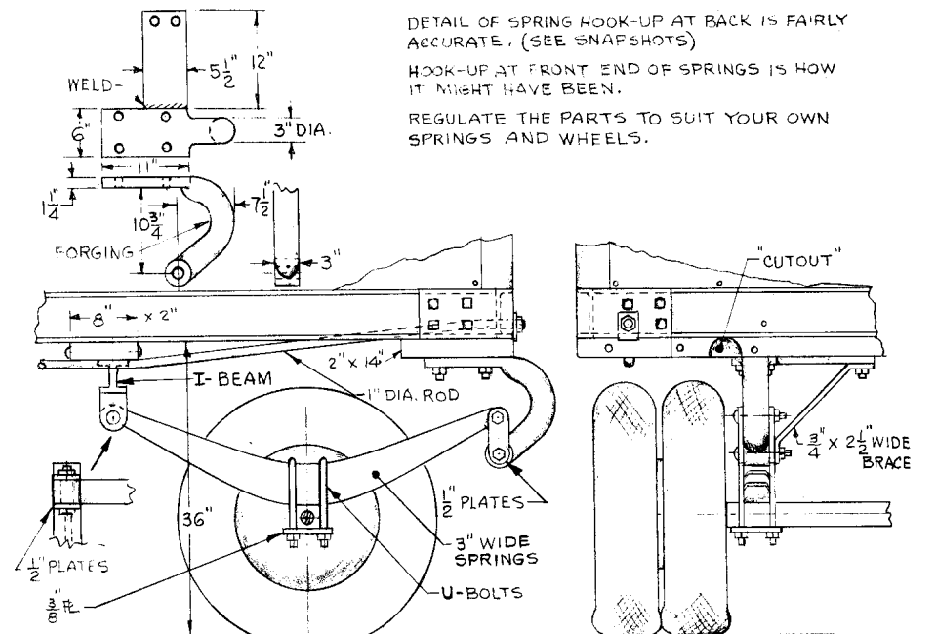
Front Undergear (1/2" = 1')



Front Undergear - Rear View (1/2" = 1')



Front Undergear (1/2" = 1')



Rear Undergear (1/2" = 1')



RBB&B
Gargantua Cage N0. 98

Pg 6 of 6

SCALE: 1/4" = 1'

SCANNED & REVISED:
01/15/03

DRAWING NUMBER
#0219