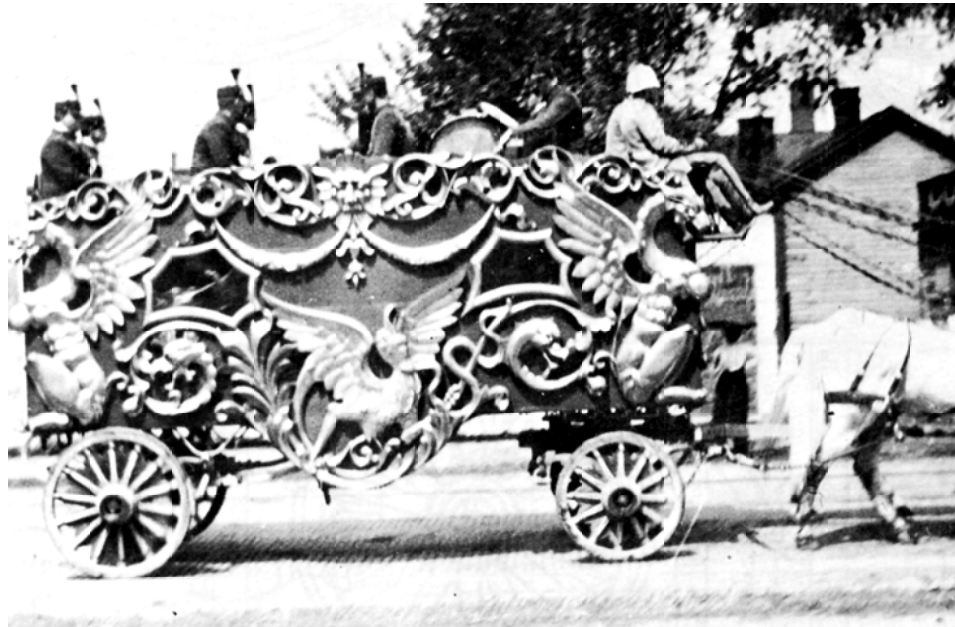


Ringling Brothers World's
Greatest Show No. 2
Bandwagon. [Photo from
the collection of the late
Richard Conover.]



This plan is one of the tableau baggage wagons built for Ringling Bros., by Moeller Bros., the winter of 1892-1893. There were quite a group of wagons built in this batch, but most of them were cages that had one solid side and one side that opened.

This wagon was 16 feet long with the body 6'3" wide and 6'3" high as shown on page 4.

These drawings are made in half-inch scale.

On page 2 is the general layout of the sides showing the carving detail and, as was the case on several wagons of that era, there were two mirrors on each side.

You will note the detail of the front and rear wheels. The front wheel was 3 feet with 12 spokes and the rear wheel was 3 feet 9 inches with 14 spokes. These wheels had wooden hubs 12 inches through and the wheels had 5 inch tires.

The front elevation is shown on page 3 and also the front undergear with dimensions. Rear elevation gives details of rear doors, spring hangers, and axle.

On page 4 the general undergear detail is shown with dimensions. It gives brake rigging and spring arrangement with hangers.

Also shown on page 4 are details of forward rear spring hanger and rear gooseneck spring-hanger and foot brake level.

EDITOR'S NOTE - Prior to his death, Richard E. Conover presented the following information on this Ringling Bros. Wagon. There are some slight differences in the information of Mr. Conover and Mr. Lockier, in dates, name and builders. Your LCW Editor feels both are basically correct and if all the facts could be, learned the gap of information would be closed. In the interest of recording all the facts available we feel it best to print both articles in hope history can be corrected.

RINGLING BROTHERS WORLD'S GREATEST SHOWS NO. 2 BANDWAGON

By: the late Richard Conover, Xenia, Ohio

This was the No. 2 Bandwagon on the Ringling Show from the early 1890's until about 1905 when the Swan Bandwagon was brought on. During this time the Lion & Mirror was their No. 1 Bandwagon. With the arrival of the Swan, the Lion & Mirror became No. 2 and this one disappeared over the horizon.

A couple of years ago, I thought I might be able to account for its demise in 1902 when some pictures arrived showing it in collision with the Waxahatche, Texas, fire engine. Further perusal of this lead turned up an eye witness to the incident who related that the bandwagon suffered almost no damage while the city had to buy a new wheel for their pumper. Anyway, that 1902 picture is the last bit of information that I have on it.

Its builder is not definitely known but the wheels and rear gears look very much like those the Moeller Brothers, of Baraboo, put on the series of tableau-dens they were built for the Ringlings about this same time. See "The Ringling Cages of 1893," by Richard E. Conover and Stuart Thayer, The Bandwagon, May-June 1969.

Ringling Bros. Tableau Baggage Wagon

DATE: 1893

SCALE: 1/2" = 1'

SCANNED & REVISED:
04/19/2005

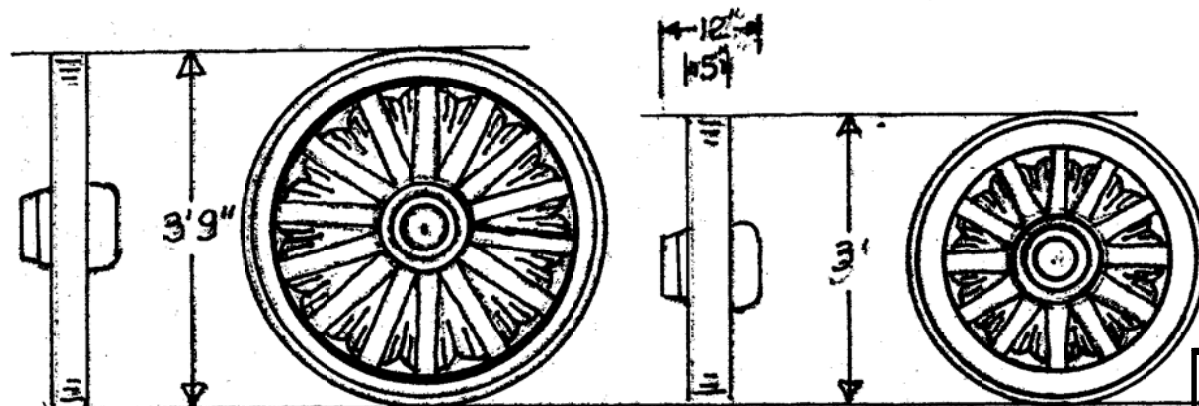
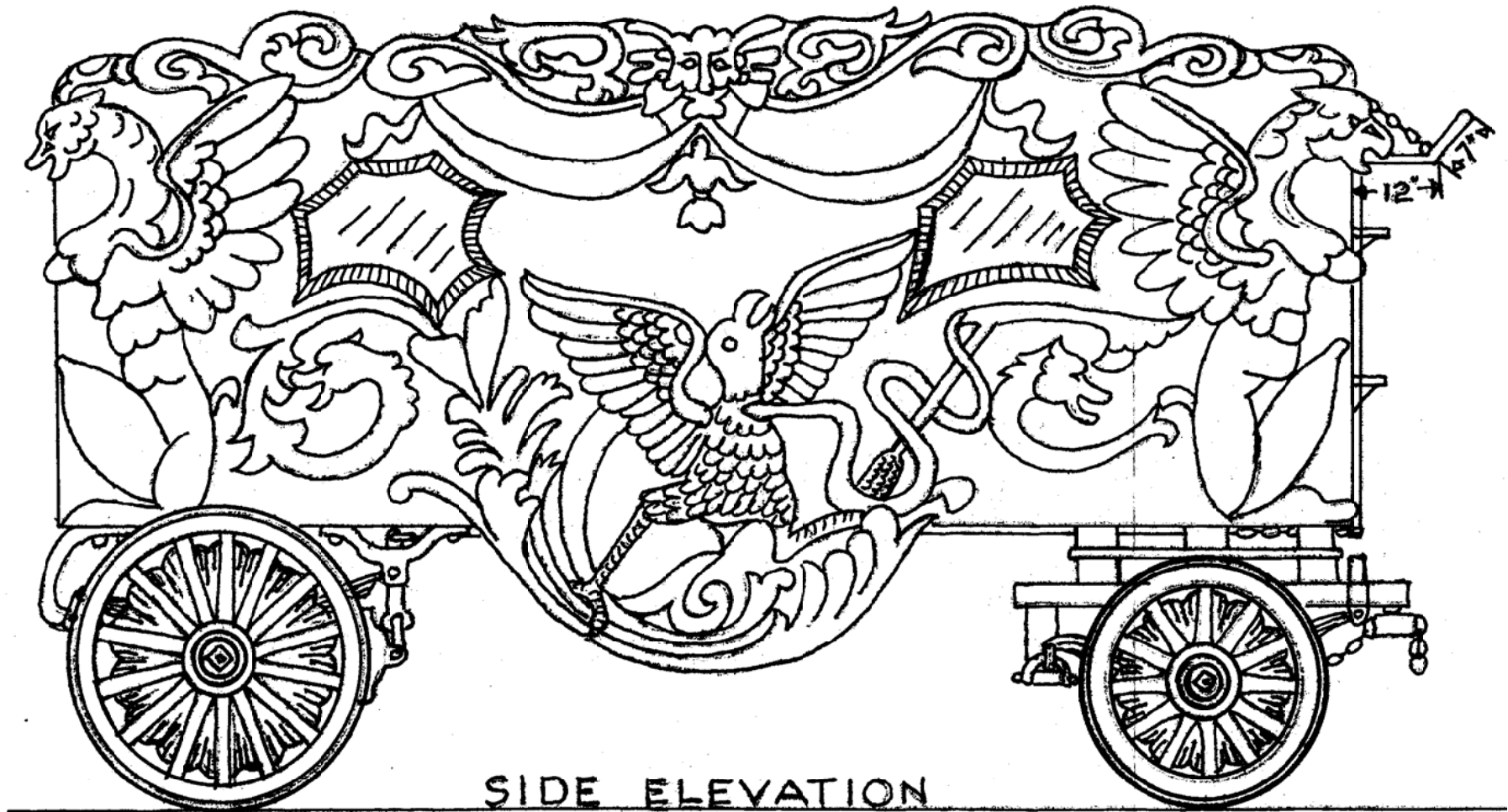
Pg 1 of 4

Circus Model Builders

Drawn By
Charlie Lockier

DRAWING NUMBER

#0215



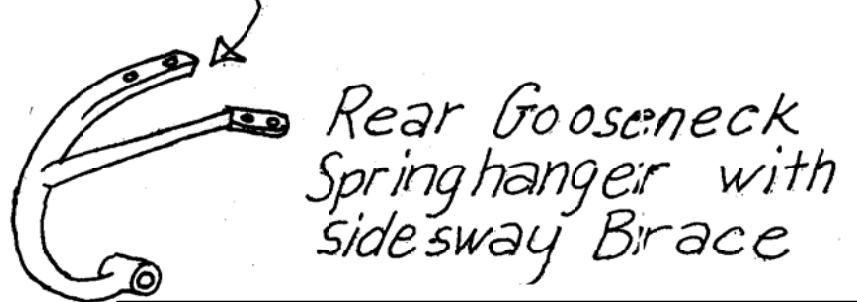
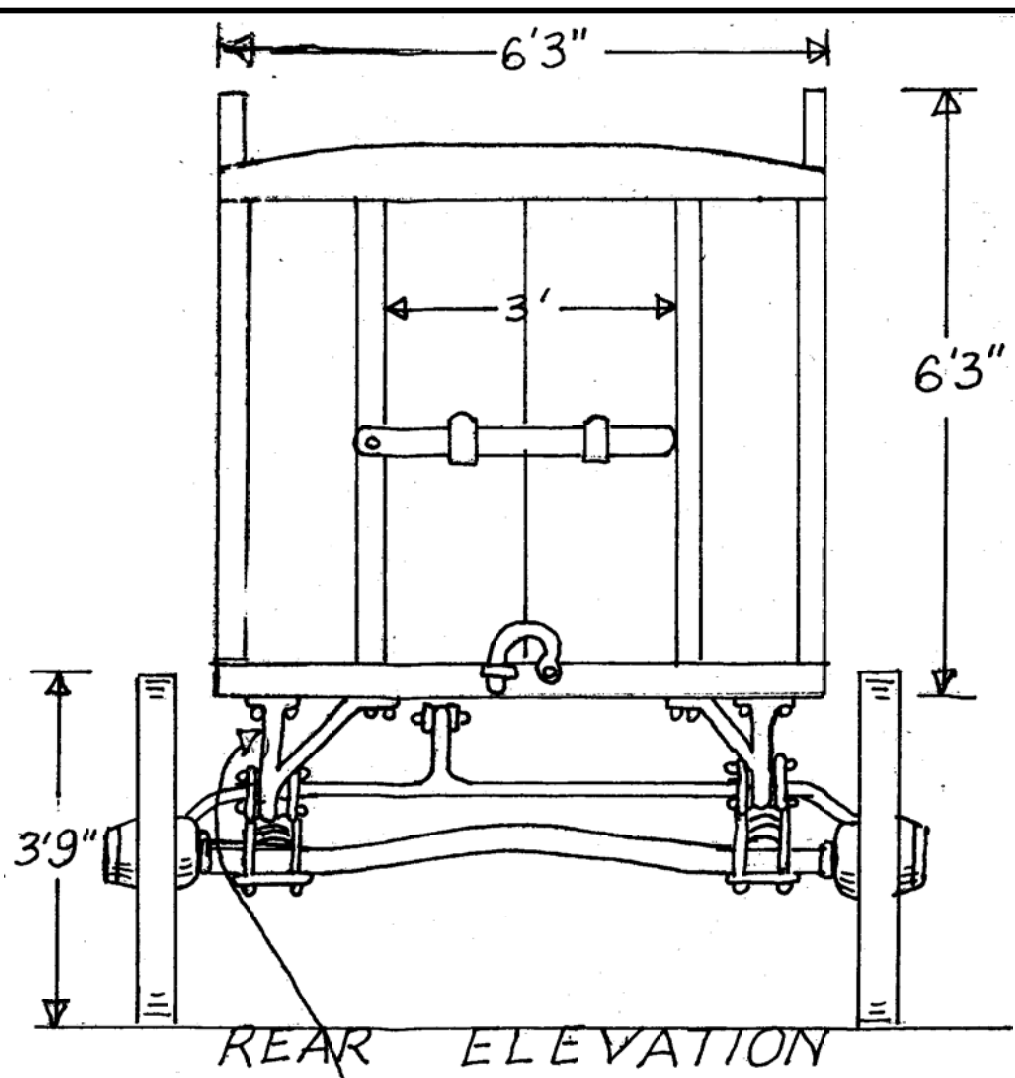
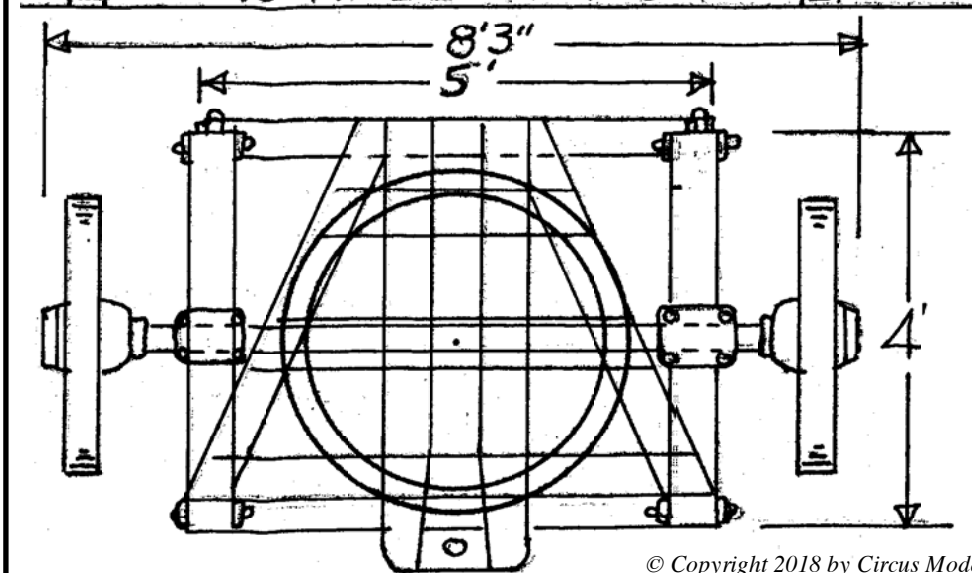
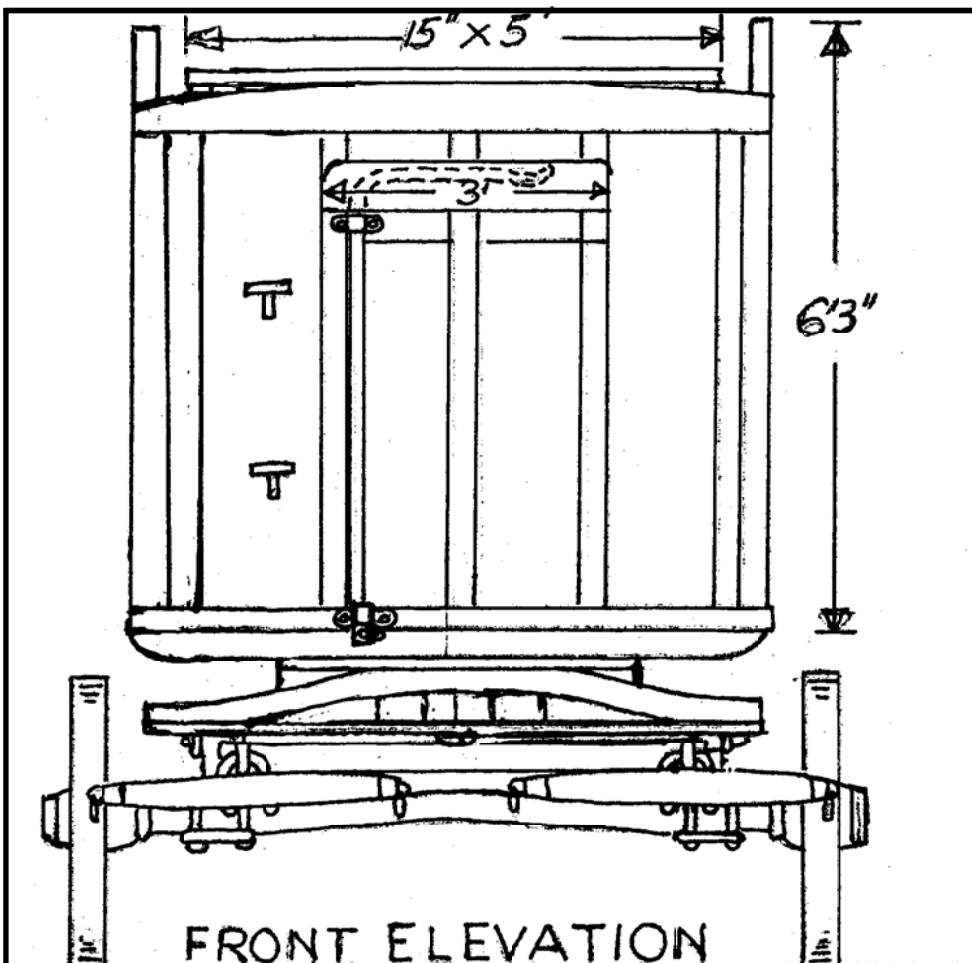
**Ringling Bros.
Tableau Baggage Wagon**

Pg 2 of 4

SCALE: 1/2" = 1'

SCANNED & REVISED:
04/19/2005

DRAWING NUMBER
#0215



**Ringling Bros.
Tableau Baggage Wagon**

