

Little information is available on this wagon which is now located at the Circus World Museum. However, plans have been produced from the actual wagon. Should further background material become available at a later date, we will bring it to you.

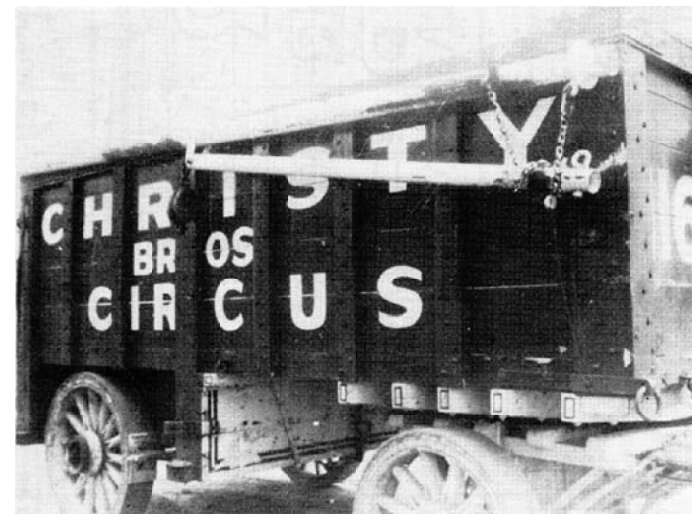
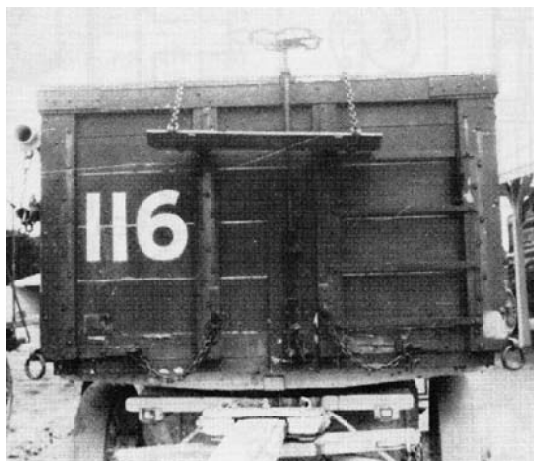
Full credit for the dimensions and preliminary sketches from which these drawings were made must go to Edward E. Grimminger, Altoona, Pa. Having thoroughly covered his subject, he was able to furnish me with an unusual amount of detail through close correspondence.

Some of the finer detail can only be found in snapshots. These were taken and furnished me by John D. Martin, Martinsburg, WV, of your CMB Photo Department. So you might say that the three of us combined our energies and talents to produce the set of drawings.

The iron "grill" that is attached to the bottom (drop) was overlooked until the drawings were completed. A couple of drawings were corrected to include this detail. Ed wrote that the 4 x 4 over the rear axle, and the brake brace board, are fastened to the grill work. I assume this is what he meant, otherwise the 4 x 4 would have to be a part of the grill work. They were bolted on, but just how I am not sure.

The inside of the rear door was apparently backed up by iron slats to take the rivets. Ed says the wagon is of heavy construction.

I made every effort to show the exact number and placement of every rivet or fastening that could be seen in the snapshots. I did not show fastenings that I could not be sure of, so their omission does not mean none are there. It is just impossible to gather every detail.



[Photos from the John D. Martin Collection unless otherwise noted]



Wagon No. 116 at the Circus World Museum showing the canvas loading derrick in the traveling position [Circus World Museum photo]

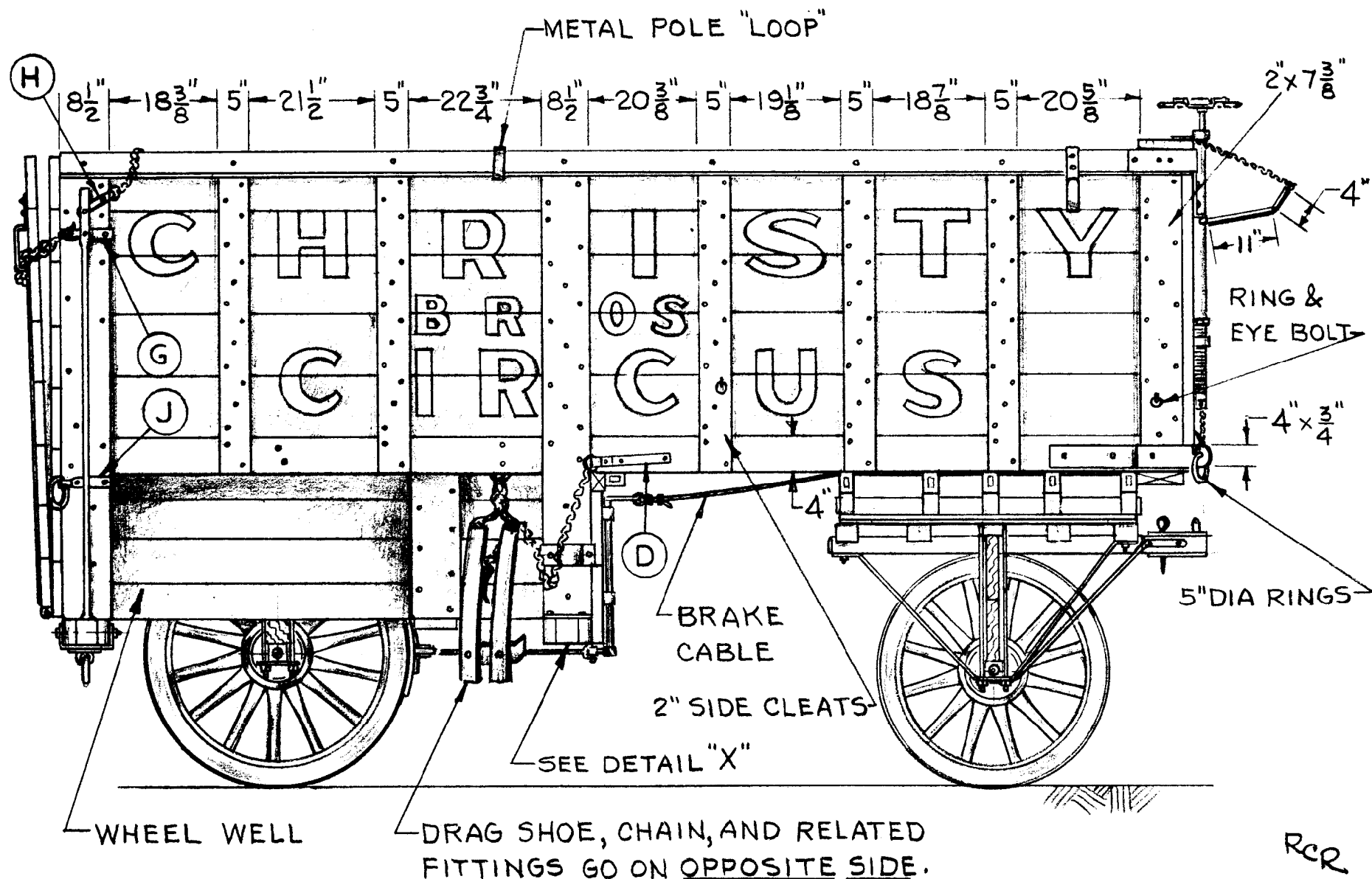
Christy Bros. Circus Canvas Wagon and Loader No. 116

DATE: 1920s	SCALE: 1/2" = 1'	SCANNED & REVISED: 03/19/03	Pg 1 of 8
-------------	------------------	--------------------------------	-----------

Circus Model Builders

Drawn By
Robert C. Robinson, CMB 942

DRAWING NUMBER
#0195



WHEELS SHOWN
ON OPPOSITE SIDE ONLY.

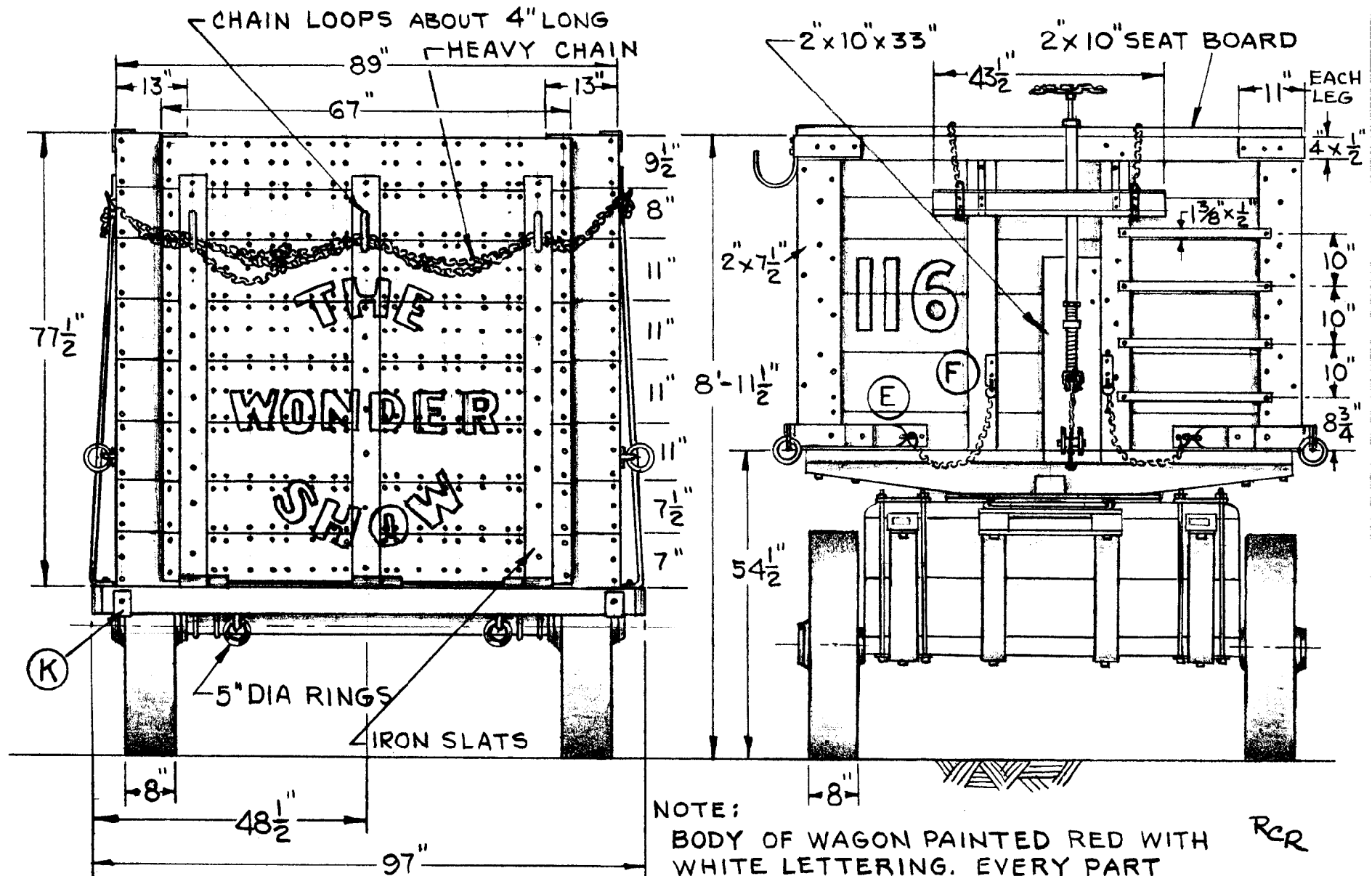
**Christy Bros. Circus
Canvas Wagon and Loader No. 116**

Pg 2 of 8

SCALE: 1/2" = 1'

SCANNED & REVISED:
03/19/03

DRAWING NUMBER
#0195



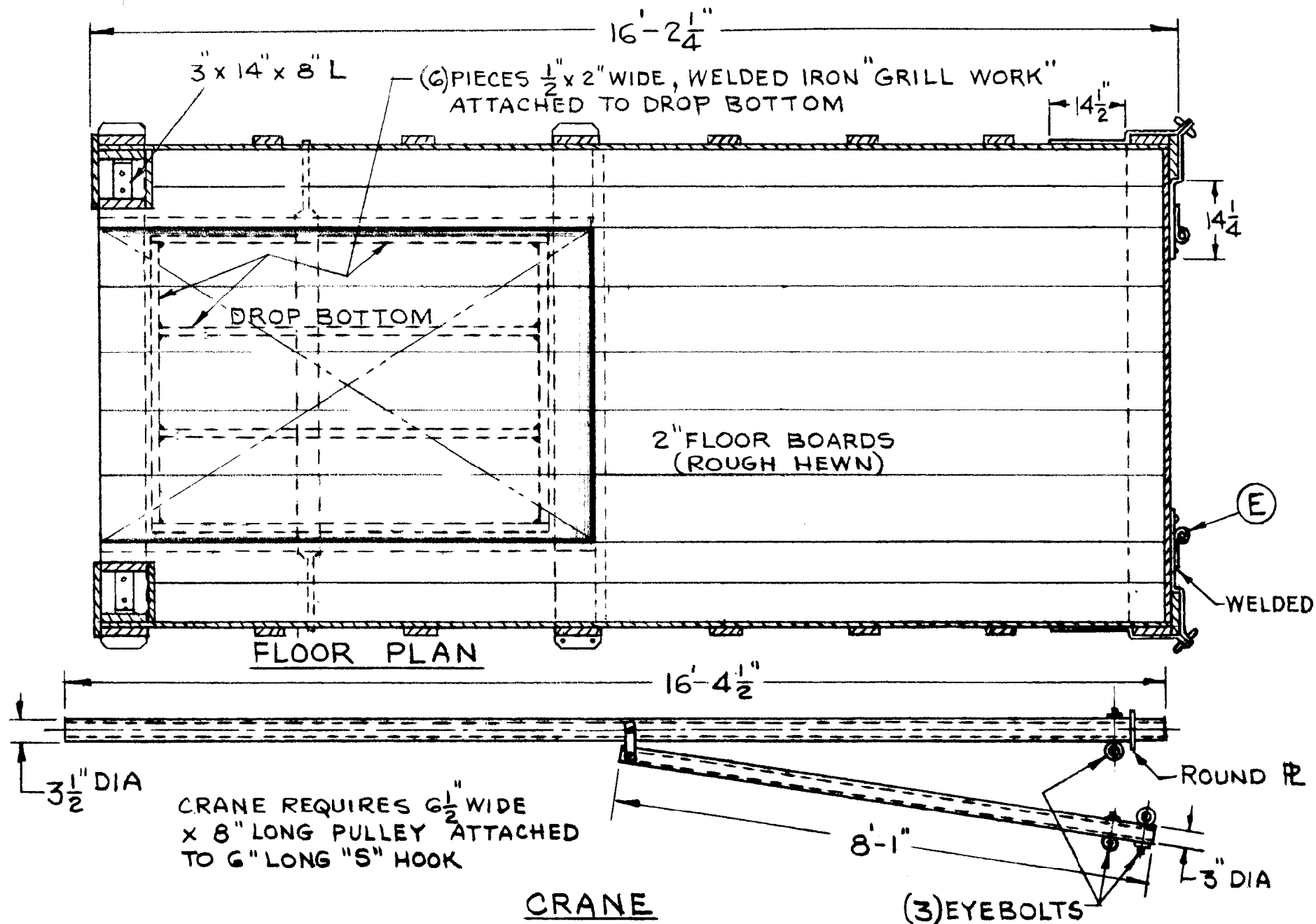
Christy Bros. Circus
Canvas Wagon and Loader No. 116

Pg 3 of 8

SCALE: 1/2" = 1'

SCANNED & REVISED:
03/19/03

DRAWING NUMBER
#0195



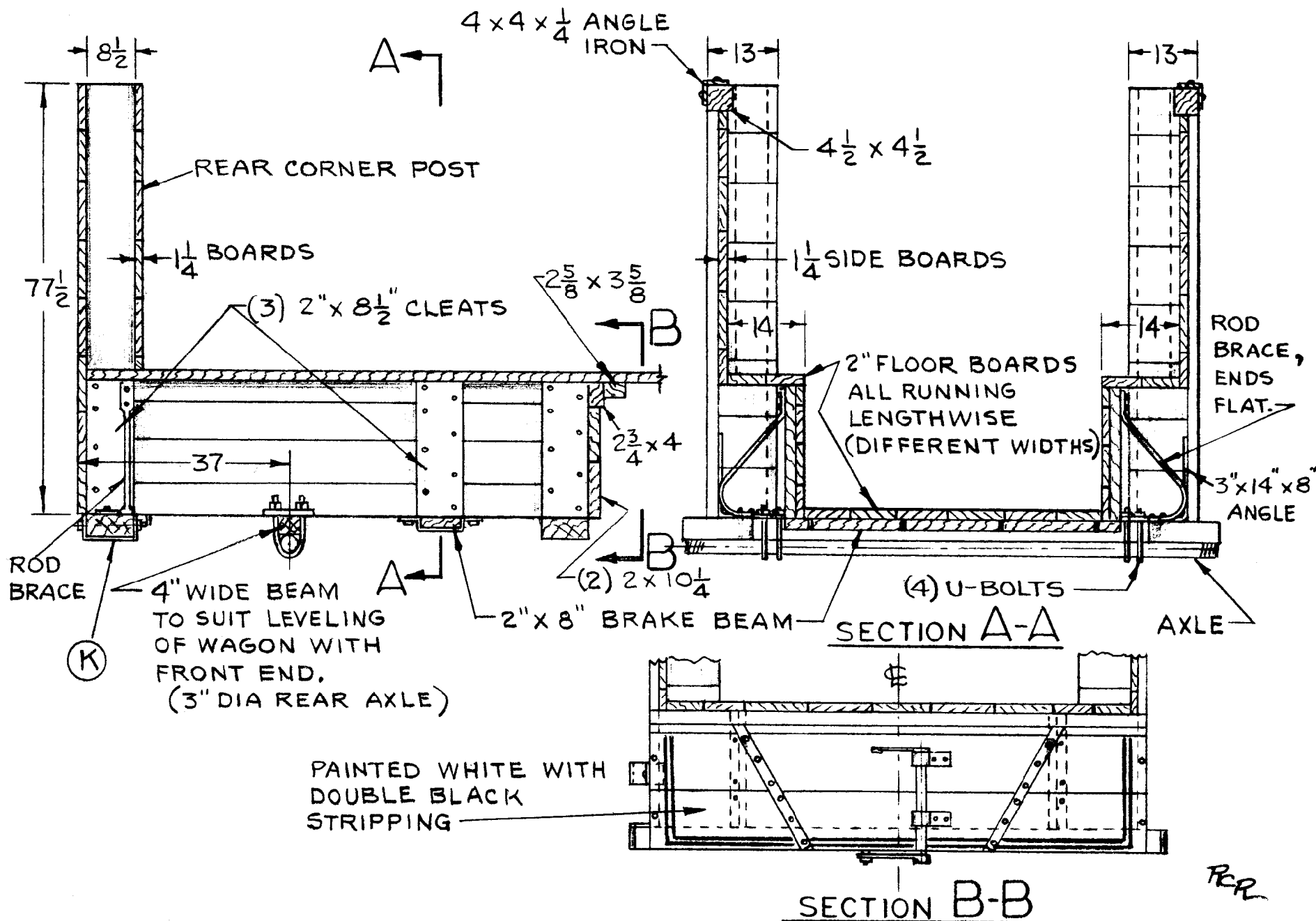
Christy Bros. Circus
Canvas Wagon and Loader No. 116

Pg 4 of 8

SCALE: 1/2" = 1'

SCANNED & REVISED:
03/19/03

DRAWING NUMBER
#0195



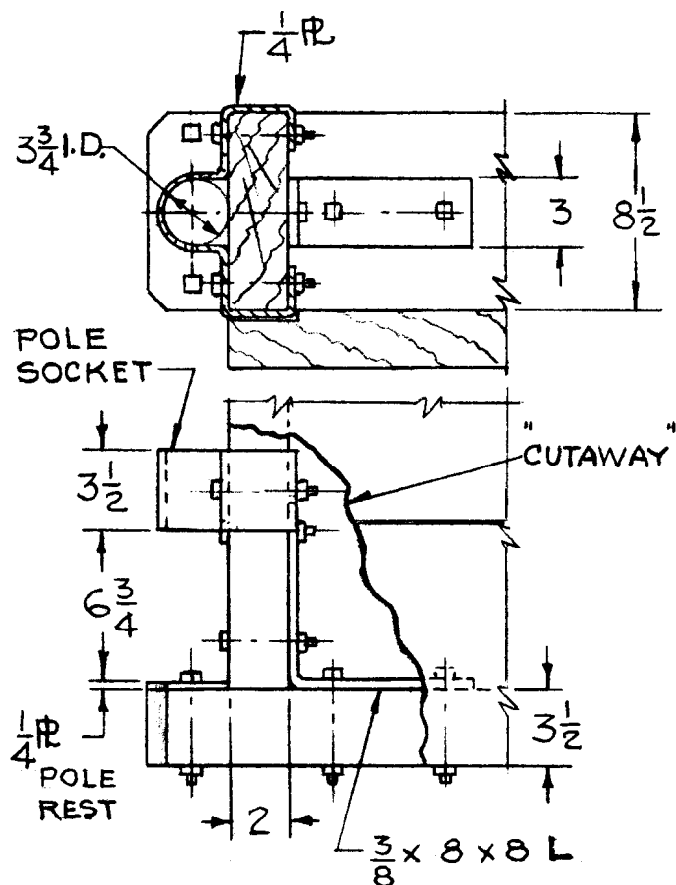
Christy Bros. Circus
Canvas Wagon and Loader No. 116

Pg 5 of 8

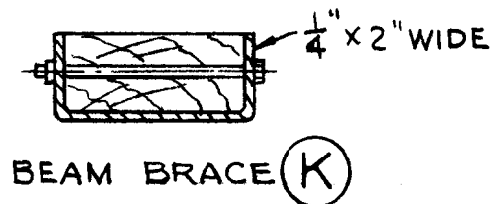
SCALE: 1/2" = 1'

SCANNED & REVISED:
03/19/03

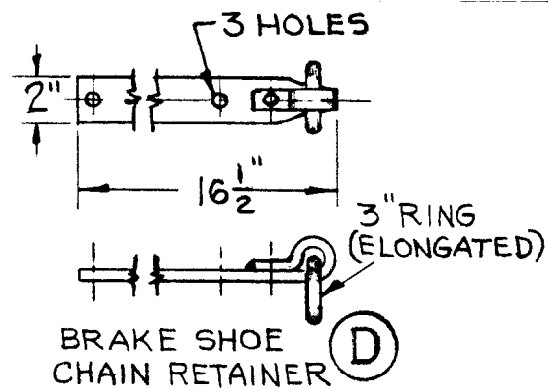
DRAWING NUMBER
#0195



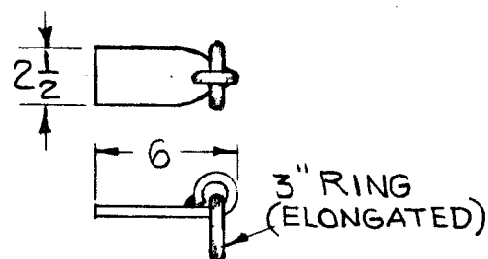
DETAIL "X"
(ENLARGED SCALE)



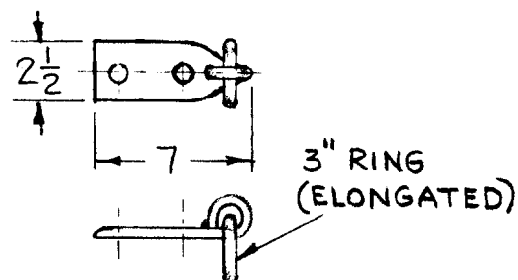
BEAM BRACE (K)



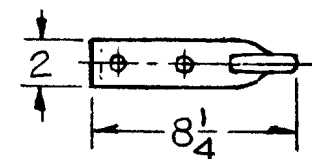
**BRAKE SHOE
CHAIN RETAINER (D)**



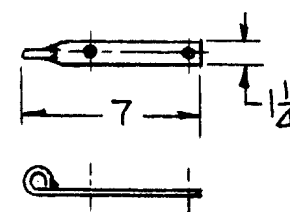
**SAFETY CHAIN
RETAINER (E)**



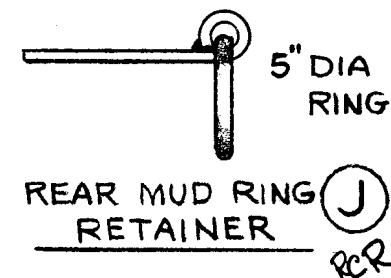
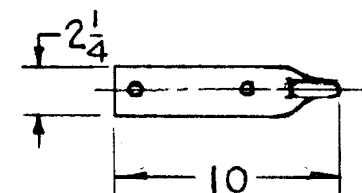
**SAFETY CHAIN
RETAINER (F)**



**DOOR CHAIN
BRACKET (G)**



**LASHING CHAIN
RETAINER (H)**



**REAR MUD RING
RETAINER (J)**
RCR

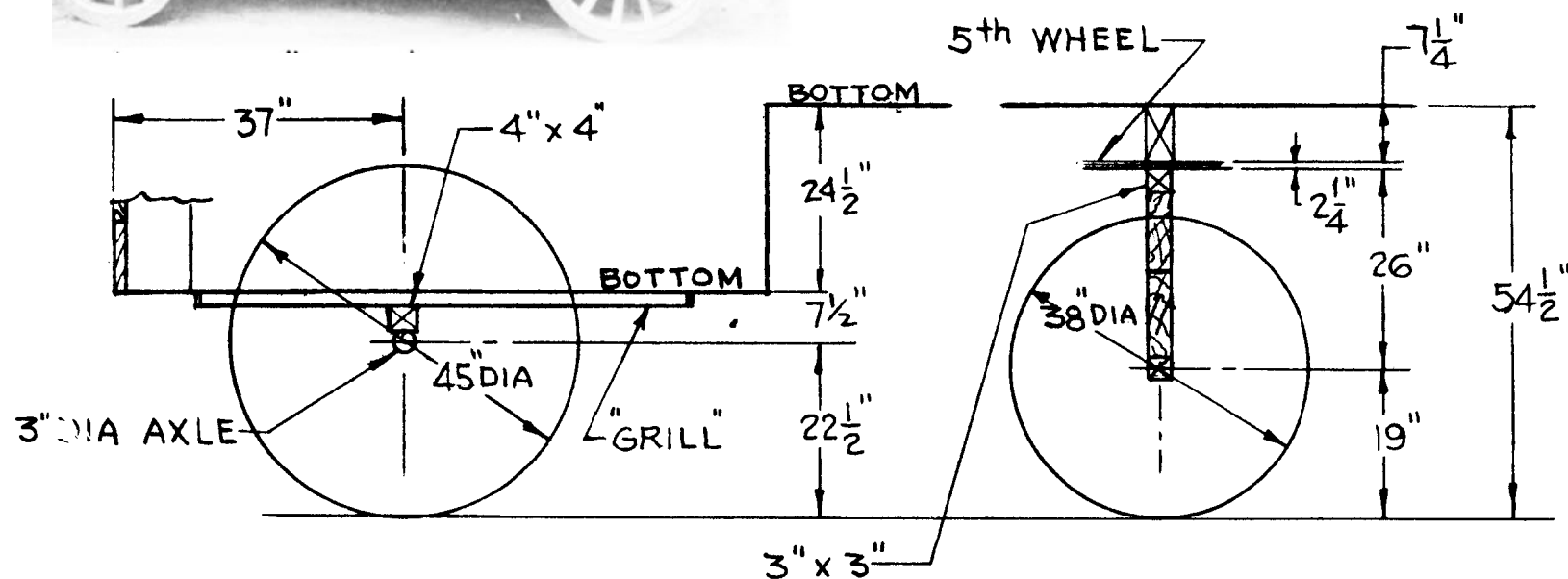
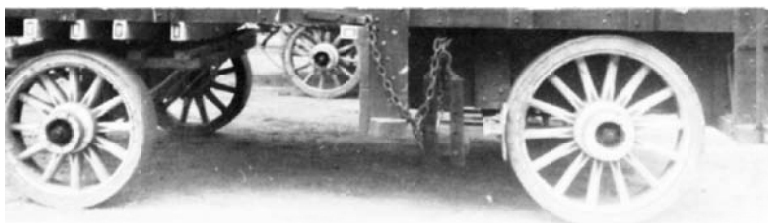
Christy Bros. Circus
Canvas Wagon and Loader No. 116

Pg 6 of 8

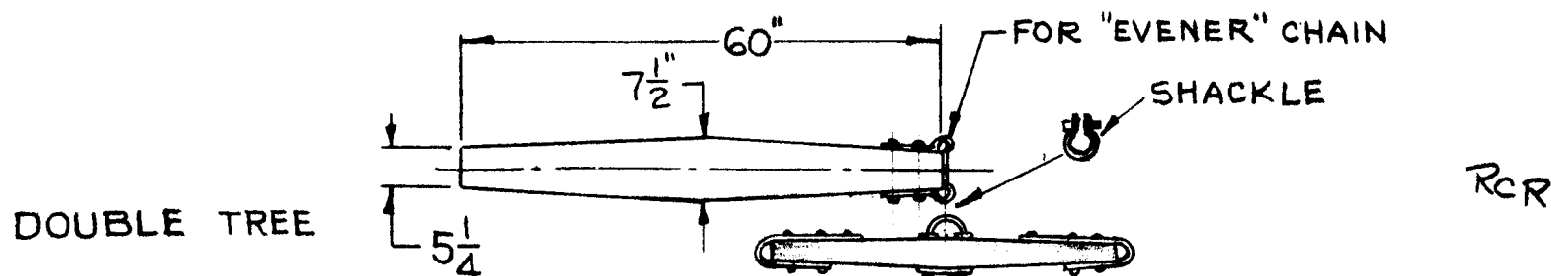
SCALE: 1/2" = 1'

SCANNED & REVISED:
03/19/03

DRAWING NUMBER
#0195



"SCHEMATIC" SHOWING RELATIONSHIP BETWEEN FRONT AND REAR WHEEL MOUNTING. 5th WHEEL THICKNESS IS ASSUMED.



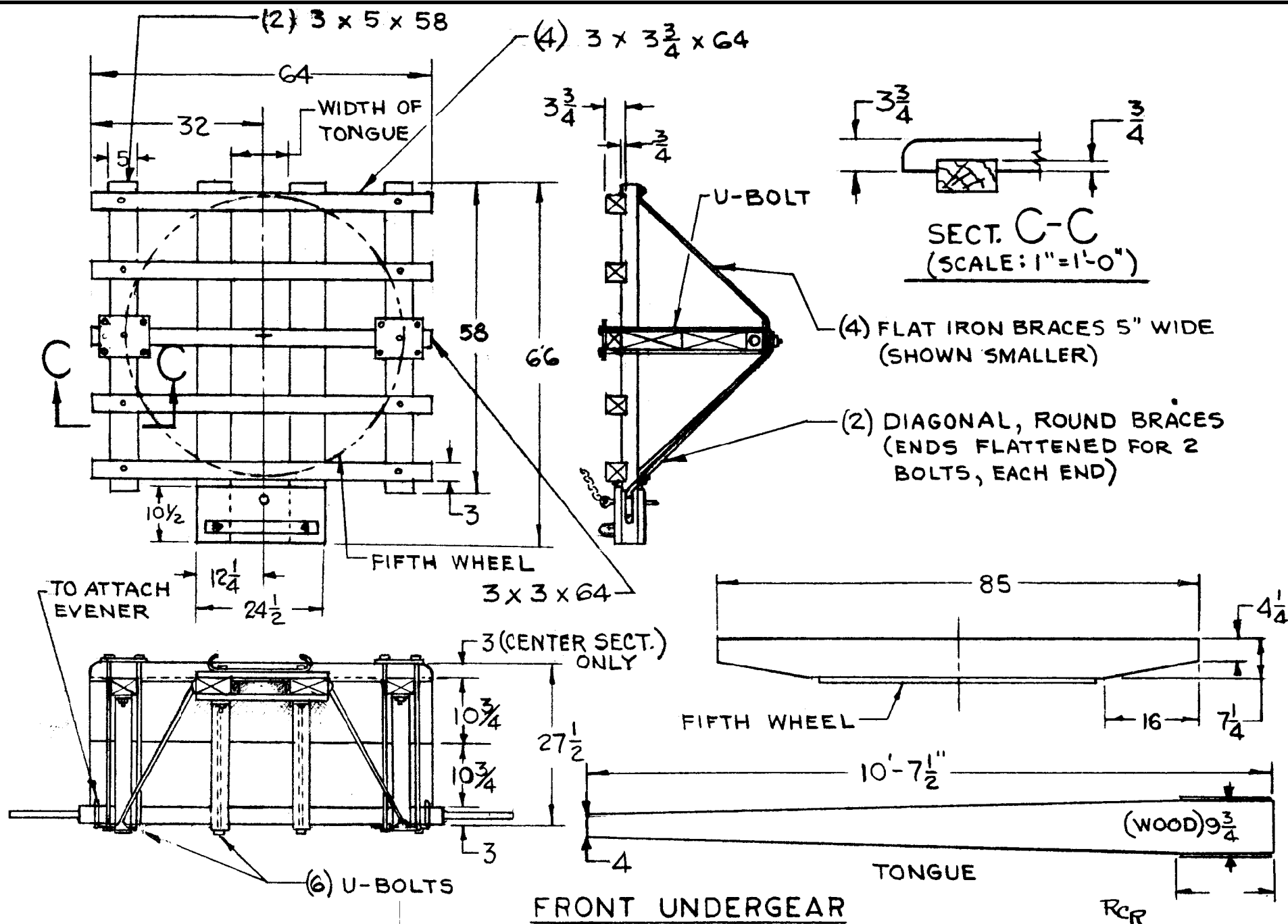
**Christy Bros. Circus
Canvas Wagon and Loader No. 116**

Pg 7 of 8

SCALE: 1/2" = 1'

SCANNED & REVISED:
03/19/03

DRAWING NUMBER
#0195



Christy Bros. Circus
Canvas Wagon and Loader No. 116

Pg 8 of 8

SCALE: 1/2" = 1'

SCANNED & REVISED:
 03/19/03

DRAWING NUMBER
#0195