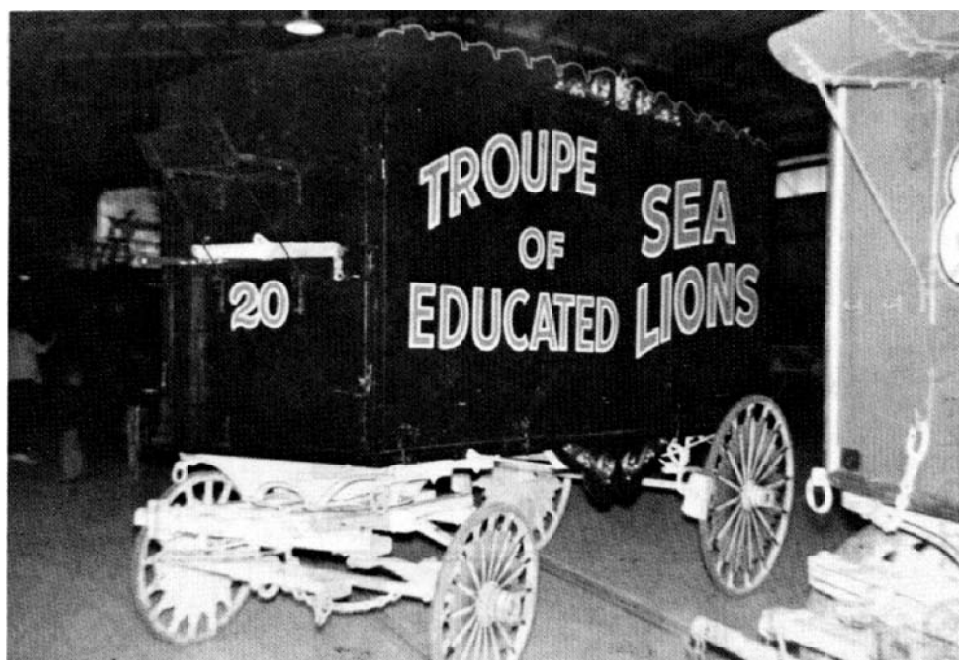
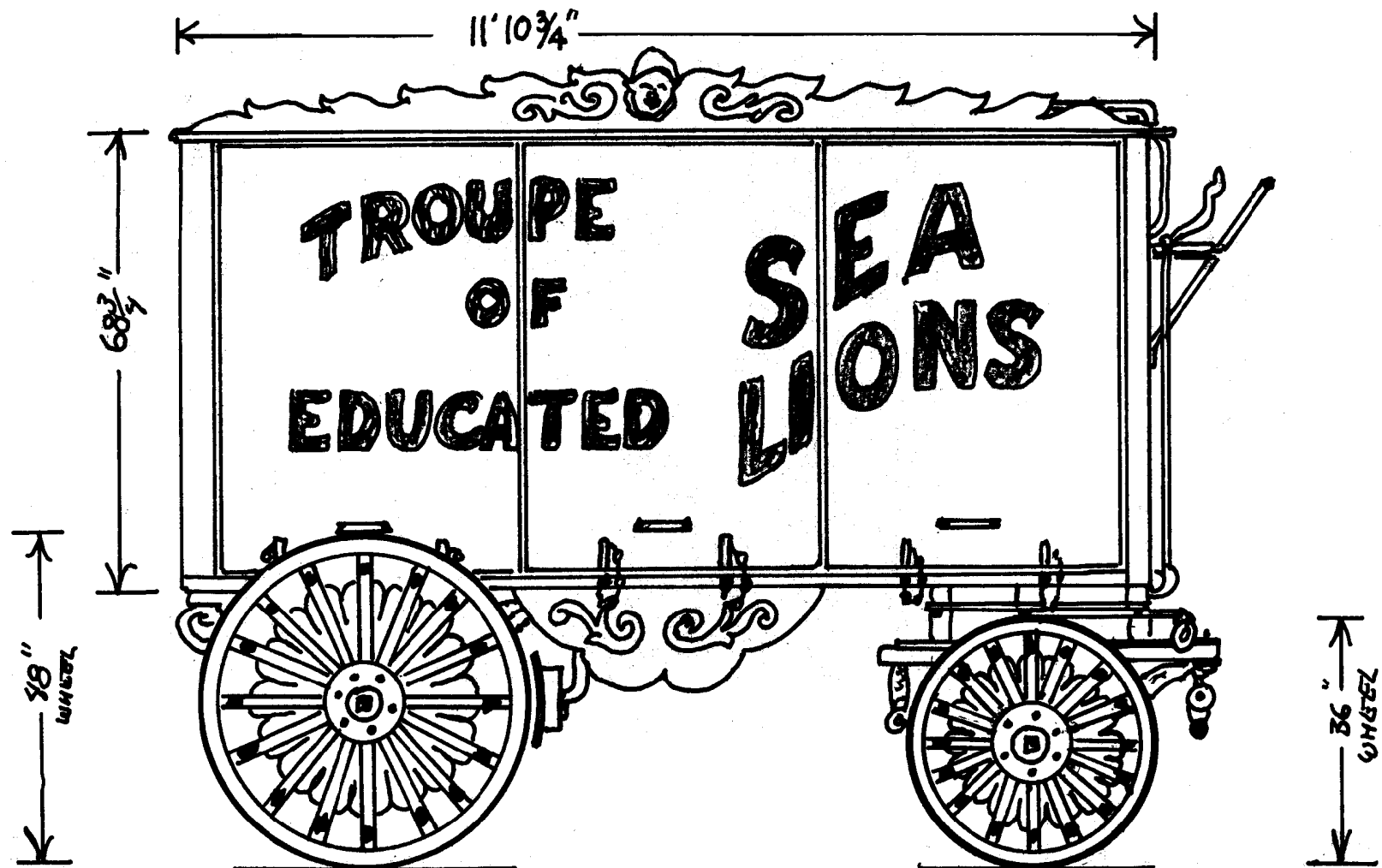


Side Views of Cage No. 20 with Side Boards Removed.  
Bill Cooker Photos taken at Milwaukee Lake Side.



Side view of the Closed Cage Wagon No. 20 Showing Side Panels and lettering  
Ed Grimminger Photo

Circus World Museum Cage No. 20			
DATE: 1974	SCALE: 1/2" = 1'	SCANNED & REVISED: 09/28/2004	Pg 1 of 7
Circus Model Builders			
Drawn By Ed Grimminger			DRAWING NUMBER <b>#0244</b>



**Wagon Notes:**

Wagon Body - Red

Undergear - White

Scrolls - Gold

Panel Lettering - Gold Letters with White Edges

**Wheels**

Rear - 48" with 1 3/4" Tire

Front - 36" with 1 3/8" Tire

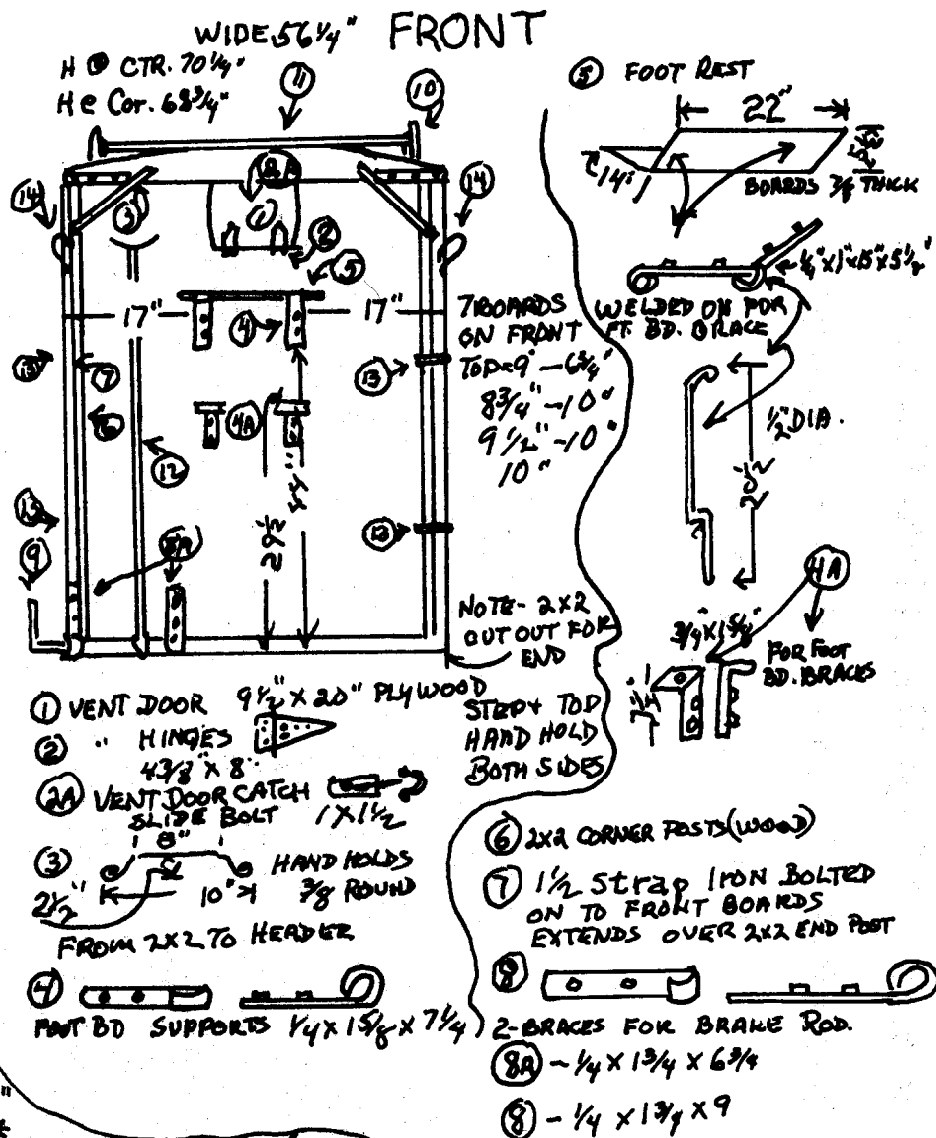
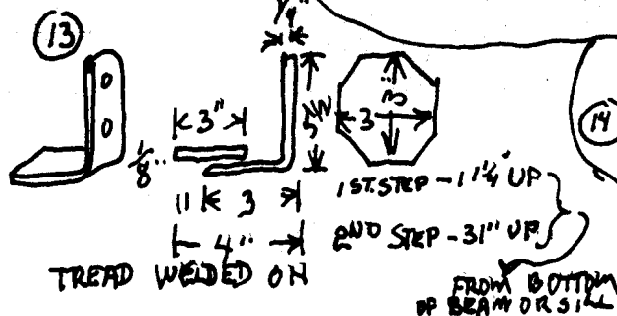
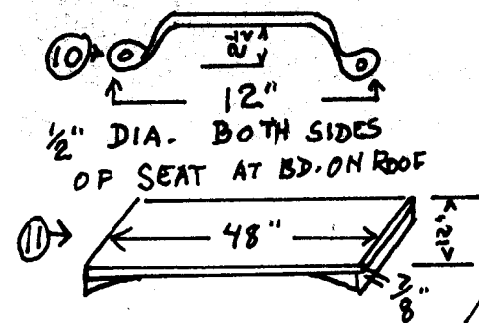
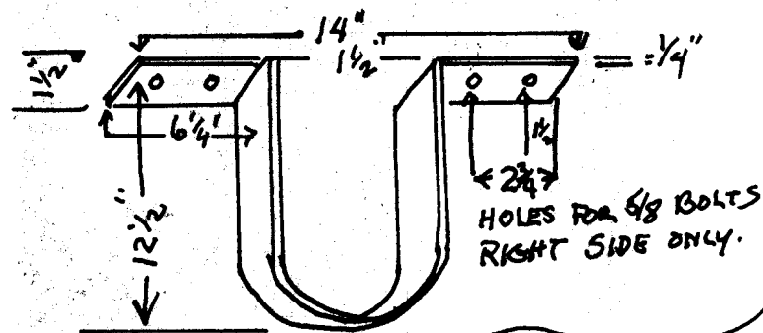
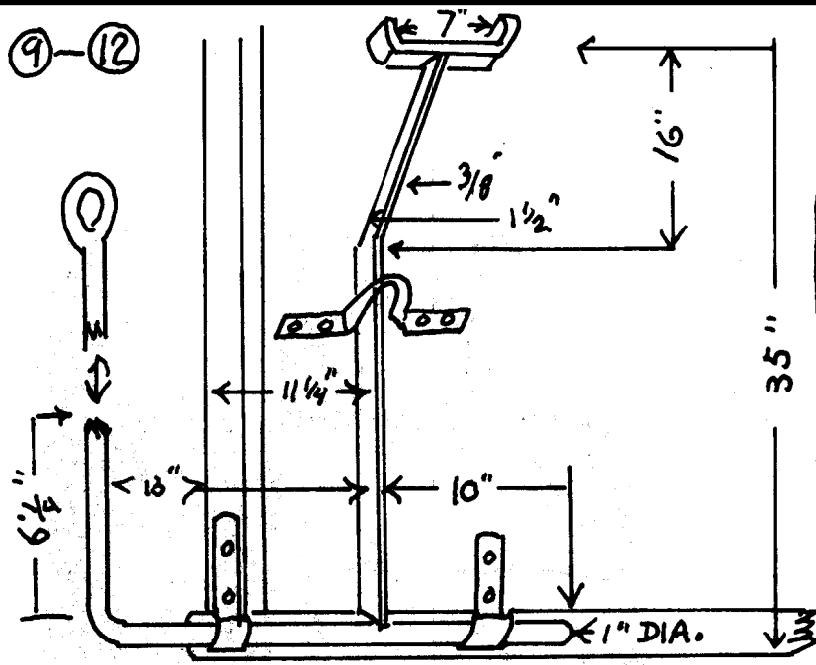
**Circus World Museum  
Cage No. 20**

Pg 2 of 7

SCALE: 1/2" = 1'

SCANNED & REVISED:  
09/28/2004

DRAWING NUMBER  
**#0244**



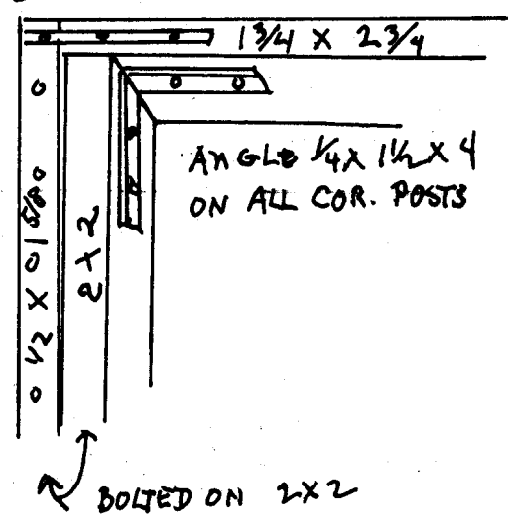
# Circus World Museum Cage No. 20

SKY BOARD FULL LENGTH GETTING SMALLER AT ENDS. CTR. SMALL 4"x8"

SKY BOARD

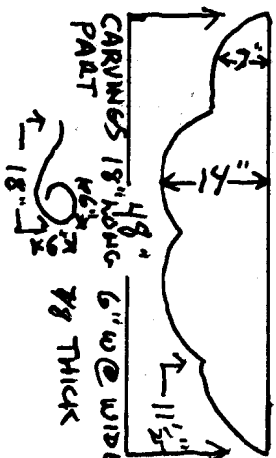
END 16" SCROLLS

# CORNER DETAIL



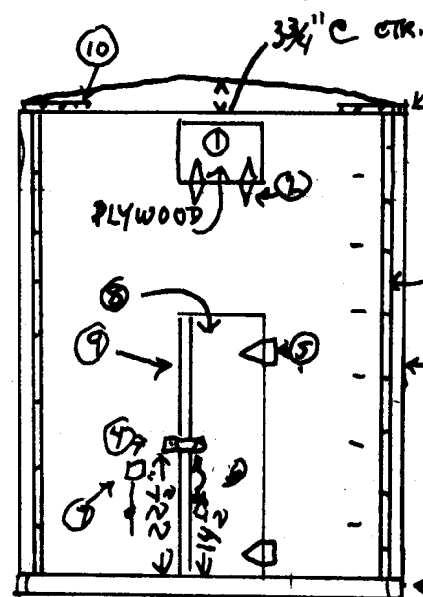
ROOF IS TIN. LAPS 1" OVER SIDES + ENDS BETWEEN ROOF + TOP BEAM. THERE IS 1X2 ANGLE TO HOLD SIDE PANELS. ROOF EXTENDS OVER THIS

MUD BOARD



2 ANGLES IN BACK OF MUD BOARDS AS BRACES 3/8" X 1/2" X 8" X 18 1/2"

W-56 1/4"  
H-@ 70 1/4"  
H-@ CORNER 6'8 3/4" REAR



7 BOARDS ON BACK TOP 9"-6 3/4"-8 3/4"-10" 9 1/2"-10"-10"

1 1/2" STRAP IRON 10 2X2 WOOD POST

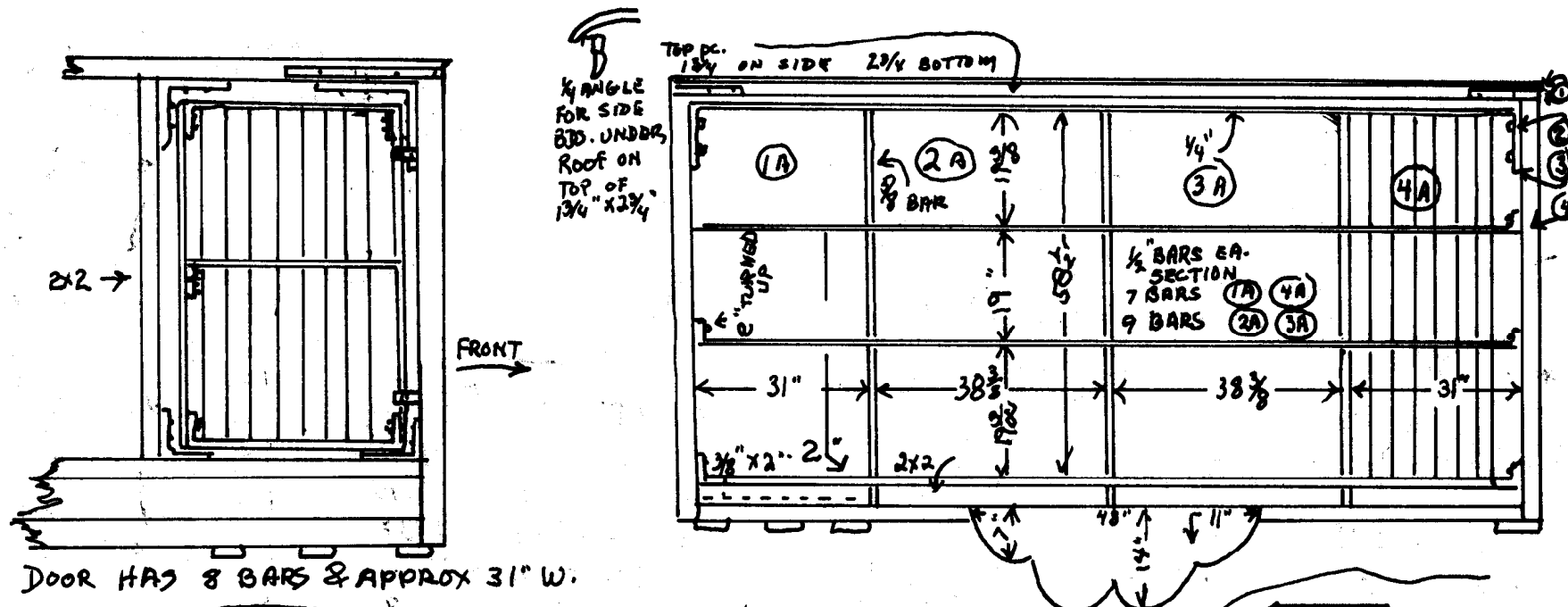
1/4 X 1/4 X 6 3/4 ALL 4 TOP CORNERS

8 DOOR 19 1/4" X 38 1/2" 9 STRAP IRON 1/4 X 1/4 X 38 1/2" PLYWOOD 3/4"

- 1 VENT DOOR 9 1/2" X 20"
- 2 VENT HINGES 4 7/8" X 8"
- 3 CROSS BEAM 1 1/2" X 5 1/4" X 58 1/4"
- 4 HASP 13 1/4" WIDE 9 1/2" LONG 2 1/2" UP
- 5 DOOR HINGES 4 7/8" W 8" L
- 6 DOOR HANDLE 7" L = 1 1/2" OPENING 1" W 14 1/2" UP

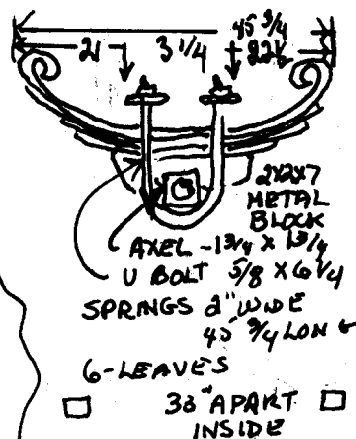
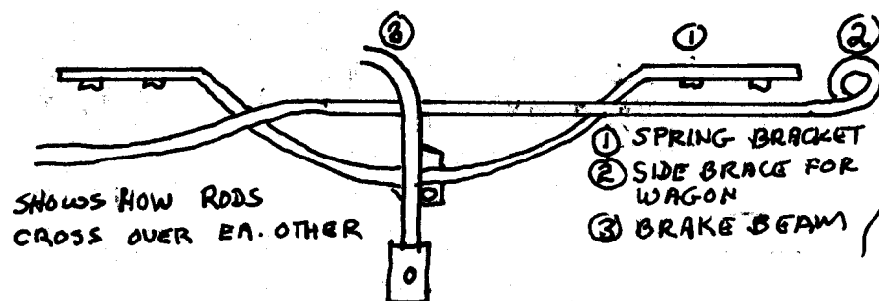
7 CHAIN HOLDER FOR HASP 2 1/4" X 4" 17" UP CHAIN 9-1 1/8" LINKS 1/8" THICK PIN 3 1/2" LONG 1/8" THICK

## Circus World Museum Cage No. 20



THERE ARE 11 ARCH PIECES ACROSS TOP OF CAGE FOR ROOF.

THERE ARE ANGLES ON EA. CORNER OF DOORWAY. TOP-MIDDLE & BOTTOM CROSS PIECES ON DOOR ARE BENT & RIVETED TO END PIECES



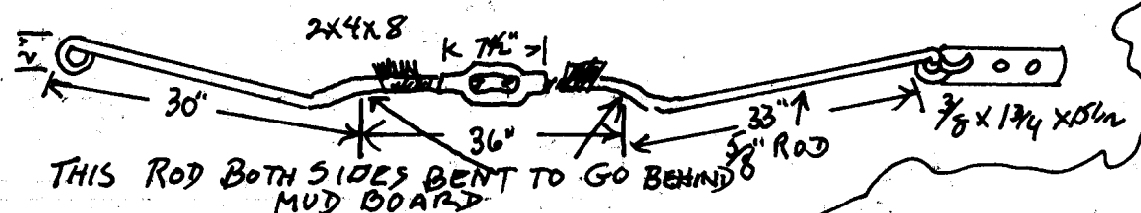
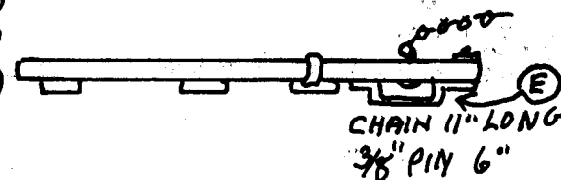
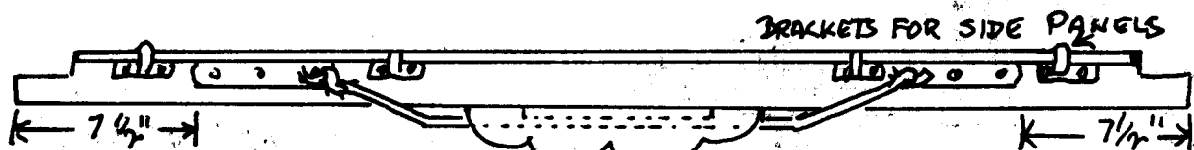
- ① 1/4 x 1/4 x 6 3/4
- ② 1/4 x 1 1/2 x 4
- ③ - 2x2 CORNER POST
- ④ - 1/2 x 1 5/8 BOLTED ON 2x2

2x2 CUT OUT ON FRONT + BACK ENDS 7/8" IN 1 1/4" DOWN. TO ALLOW FOR TOP BOARD ON ENDS AT TOP BOTTOM FOR SIDE RAIL

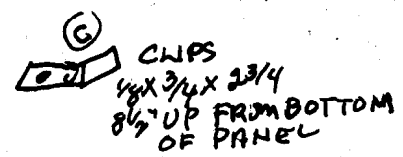
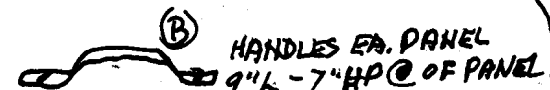
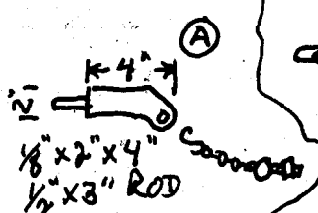
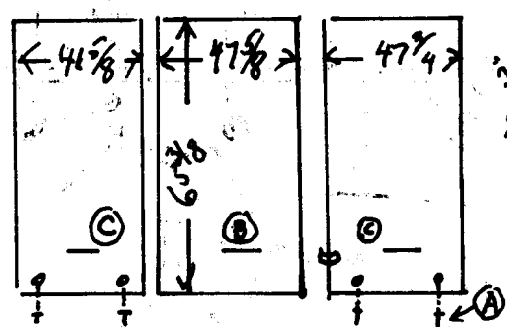
⑤ FLOOR BDD. 1/2 x 3 COVERED WITH TIN.

## Circus World Museum Cage No. 20



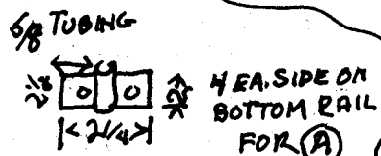


DBL. TREE 44" LONG - 1 3/4 x 1 3/4 (G)  
 SINGLE TREE EA. 21 1/2" LONG - 1" ROD  
 SIDE SPRING 43" LONG  
 CROSS " 47"

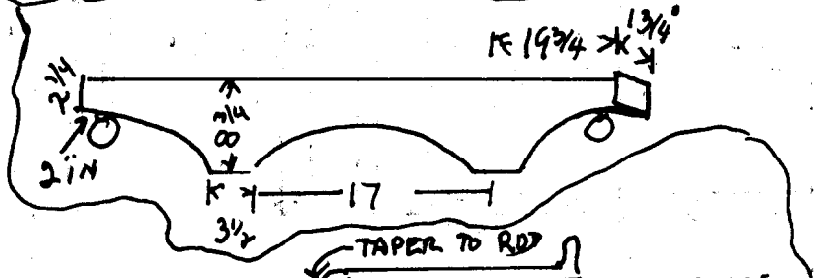


WHITE EDGE ON GOLD LETTRES (ON PANELS)  
 WAGON - RED = WHITE  
 UNDER GEAR - GOLD SCROLLS

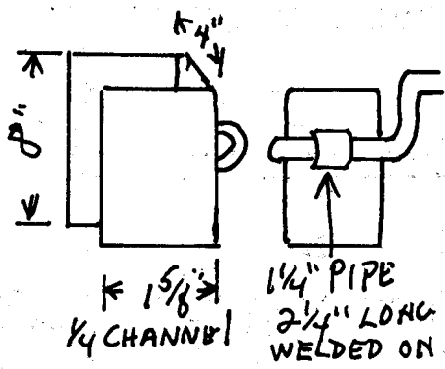
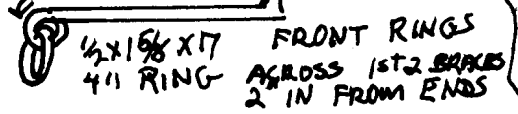
PANELS HELD AT TOP BY ANGLE ALONG TOP RAIL  
 CHAINS (NONE @ DOOR)  
 3/8 EYE BOLT 3" UP TO 4" BY 7 1/2" IN - 54 1/2" LINKS 2 - "S" LINKS



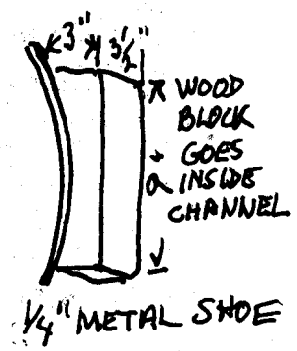
NONE ON CENTER PANEL



5TH WHEEL IS 1/2 x 2 1/2



Φ OF WHEEL TIRE  
 5/8" OUT FROM SIDE OF CAGE



# Circus World Museum Cage No. 20