

This plan was prepared by Terry K. Wostal of Baraboo, WI, and features the Circus World Museum's generator wagon. We have little or no actual historical information on this wagon.

The wagon came to the Museum from Jimmy Wood's Thousand Oaks after seeing service on Arthur Bros. and Hagenbeck Wallace. However the wagon was never a generator until it arrived at the Museum.

Chappie Fox needed a generator wagon for the Old Milwaukee Days parades, so this wagon was turned into one.

## Circus World Museum Generator Wagon

DATE: 1977

SCALE: 1/2" = 1'

SCANNED & REVISED:  
08/15/02

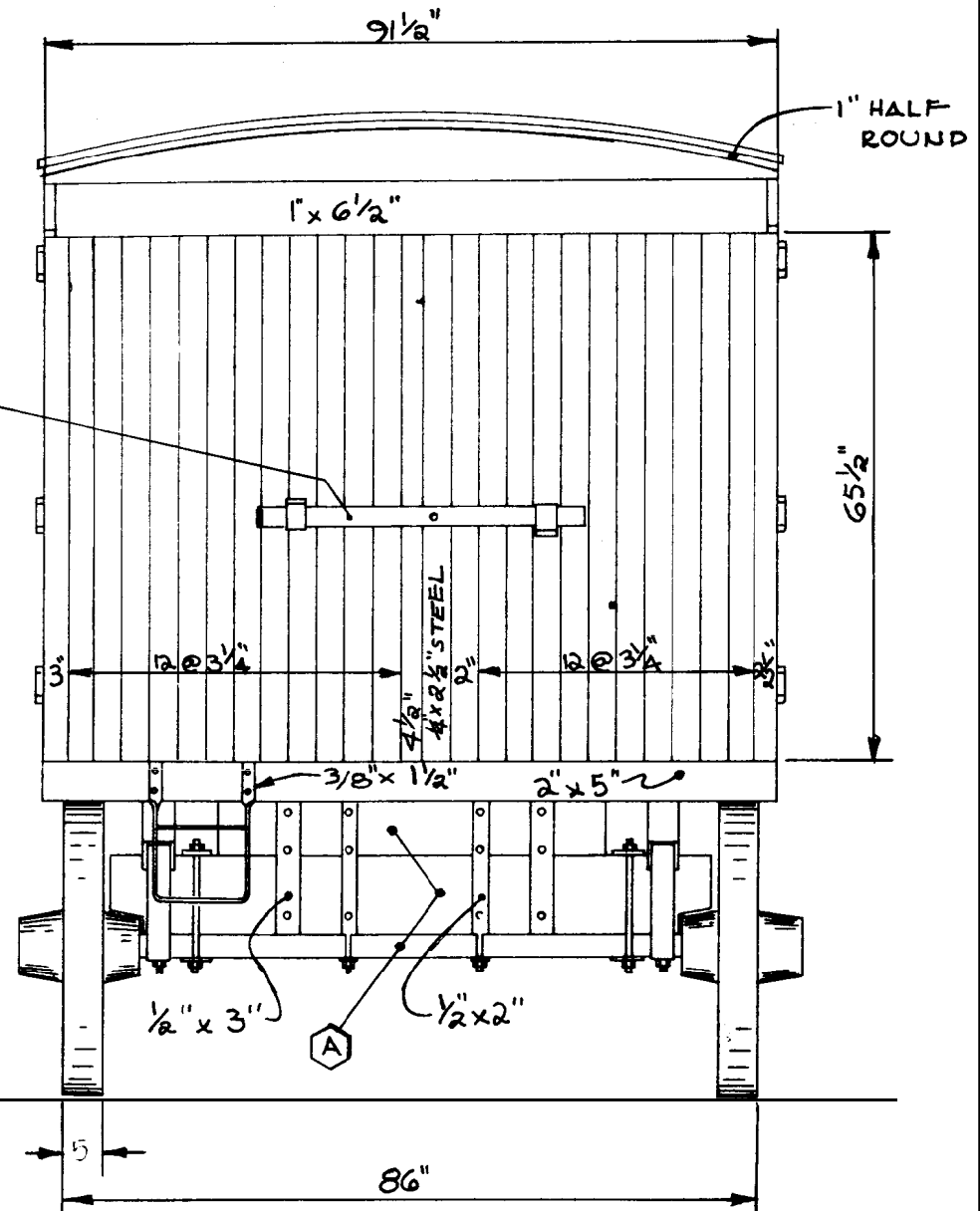
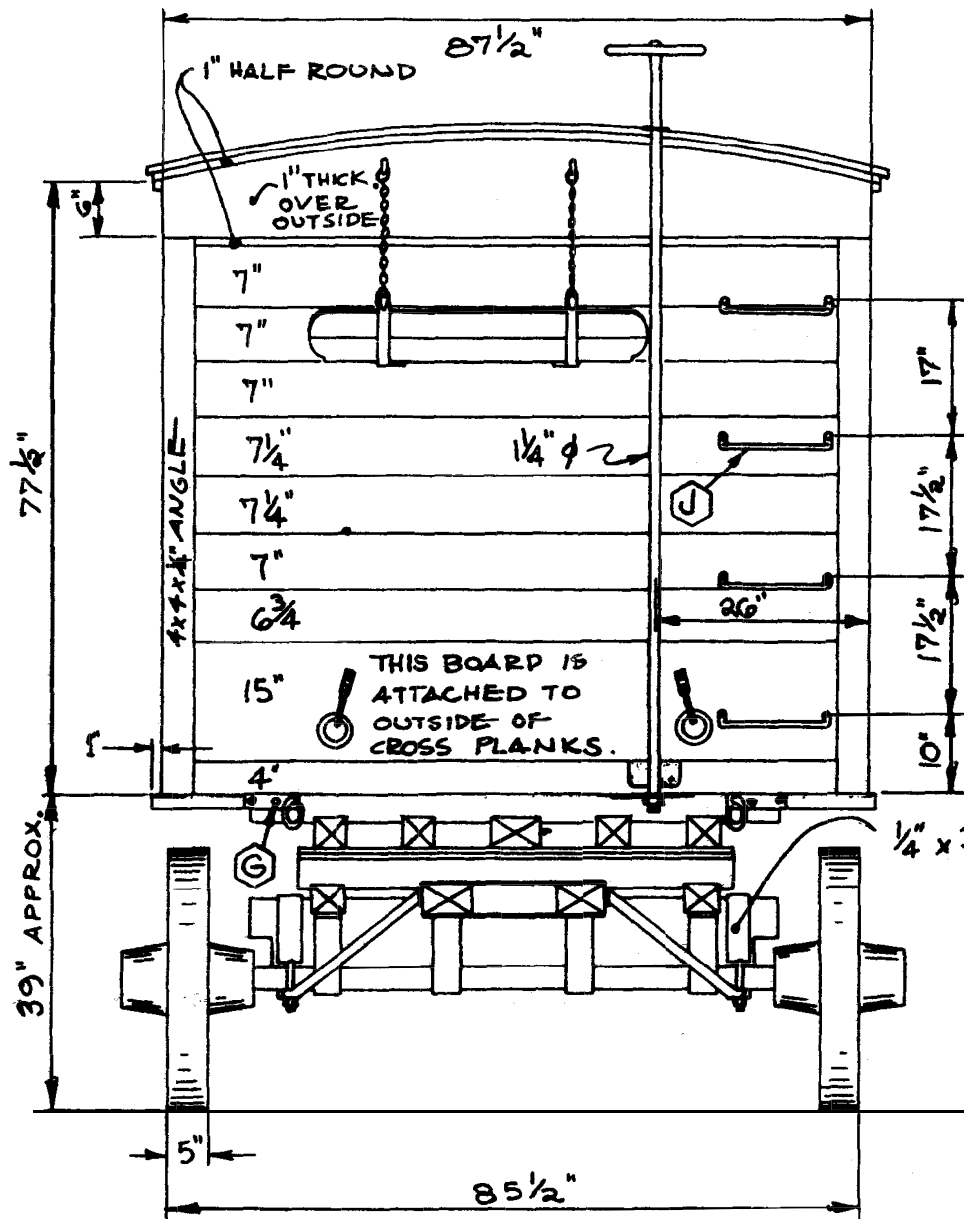
Pg 1 of 10

## Circus Model Builders

Drawn By  
Terry K. Wostal

DRAWING NUMBER

#0260



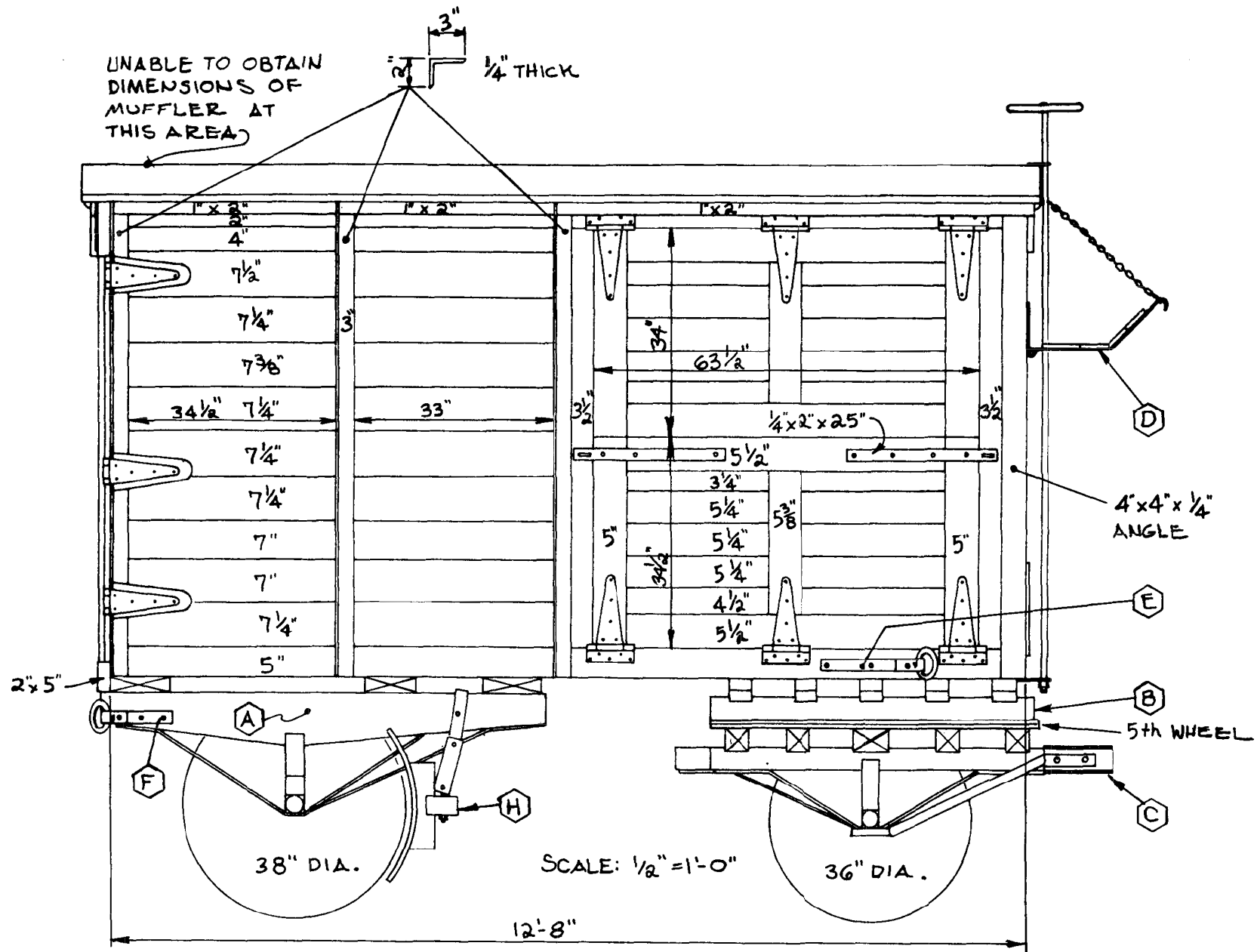
**Circus World Museum  
Generator Wagon**

Pg 2 of 10

SCALE: 1/2" = 1'

SCANNED & REVISED:  
08/15/02

DRAWING NUMBER  
**#0260**



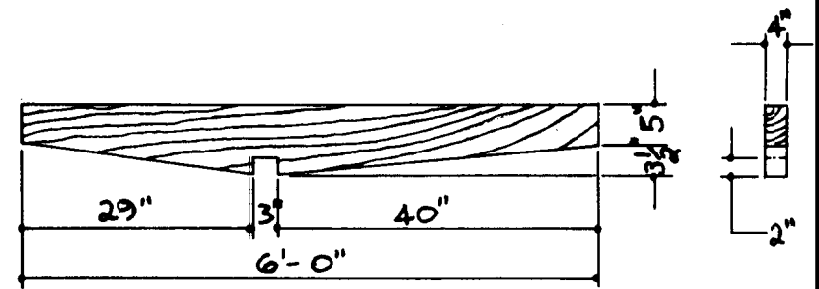
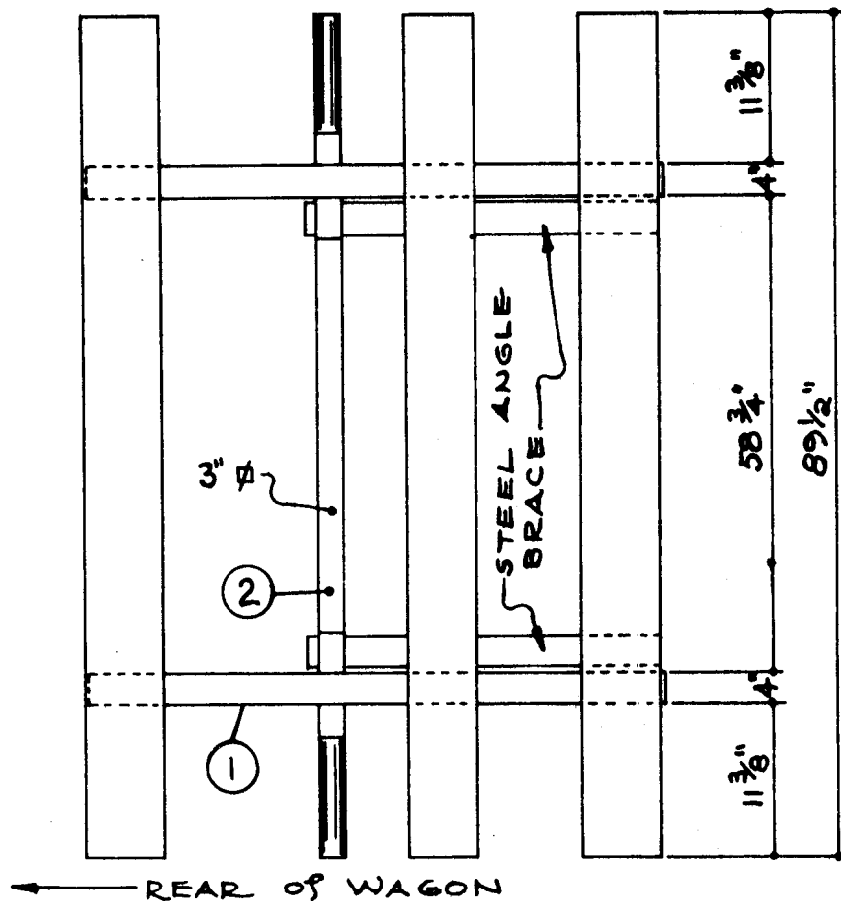
# Circus World Museum Generator Wagon

Pg 3 of 10

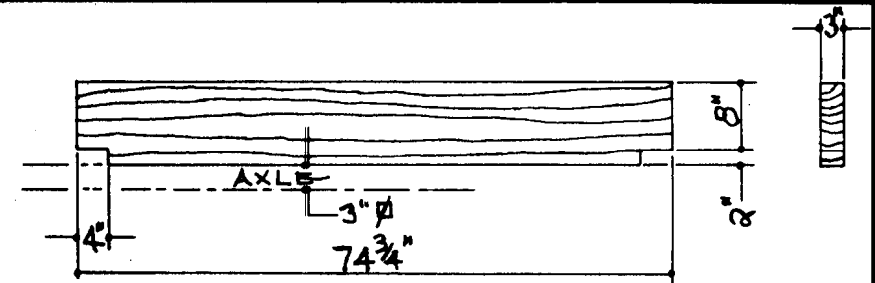
SCALE: 1/2" = 1'

SCANNED & REVISED:  
08/15/02

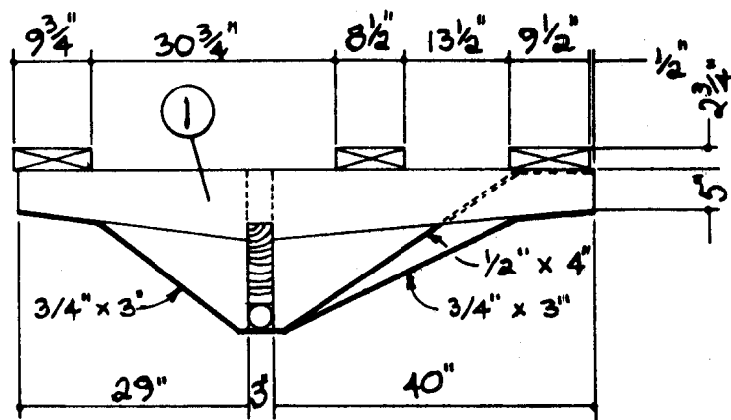
DRAWING NUMBER  
**#0260**



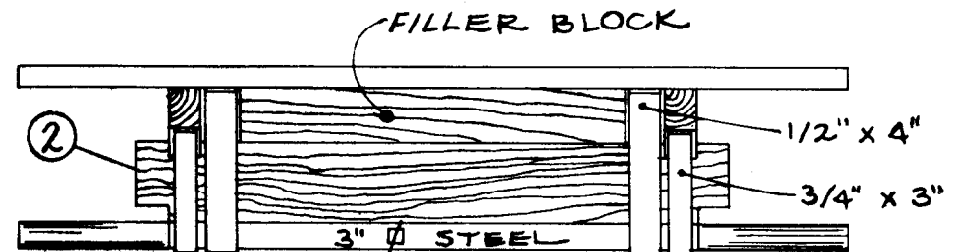
PART NO. ①



PART NO. ②



DETAIL "A"



**Circus World Museum  
Generator Wagon**

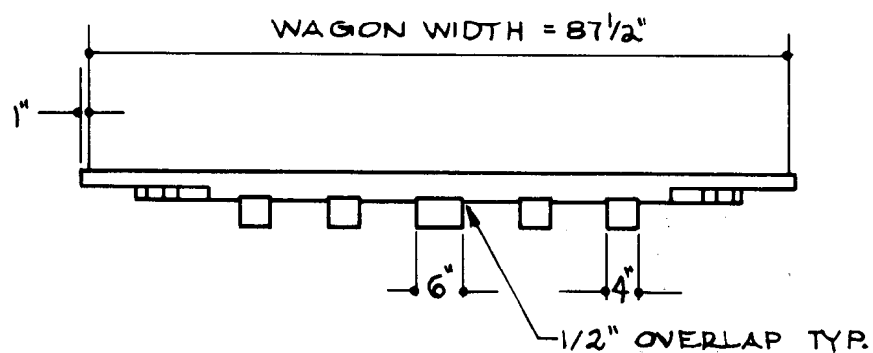
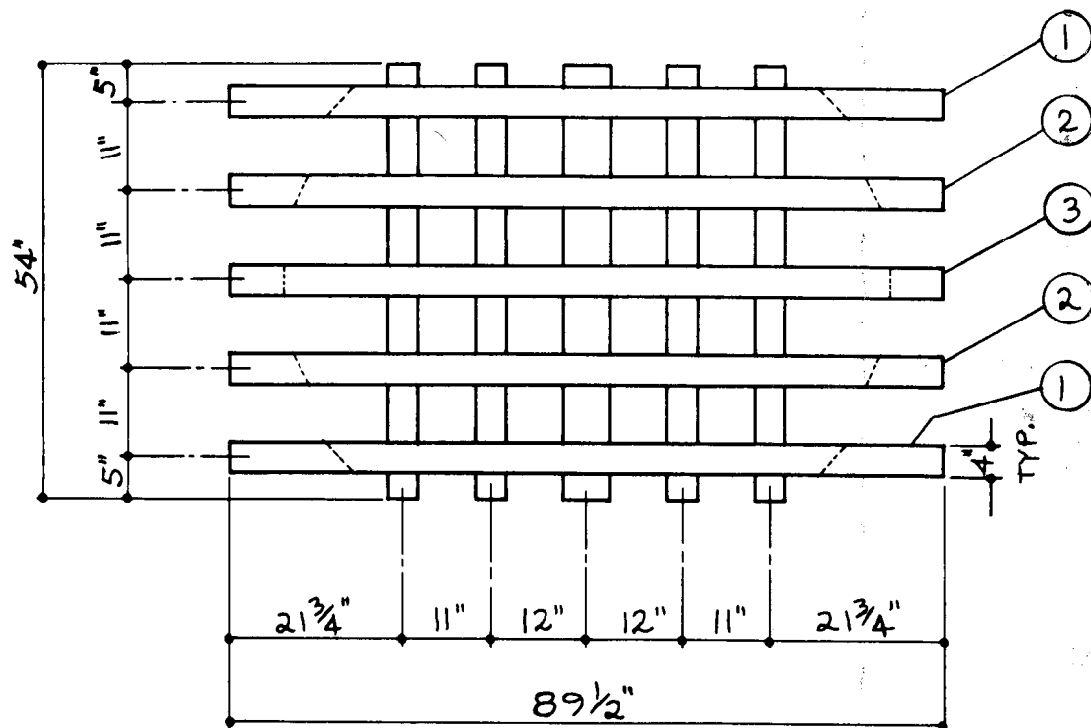
Pg 4 of 10

SCALE:  $1\frac{1}{2}" = 1'$

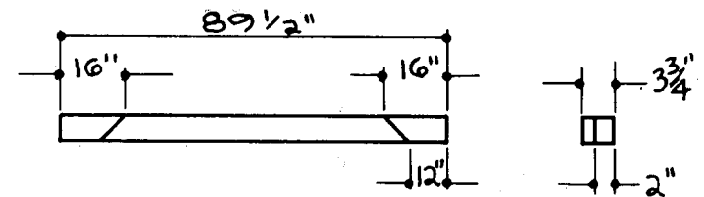
SCANNED & REVISED:  
08/15/02

DRAWING NUMBER  
**#0260**

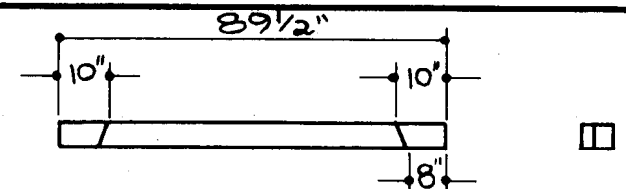




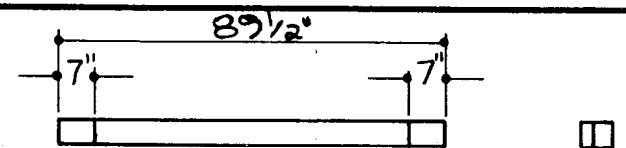
**DETAIL 'B'**



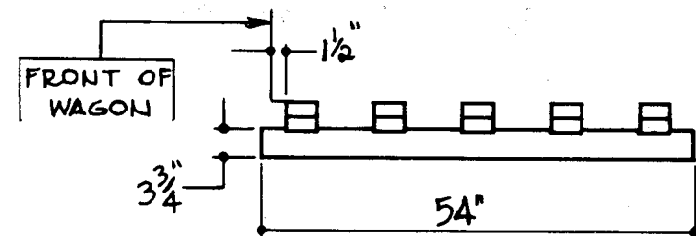
**PART NO. ①**



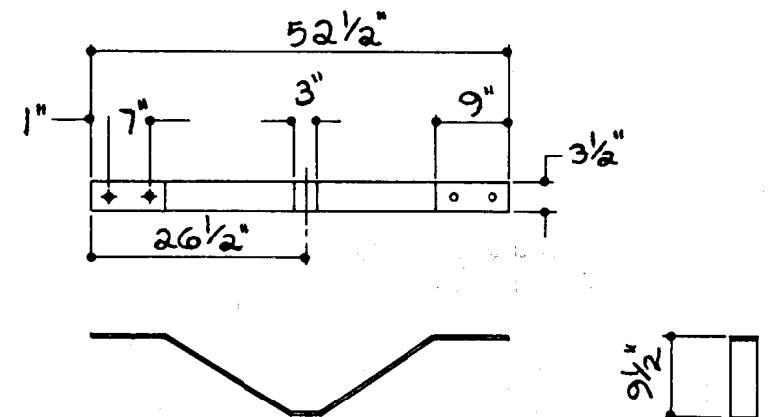
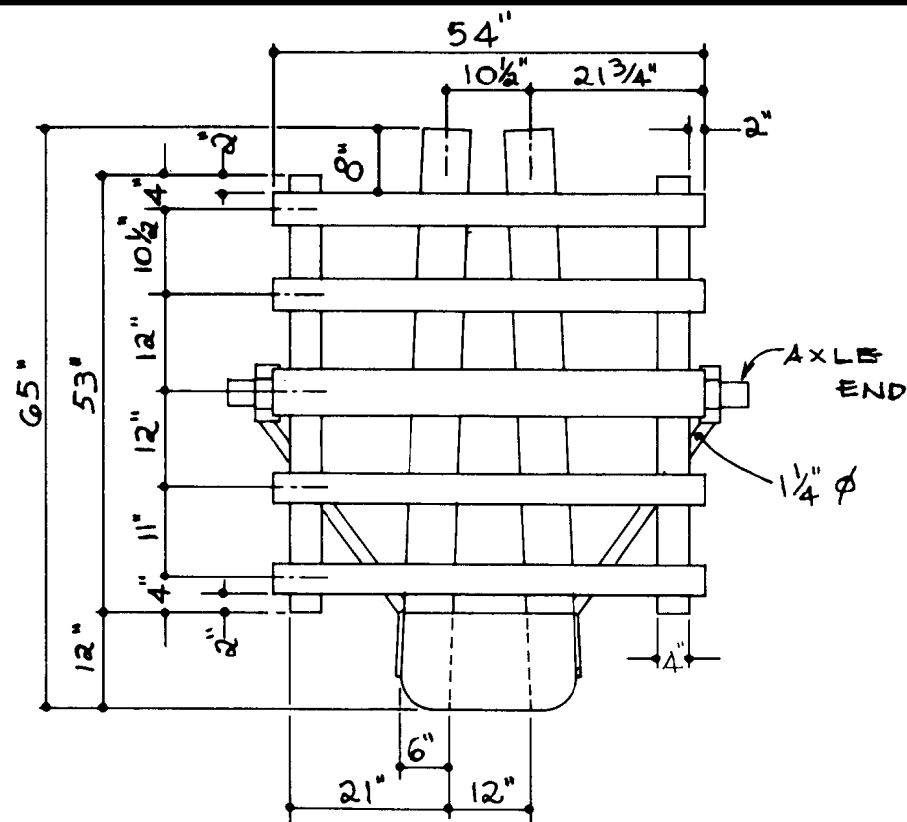
**PART NO. ②**



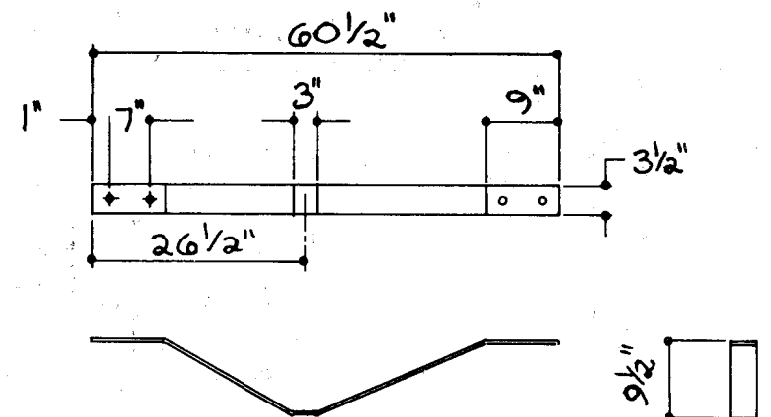
**PART NO. ③**



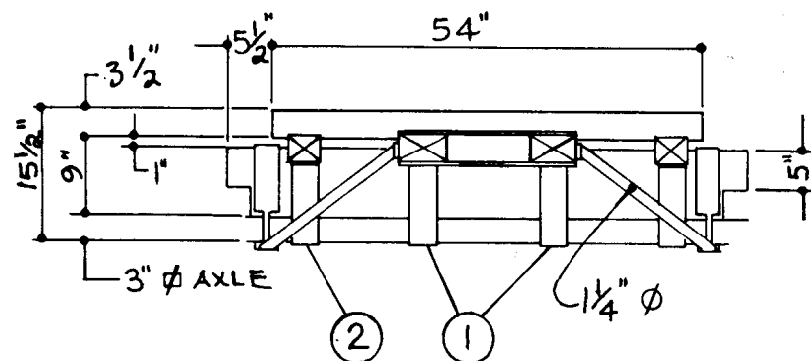
**Circus World Museum  
Generator Wagon**



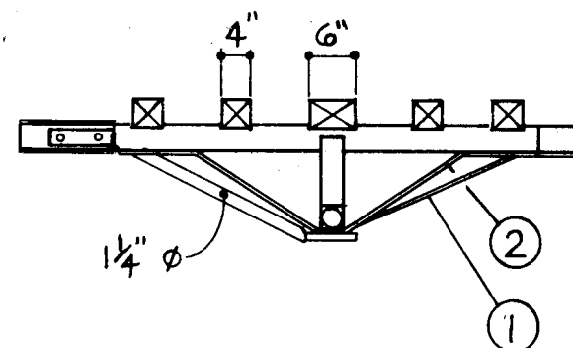
PART NO. ② MAT: 1/2" x 3 1/2" STEEL



PART NO. ① MAT: 1/2" x 3 1/2" STEEL



DETAIL "C"



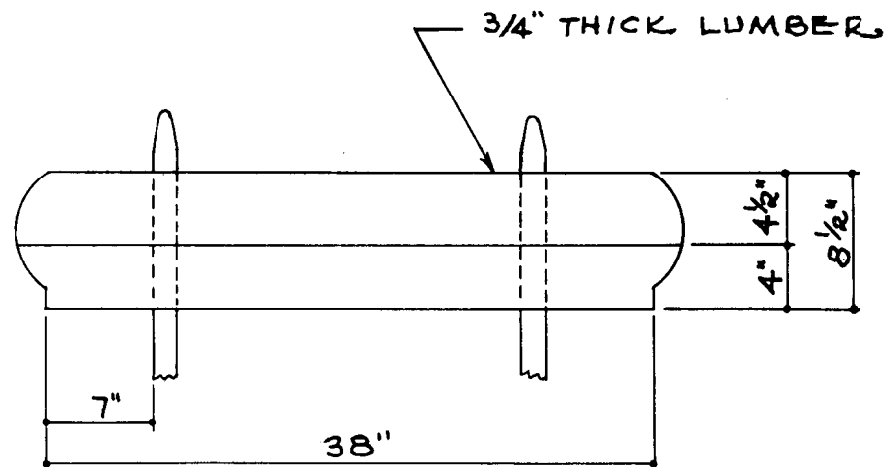
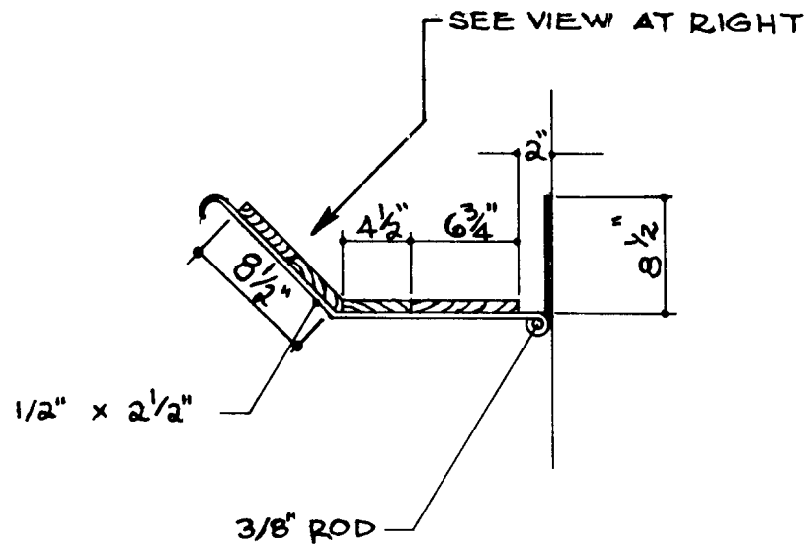
**Circus World Museum  
Generator Wagon**

Pg 6 of 10

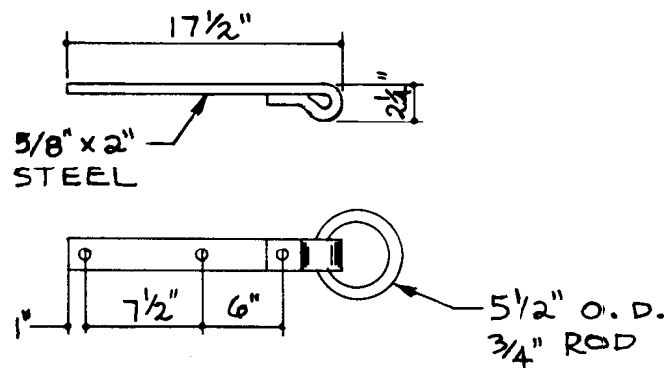
SCALE: 1/2" = 1'

SCANNED & REVISED:  
08/15/02

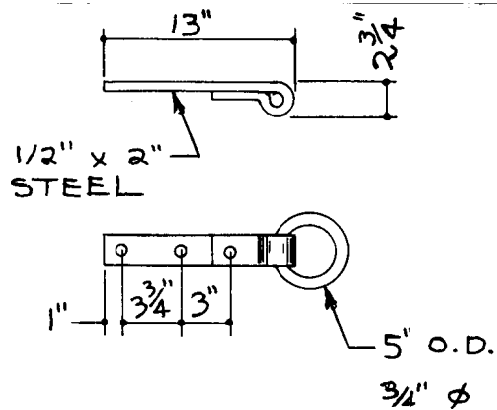
DRAWING NUMBER  
**#0260**



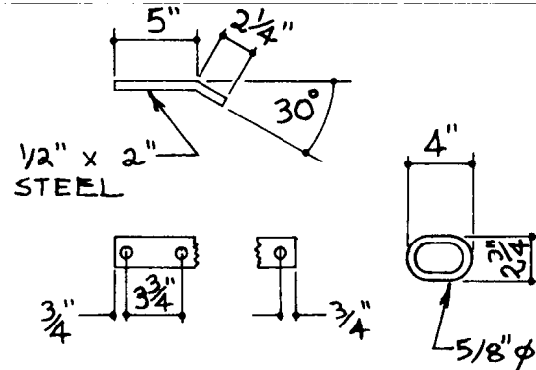
**DETAIL "D"**



**DETAIL "E"**



**DETAIL "F"**



**DETAIL "G"**

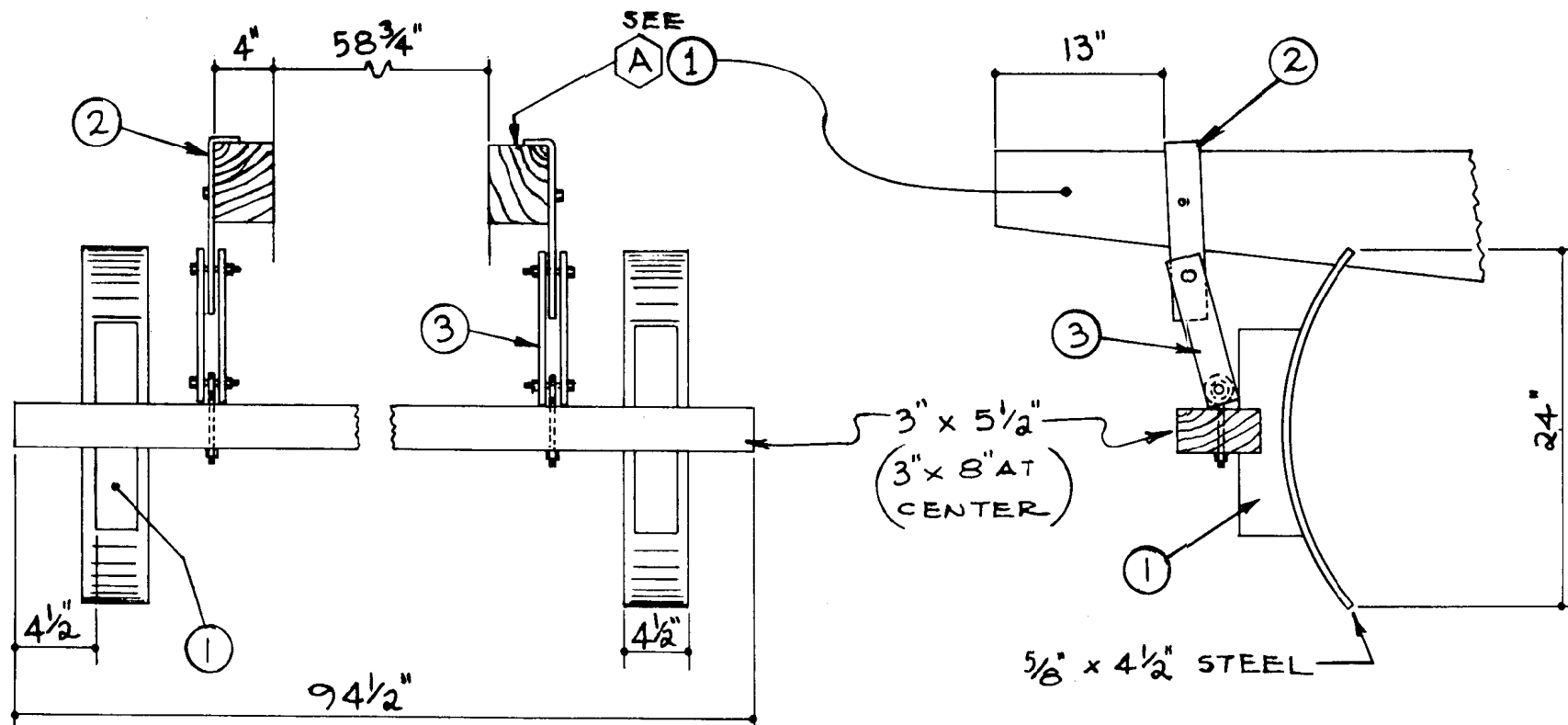
**Circus World Museum  
Generator Wagon**

Pg 7 of 10

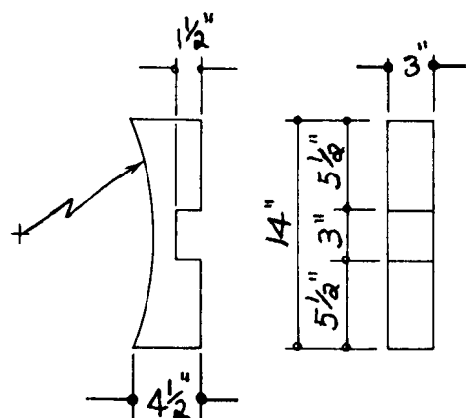
SCALE: 1/2" = 1'

SCANNED & REVISED:  
08/15/02

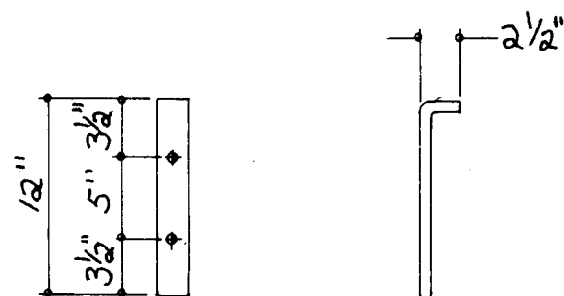
DRAWING NUMBER  
**#0260**



DETAIL "H"

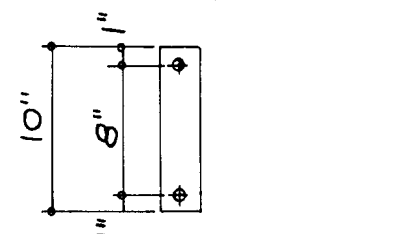


Part No. 1



MAT:  $\frac{3}{4}$ " x 2" STEEL

Part No. 2



MAT:  $\frac{1}{2}$ " x 2 1/2" STEEL

Part No. 3

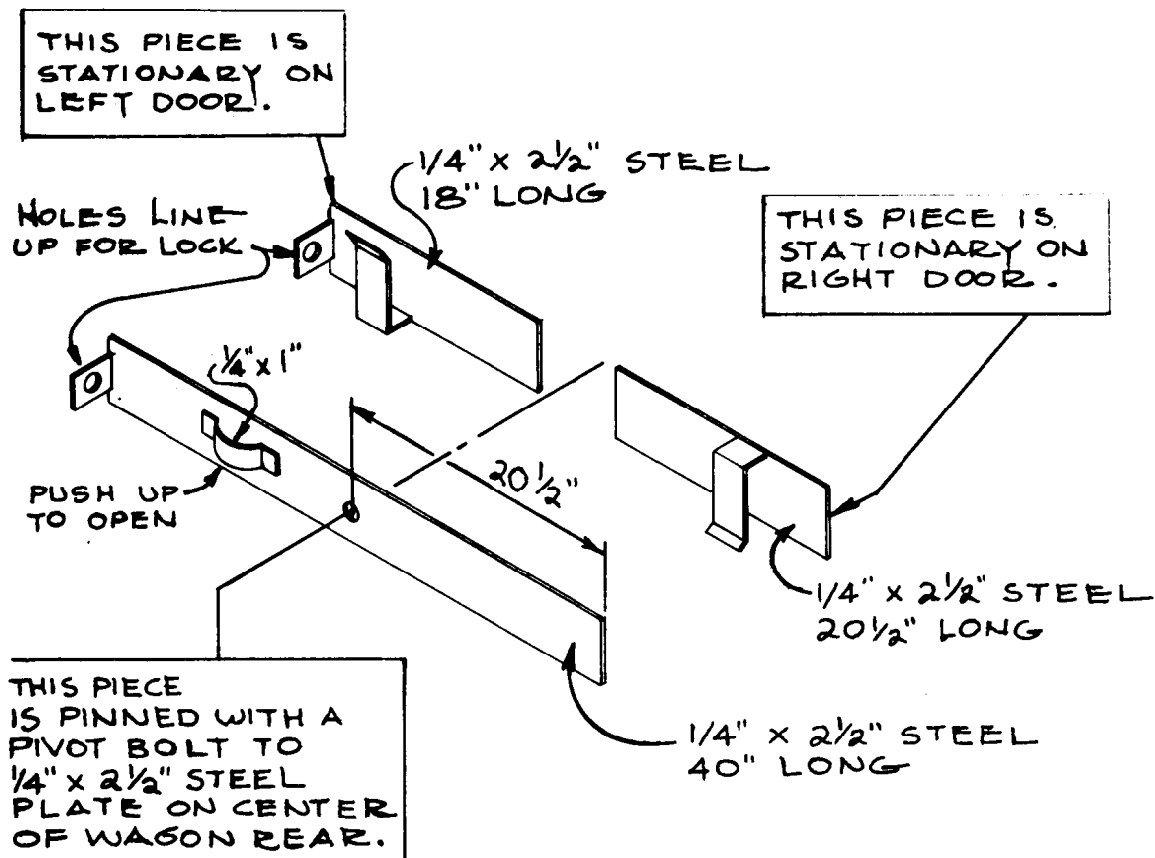
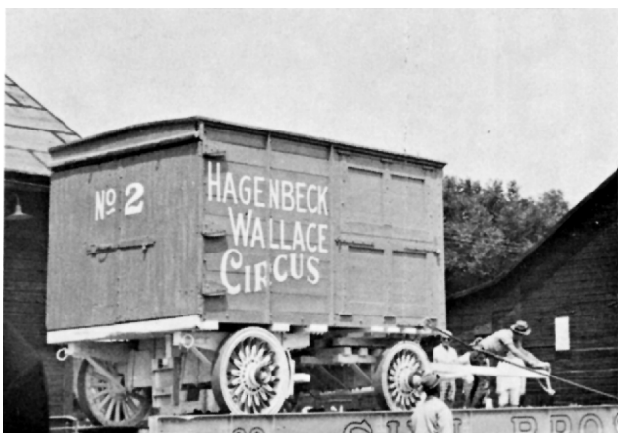
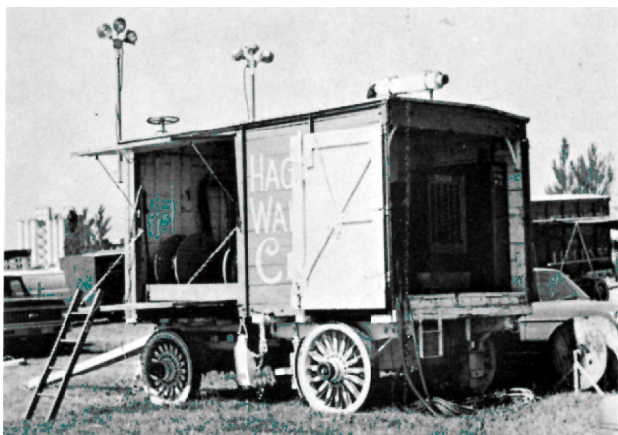
**Circus World Museum  
Generator Wagon**

Pg 8 of 10

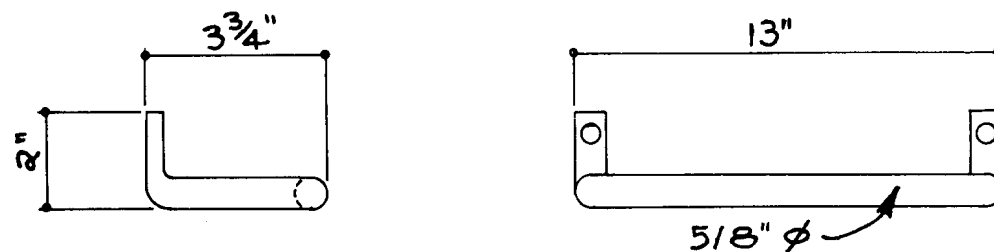
SCALE: 1/2" = 1'

SCANNED & REVISED:  
08/15/02

DRAWING NUMBER  
**#0260**



DETAIL "I"



DETAIL "J"

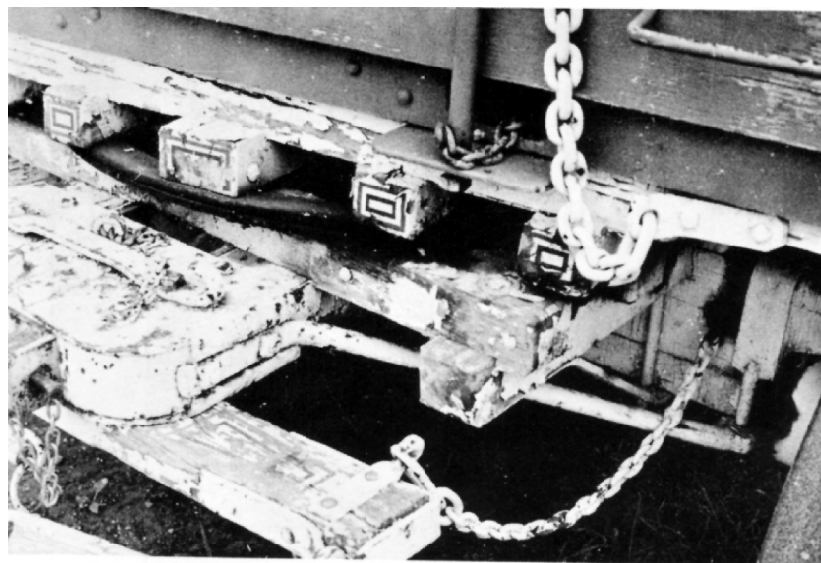
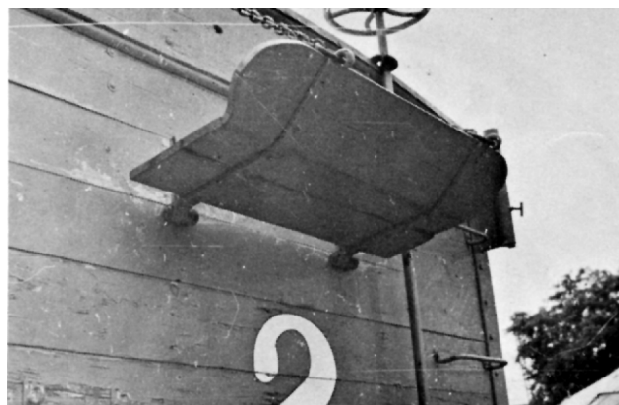
**Circus World Museum  
Generator Wagon**

Pg 9 of 10

SCALE: 1/2" = 1'

SCANNED & REVISED:  
08/15/02

DRAWING NUMBER  
**#0260**



## Circus World Museum Generator Wagon

Pg 10 of 10

SCALE: 1/2" = 1'

SCANNED & REVISED:  
08/15/02

DRAWING NUMBER  
**#0260**