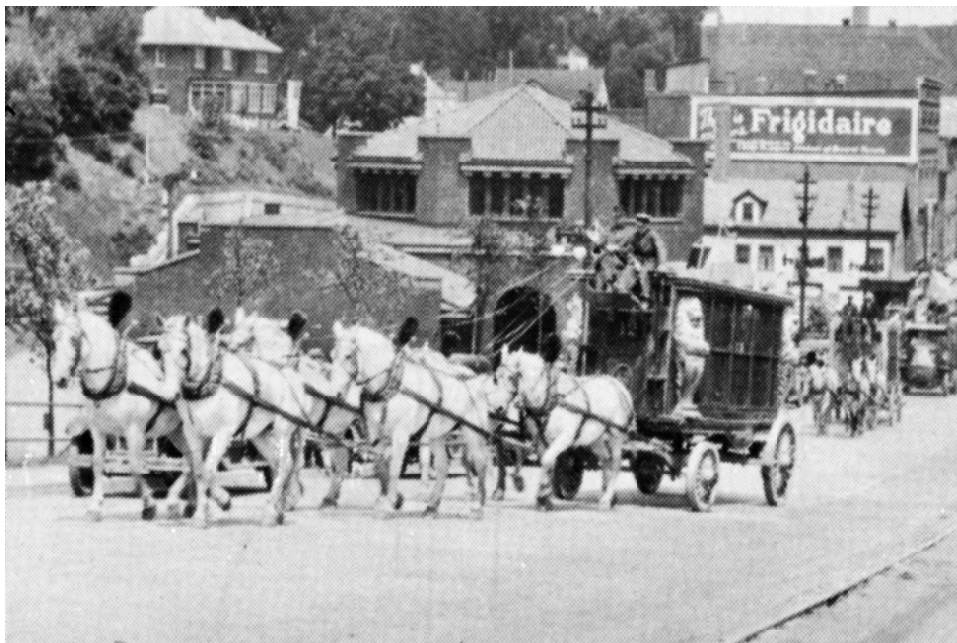


The photo above and below were taken during a parade in the 1929 season. This cages carried performing cats.



Close up of Sparks Circus Cage showing the carved corner figures. Photo believed to have been taken during the 1928 season.

There were 3–16 ft. cages on the Spark's Show and from the photos I've seen they appear to be the same except for the corner figures. Using the photos and some guessing, I've come up with the following set of plans. You'll see I've included sketches of the three different type corners. See Fig. A, B, and C.) (Fig. C was simply a painted design for which I've made a 1/2 sketch since it is symmetrical.) Also included is an exploded view of the front under-gear and a drawing of the brake assembly. The drawings of the hip ring, footboard hinge and step are not drawn to any scale. With these plans, photos and sketches you should be able to construct the 3 Sparks cages.

Sparks Circus Cage Wagons

DATE: 1928

SCALE: 1/2" = 1'

SCANNED & REVISED:
05/15/02

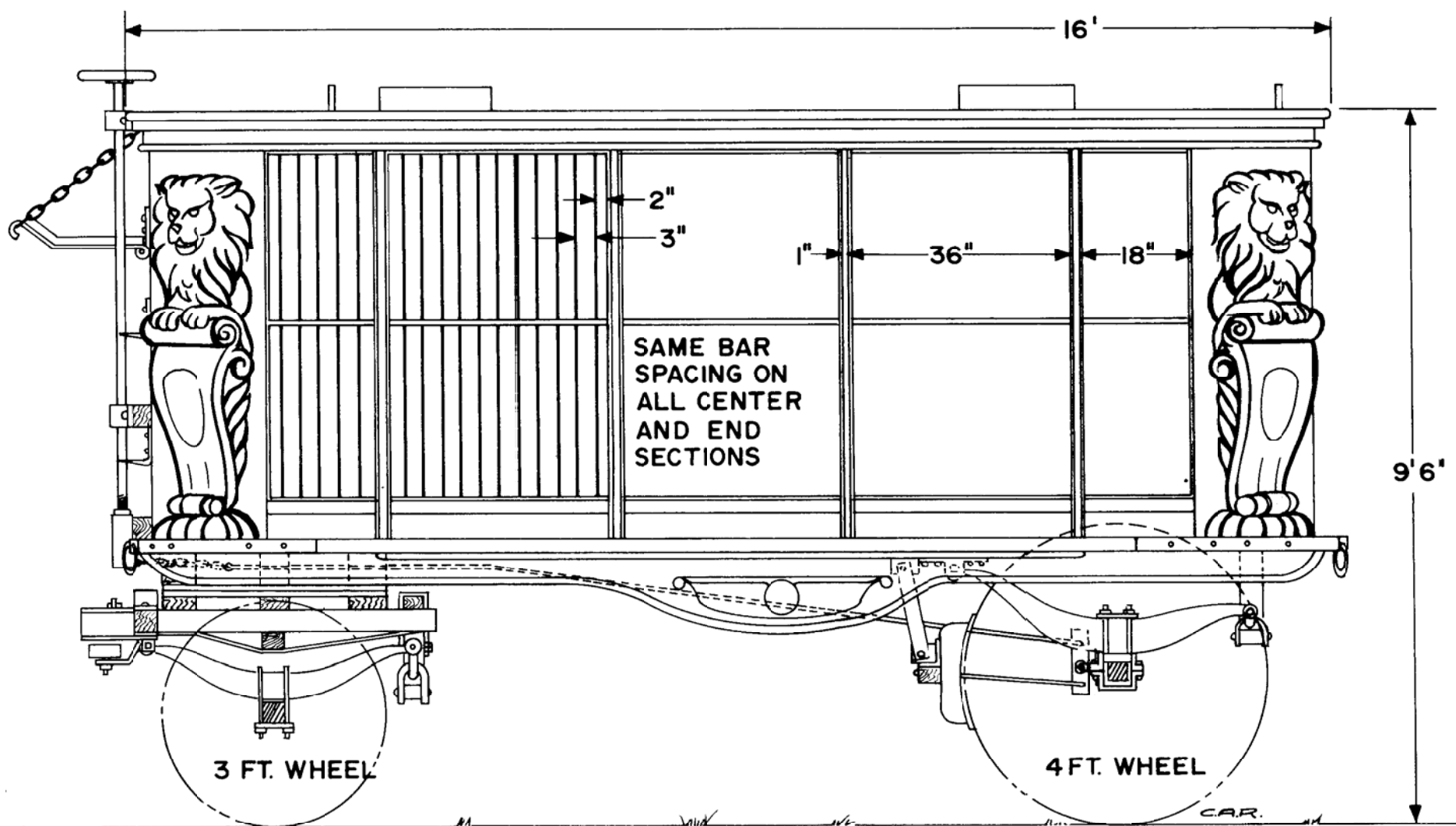
Pg 1 of 6

Circus Model Builders

Drawn By
Conrad A. Rousseau

DRAWING NUMBER

#0226



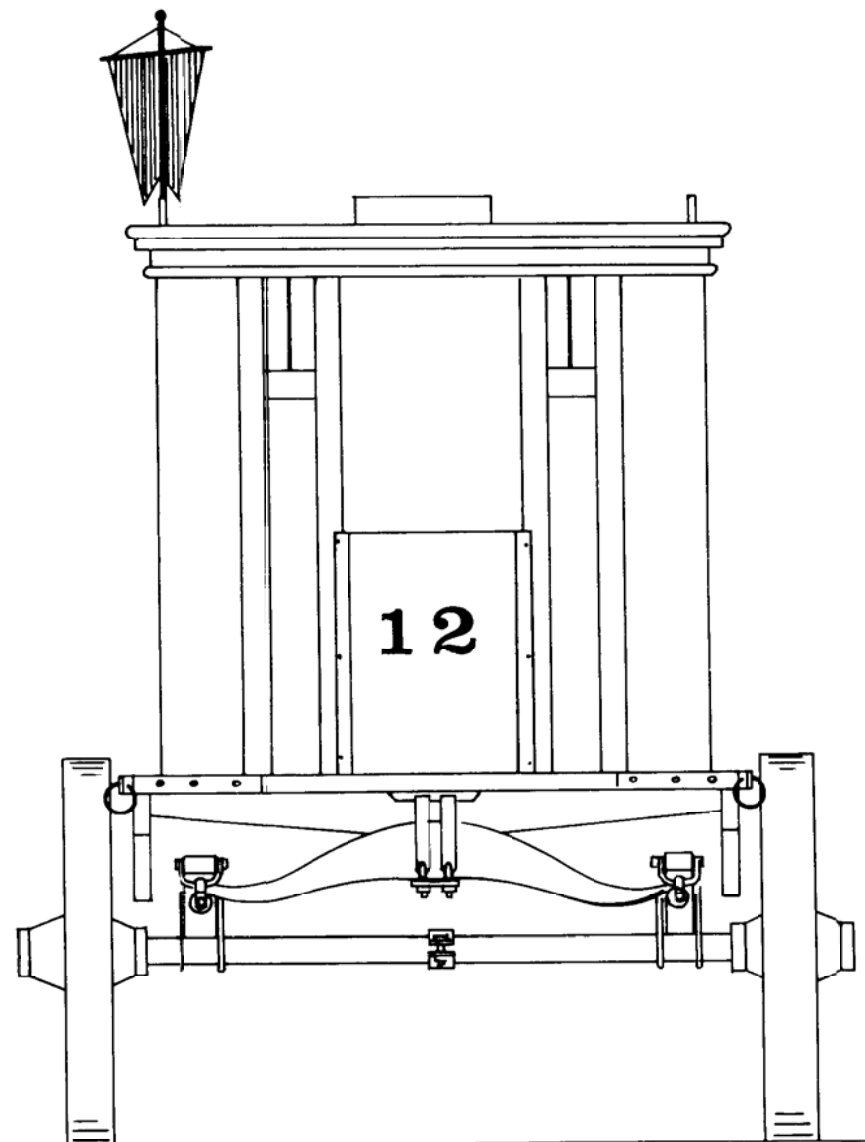
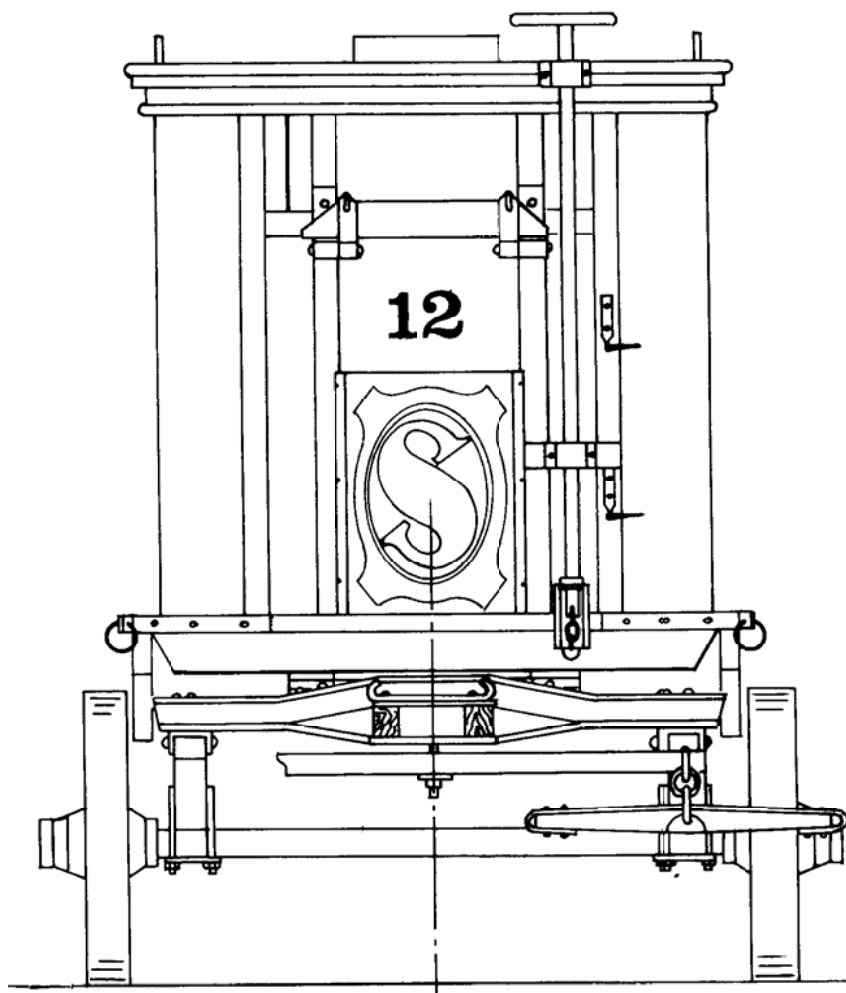
Sparks Circus Cage Wagons

Pg 2 of 6

SCALE: 1/2" = 1'

SCANNED & REVISED:
05/15/02

DRAWING NUMBER
#0226



**Sparks Circus
Cage Wagons**

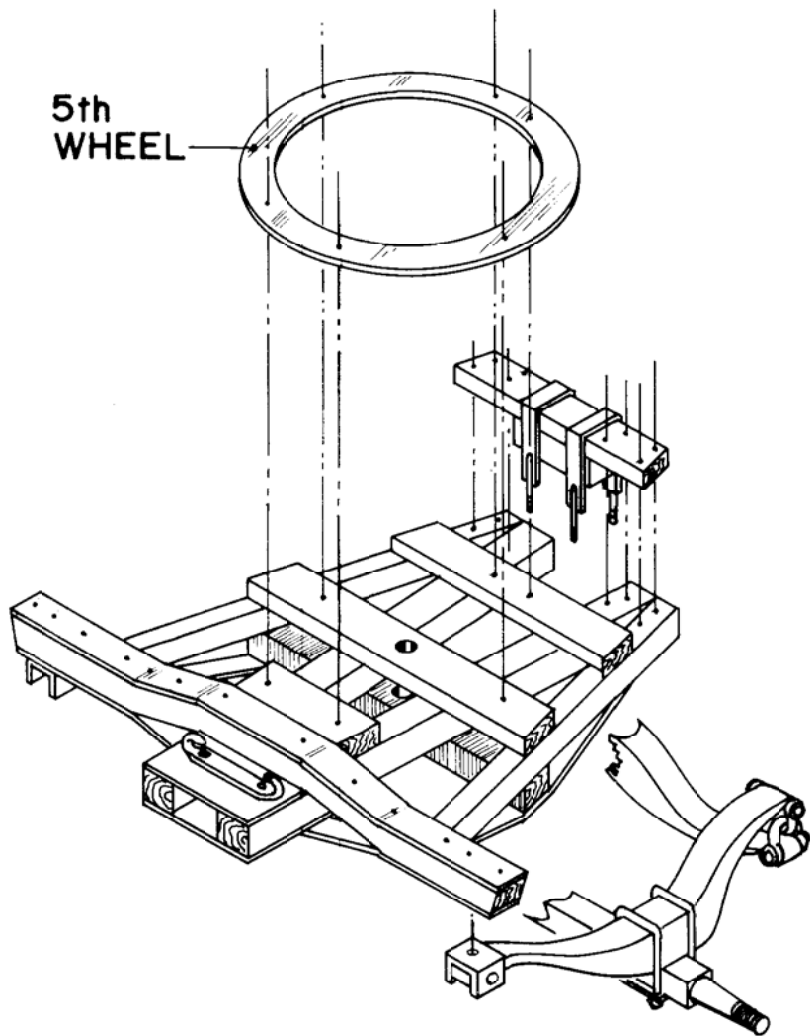
Pg 3 of 6

SCALE: 1/2" = 1'

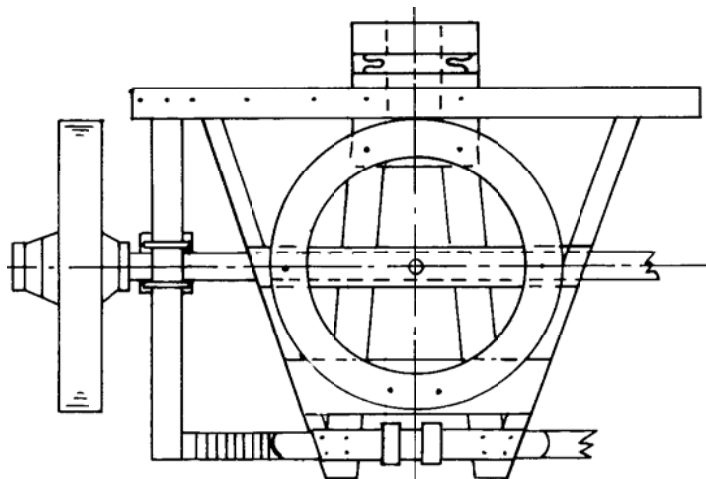
SCANNED & REVISED:
05/15/02

DRAWING NUMBER
#0226

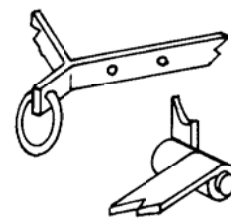
5th
WHEEL



FRONT UNDERGEAR EXPLODED VIEW



FRONT UNDERGEAR TOP VIEW

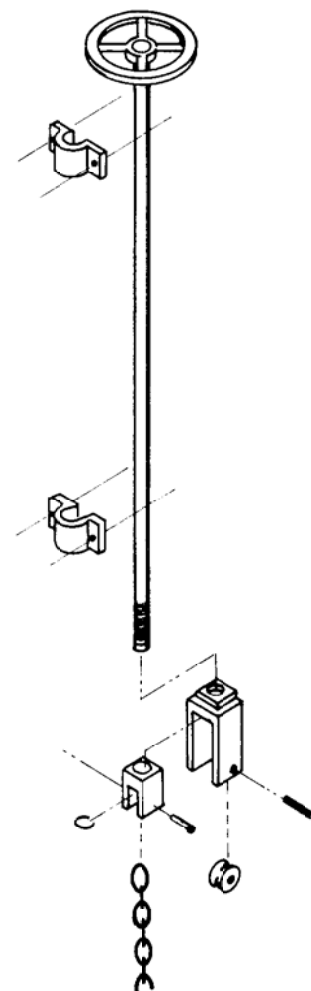


FOOTBOARD
HINGE

STEP



NOT TO SCALE



BRAKE ASSEMBLY

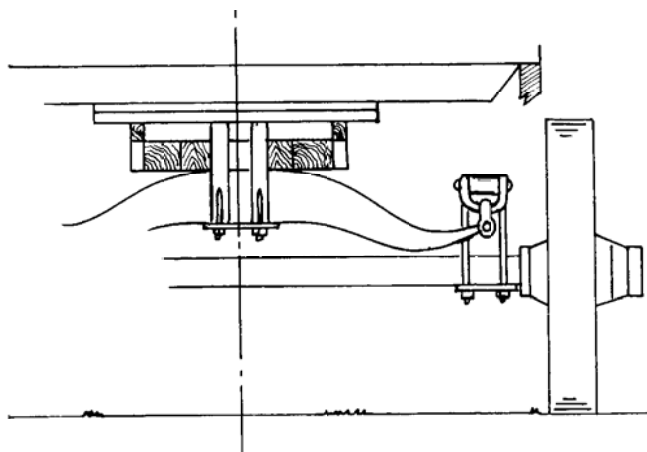
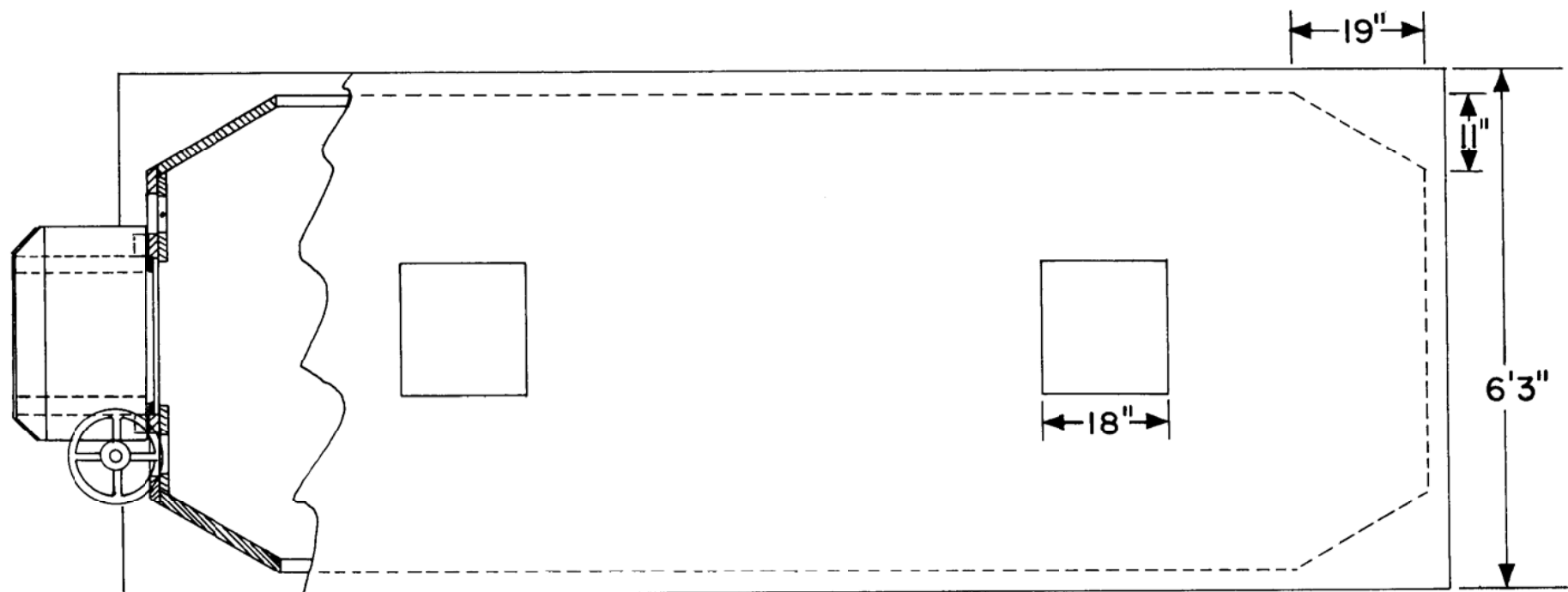
**Sparks Circus
Cage Wagons**

Pg 4 of 6

SCALE: 1/2" = 1'

SCANNED & REVISED:
05/15/02

DRAWING NUMBER
#0226



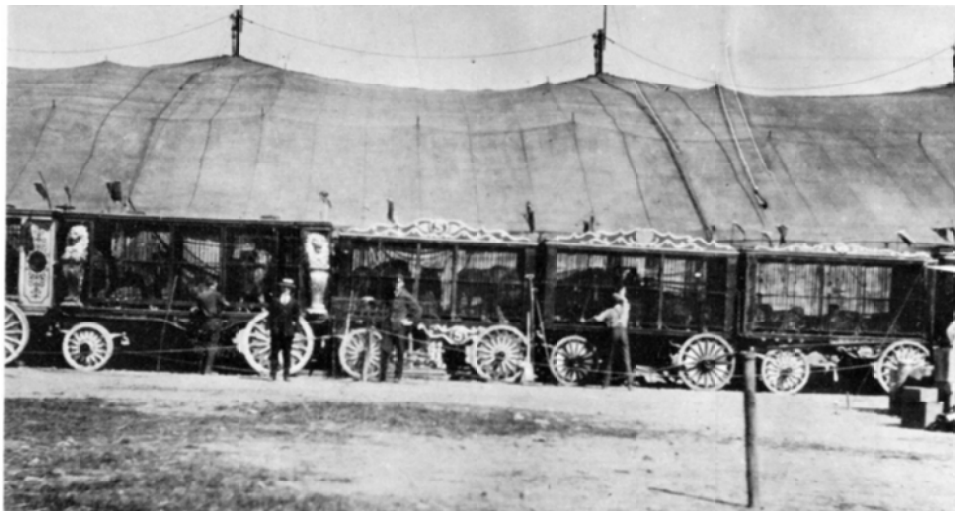
Sparks Circus Cage Wagons

Pg 5 of 6

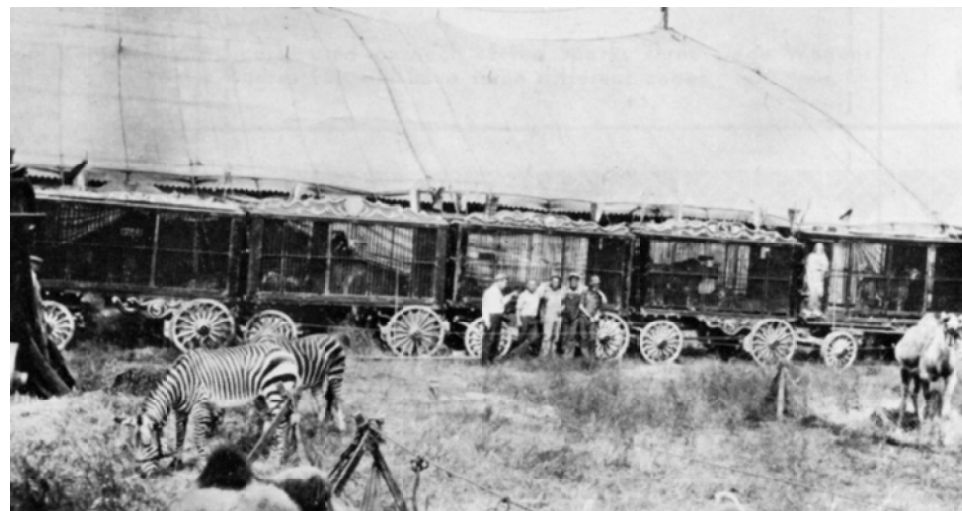
SCALE: 1/2" = 1'

SCANNED & REVISED:
05/15/02

DRAWING NUMBER
#0226



The photos to above and to the right were believed to have been taken on the 1928 Sparks Circus when the menagerie was corralled outside the big top. In the two photos part or all of eight of the nine cages on the show are visible. In the photo above the rear end of one of the three 16' cages with carved corners is shown on the extreme left. Just in front is one of the others.



The cage with the carved lion corners, also shown in parade and enlarged on page one, the third in this series, is at the extreme right of the above photo and is the only known picture of this wagon.



FIG. A



FIG. B



FIG. C



The sketches to the left show the three different corner figures used on each of the Sparks Three Cage Wagons. By using the same basic body and the above corner figures you will have three different cages.

Sparks Circus Cage Wagons