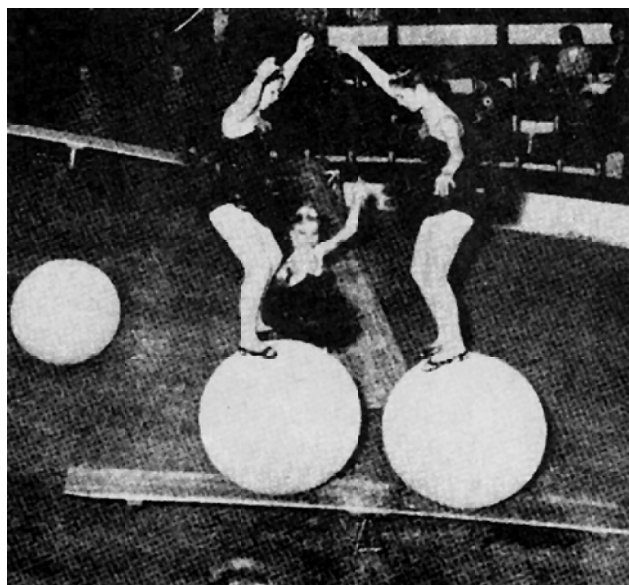




The picture to the right shows good detail of the front pipe arrangement. The picture to the left shows equipment used in Europe which is higher with longer ramps to accommodate the larger European rings. The remaining pictures are general scenes of the act.



Alexander's Rolling Globe Act

DATE: 1963

SCALE: 3/8" = 1'

SCANNED & REVISED:
01/14/04

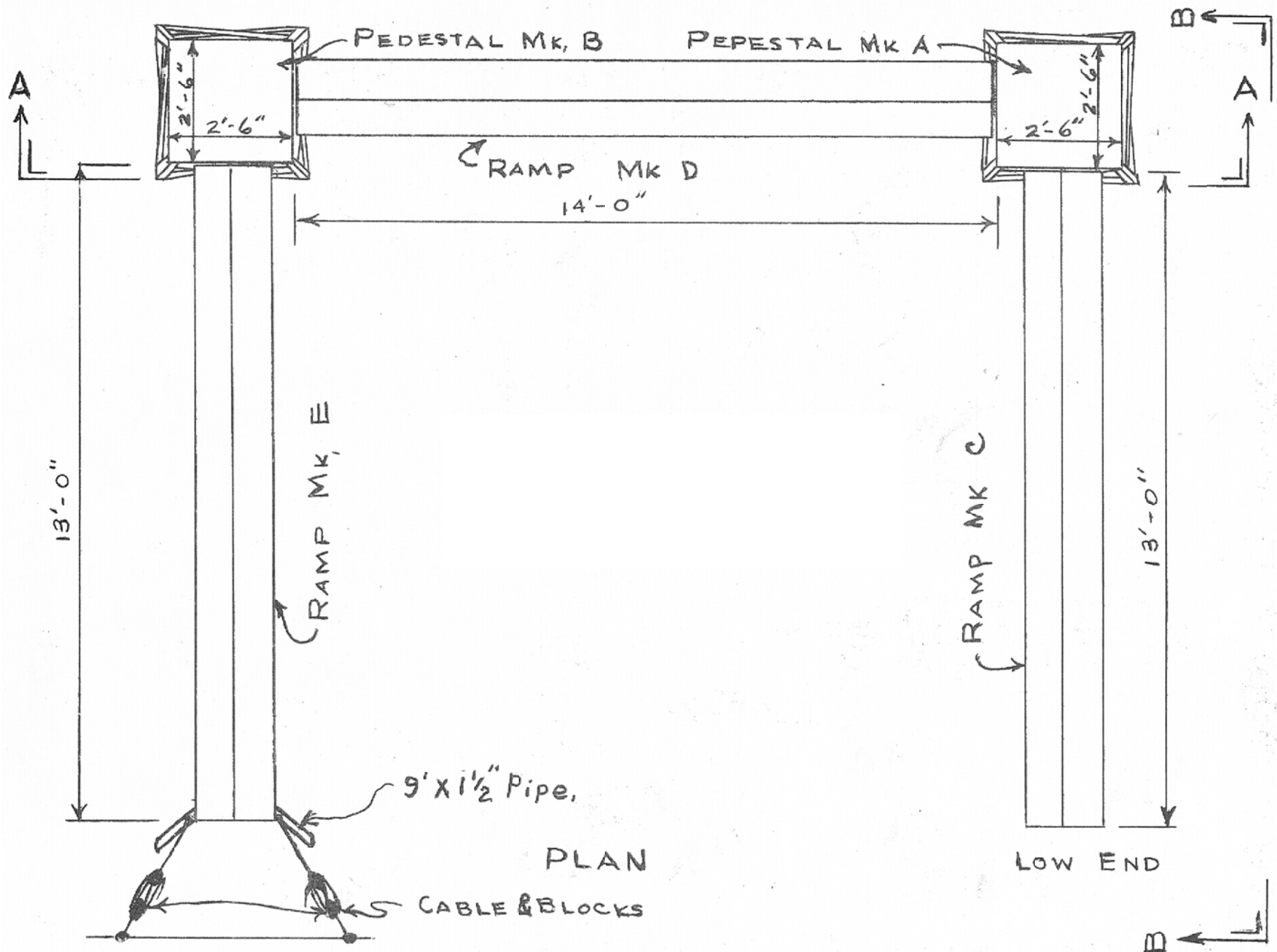
Pg 1 of 7

Circus Model Builders

Drawn By
John W. Lower

DRAWING NUMBER

#0170



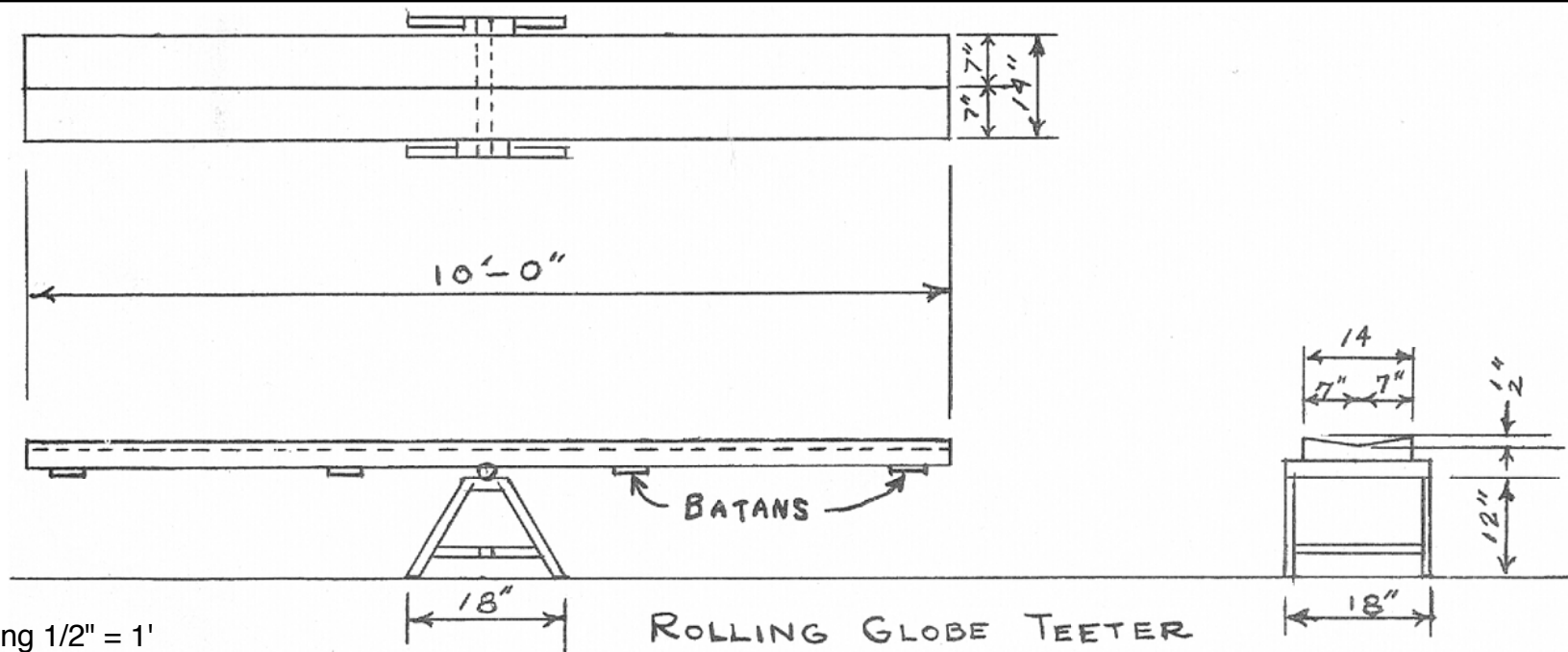
Alexander's Rolling Globe Act

Pg 2 of 7

SCALE: 3/8" = 1'

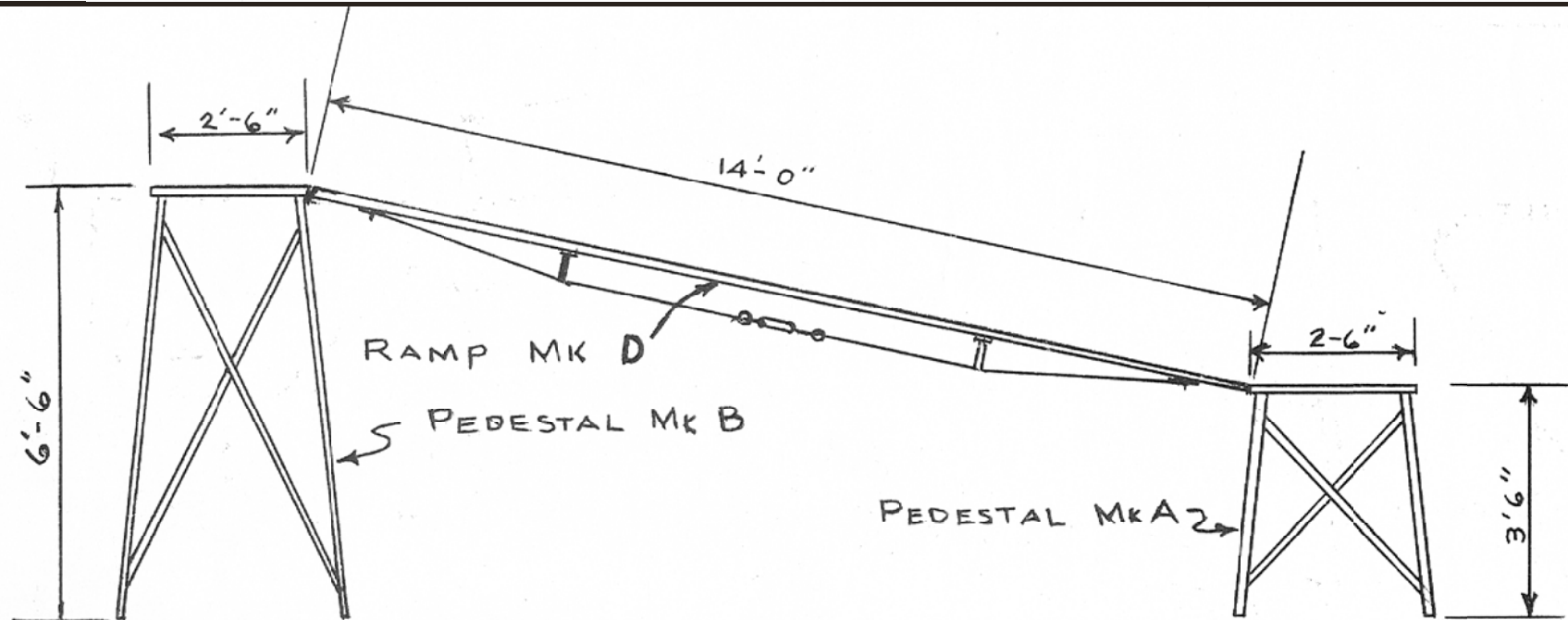
SCANNED & REVISED:
01/14/04

DRAWING NUMBER
#0170



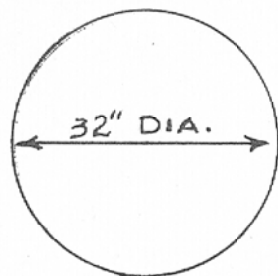
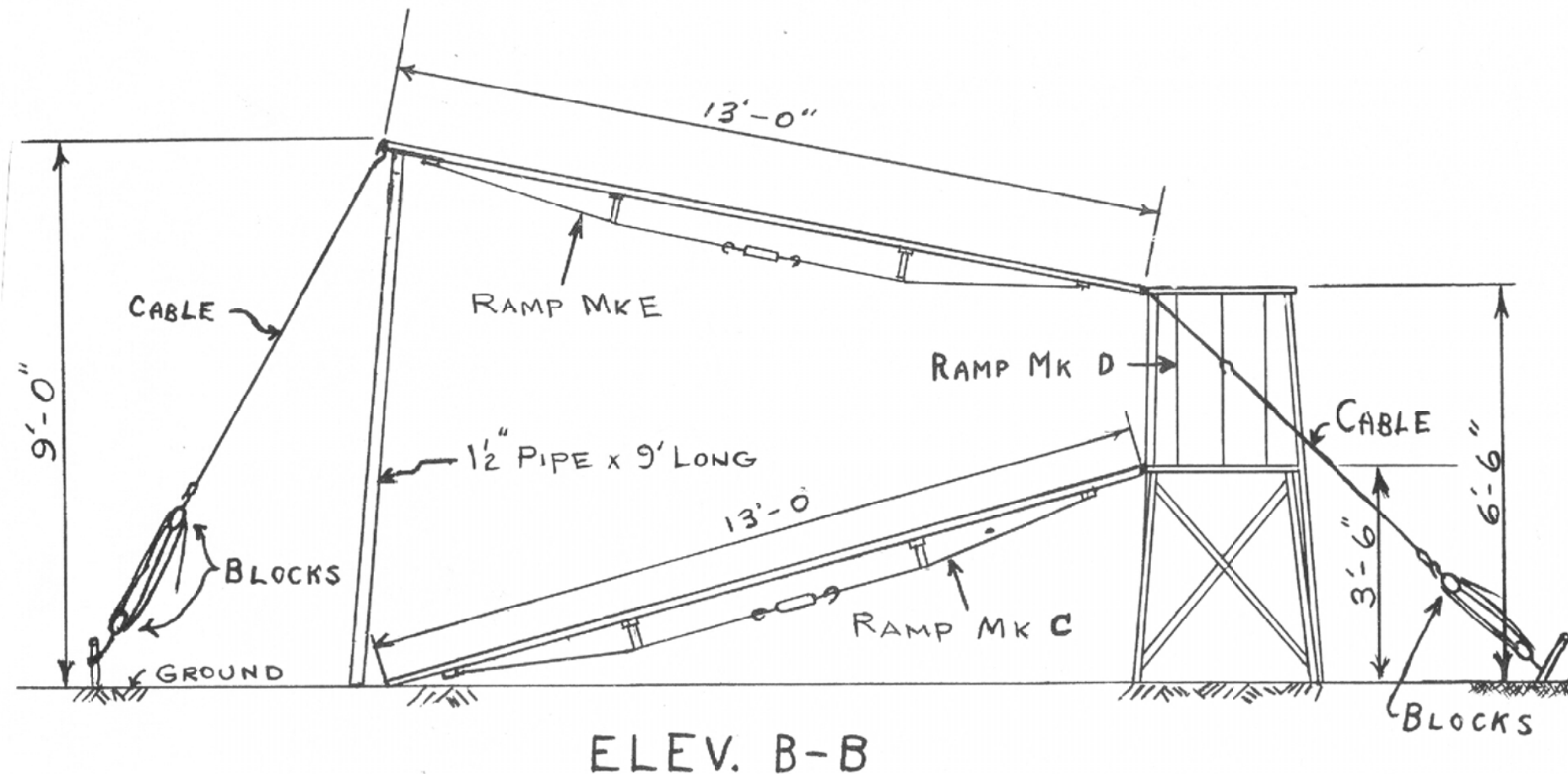
This Drawing 1/2" = 1'

ROLLING GLOBE TEETER



ELEV. A-A

Alexander's Rolling Globe Act



ROLLING GLOBE 3 REQ.
"SPHERE"

This Drawing 1/2" = 1'

© Copyright 2018 by Circus Model Builders, Inc.

Alexander's Rolling Globe Act

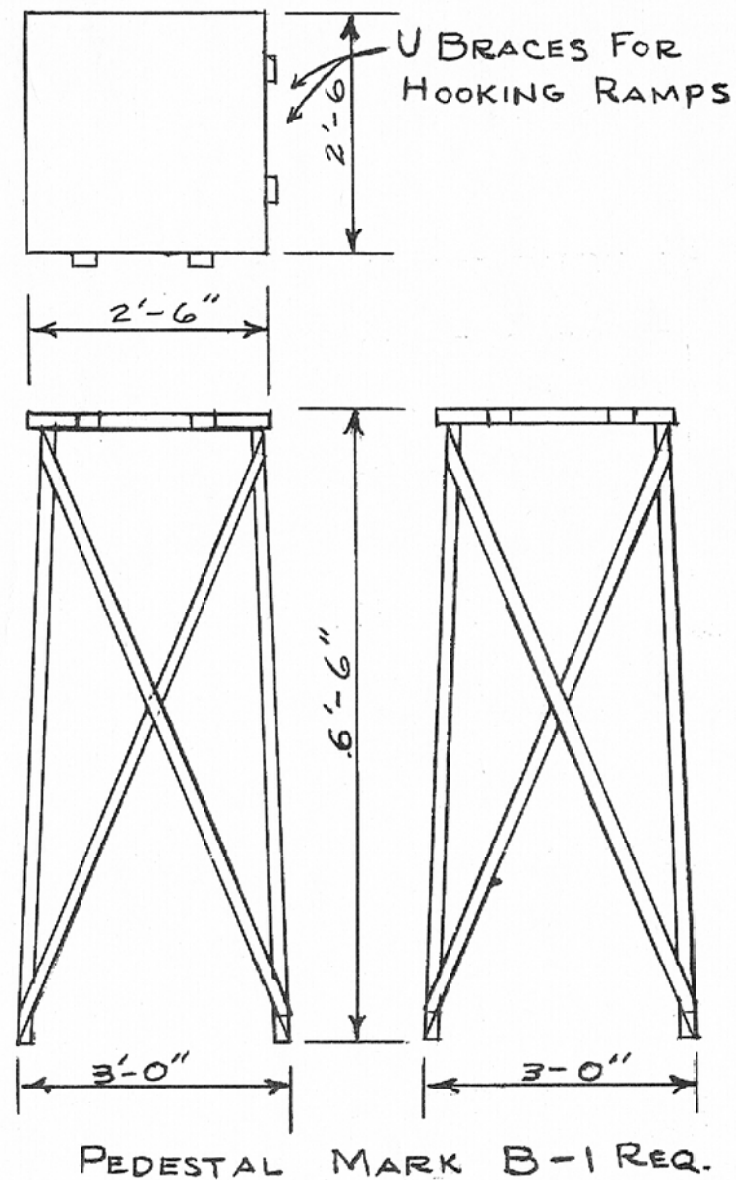
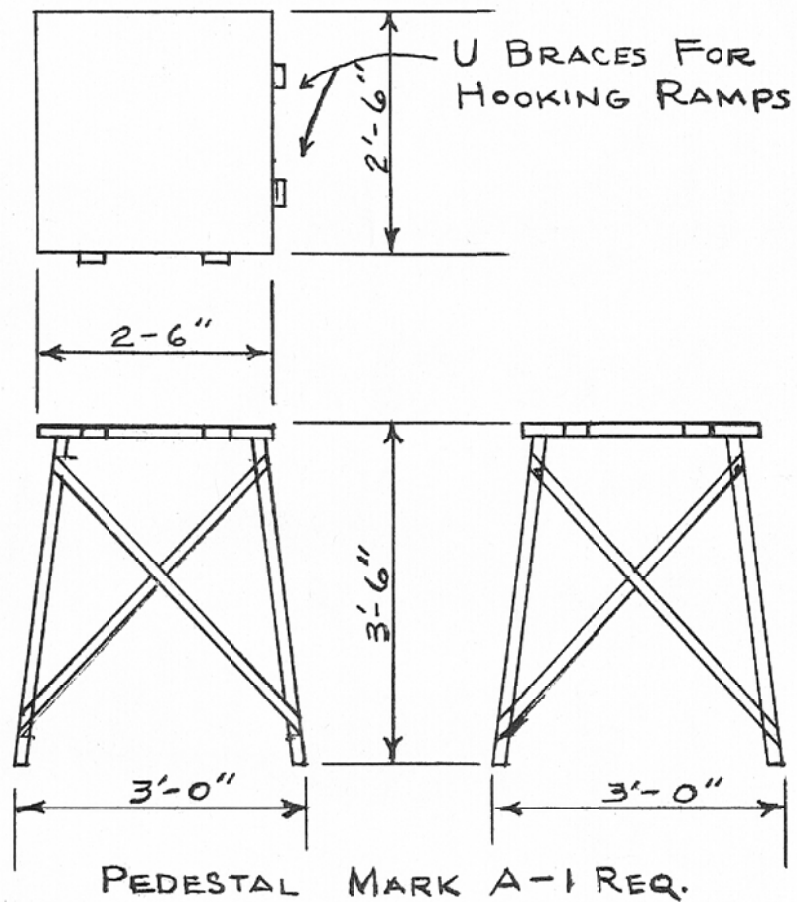
Pg 4 of 7

SCALE: 3/8" = 1'

SCANNED & REVISED:
01/14/04

DRAWING NUMBER

#0170



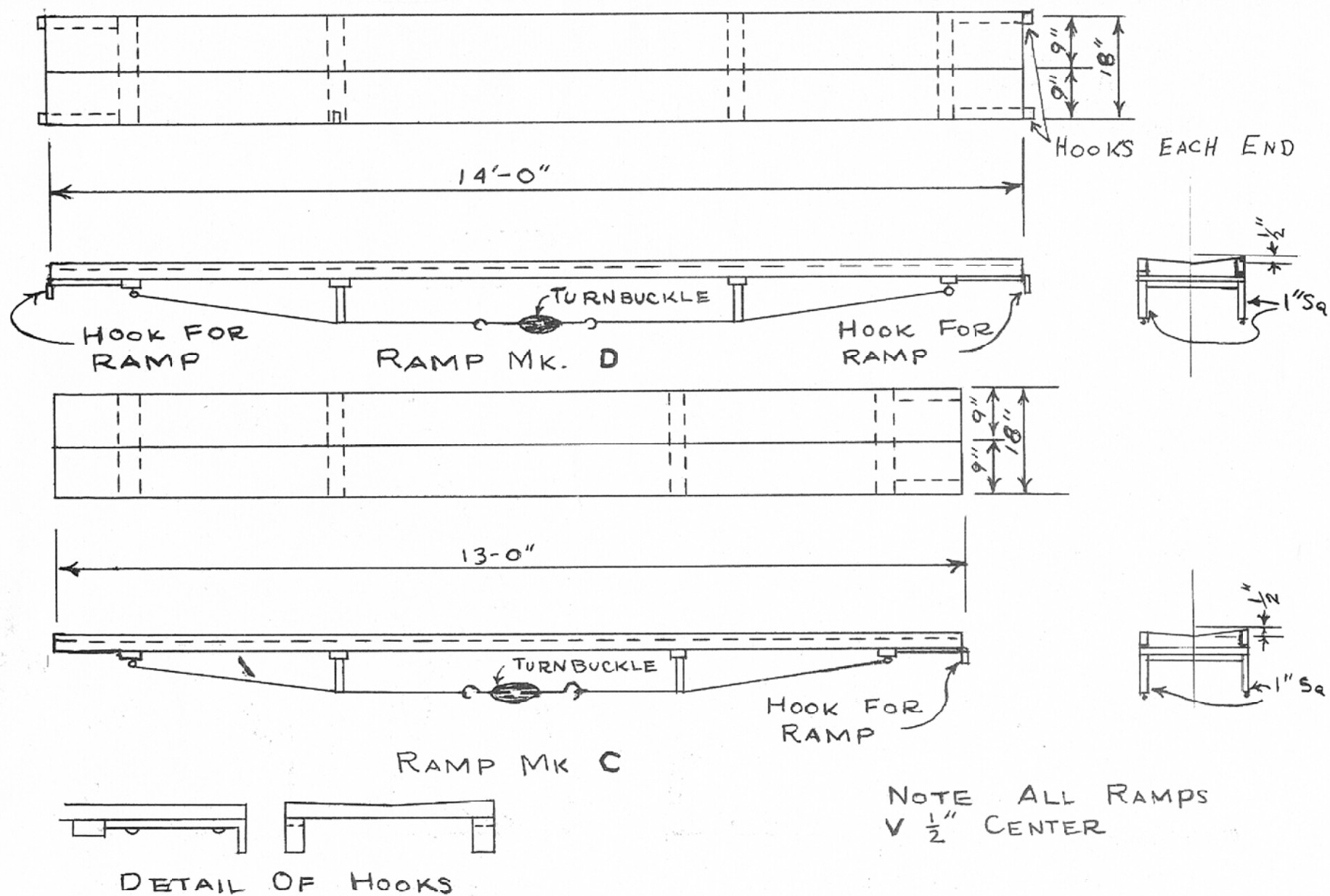
Alexander's Rolling Globe Act

Pg 5 of 7

SCALE: 1/2" = 1'

SCANNED & REVISED:
01/14/04

DRAWING NUMBER
#0170



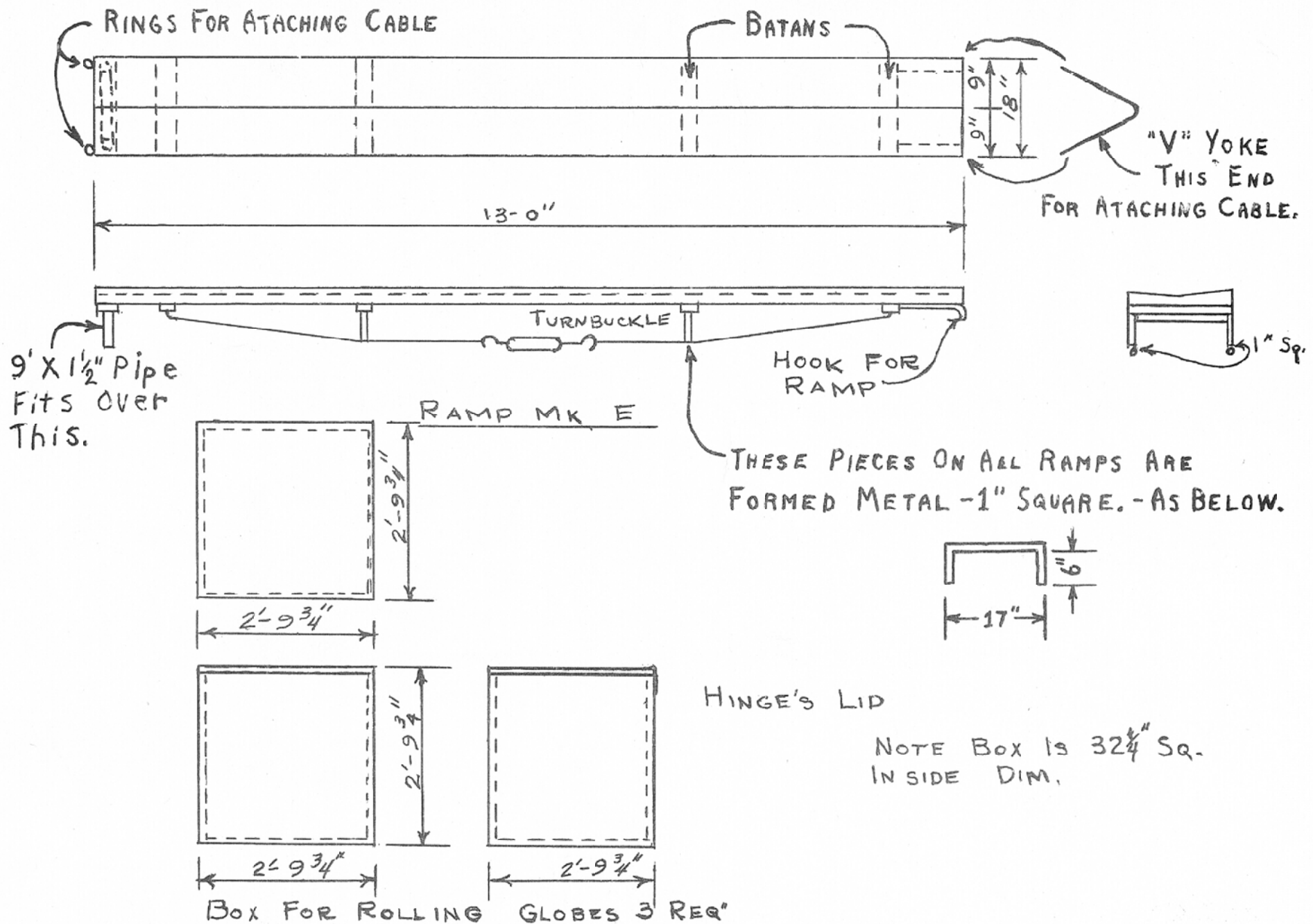
Alexander's Rolling Globe Act

Pg 6 of 7

SCALE: $\frac{1}{2}$ " = 1'

SCANNED & REVISED:
01/14/04

DRAWING NUMBER
#0170



Alexander's Rolling Globe Act