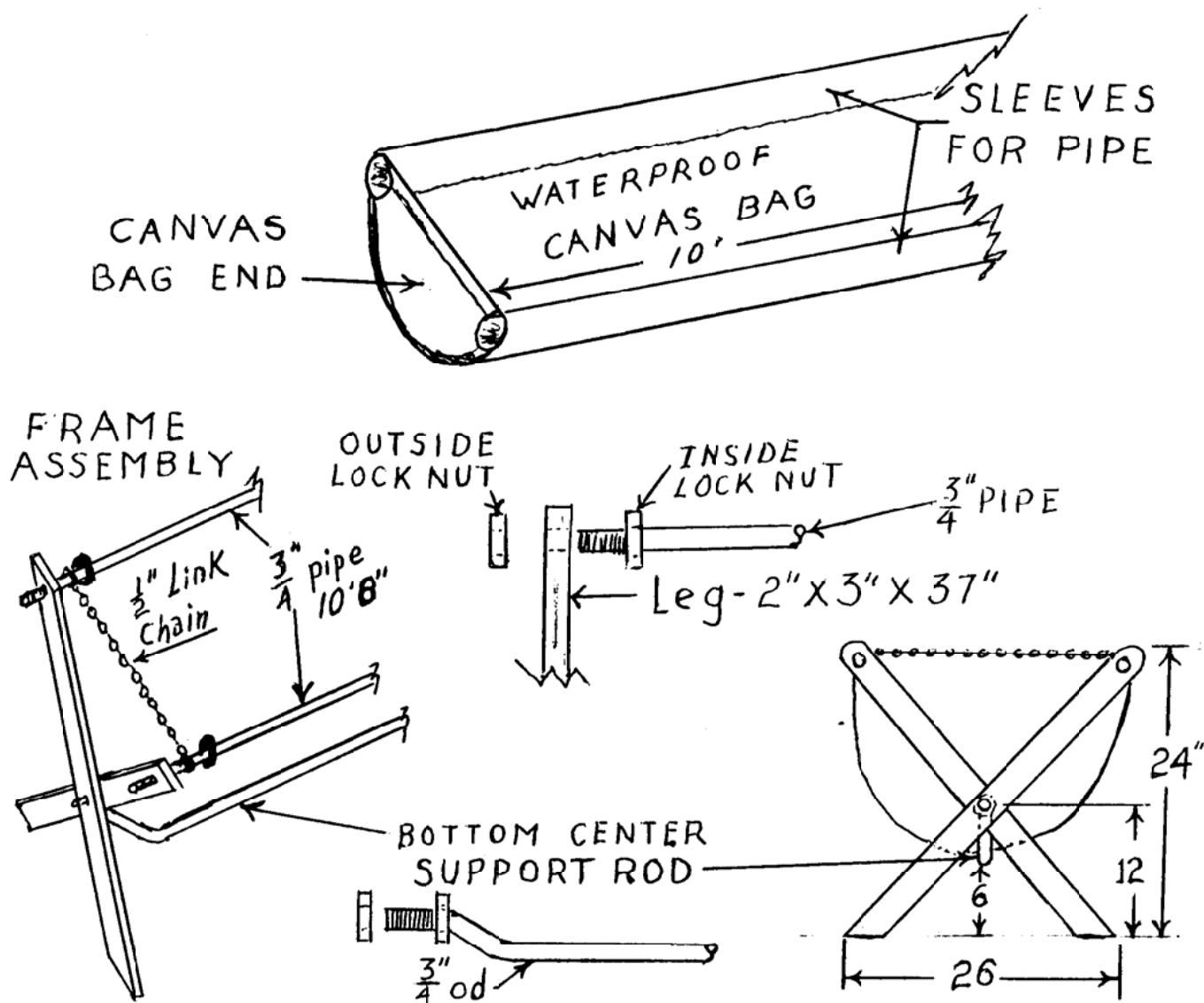


This time we are going to deal with something with which no traveling show, using horse power, could survive without. This is a watering trough for the horses. It was a canvas bag which could be collapsed and carried easily. I hope the drawings are rather self explanatory. The bag was sewn up and the rods were then put through the sleeve openings in the canvas. The outside loops of the chain were slid over pipe ends. After this, the lock nuts were threaded down on pipe to lock pipe on inside of end legs. Then the outside nuts were put on to completely lock pipe on leg frame. Finally the bottom brace was put on in similar fashion with lock nuts on inside and outside.

The only thing left to do was to set it up and fill with water. The materials you use may depend on your scale and/or your skill. Anyway, have fun building several for all the horses.



### Circus Lot Props Canvas Water trough

DATE: None

SCALE: 3/4" = 1'

SCANNED & REVISED:  
04/20/04

Pg 1 of 1

## Circus Model Builders

Drawn By  
David L. Hall, CMB 1055

DRAWING NUMBER

#0348