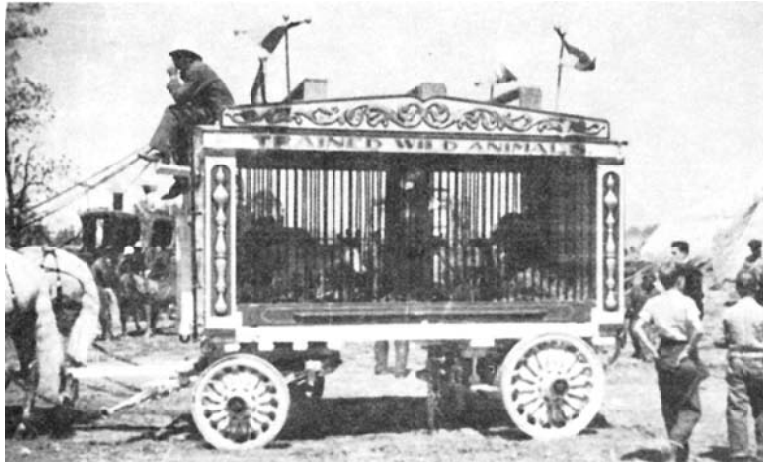
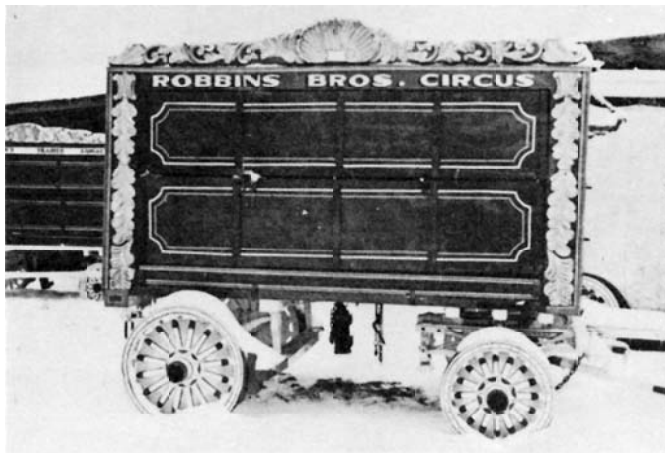




Above - Three of Robbins Bros. Circus five cages waiting to be moved into the menagerie top in 1938. [Carver photo]



Right - Ready for the "Spec" - Robbins Bros. No. 15, opening day in Kokomo, IN, 1938. [Robert Danner Photo]



Left - Robbins Bros. Cage No. 14 seen here at its snow covered winter quarters. Originally built for the Christy Show, then sold to Cole Bros. in 1935. Then used on the Robbins Show in 1938 then back to Cole in 1939.

Our cage wagon plans deal with Wagons No. 14 and 15. However, in this article we will be hearing of wagon Nos. 10, 14, 15, 16 and 17. All of these cages were of similar design and size and all very colorful. As can be seen from the photos, Wagons No. 15 and 16 had seats on top for a band or parade riders; while the others were plain. Wagon No. 14 is shown with the panel sides in place. All of these cages used similar side panels in transit from town to town. Mr. Conover's models also are shown with the panels in place on several of the photos.

As to the colors of the wagons, they apparently were plain color backgrounds with bright color trim. Wagon No. 14 was painted red, while No. 15 was painted white. The wheels were of contrasting colors with white background, very brightly painted. As seen in the photos, the wagons usually carried parade banners n top of the wagon.

Mr. Conover notes that he recently discovered that there must have been a switch of some of these wagons in the first couple of days on the road. Cage No. 16 was dropped and another cage, No. 10, was used in its place. Both cage wagons were quite similar however. Al admits this had him fooled for for several years until he got to examing Mr. Robert Good's railroad shots and then comparing them with Robbins Bros. Winter Quarters and opening day photos of Bob Danner and George Piercy's. It was also found in the Winter Quarters photos that there were a number of wagons which carried Robbins titles, including a cross cage, No. 17, which did not go on the road unless it was one of those that joined Robbins after the Cole Show closed. Quite a few cages went over there with the Clyde Beatty Cat Act, along with the Cole Hippo Cage (originally on the Robbins Show, now at Baraboo) and several baggage wagons.

Robbins Bros. Circus Cage Wagon No. 14 & 15

DATE: 1938

SCALE: 1/2" = 1'

SCANNED & REVISED:
04/15/04

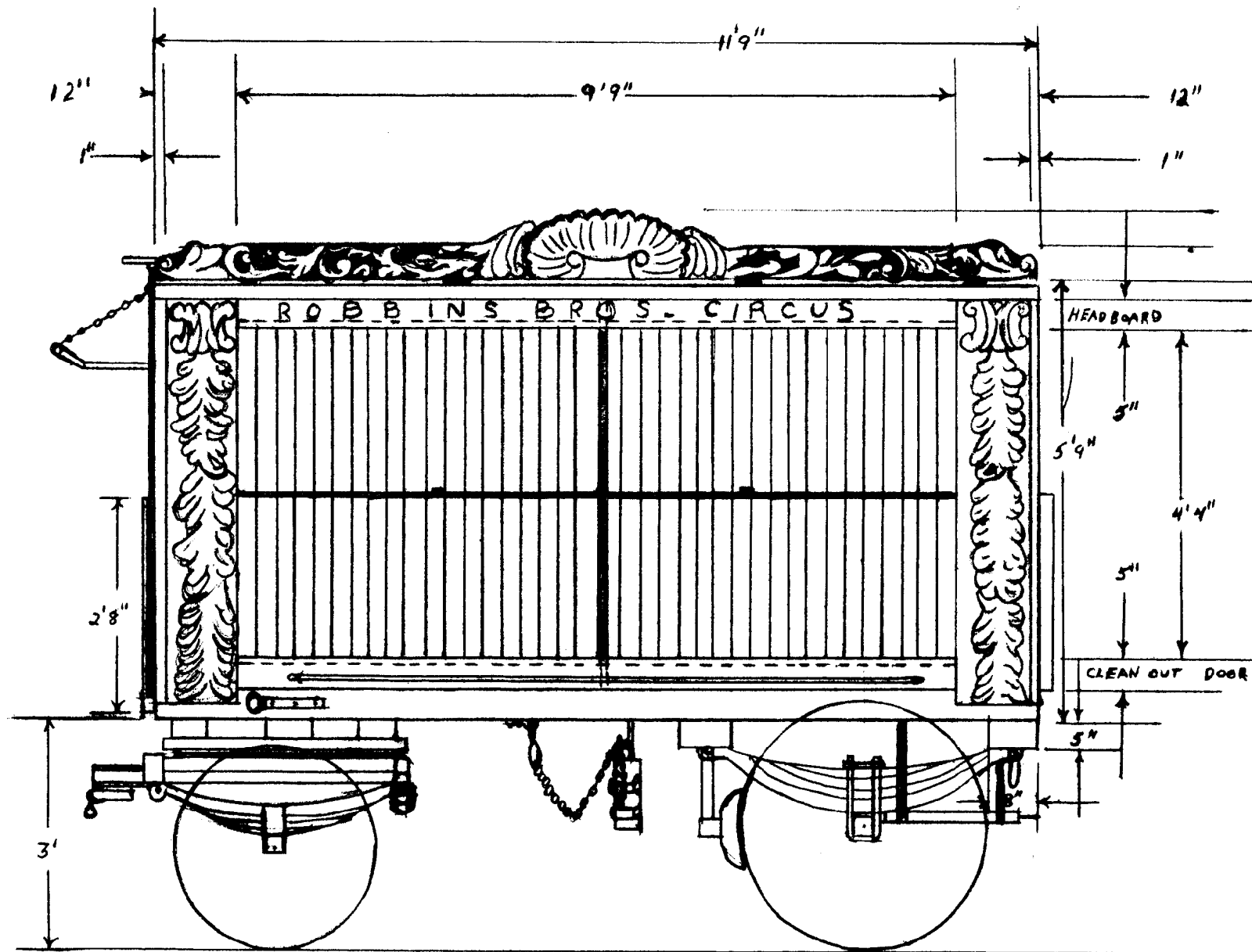
Pg 1 of 4

Circus Model Builders

Drawn By
Albert Conover

DRAWING NUMBER

#0184



Notes:
 Cage Painted Red
 Front Wheels 32" Diameter
 Rear Wheels 39" Diameter

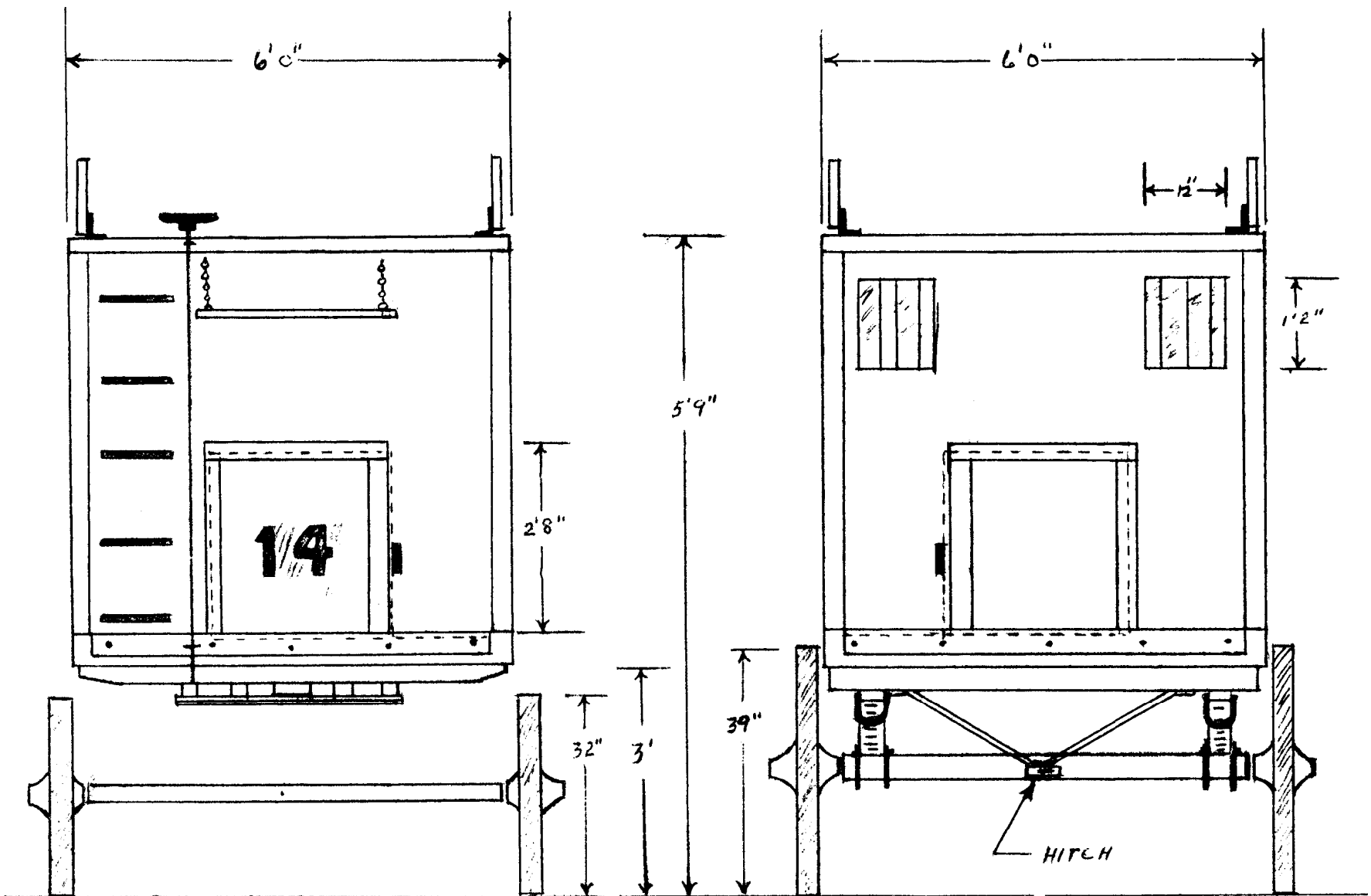
**Robbins Bros. Circus
 Cage Wagon No. 14 & 15**

Pg 2 of 4

SCALE: 1/2" = 1'

SCANNED & REVISED:
 04/15/04

DRAWING NUMBER
#0184



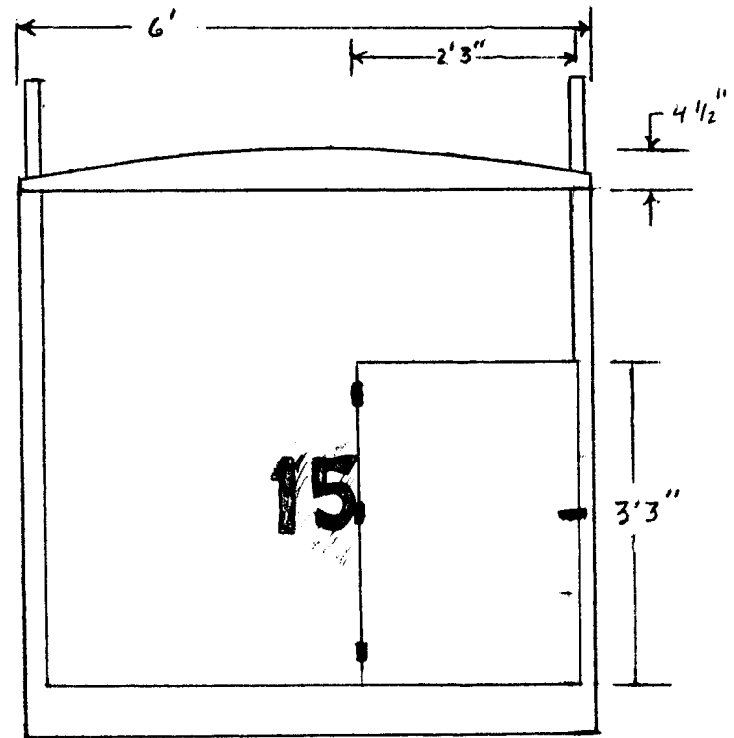
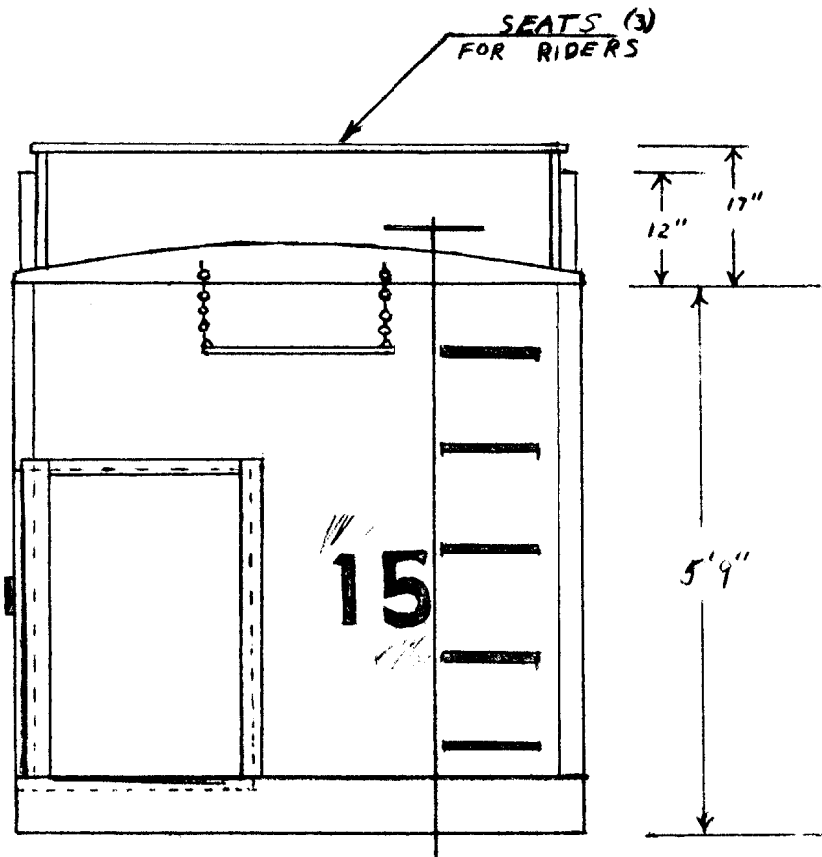
**Robbins Bros. Circus
Cage Wagon No. 14 & 15**

Pg 3 of 4

SCALE: 1/2" = 1'

SCANNED & REVISED:
04/15/04

DRAWING NUMBER
#0184



Robbins Cage No. 15 as seen under the Menagerie Top on opening date, Kokomo, IN, 1938. [Robert Danner photo]

**Robbins Bros. Circus
Cage Wagon No. 14 & 15**

Pg 3 of 4

SCALE: 1/2" = 1'

SCANNED & REVISED:
04/15/04

DRAWING NUMBER
#0184