

**Right Side Elevation**

This plan is Buffalo Bill's steam powered light plants of the year 1896. There were two of them on the show and they were named "BUFFALO BILL" and "NATE SALISBURY". These plants were so fancy and were thought so much of that they were used in the parades. This was of course before the days of the gasoline or diesel engines and steam was the big thing then. My very good friend, the late Bill Woodcock was of the opinion that these plants were built from fire engines with the generators replacing the water pumps.

These drawings are all in the scale of 1/2" to 1 foot, unless otherwise designated. Page 1 gives the right side view. Page 2 has the front and rear elevations with the measurements and the enlarged wheel drawing gives detail of striping on wheels. Page 3 gives the top elevations, one of the boiler, engine and generator and the other of the frame and cross braces and running gear. Page 4 gives an angular detail of the front end - not to scale and detail of wheels. On front end sketch, spring and fifth wheel parts are indicated by letters. Page 4 also has a breakdown of spring, axle and fifth wheel assembly. You will note that there is only one front spring held to forward cross members with U bolts. The swivel of the axle is acquired by the use of a bolt through E and plate F on lower side of axle.

**Buffalo Bill's Wild West Show  
Steam Light Plant**

DATE: 1896

SCALE: 1/2" = 1'

SCANNED & REVISED:  
01/01/2006

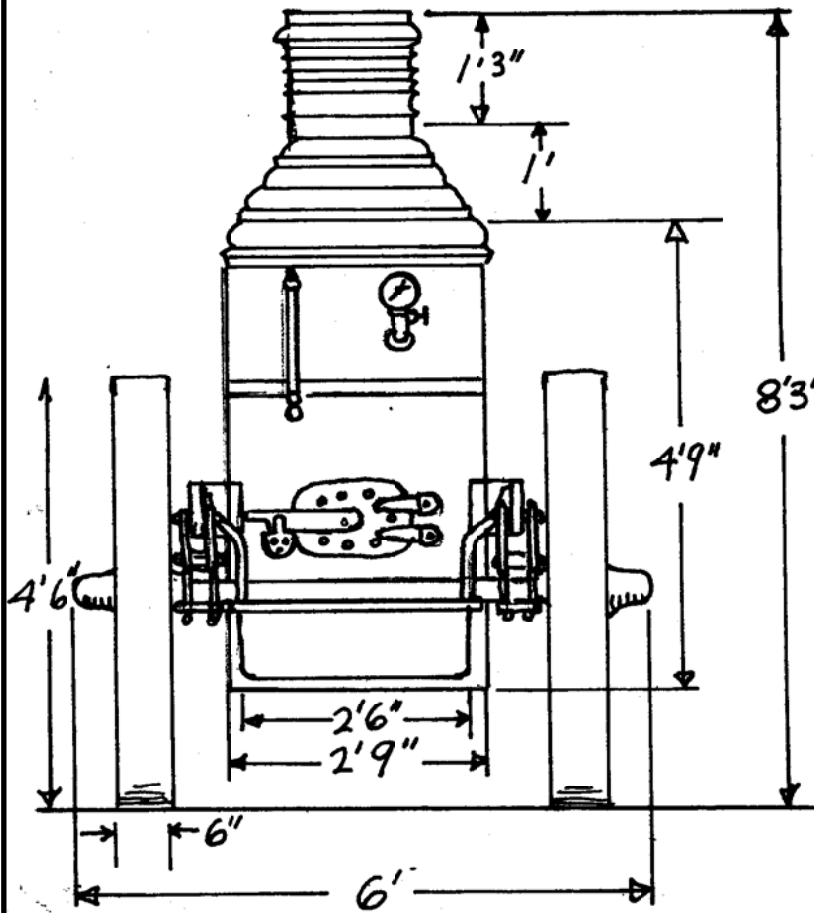
Pg 1 of 4

**Circus Model Builders**

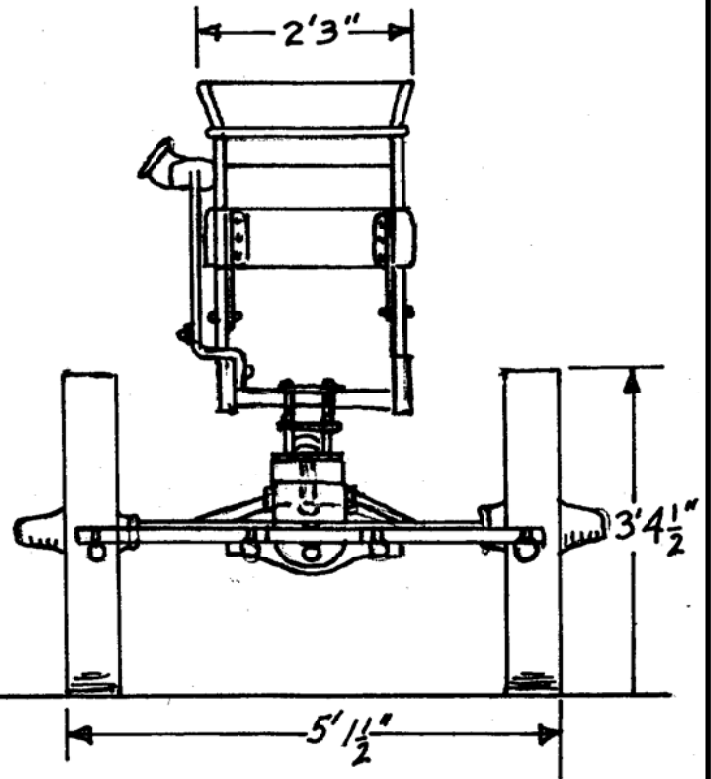
Drawn By  
Charles Lockier

DRAWING NUMBER

**#0200**



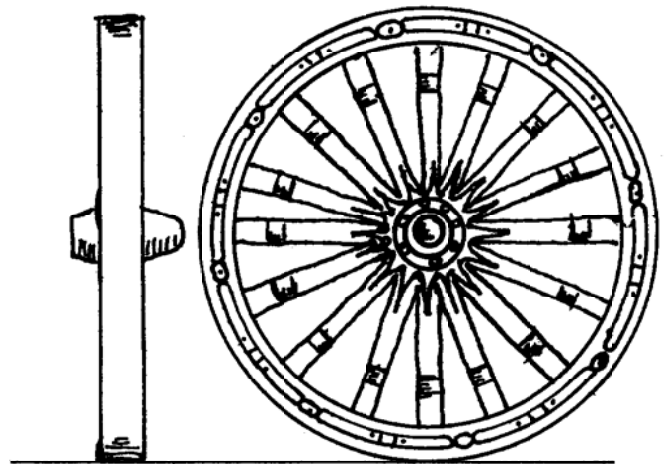
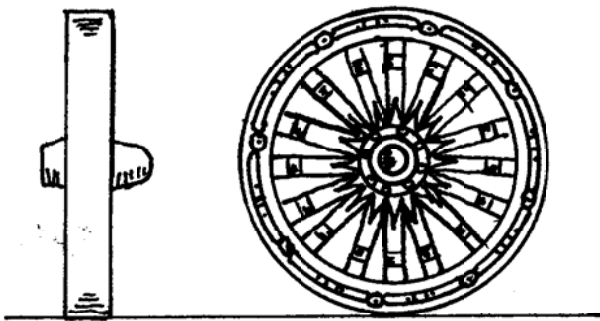
Rear Elevation



Front Elevation

WHEELS REGULAR SCALE

1/2 INCH = 1 FOOT



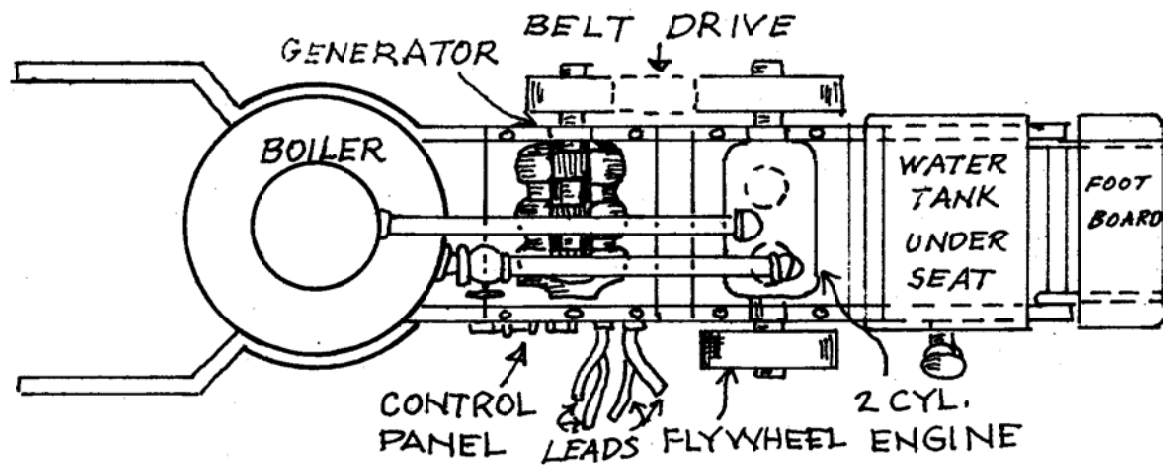
**Buffalo Bill's Wild West Show  
Steam Light Plant**

Pg 2 of 4

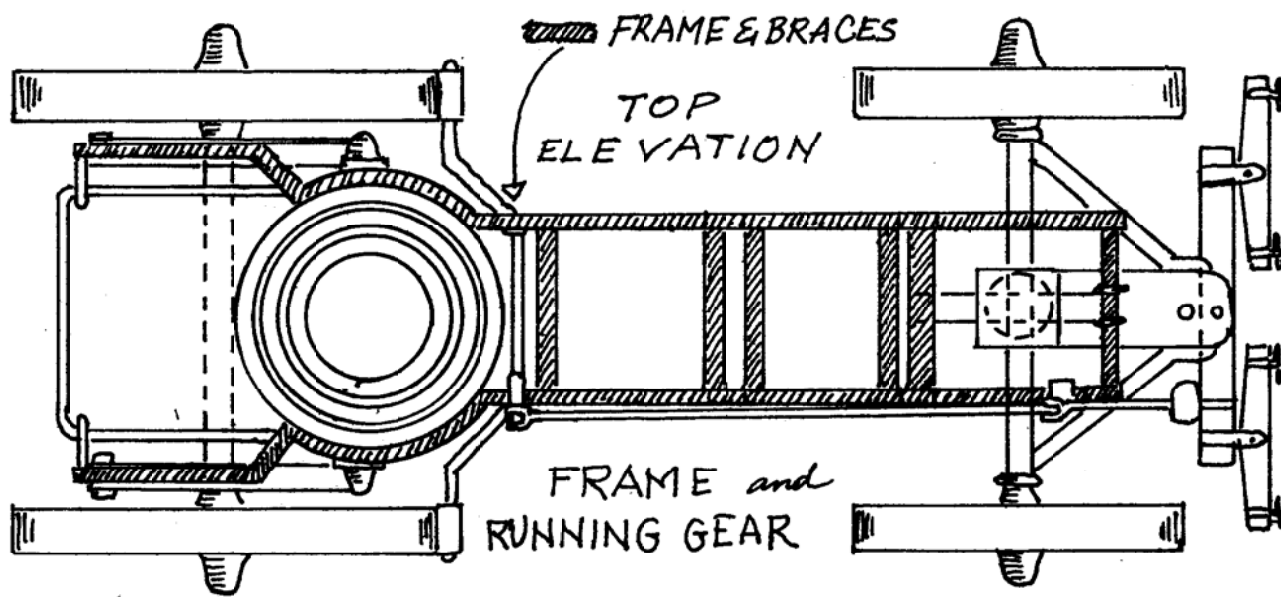
SCALE: 1/2" = 1'

SCANNED & REVISED:  
01/01/2006

DRAWING NUMBER  
**#0200**



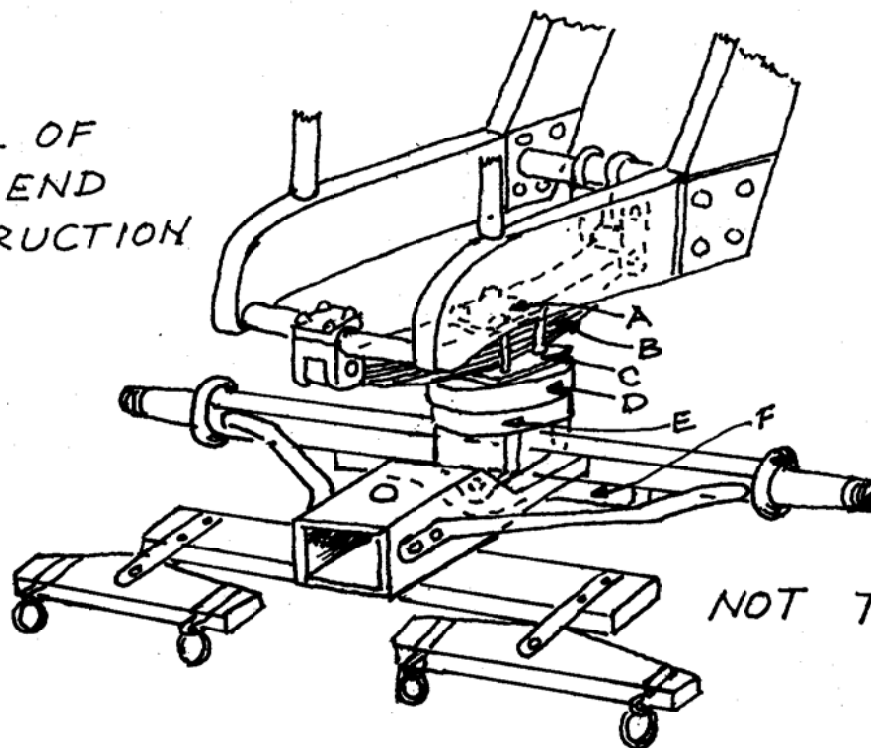
TOP ELEVATION SHOWING STEAM ENGINE & GENERATOR



FRAME and  
RUNNING GEAR

## Buffalo Bill's Wild West Show Steam Light Plant

DETAIL OF  
FRONT END  
CONSTRUCTION

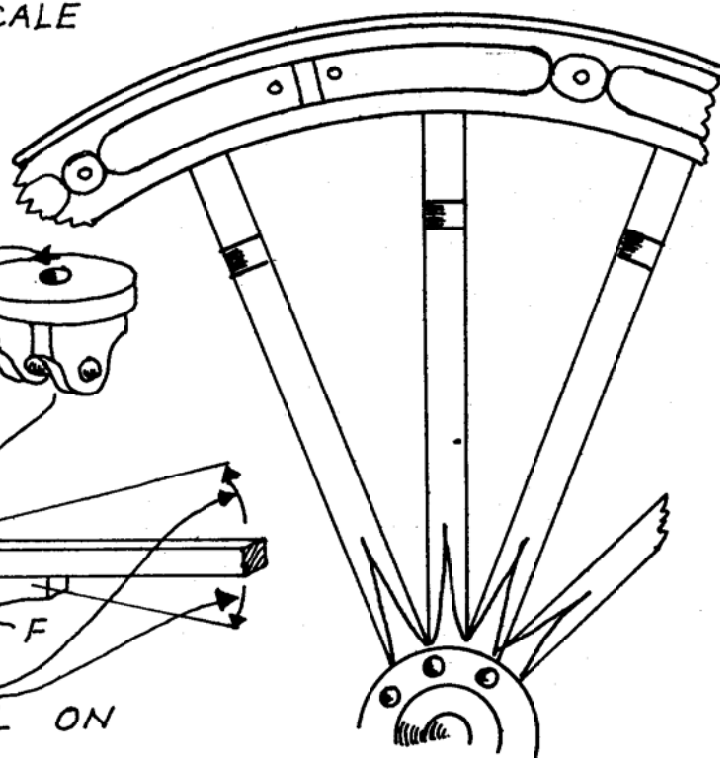
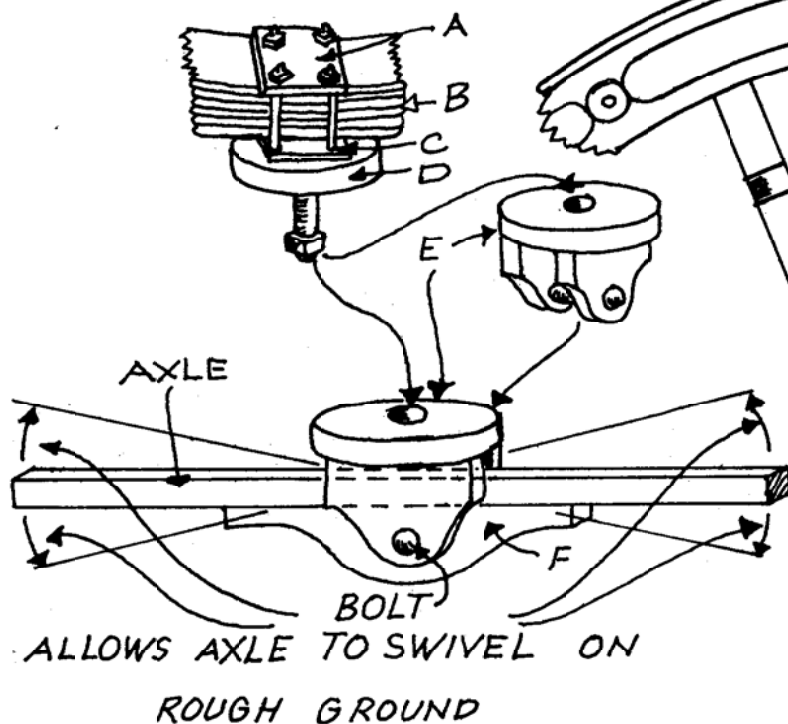


NOT TO SCALE

BREAKDOWN OF  
FRONT END ASSEMBLY

ENLARGED WHEEL  
DETAIL

DRAWINGS NOT TO SCALE



**Buffalo Bill's Wild West Show  
Steam Light Plant**