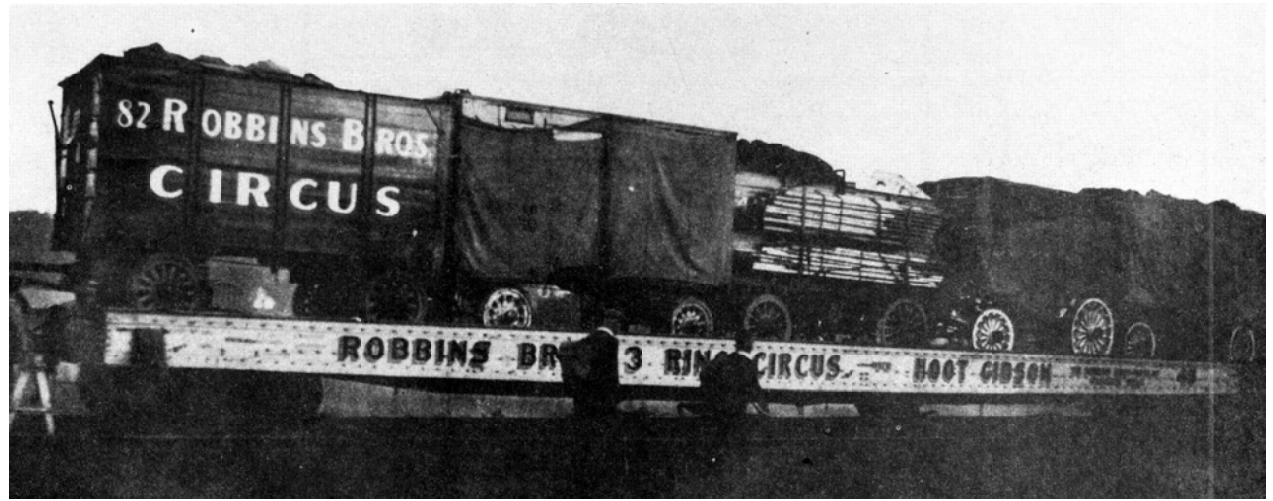




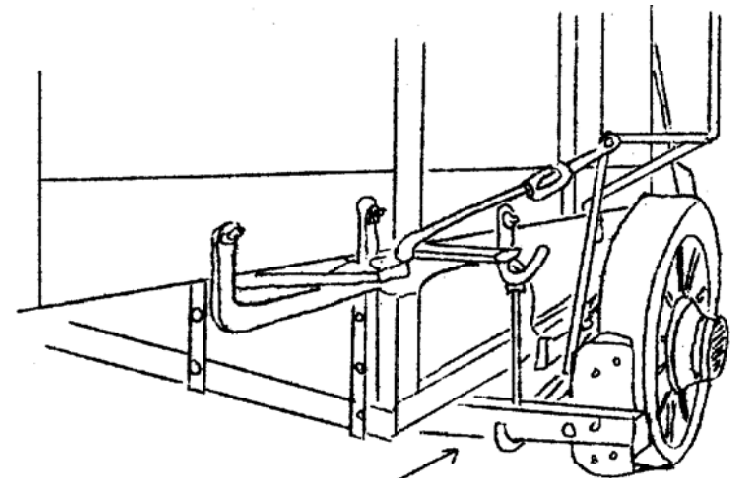
Front and side view of Robbins Bros. Circus Side Show Wagon No. 40 taken in Peru, Indiana in 1962. [Al Conover photo]



Wagon No. 40 loaded on flat car. Wagon is loaded directly after Red Ticket wagon and has side poles on side. Photo taken in Rutland, Vermont. [M. J. Allaire collection]



Rear view of Wagon No. 40 taken in Peru, Indiana in 1962. [Al Conover photo]



Brake Detail

**Robbins Bros. Circus
Side Show Baggage Wagon No. 40**

DATE: None

SCALE: 1/2" = 1'

SCANNED & REVISED:
04/25/2006

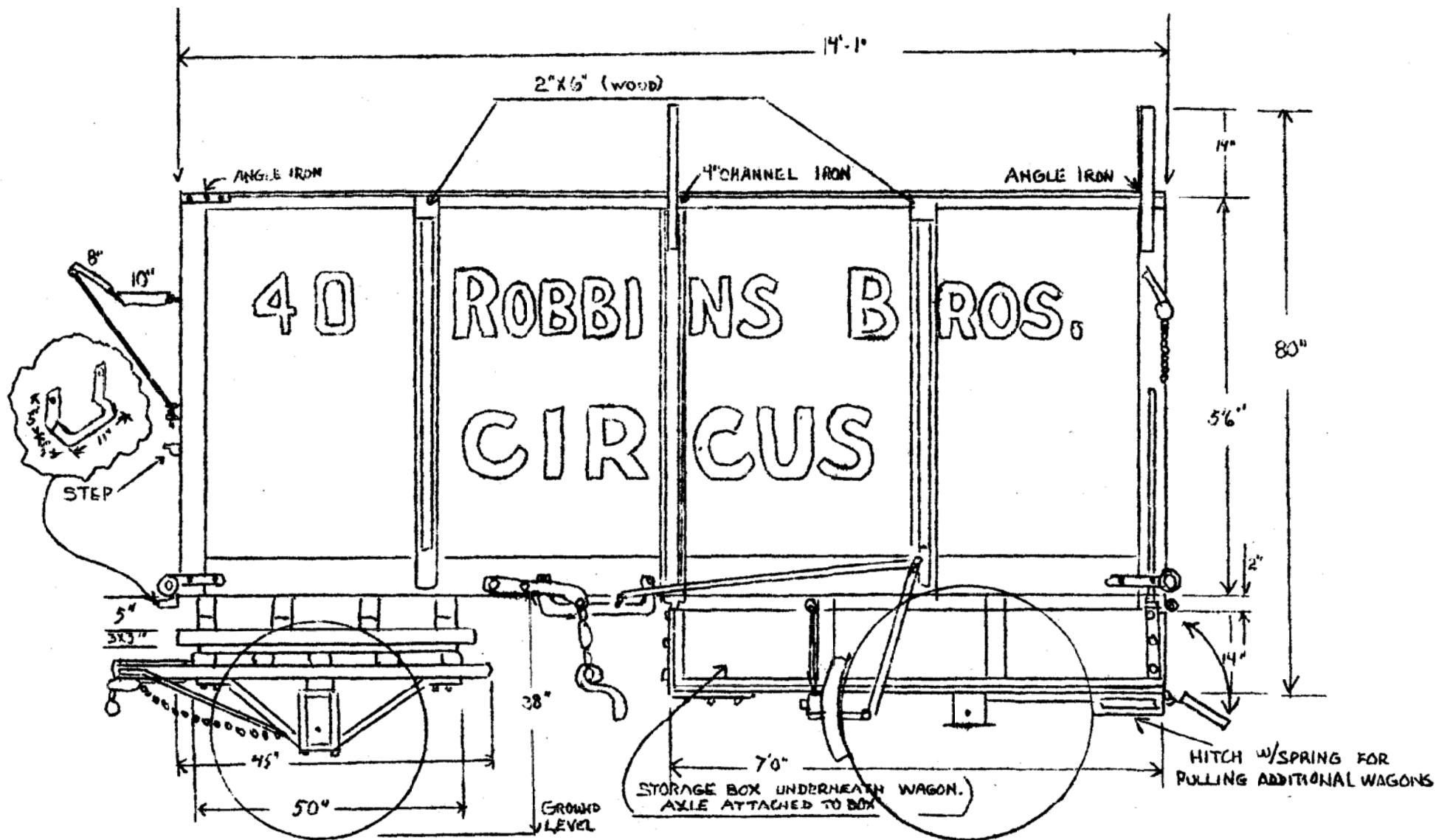
Pg 1 of 3

Circus Model Builders

Drawn By
Albert Conover

DRAWING NUMBER

#0163



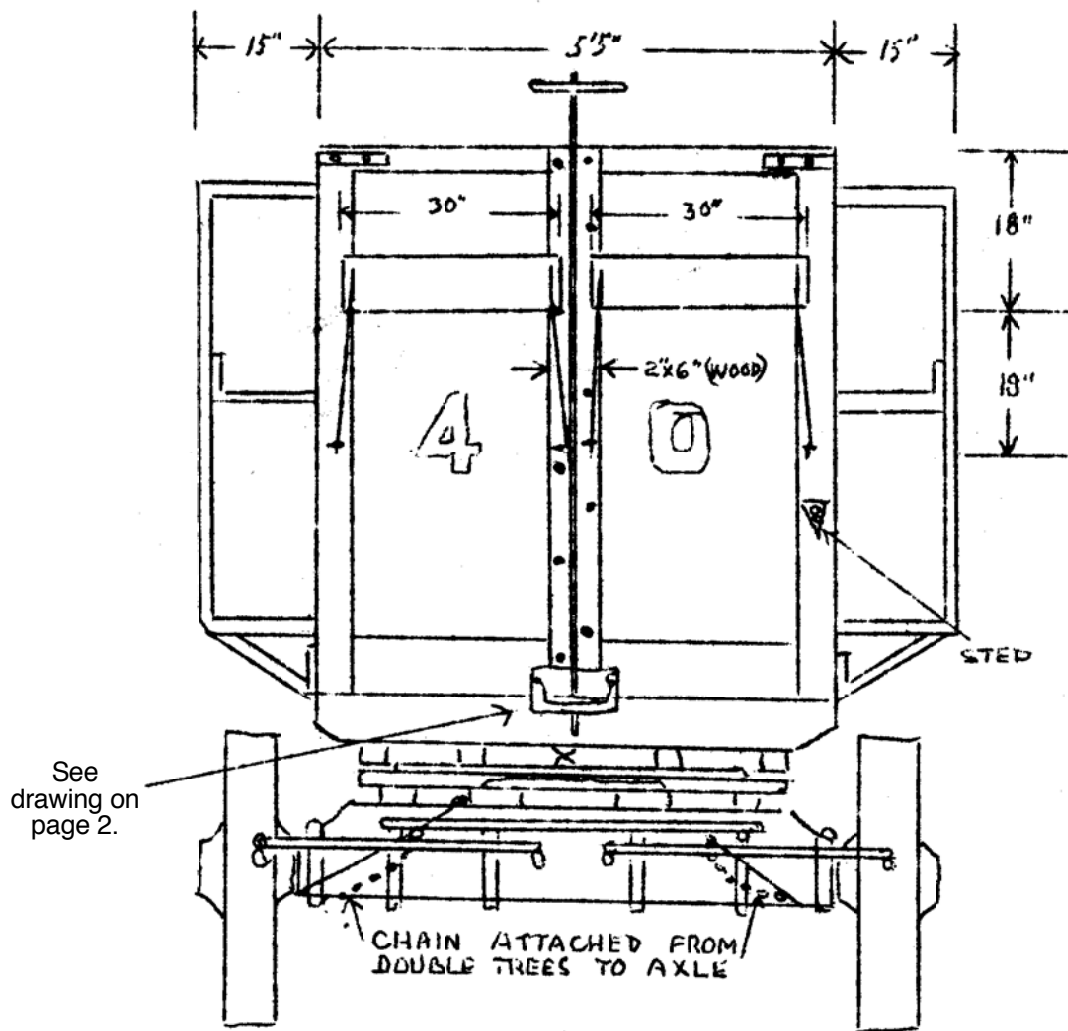
Robbins Bros. Circus
Side Show Baggage Wagon No. 40

Pg 2 of 3

SCALE: 1/2" = 1'

SCANNED & REVISED:
 04/25/2006

DRAWING NUMBER
#0163



See
drawing on
page 2.

CHAIN ATTACHED FROM
DOUBLE TREES TO AXLE

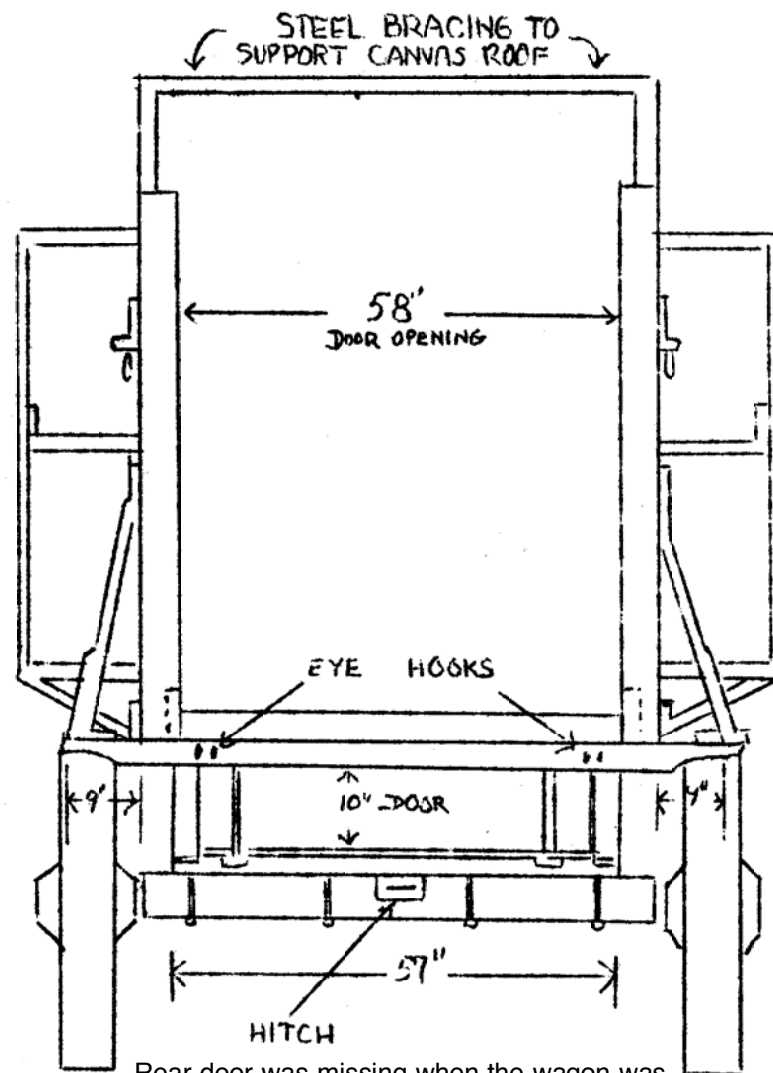
Notes:

Color Scheme

Body----- Orange
Letters ----- White with Outline in
Black
Undergear ----- Red
Wheels ----- Red

Wheels (Wood)

Rear ----- 42". 16 Spoke, 6" Tire
Front----- 36", 12 Spoke, 6" Tire



Rear door was missing when the wagon was measured so it is not in the drawing. It is believed to be drop type. Eye bolts could be hinge points.

Robbins Bros. Circus Side Show Baggage Wagon No. 40

Pg 3 of 3

SCALE: 1/2" = 1'

SCANNED & REVISED:
04/25/2006

DRAWING NUMBER

#0163