

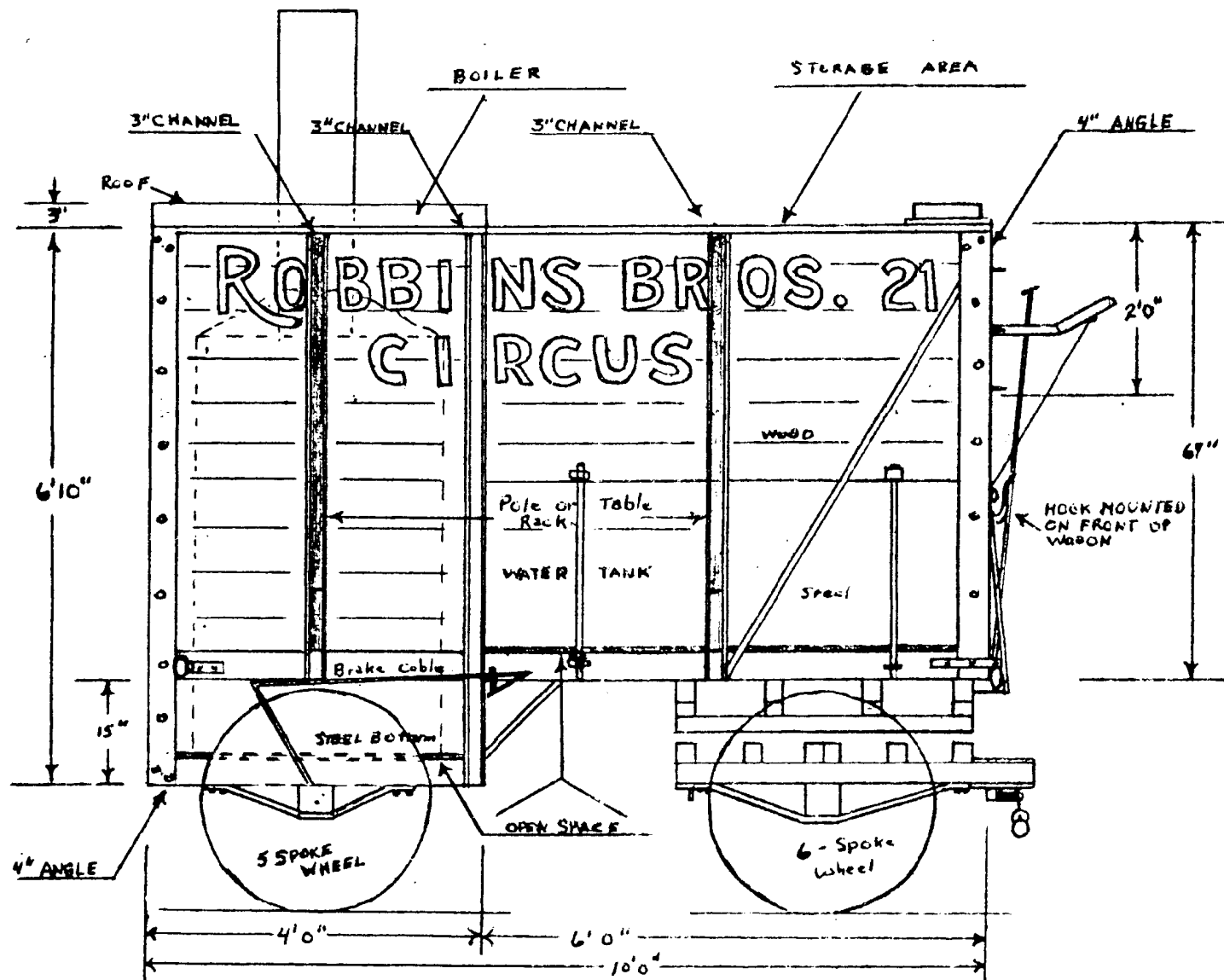
# Comments:

Wagon No. 21 as shown on the following plans was the Boiler Wagon and its main purpose was to supply hot water for kitchen and dining department use. It was, however, used for other purposes as can be seen on the plans and photos, to carry poles, stakes, canvas and tables and possibly many other department items. The wagon was constructed of steel and wood and was rather sturdily built as seen by the photos. Over the years it was repainted many times but on the Cole Bros. Circus it was painted orange with white lettering shaded in blue.

These wagons were used on the 1938 Robbins Show and later on the Cole Bros. Circus until about 1943. The photos shown of the boiler wagon in this article were taken on both of these shows. In comparison to the dining wagon very few changes were made to this wagon over the years. No. 21 boiler wagon was last seen in a graveyard in Louisville, Ky.

Mr. Conover recalls that this wagon, along with the dining dept. wagon (Plan 178) were used until around 1944 or 1945, at which time they were replaced by 3 wagons No. 20, 21, and 22. These three wagons were used thru 1948 at which time they were replaced by new wagons built by Kentucky Trailer Co. in 1949.

As to the construction of your models of these wagons, you will note that all dimensions shown on the plans are actual sizes and can be converted to any scale you might want to build in. With some serious study of the plans and photos, a very fine model can be built.



## Robbins Brothers Cookhouse Boiler Wagon No. 21

DATE: 1938

SCALE: 1/2" = 1'

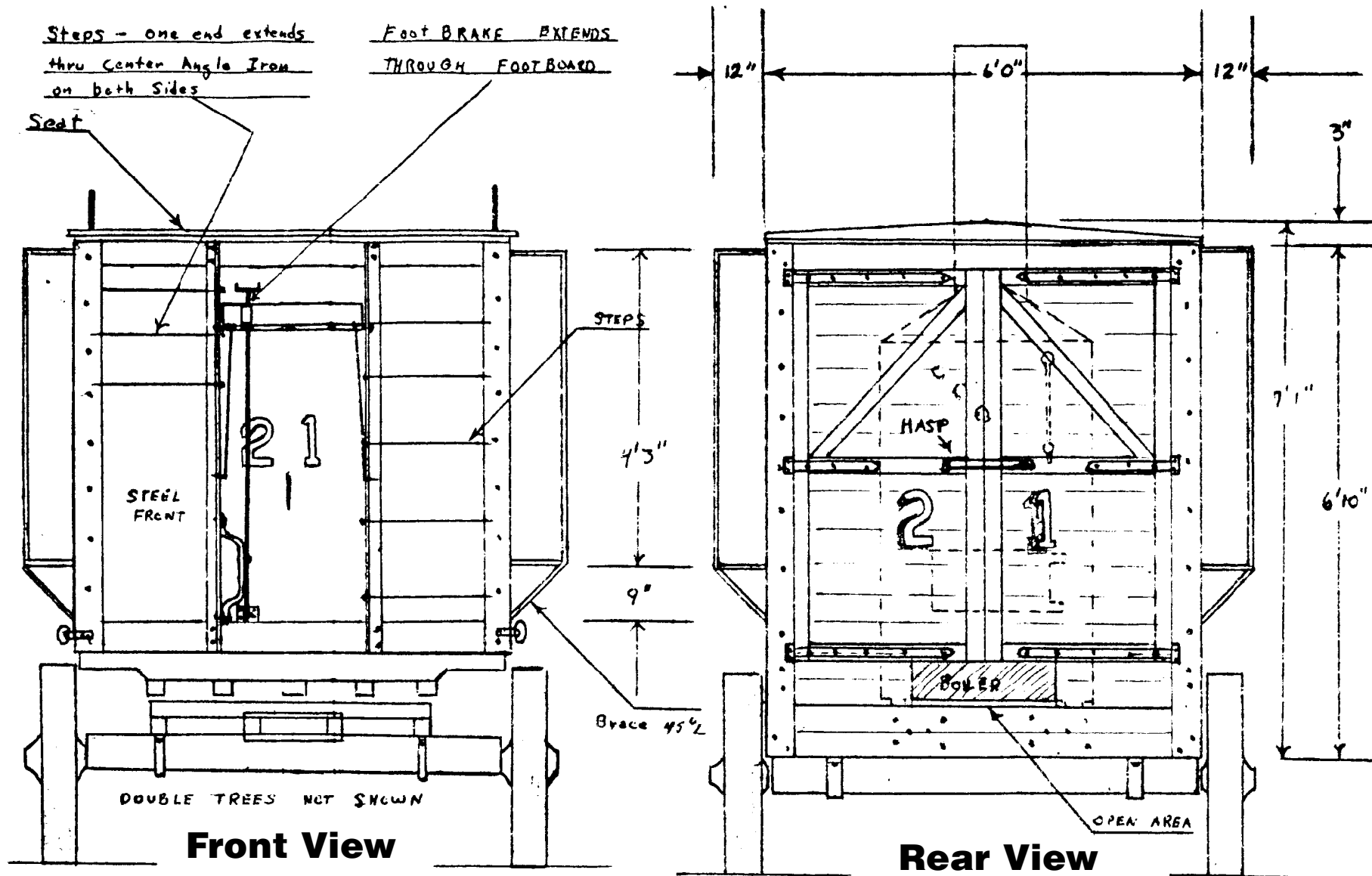
SCANNED & REVISED:  
11/27/01

Pg 1 of 3

## Circus Model Builders

Drawn By  
Al Conover, CMB #773

DRAWING NUMBER  
**#0180**



**Robbins Brothers  
Cookhouse Boiler Wagon No. 21**

DATE: 1938

SCALE: 1/2" = 1'

SCANNED & REVISED:  
11/27/01

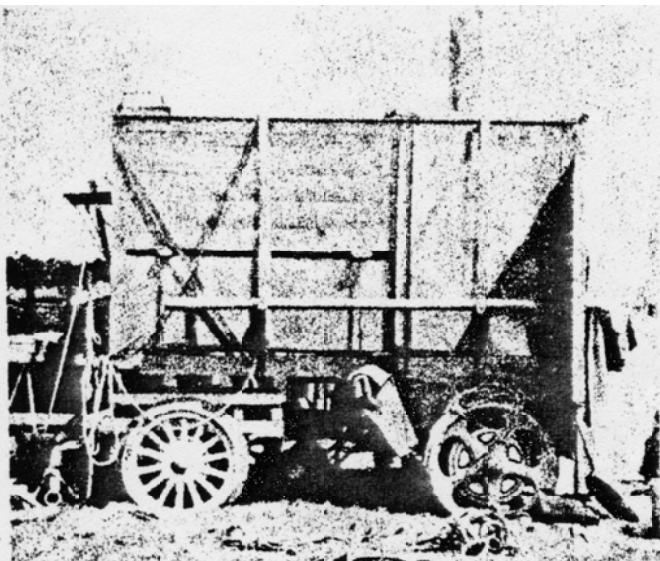
Pg 2 of 3

**Circus Model Builders**

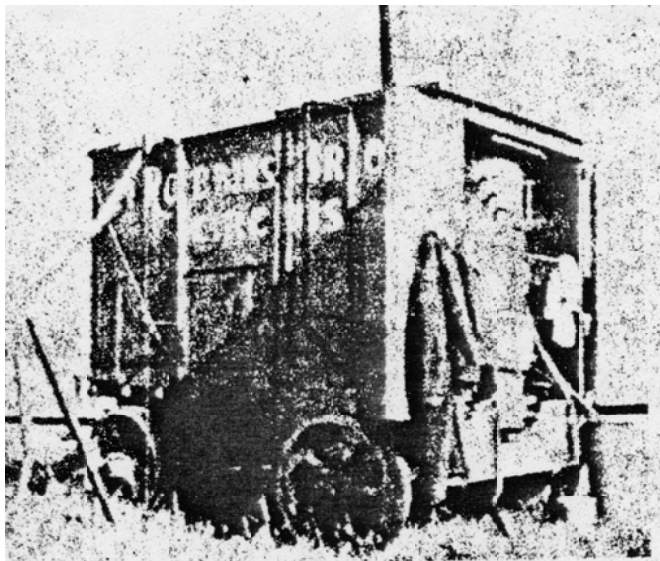
Drawn By  
Al Conover, CMB #773

DRAWING NUMBER

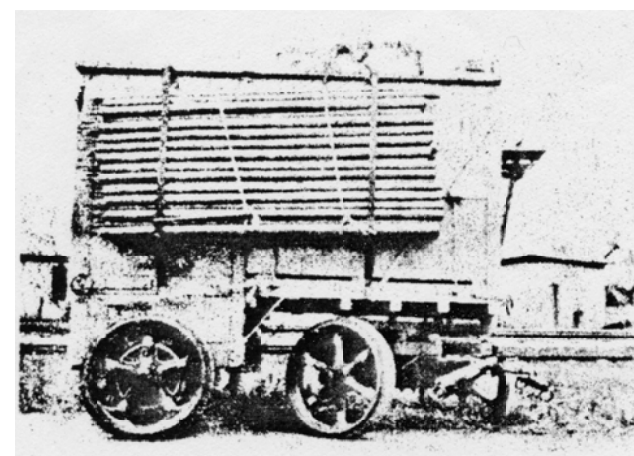
**#0180**



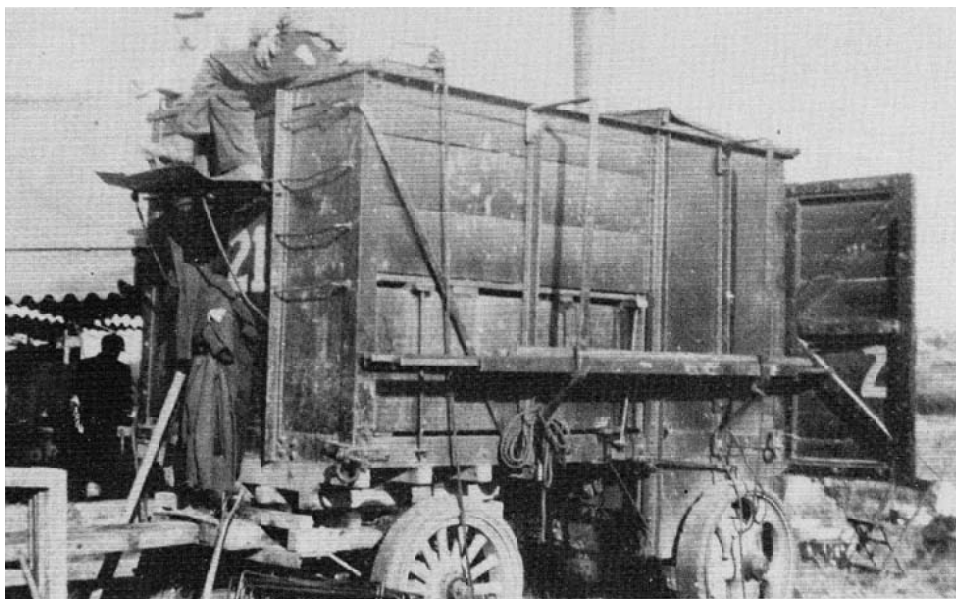
No. 21 as Cole Bros. Boiler Wagon in 1940.  
George Piercy Photo



No. 21 as Robbins Bros. Boiler Wagon  
William Koford Collectionn



No. 21 Exact year and show unknown.  
George Piercy Photo



Steam boiler wagon No. 21 on Cole Bros. Circus in 1941. Note the water tank in the lower part of the front end of the wagon.

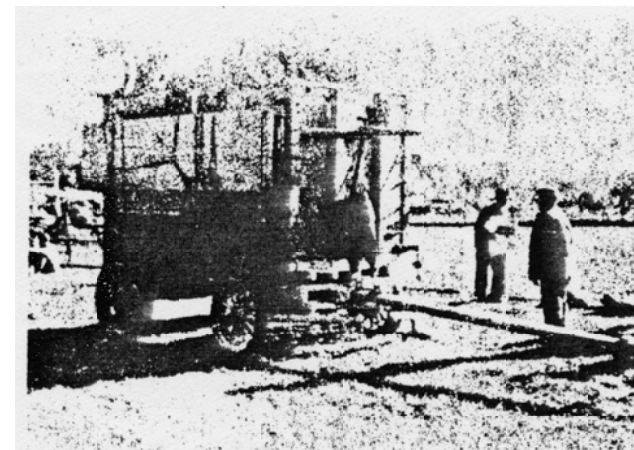
William Koford Collection

Plans Superintendent Note:

We apologize for the quality of the photos, but original copies of the photos nor the Aug - Sept 1965 edition of the LCW were not available when reproducing this plan.

M. Dreiling, Superintendent of Plans, Nov. 2001

© Copyright 1999 - 2004 by Circus Model Builders, Inc.



No. 21 as seen on Cole Bros. in 1940  
Richard Conover Photo

## Robbins Brothers Cookhouse Boiler Wagon No. 21

DATE: 1938

SCALE: 1/2" = 1'

SCANNED & REVISED:  
11/27/01

Pg 3 of 3

## Circus Model Builders

Drawn By  
Al Conover, CMB #773

DRAWING NUMBER

#0180