

Stegall Sisters Circus, The Sisters Show, uses mechanical seat wagons. The original “C oncello type” seat wagons shown in LCW, Jan-Feb 1976, page 14 have been remounted, refurbished, and in a couple of cases replaced. Of the 18 wagons planned, five are complete and three are under construction.

Plastic is the basic material used in construction. The undercarriage and frame flooring of a military stake wagon is extended. The center of the flooring is cutout so that “k nock-down” seat sections will fit in between outside false possum bellies.

A military van is cut to provide the doors to the interior dressing-storage compartment. The sides of the van are cut to form the angle wedges on which the erected seats rest at set-up. The seat flooring is cut from 1/16 inch plastic sheets (double-blade razor cartons, tooth brush containers, plastic shoe boxes, etc. are good sources for flat pieces of 1/16 plastic).

Fiberglass window screen is cemented to the plastic to provide a gripped surface flooring. Removing the wire from 1/16 inch diameter “P lastruct” plastic coated wire and inserting a smaller diameter straight pin results in hinges for the “wing-out” sides. One-eighth inch “P lastruct” “T” bars glued to the floor and used for general admission “blues” clear acetate (the kind used in binders to protect paper) are stripped-painted with water base paint, cut, and cemented to the “T”s to make backs for reserved seats. Small strips of plastic are cut to provide side railings.

On the left of Photo 1 a partially completed seat wagon is in the center; and plastic building materials are shown on the right.

Photo 2 shows three seat wagons in various stages of construction. The center wagon shows “fiberglass-screen-flooring” along with the plastic wire coat used for hinges. The wagon lengths are about 28 feet to scale so that three can fit on the 86 foot trailer-train flats I use.

The first seat wagons I made had 13 attached rows of seats and 7 “knockdown” rows; now changed to 12 and 8 the HO scale people fit in the seats much better. The recessed sides allow for permanent erection of the top 12 rows.

However, the permanently erected position does require an extra lift maneuver in the mechanics of the “up and down” of the wings.

For example, instead of down and out, Section A is spotted with the left wing in the down and out ready position. However, the right wing is out but angled up.

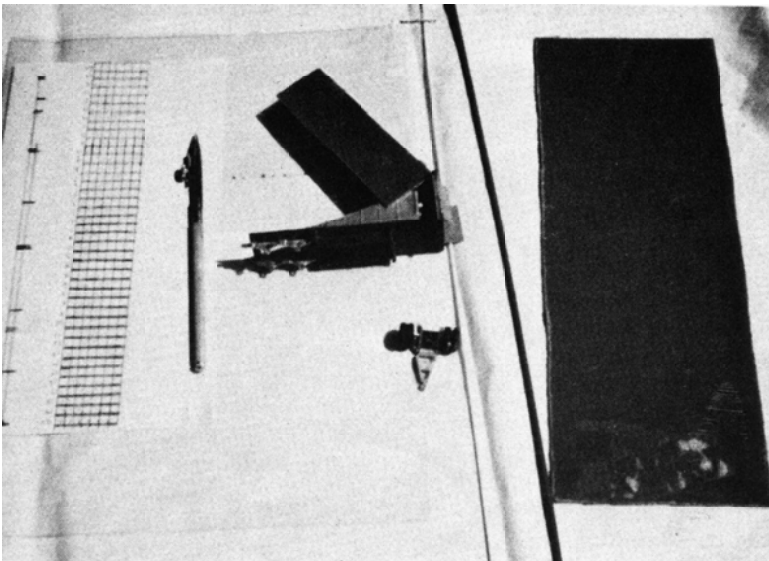


Photo 1. Materials and construction processes.

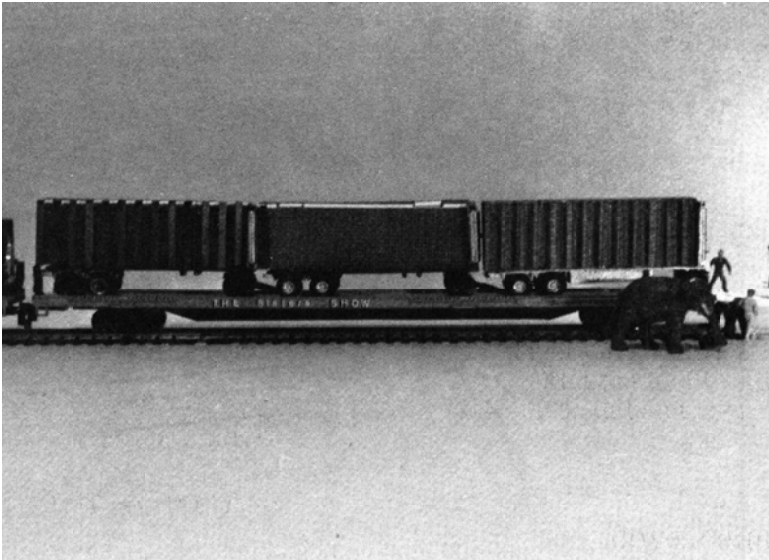


Photo 2. Seat wagons in various stages of construction.

Mechanical Seat Wagons in “HO”			
DATE: 1946	SCALE: HO	SCANNED & REVISED: 09/24/03	Pg 1 of 4
Circus Model Builders			
Drawn By Jim Stegall, CMB 2085			DRAWING NUMBER #0265

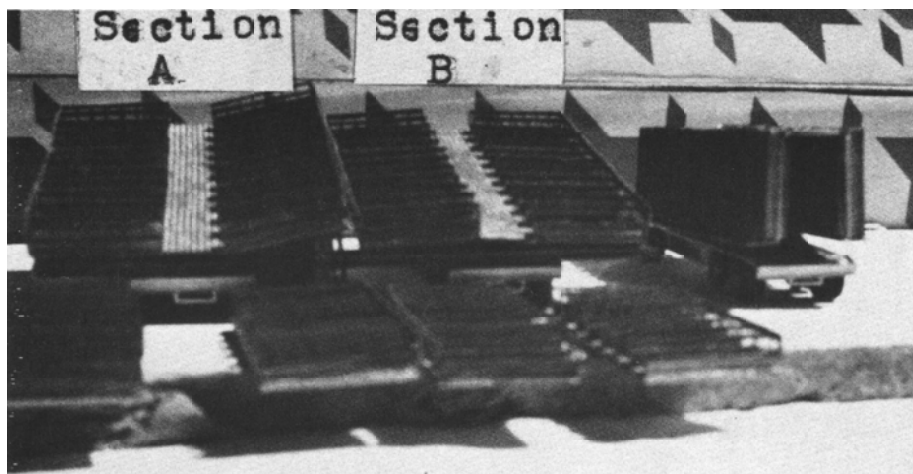


Photo 3. Wagon on left showing extra lift maneuver; wagon on far right starting initial

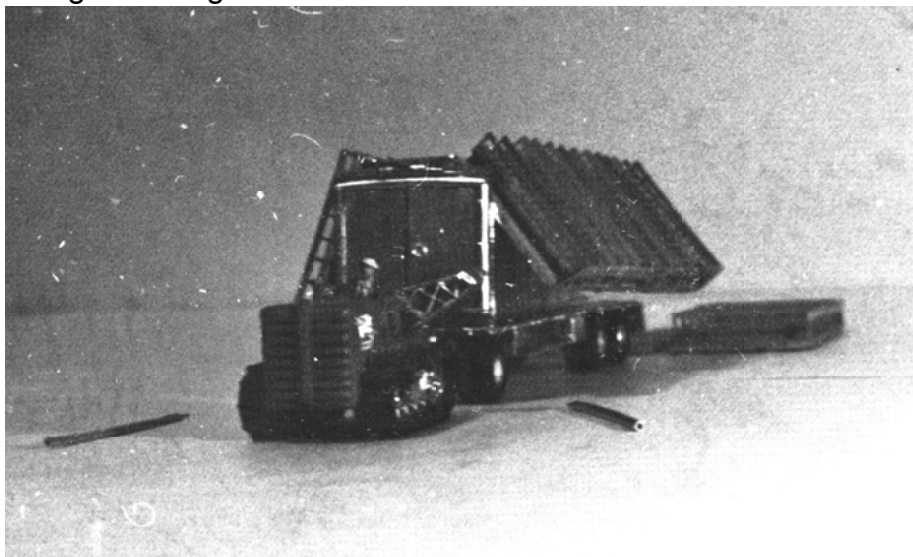


Photo 4. Start of set-up; backyard view.

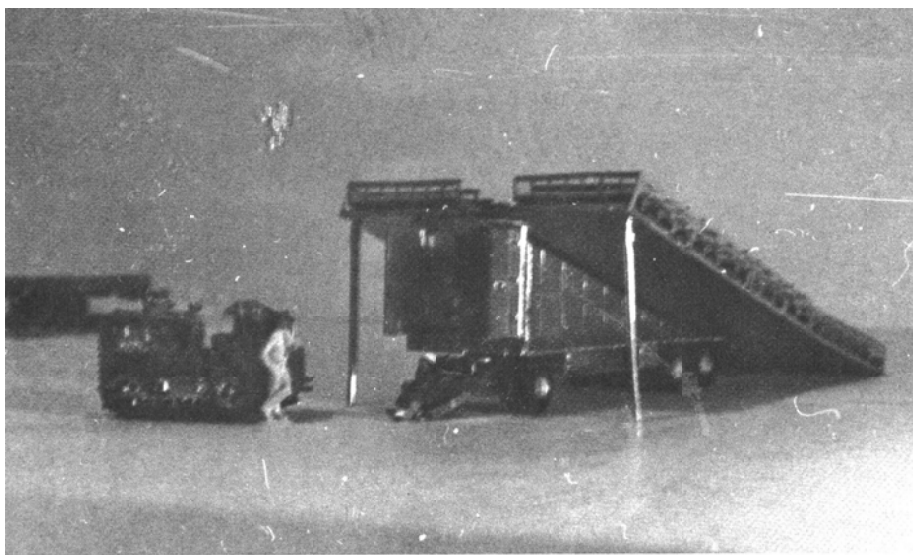


Photo 5. Set-up showing underneath dressing space.

Section B is spotted and the left wing is made ready and the right wing angled up. Then the right wing of section A is lowered to the ready position next to the left wing of section B. The process continues on down the line until all sections are up. The extra lift maneuver is shown in Photo 3.

The recessed sides and the "K knockdown" seats can be seen in the start of setup as shown in Photo 4. The inside of the wagon between the recessed sides is scaled to be 4 feet wide. The area underneath the wings is also used for dressing areas when the seats are set-up [See Photo 5).

A 1/2 inch "Plastruct" "C" bar provides a groove in which the lip-edges of the permanent and knock down sections lock at set-up [see Photo 6]. Each wagon has a capacity of 280 persons and will easily hold an elephant in case patrons need reassurance of structural integrity. To scale, each wagon set-up is 44 feet along the side base and 24 feet wide.

From Photos 1 through 6 one notes that the undercarriage is reversed front to back; opposite the originals. This allows for conversion of the same seat wagons to my truck show.

Photo 7 shows how the 5th wheel for the wagon is dropped and an extension for an 8 or 12 foot living quarters is attached to make the unit a 35 or 40 foot trailer. The rig, set-up with seats under the tent and living quarters and tractor outside the tent along the stake line, can be seen in Photo 8.

Photos 9 through 14 show how the wagons are utilized for several model scenes. One of my purposes in circus model building is to try and make each piece of equipment unique in some way.

As you can see in the photos I have enclosed, the seat wagon on the flat, being pulled around the lot, set-up under the tent, and used on both railroad and truck show model scenes is the same model: A Model showing much utility as well as uniqueness.

Mechanical Seat Wagons in "HO"

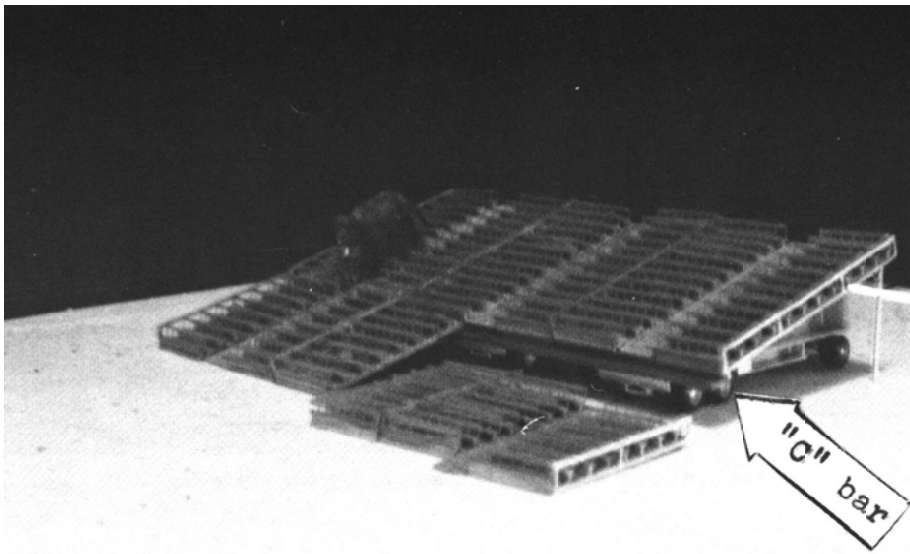


Photo 6. "C" bar connector between permanent and knockdown seats.



Photo 7. Conversion of seat wagon to seat trailer.

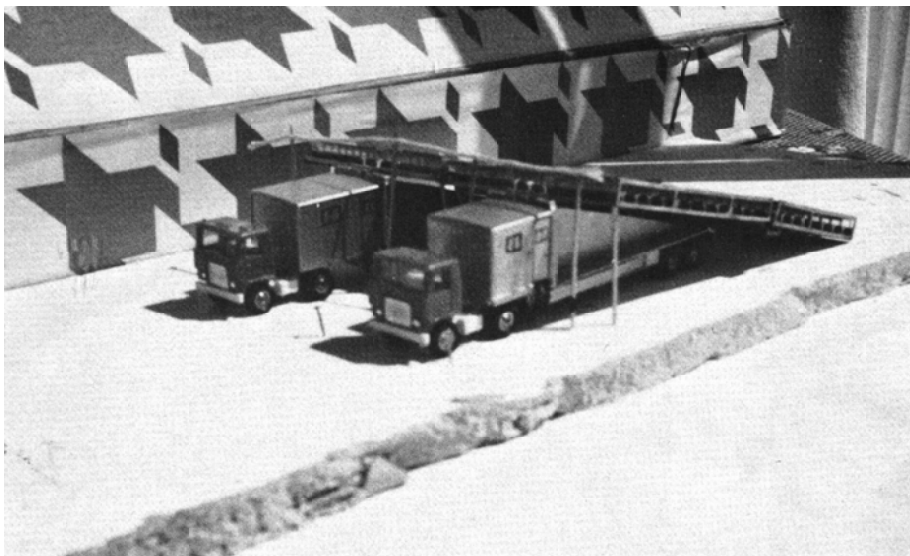


Photo 8. Tractor-trailers as seats/living quarters for Truck Show.

Mechanical Seat Wagons in "HO"

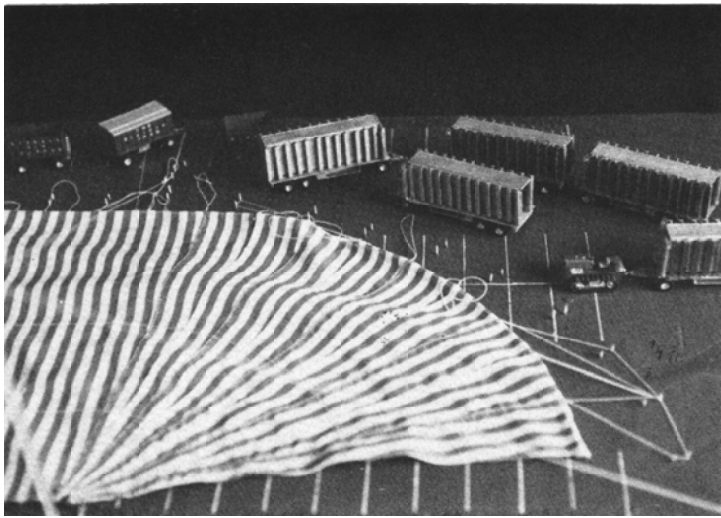


Photo 9. Wagons at lot waiting for set-up.

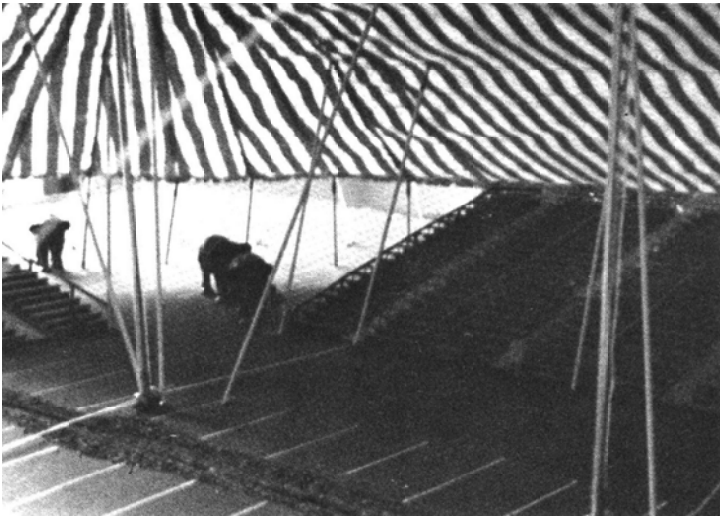


Photo 10. Wagons set-up: Big Top on parking lot.

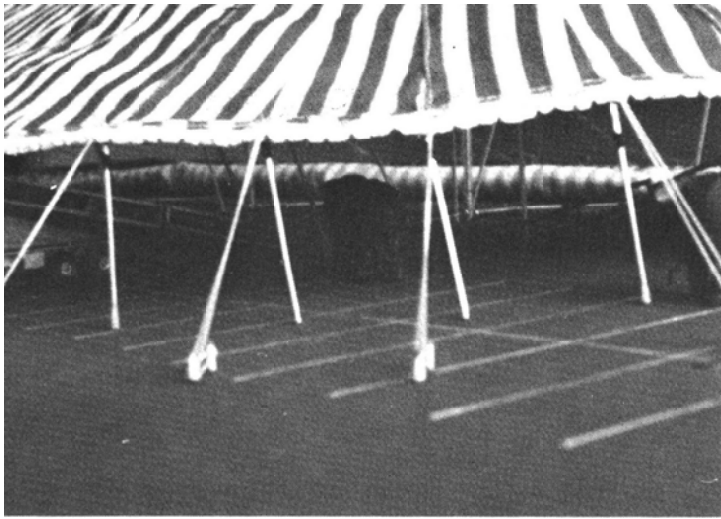


Photo 11. Back door: note side-railing on wagon.

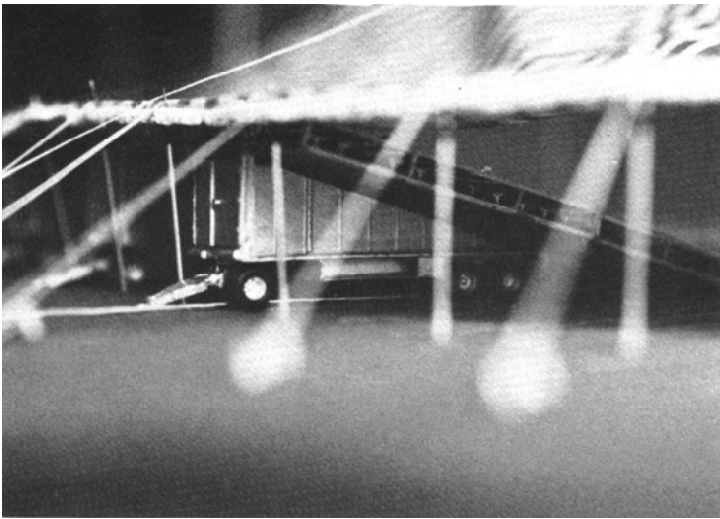


Photo 12. Backyard: end of show with little activity.

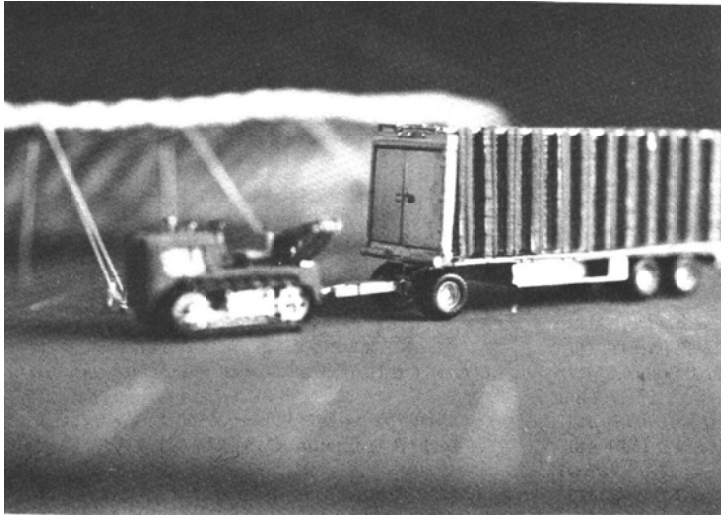


Photo 13. Tent going down; wagon leaving for runs.

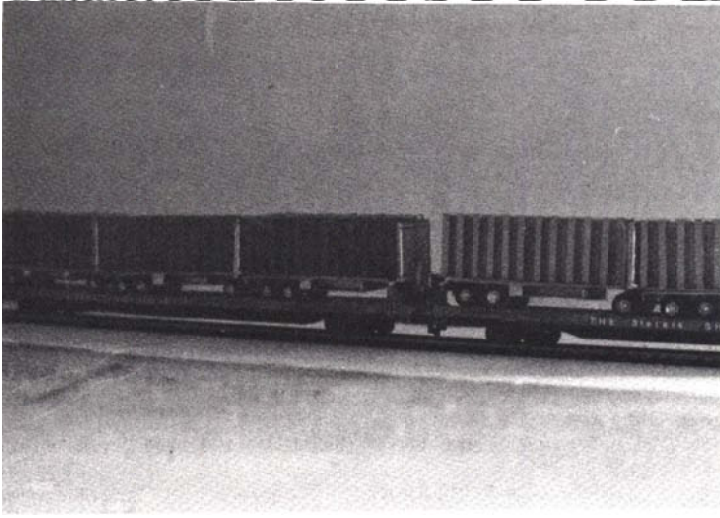


Photo 14. Wagons loaded and ready to leave.

Mechanical Seat Wagons in "HO"