

Goliath Wagon No. 154

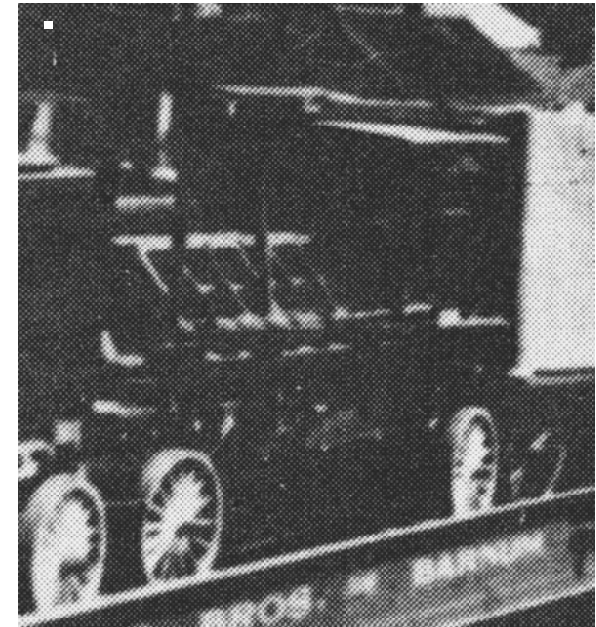
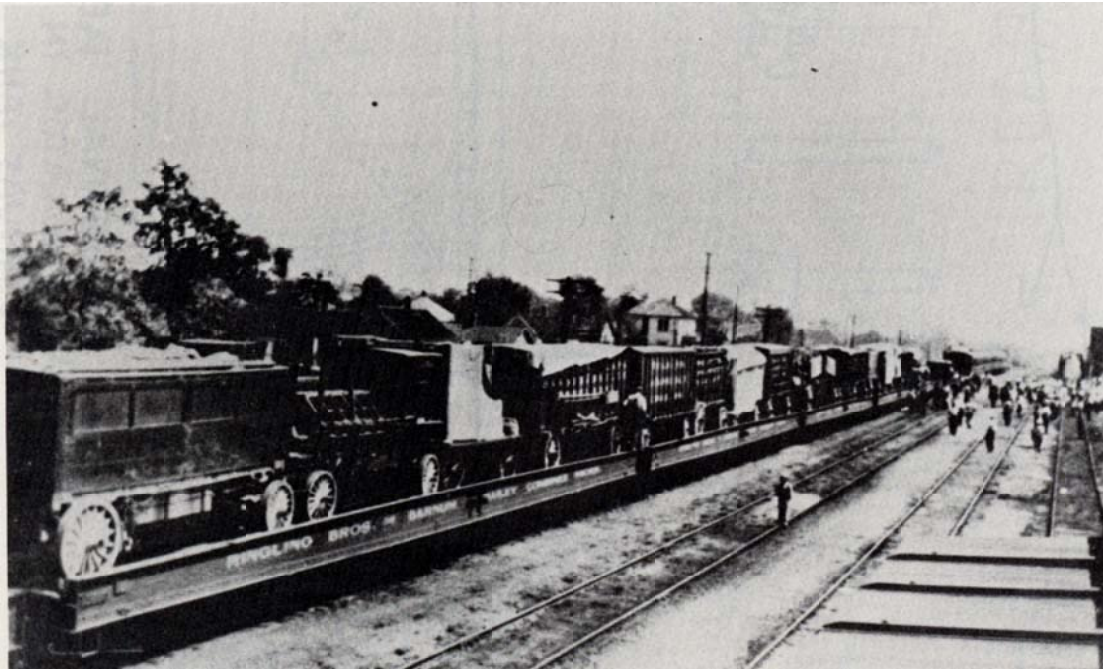
by Maurice Allaire

Through much research and begging, I was fortunate to find the right person who saw and measured this mysterious missing wagon of the Goliath series as mentioned by our Question and Answer expert Gordon Carver, who gave us a most interesting story of the two wagons and dates that used to carry the sea elephant to and from the railroad to the show etc. He also did mention a third wagon that was used as a generator to pump water from water wagon in to the tank built for the beast. This was before the truck fever started to do the work.

My luck come about when my good friend Gordon Potter came to the rescue. He not only sent a plan and measurements of the wagon but also a photo of the wagon on the flatcar. Look at the photo and look at the second wagon from the end or left and you will see it This wagon also shows up in the White Tops issue of the Sells-Floto story. It can be seen at the end of the parade. when they carried the air cally. and has wood panels on the sides advertising an act.

This wagon, when it was on the Sells-Floto show, was numbered 101 and then when the 'big one' started to get hungry it took the wagon and numbered it 154. When they scrapped the wagon that carried the tank and props in the cage with the rounded top (this was one of the original John Robinson cottage cage) there was only one animal in this cage and that was a Tapir in one of the end compartments.

All credits and personal thanks go to Gordon Potter for giving me permission to share this wagon with you.



Blown-up view of the Goliath Wagon

RBBB

Goliath Wagon No. 154

DATE: 1930s

SCALE: 1/2" = 1'

SCANNED & REVISED:
11/02/01

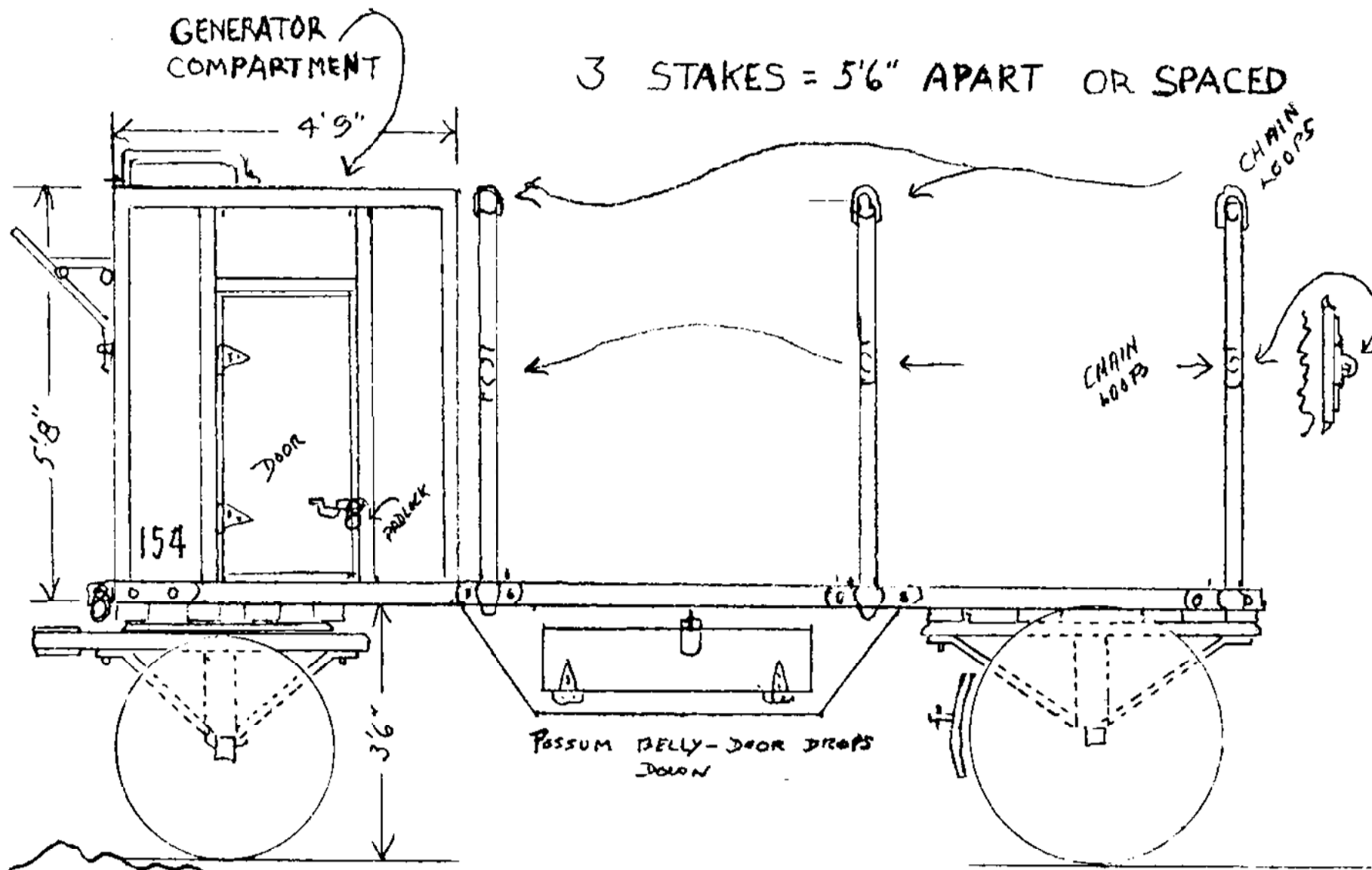
Pg 1 of 3

Circus Model Builders

Drawn By
Maurice Allaire

DRAWING NUMBER

#0267



Wagon Dimensions

16' Long
5' 8" High
6' Wide

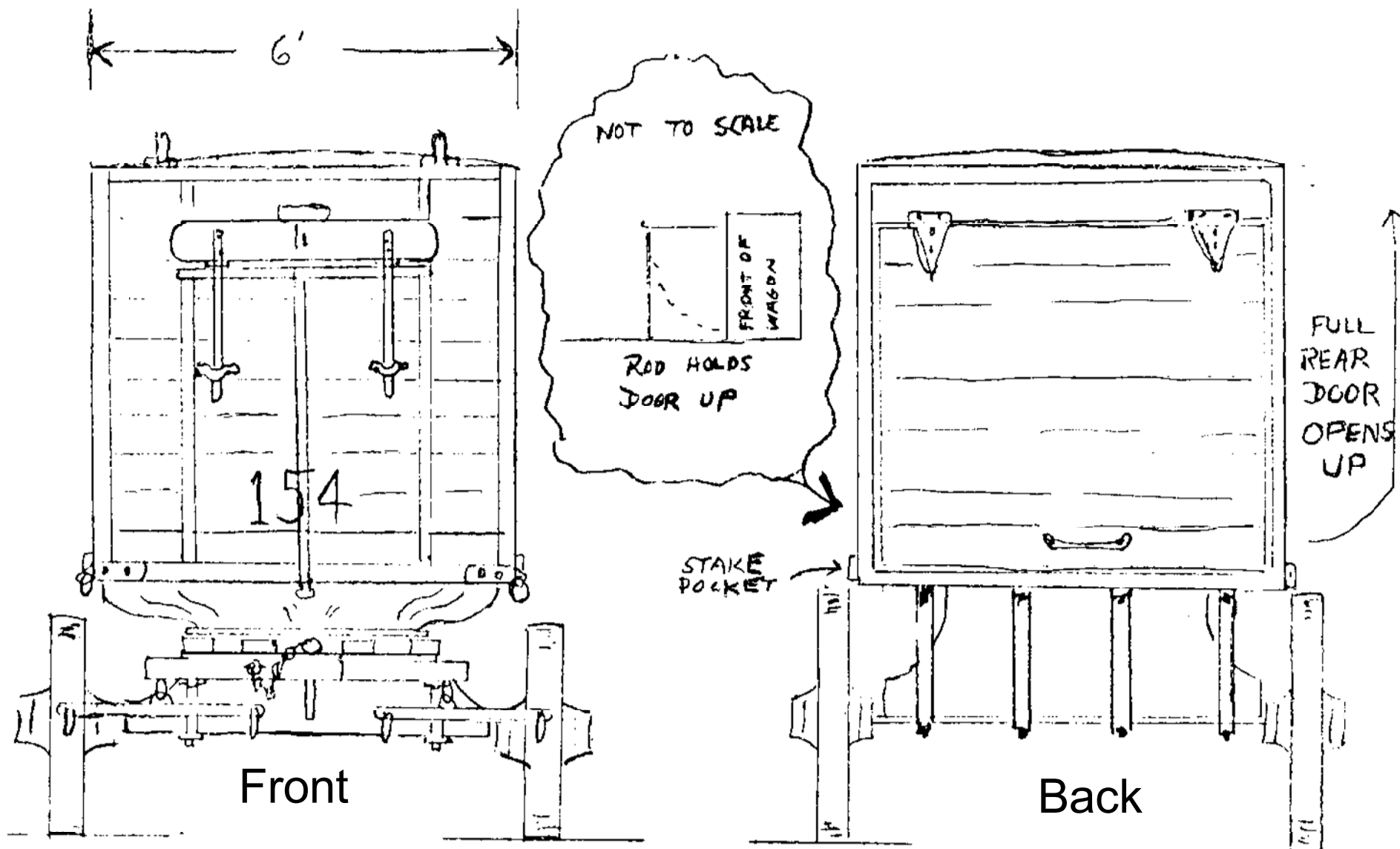
RBBB Goliath Wagon No. 154

Pg 2 of 3

SCALE: 1/2" = 1'

SCANNED & REVISED:
11/04/2001

DRAWING NUMBER
#0267



RBBB
Goliath Wagon No. 154

Pg 3 of 3

SCALE: 1/2" = 1'

SCANNED & REVISED:
 11/04/2001

DRAWING NUMBER
#0267