

Hagenbeck-Wallace Wagon No. 38 is the third in a recent series of Ed Griminger Specials. Actually we could build the wagon from his free-hand sketches which are well detailed.

Also to help me was a front, rear, and side view drawings done by CMB member, Frank R. Sullivan, No. 225. These, too, are beautifully done and they are great for the LCW just as they are. What I have done is to add a bit of gingerbread.

It was interesting to note variations in detail and dimensions as done by two men. Again, no two men can measure the same wagon and achieve identical results. A decision was made as to which dimensions seemed the most logical when compared to the snapshots. Other dimensions were changed so as to add up to the total for overall dimensions. On smaller scale models such changes would be of little significance. On critical parts that must fit exact spaces, it is always better to fit-and-try as you go along rather than build the part to dimensions and find that it will not fit. Some dimensions were left out because of this. Other dimensions were not available, especially for the wagon tongue. Or how the brake-chain was attached to operate the brake beam; no "Info" on this.



Side view of Wagon No. 38 taken in Baraboo, WI, in July of 1996. The wagon was loaded on the Milwaukee Circus parade train. [M. Dreiling photo]



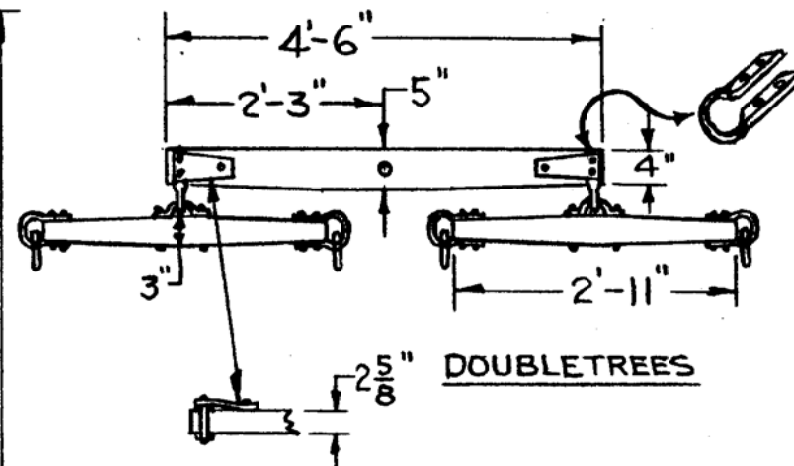
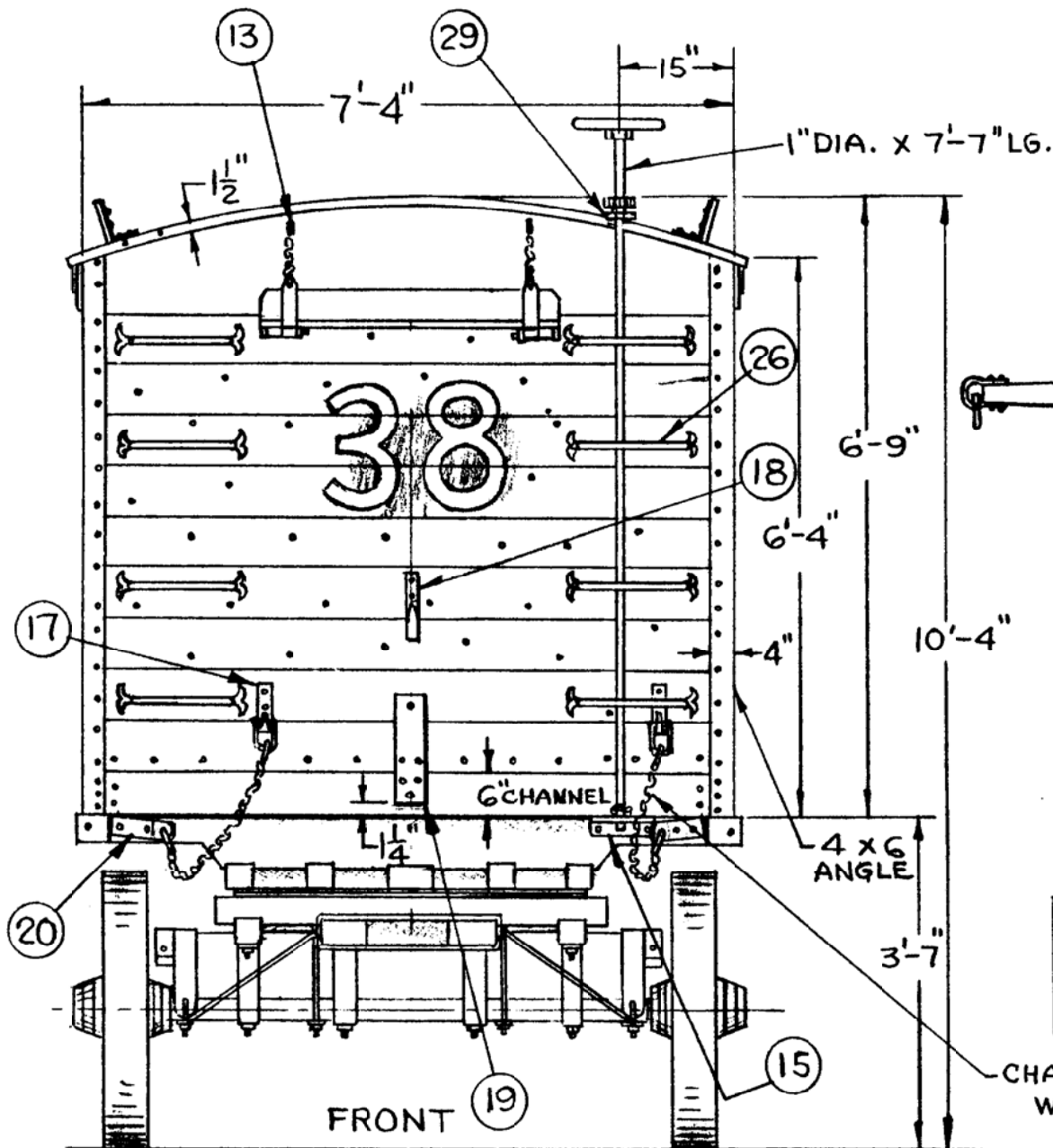
Front View



Rear View

The Hagenbeck-Wallace Circus, on the road from 1907 until 1938, with the exception of the 1936 season, was one of the greatest and best known of the railroad shows. Heavy baggage wagons, such as No. 38, were used to carry performers trunks and wardrobe. The body over the wheel construction, an unusually wide body, did not permit attachment of racks on the outside to carry additional equipment. Built in the Peru, Indiana winter-quarters in the 1920's, this wagon was used through the 1938 season.

Hagenbeck-Wallace Baggage Wagon No. 38			
DATE: 1920s/30s	SCALE: 1/2" = 1'	SCANNED & REVISED: 03/19/03	Pg 1 of 11
Circus Model Builders			
Drawn By Robert C. Robinson, CMB 942			DRAWING NUMBER #0198



WAGON COLORS:
 BODY: RED
 UNDERGEAR: YELLOW
 LETTERS & NUMBERS : WHITE-BLUE EDGE

CHAINS: (11) "3" LINKS
 WITH (1) "5" LINK EACH END.

Hagenbeck-Wallace Baggage Wagon No. 38

Pg 2 of 11

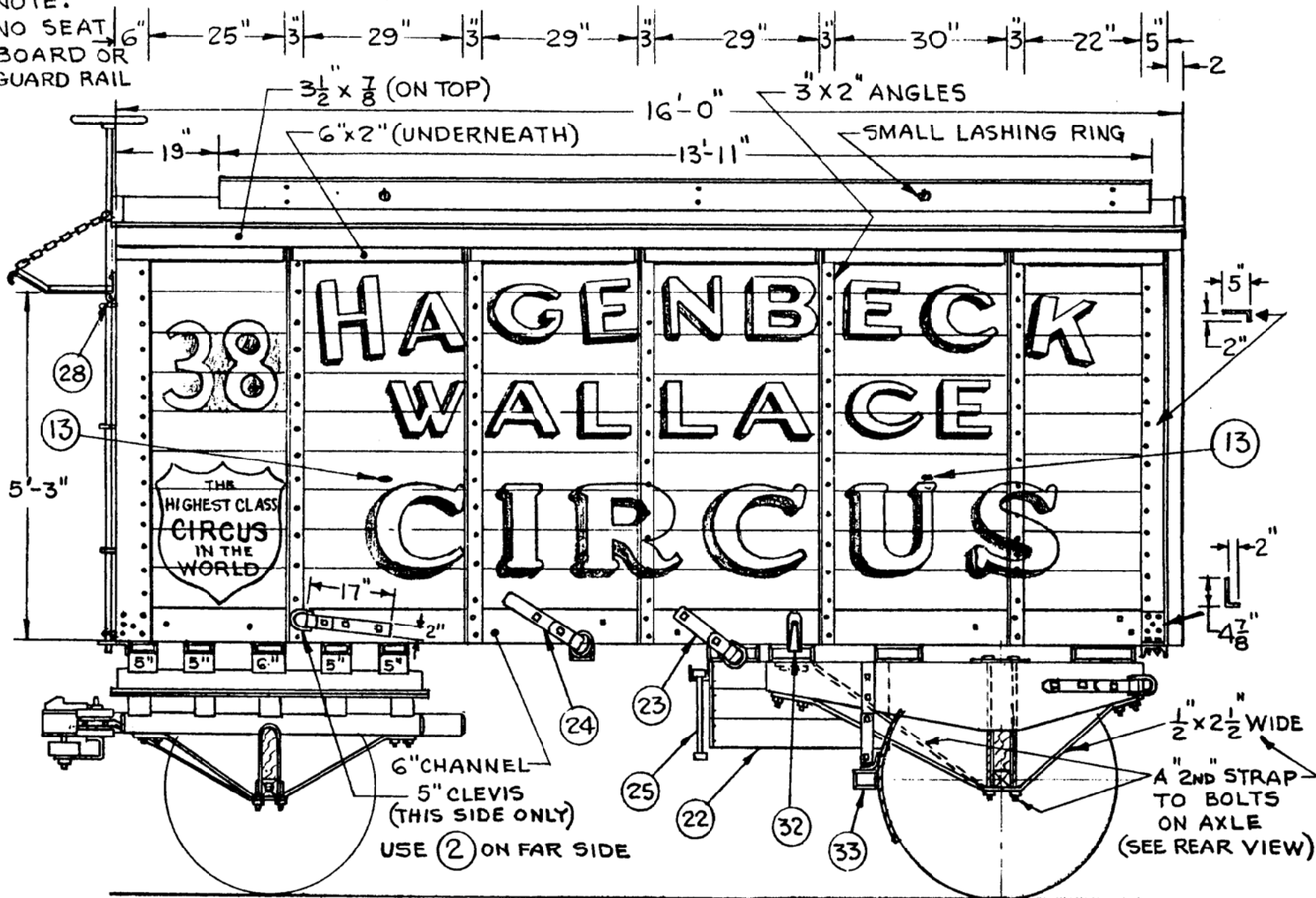
SCALE: 1/2" = 1'

SCANNED & REVISED:
 03/19/03

DRAWING NUMBER
#0198

NOTE:

NO SEAT
BOARD OR
GUARD RAIL



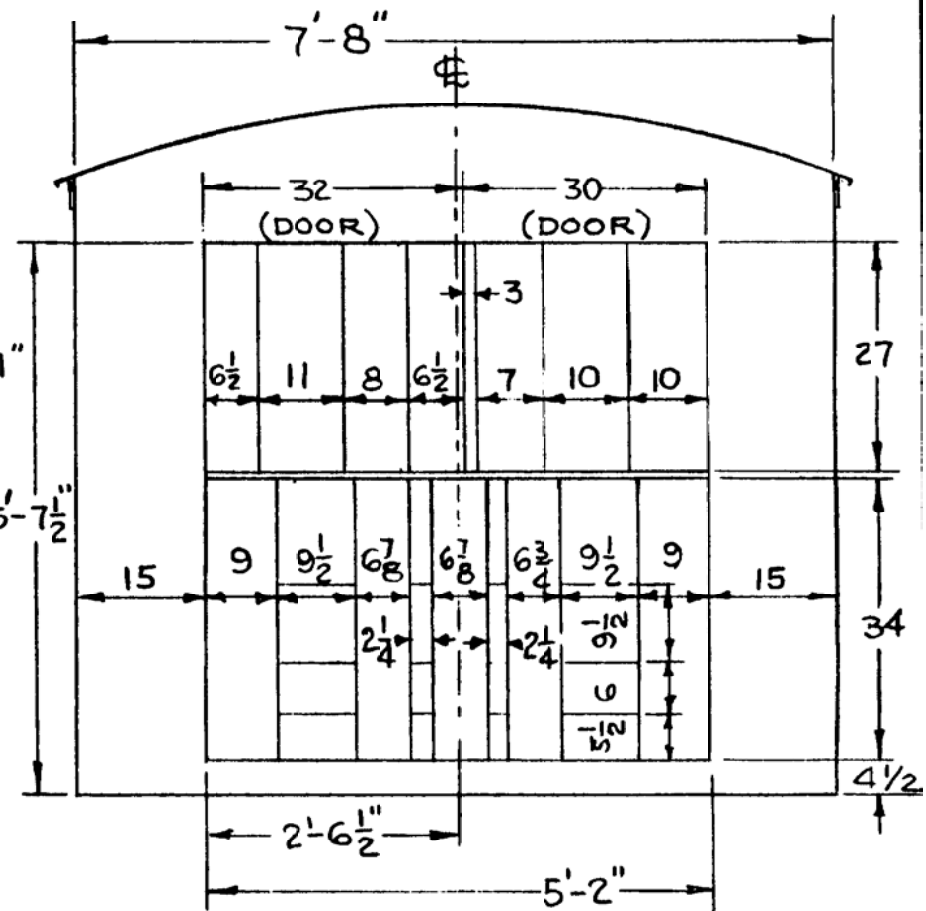
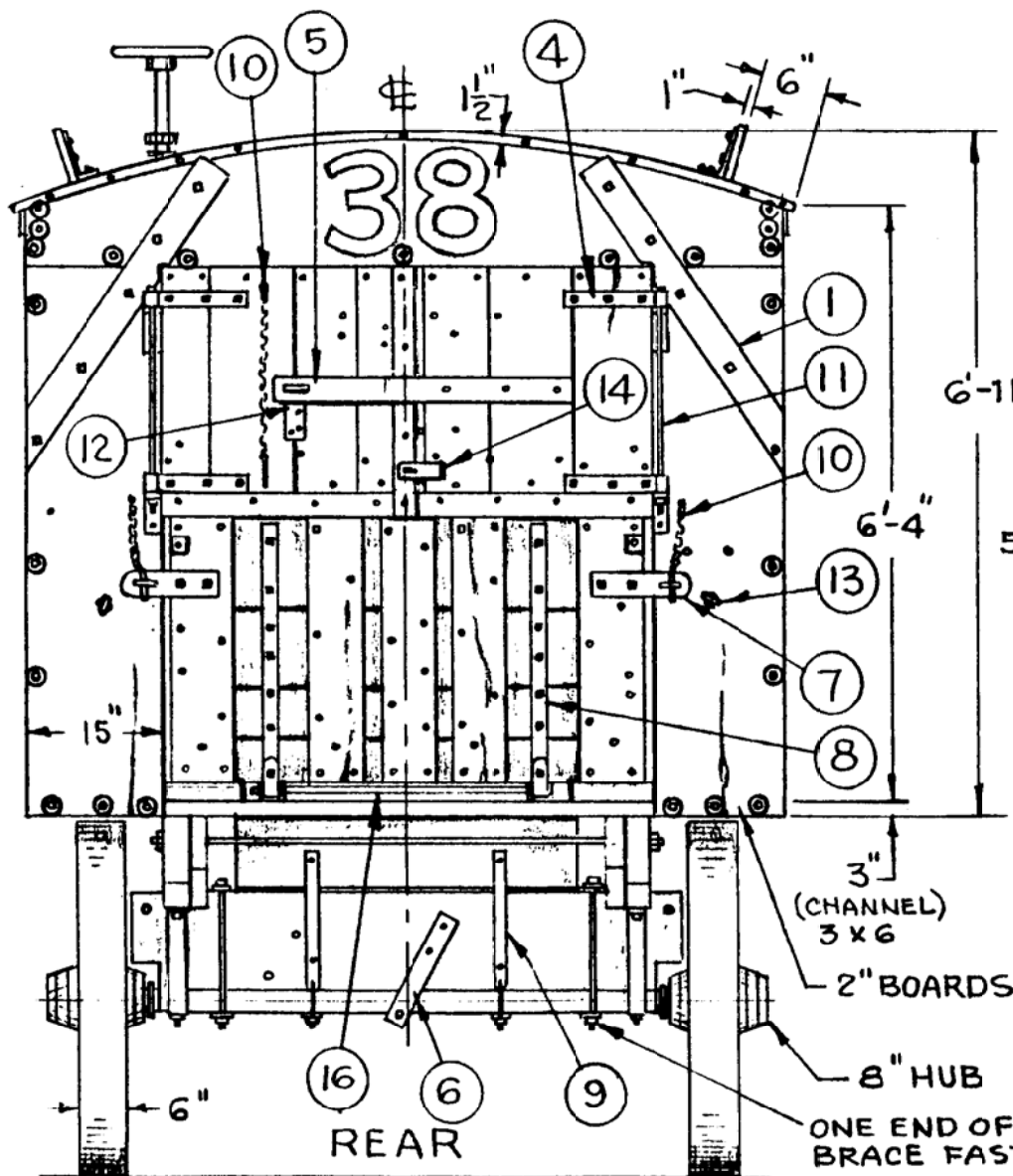
Hagenbeck-Wallace Baggage Wagon No. 38

Pg 3 of 11

SCALE: 1/2" = 1'

SCANNED & REVISED:
03/19/03

DRAWING NUMBER
#0198



REAR DOORS DETAIL

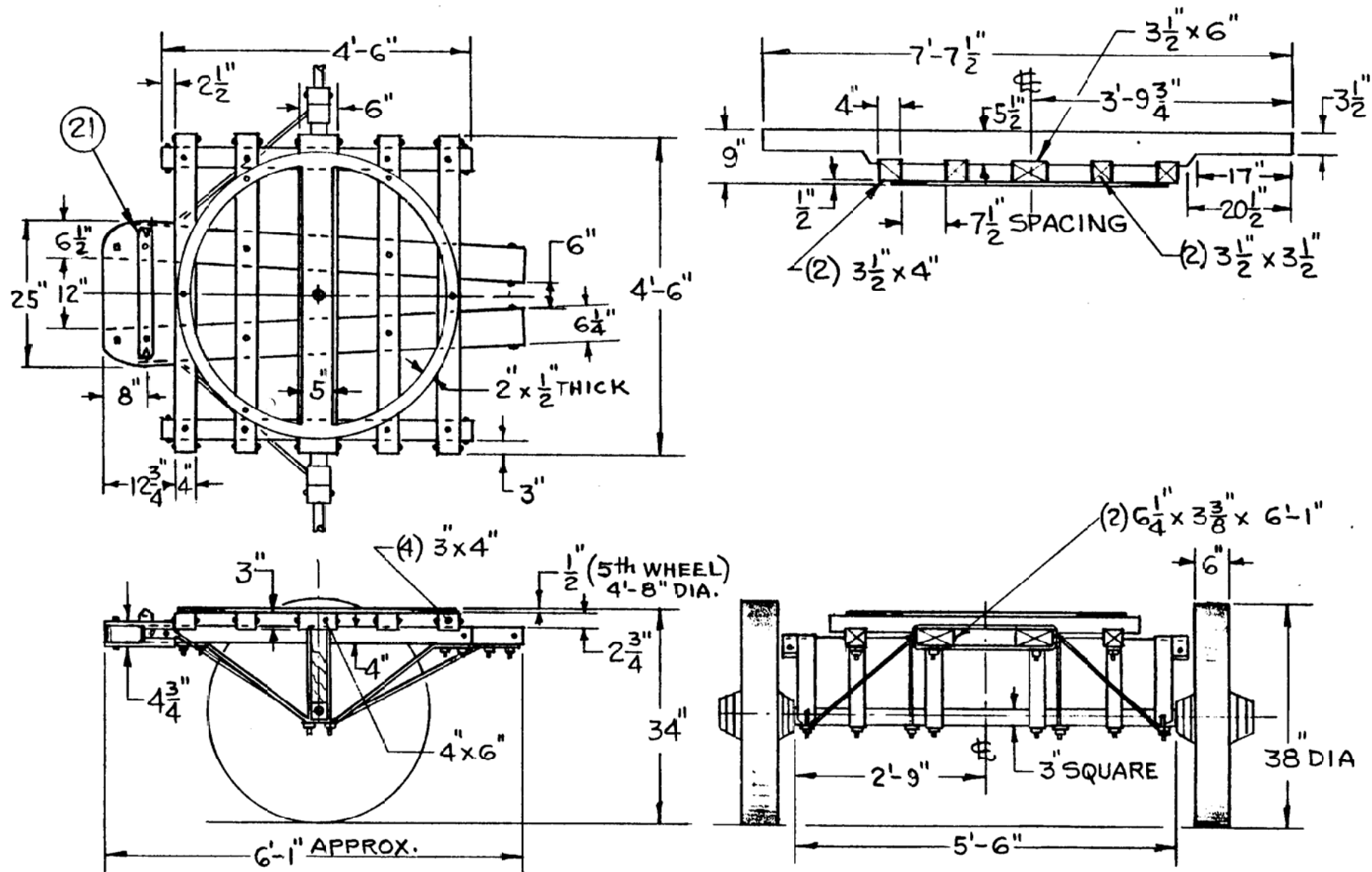
Hagenbeck-Wallace Baggage Wagon No. 38

Pg 4 of 11

SCALE: 1/2" = 1'

SCANNED & REVISED:
03/19/03

DRAWING NUMBER
#0198



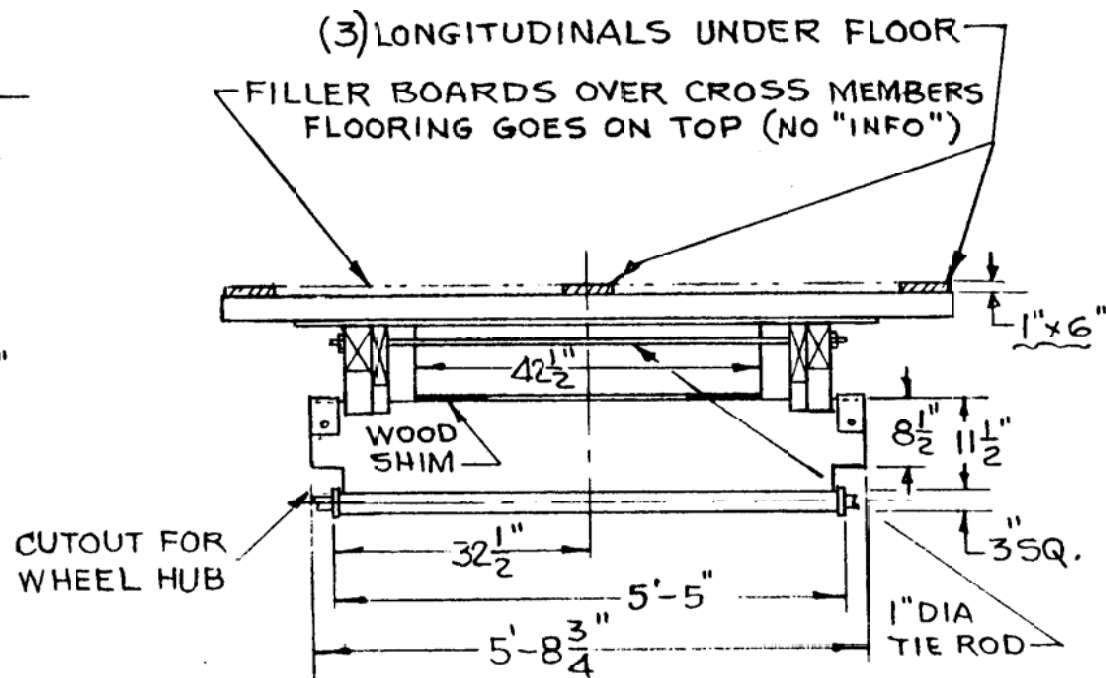
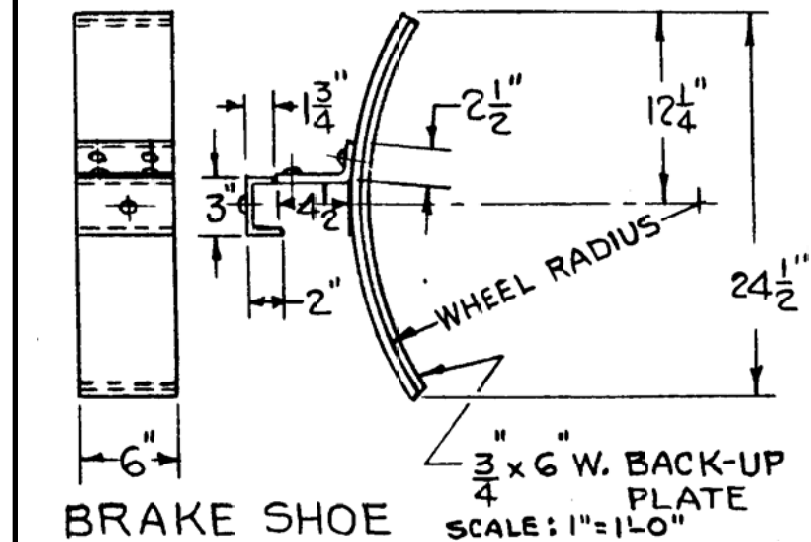
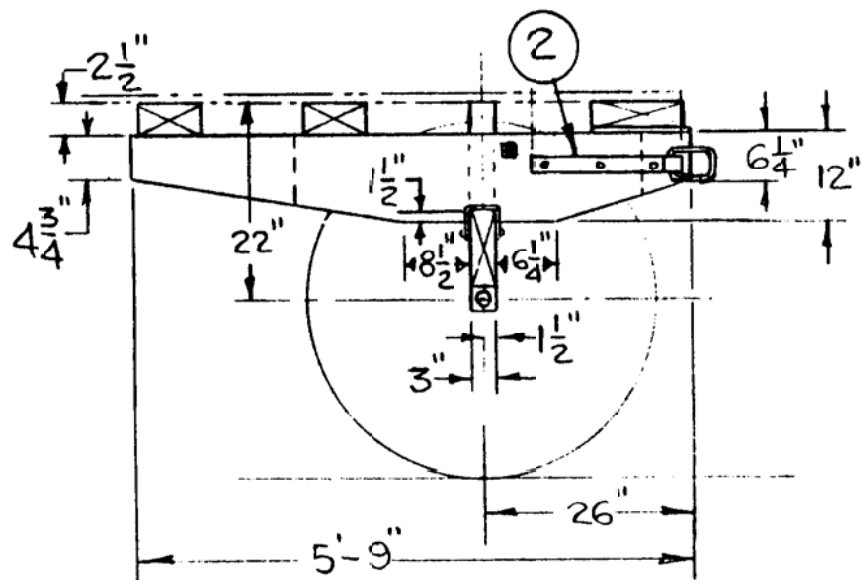
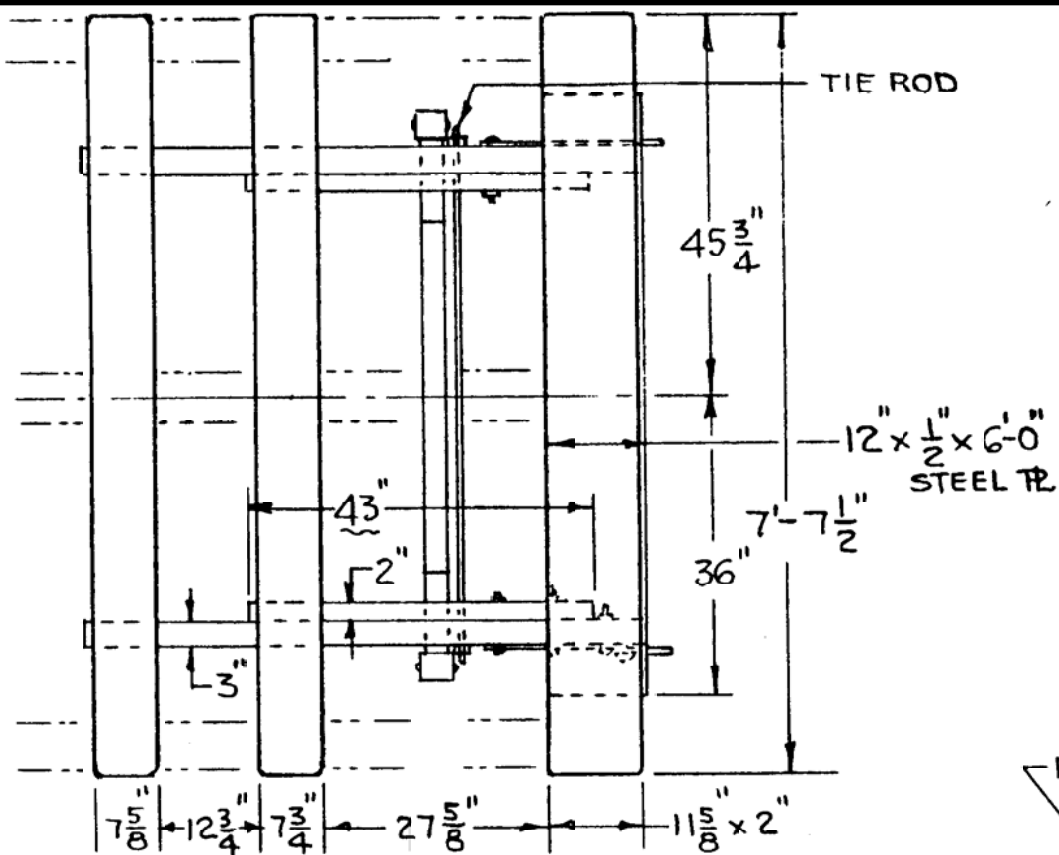
Hagenbeck-Wallace Baggage Wagon No. 38

Pg 5 of 11

SCALE: 1/2" = 1'

SCANNED & REVISED:
03/19/03

DRAWING NUMBER
#0198



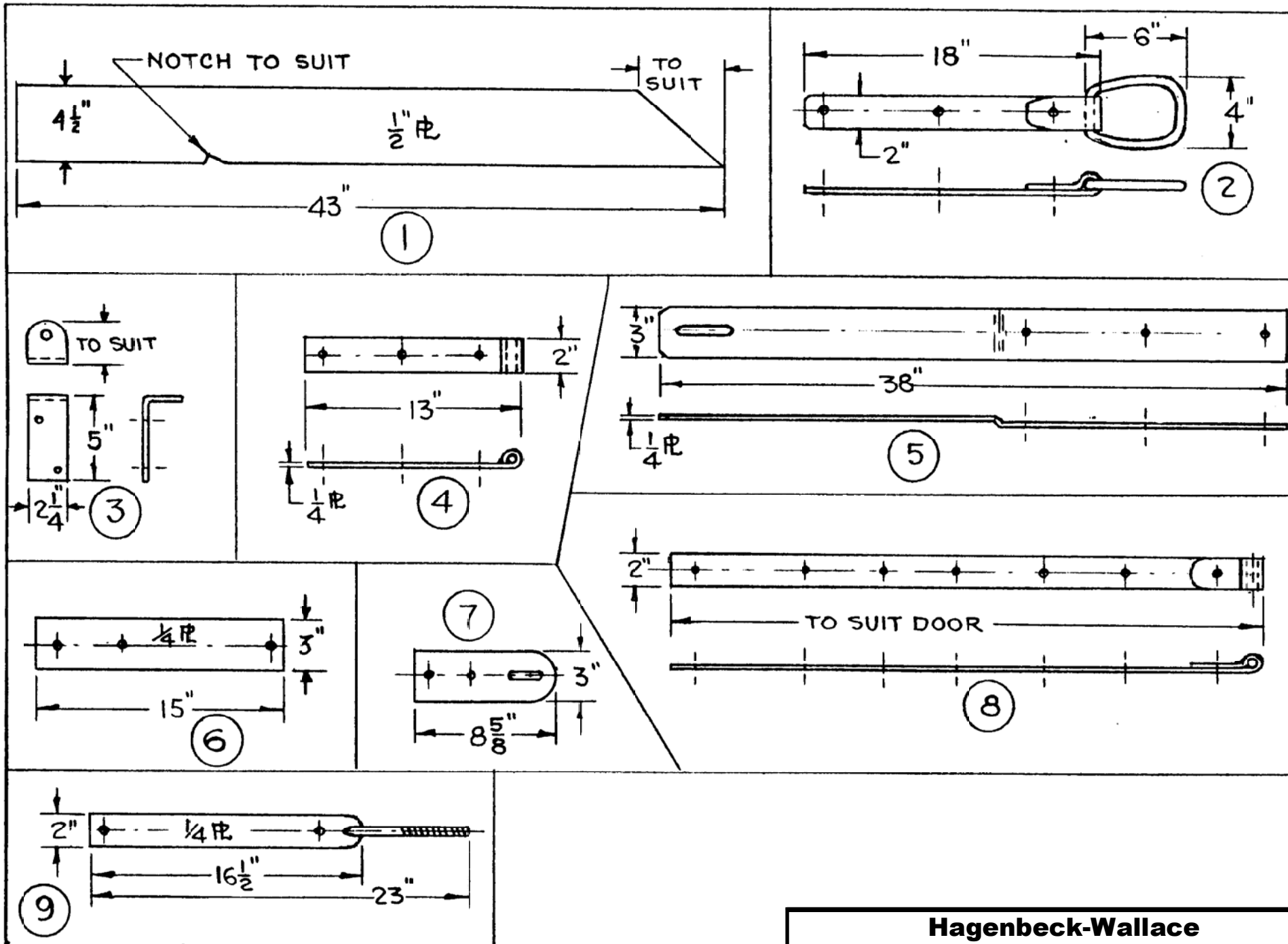
Hagenbeck-Wallace
Baggage Wagon No. 38

Pg 6 of 11

SCALE: 1/2" = 1'

SCANNED & REVISED:
03/19/03

DRAWING NUMBER
#0198



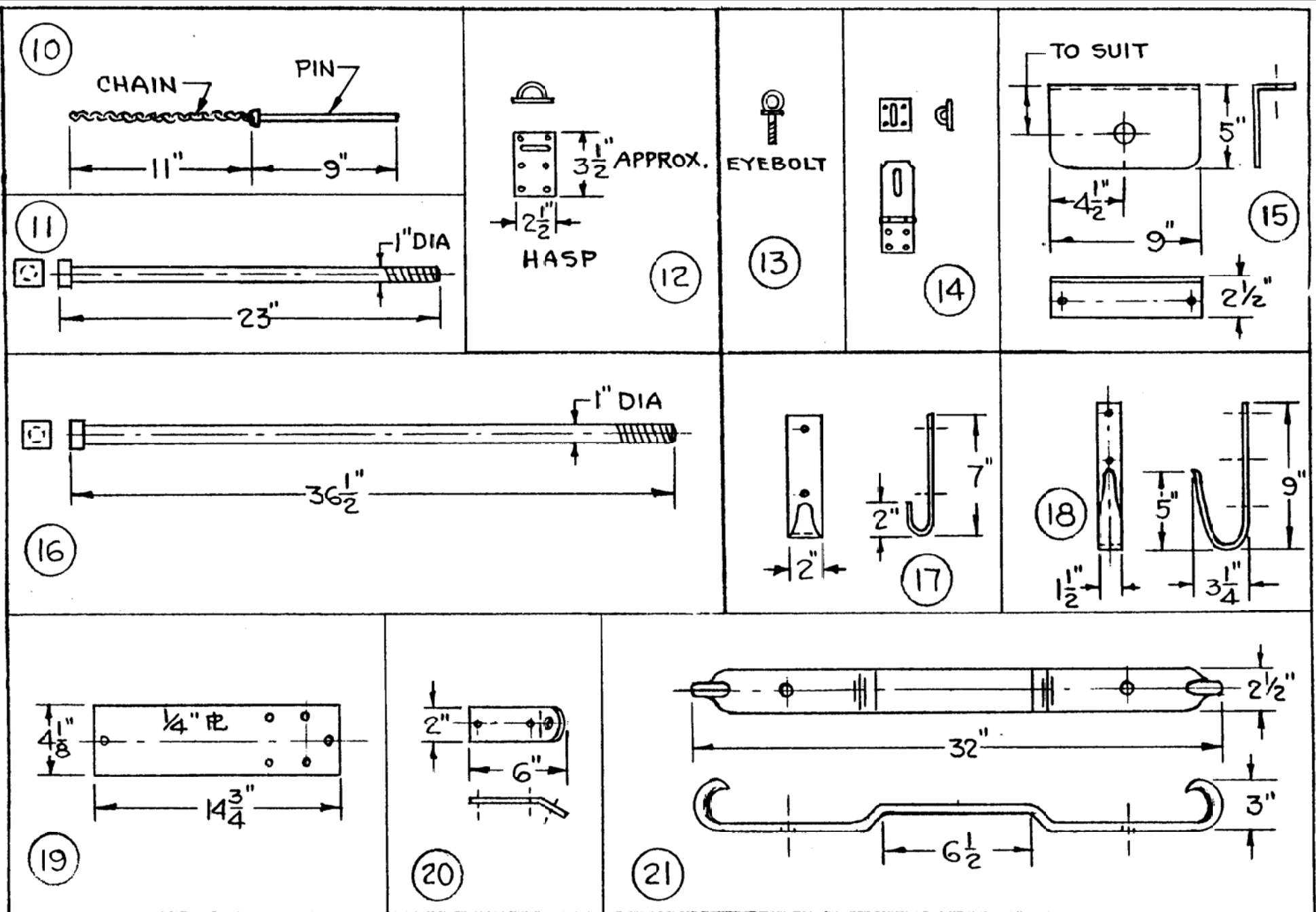
**Hagenbeck-Wallace
Baggage Wagon No. 38**

Pg 7 of 11

SCALE: 1/2" = 1'

SCANNED & REVISED:
03/19/03

DRAWING NUMBER
#0198



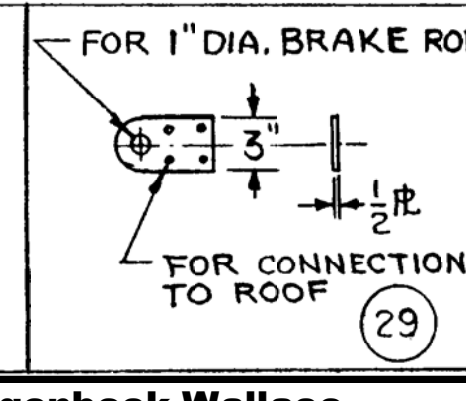
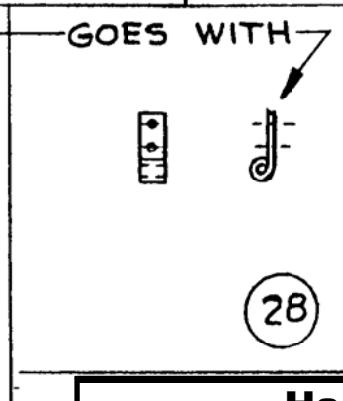
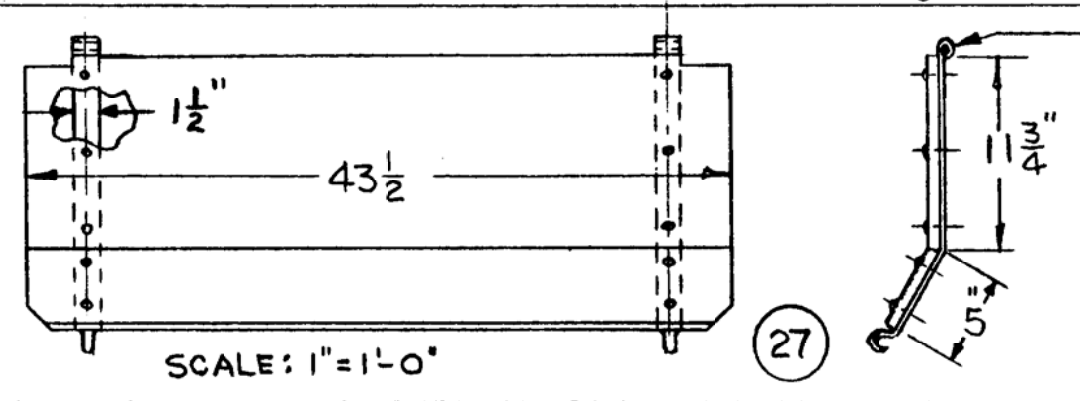
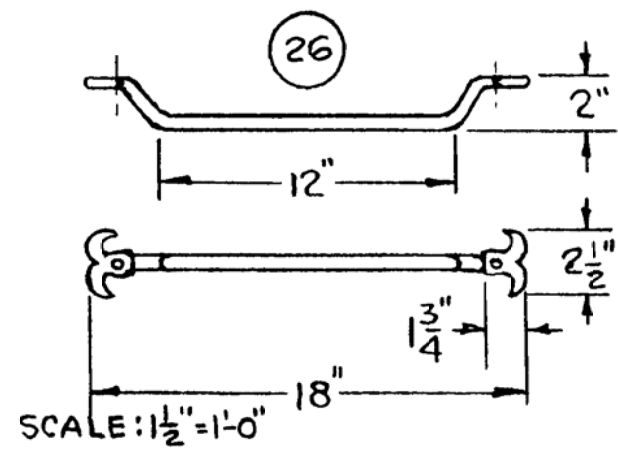
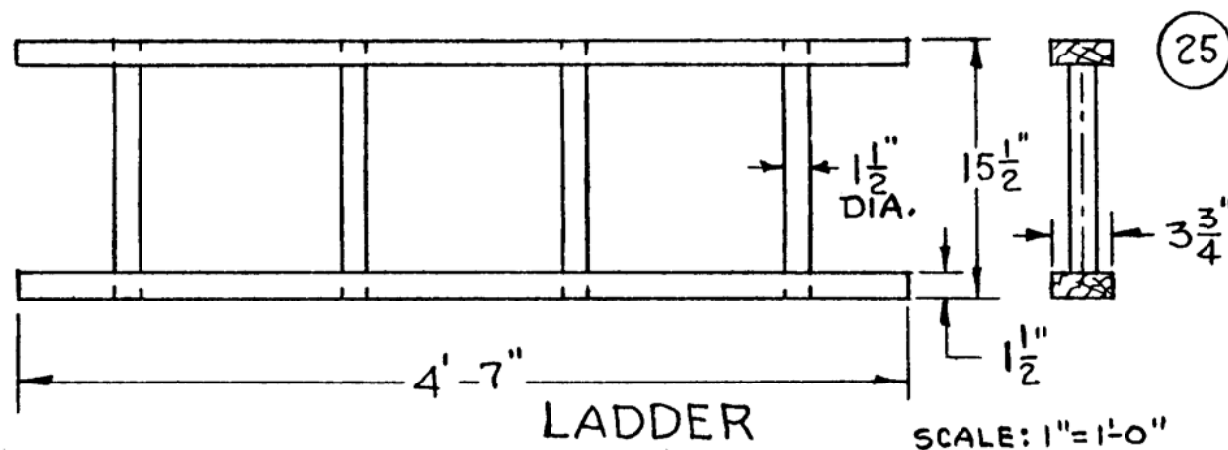
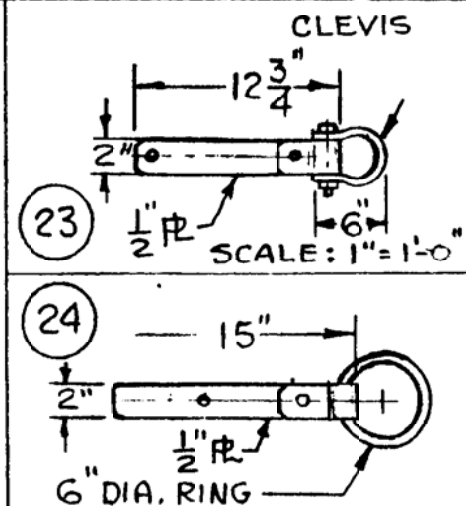
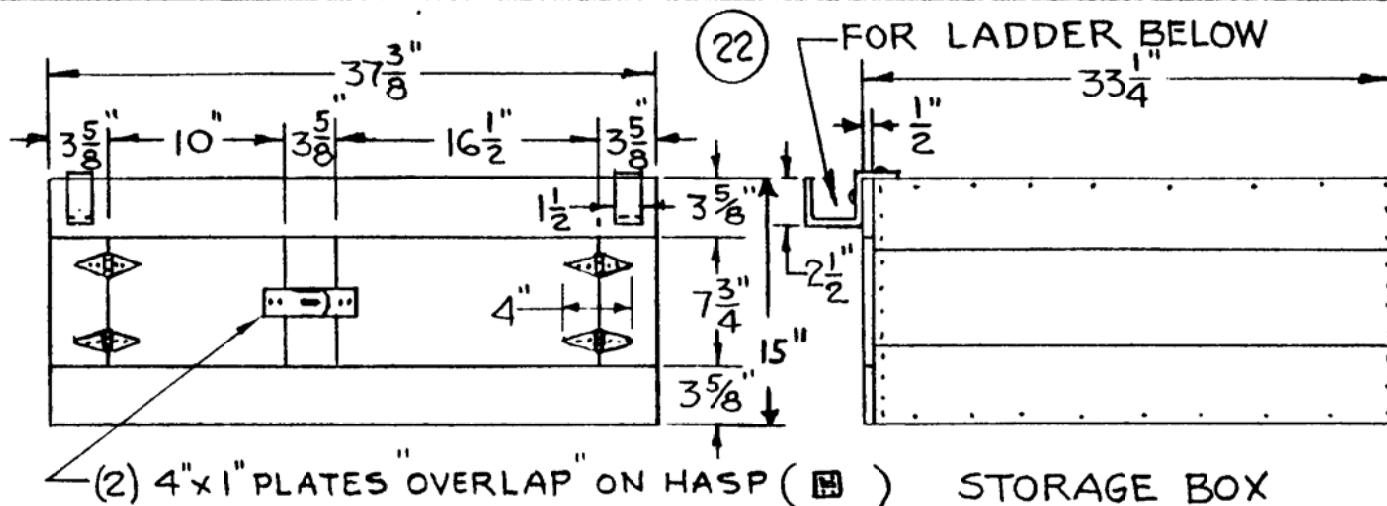
Hagenbeck-Wallace Baggage Wagon No. 38

Pg 8 of 11

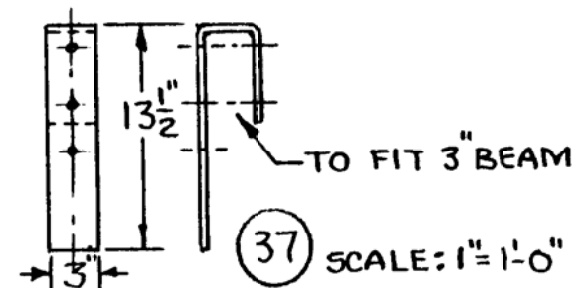
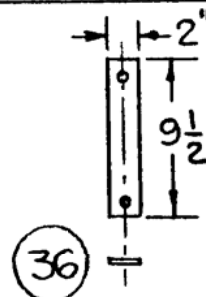
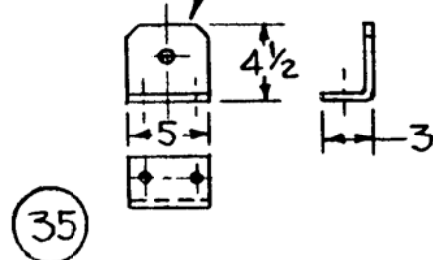
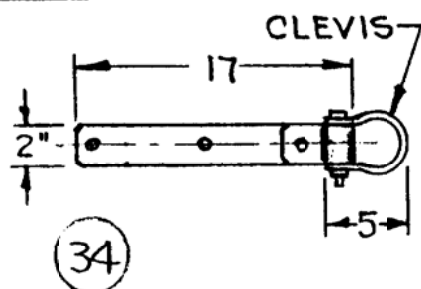
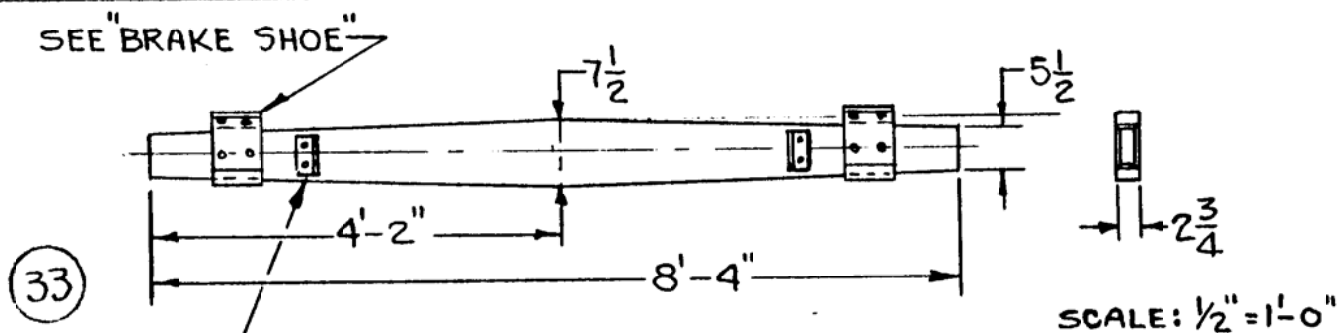
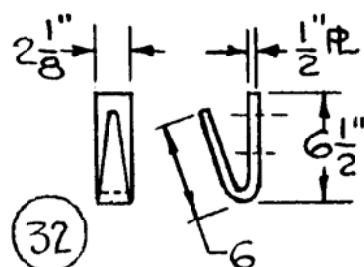
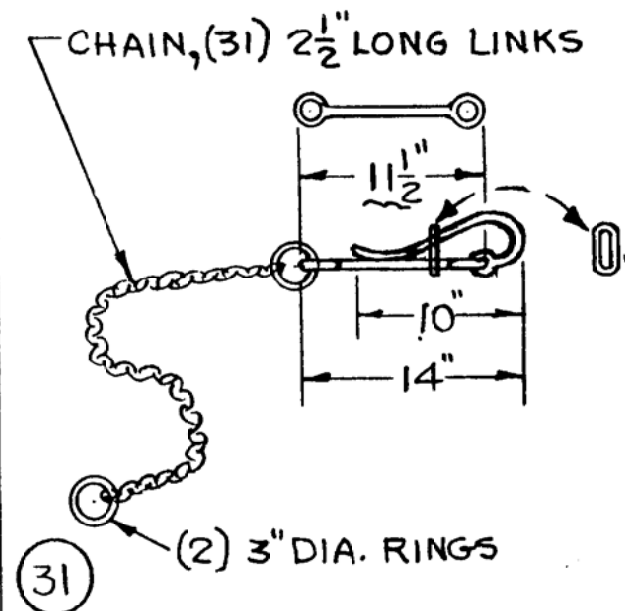
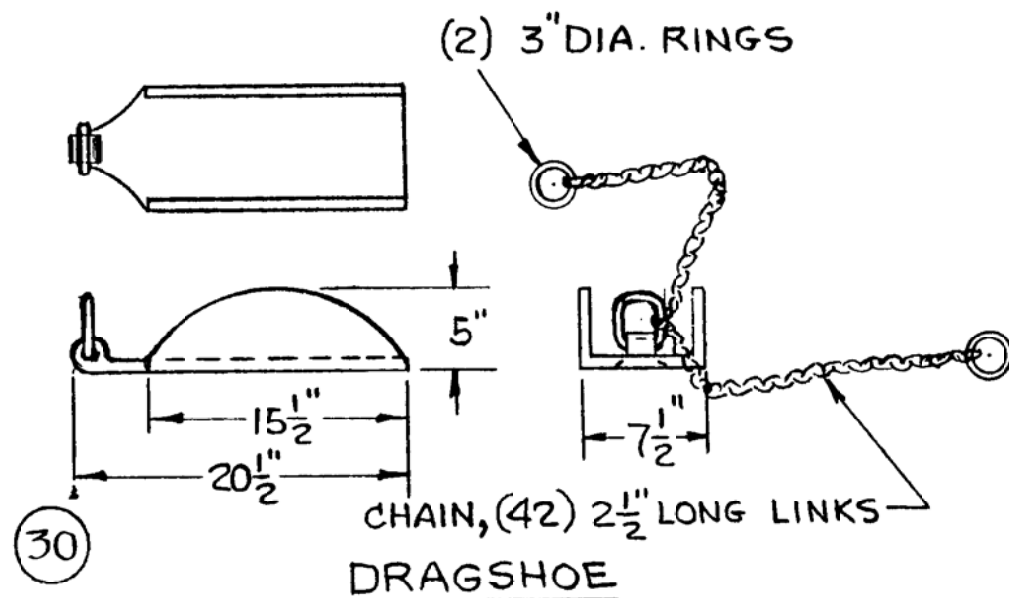
SCALE: 1/2" = 1'

SCANNED & REVISED:
03/19/03

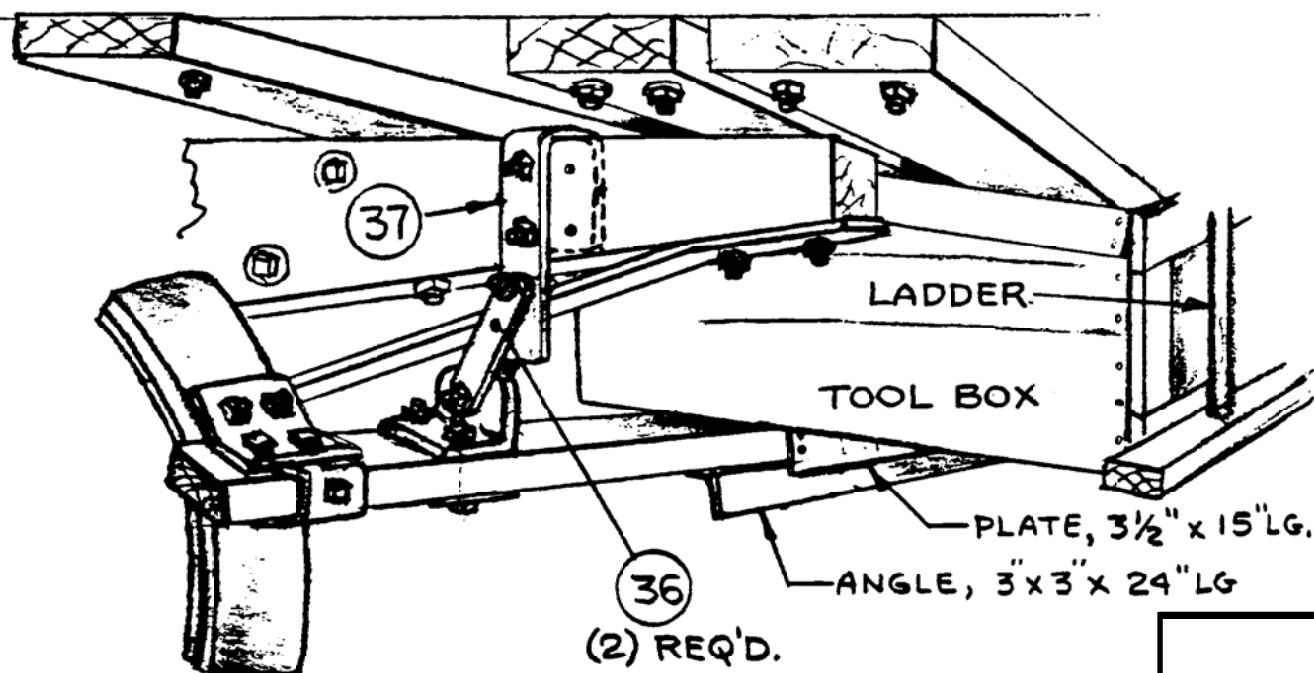
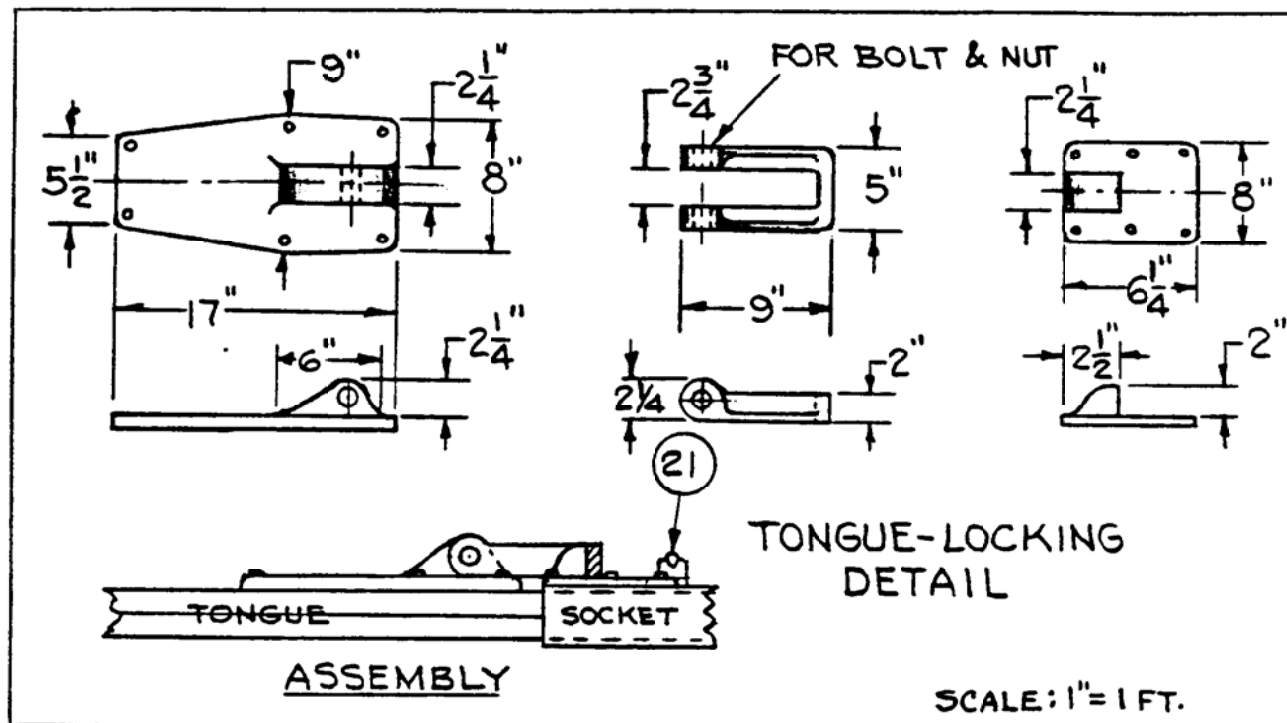
DRAWING NUMBER
#0198



Hagenbeck-Wallace Baggage Wagon No. 38



**Hagenbeck-Wallace
Baggage Wagon No. 38**



BRAKE DETAIL

**Hagenbeck-Wallace
Baggage Wagon No. 38**

Pg 11 of 11

SCALE: 1/2" = 1'

SCANNED & REVISED:
03/19/03

DRAWING NUMBER

#0198