

TOP VIEW

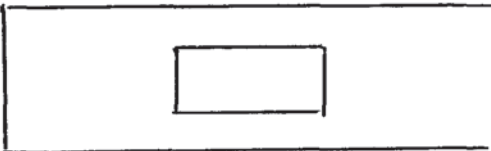
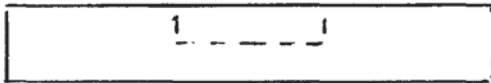


Fig. 1 routed out



FRONT VIEW

TOP VIEW

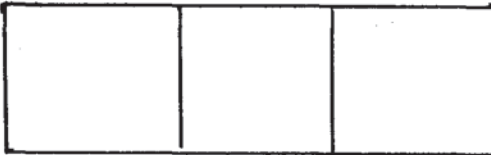
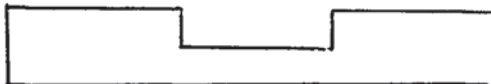


Fig. 2 grooved out



FRONT VIEW

The model builder often has a number of pieces of stock to be cut the same length. To save time of measuring each piece, as well as cutting all the exact length, a fence and stop block permits this to be accomplished.

The miterbox is set into a base with its bed flush with the top of the base. It can be routed out to receive the box as shown in Fig. 1. If no router is available the area can be routed out with a circle saw as shown in Fig. 2.

A third alternative is to use three pieces of stock but the top pieces have to be the same thickness as the miterbox bed. [see Fig. 3] Fig. 4 shows a top view of the completed assembly. The fence can be angle iron or wood as long as the stock is square. Fig. 5 illustrates the block clamped in place.

Determine the length of the piece needed and set the stop at this length. Place stock against it and cut the piece. Continue in this until the desired number of pieces needed are cut.

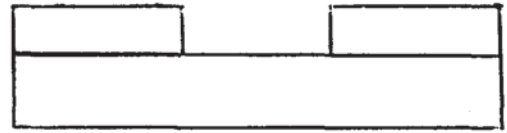


Fig. 3
Three piece construction
Front view

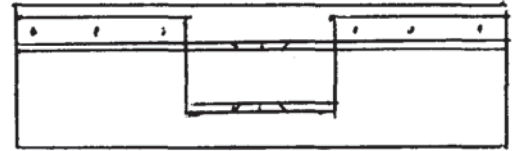


Fig. 4
top view completed assembly

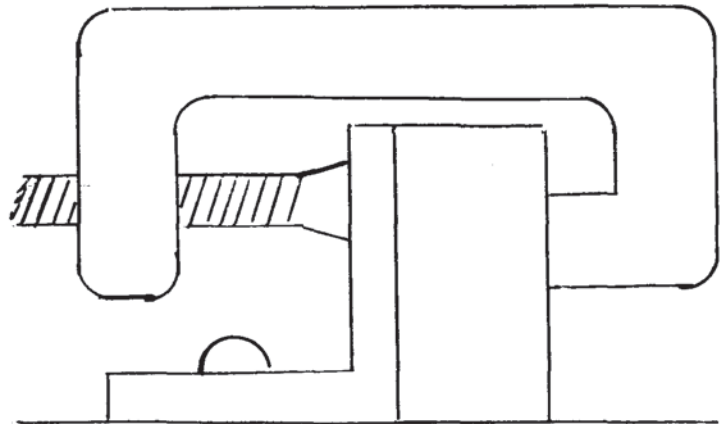


Fig. 5
end view clamp & block in place

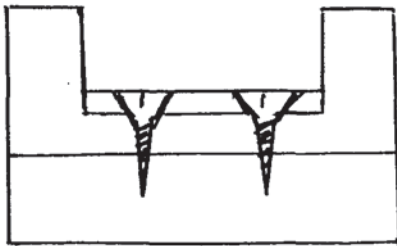


Fig. 1
Metal box mounted on wood base
(cross section view)

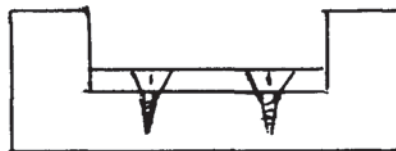


Fig. 2
Wooden miterbox overlay screws onto
wooden base
(cross section view)



Fig. 3
Screws placed outside of cutting range
(top view)

After repeated use the bed of the small miterbox becomes rough and does not permit a smooth cut. To overcome this, as well as increase the life of your miterbox, an overlay of 1/8th inch plywood or basswood can be placed on the miterbox bed as shown in above sketches.

Miter Box Tips

DATE: N/A

SCALE: None

SCANNED & REVISED:
08/08/03

Pg 1 of 1

Circus Model Builders

Drawn By
Karl Hartisch

DRAWING NUMBER
#0261

XXXX

XXXX			
Pg 2 of 4	SCALE: 1/2" = 1'	SCANNED & REVISED: 01/21/03	DRAWING NUMBER #0xxx