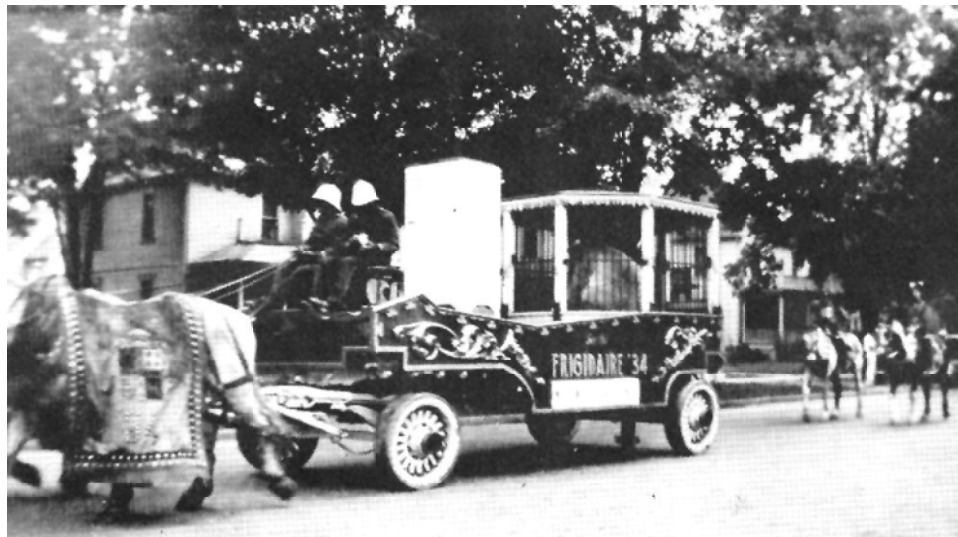


It is a strange one. I cannot say it is a beauty but still it does hold some interest. There is no doubt that this was one of the commercial units used on the show. The other was the Chevrolet display which took three special built wagons. Of historical value there is very little I can offer. Some historians claim that the bed of this wagon was once the Goliath Wagon. Another claim was that this appeared on the Terrill Jacobs Gilbert Bros. Circus and was built up to a regular baggage wagon. This was then used as the arena wagon. On both claims, you cannot prove it by me. I really believe this wagon was built special for this display.

Another note of interest, the Frigidaire unit was placed on a turntable and as the wagon was paraded through town, the unit revolved. With all due honesty, I do not know how this operated. Probably some of our old timers can come forward and let us know how this operated. For the time being, I have added an idea that might be applied to make this operate. The use of a hand crank could do it.

The photos used for this project come from the Don Smith collection (full side view) and the others are from my collection (Eddie Jackson Photos). Our thanks to Don for the wonderful clear photo.

The blankets for the horses were very flashy. They carried the G.M. coat of arms and the lead blankets has "See the", the second pair had "Frigidaire" and the third pair had -



This Eddie Jackson Photo from Allaire Collection caught the Frigidaire and Polar Bear Cage in parade giving a good view of the Wagon, Bear and Blanket on the horse.



Full side view of the 1934 Frigidaire and polar bear cage wagon on the Hagenbeck-Wallace Circus. [Don Smith photo collection]



Photo above shows close-up of the back side of the wagon and polar bear den. Also good view of the carved icicles. [Eddie Jackson photo]

Hagenbeck-Wallace Circus Frigidaire & Polar Bear Cage Wagon

DATE: 1934

SCALE: 1/2" = 1'

SCANNED & REVISED:
05/03/03

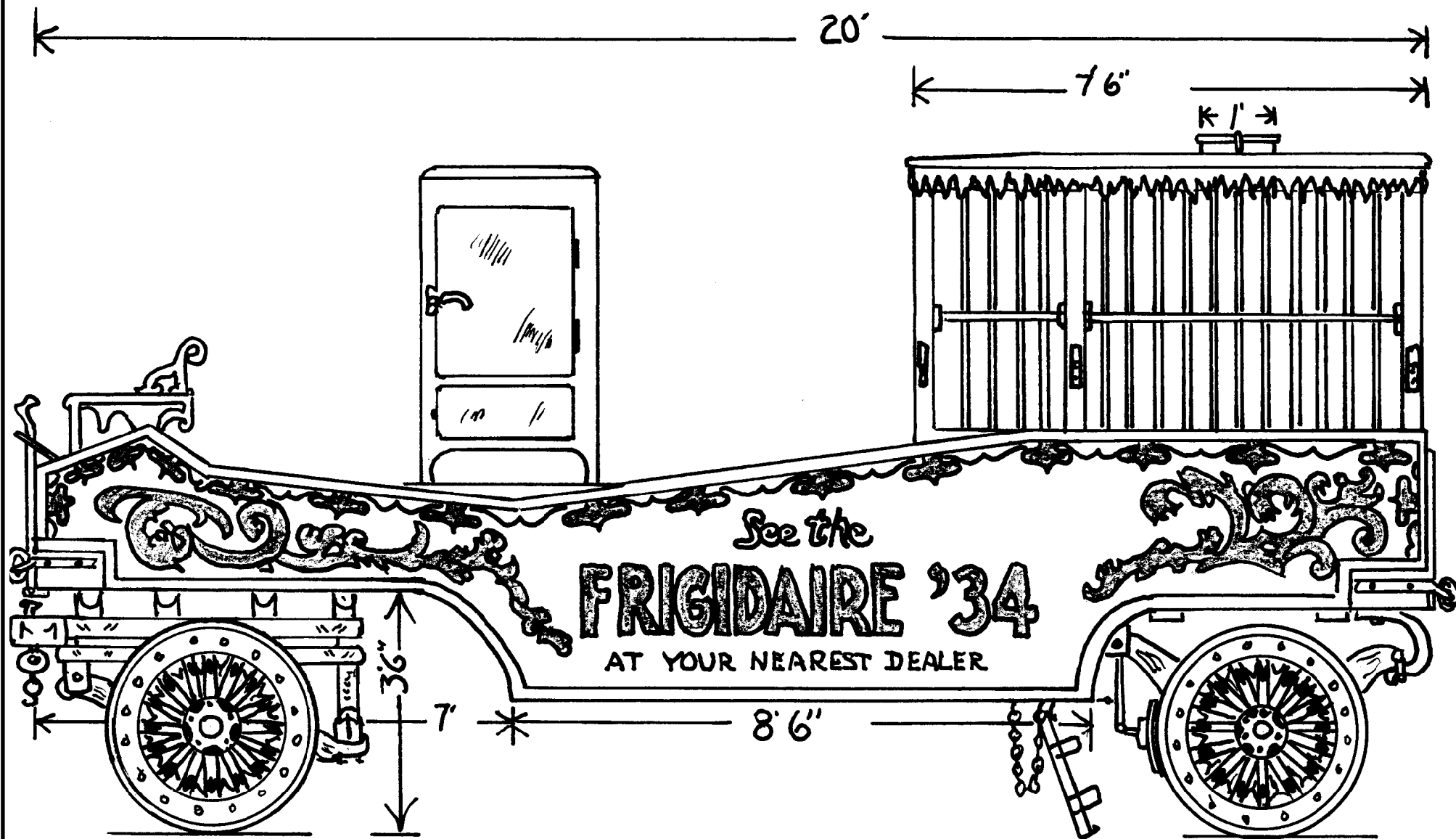
Pg 1 of 5

Circus Model Builders

Drawn By
Maurice J. Allaire

DRAWING NUMBER

#0237



Wagon Color Scheme

The wagon was red with gold carving and lettering. The undergear was white, while the cage was white with blue and white trim. All harness was black. The pom poms are red, white and blue. Horse blankets were gold with red and black trim with gold fringe.

Hagenbeck-Wallace Circus Frigidaire & Polar Bear Cage Wagon

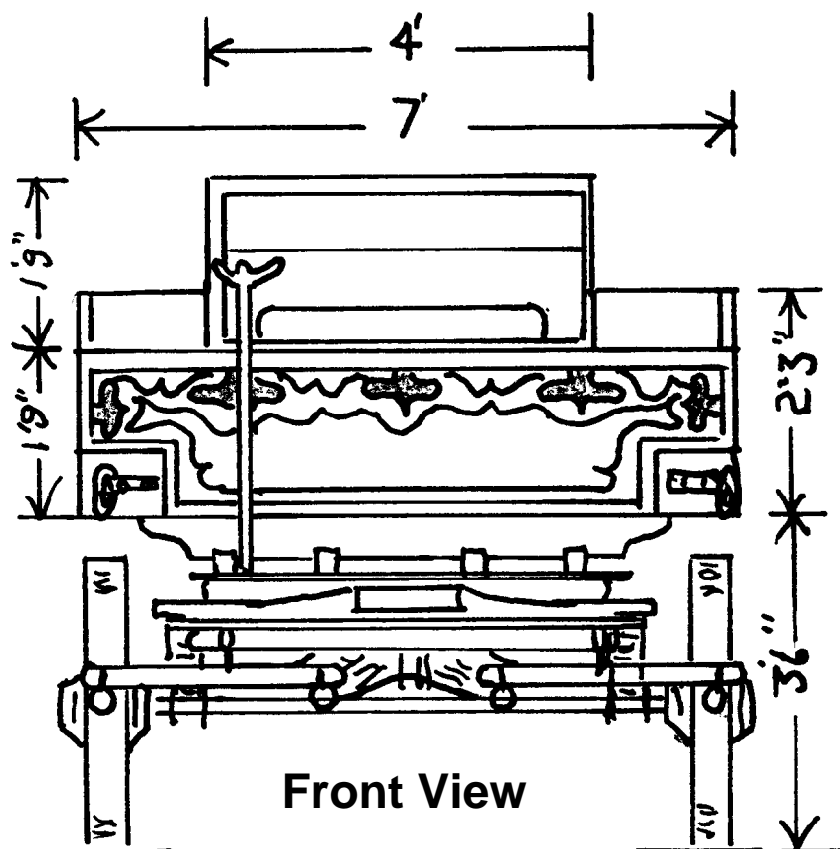
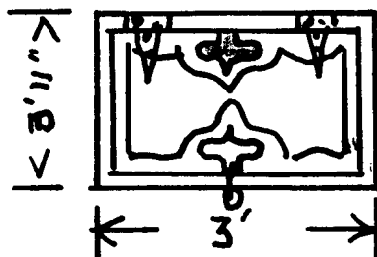
Pg 2 of 5

SCALE: 1/2" = 1'

SCANNED & REVISED:
05/03/03

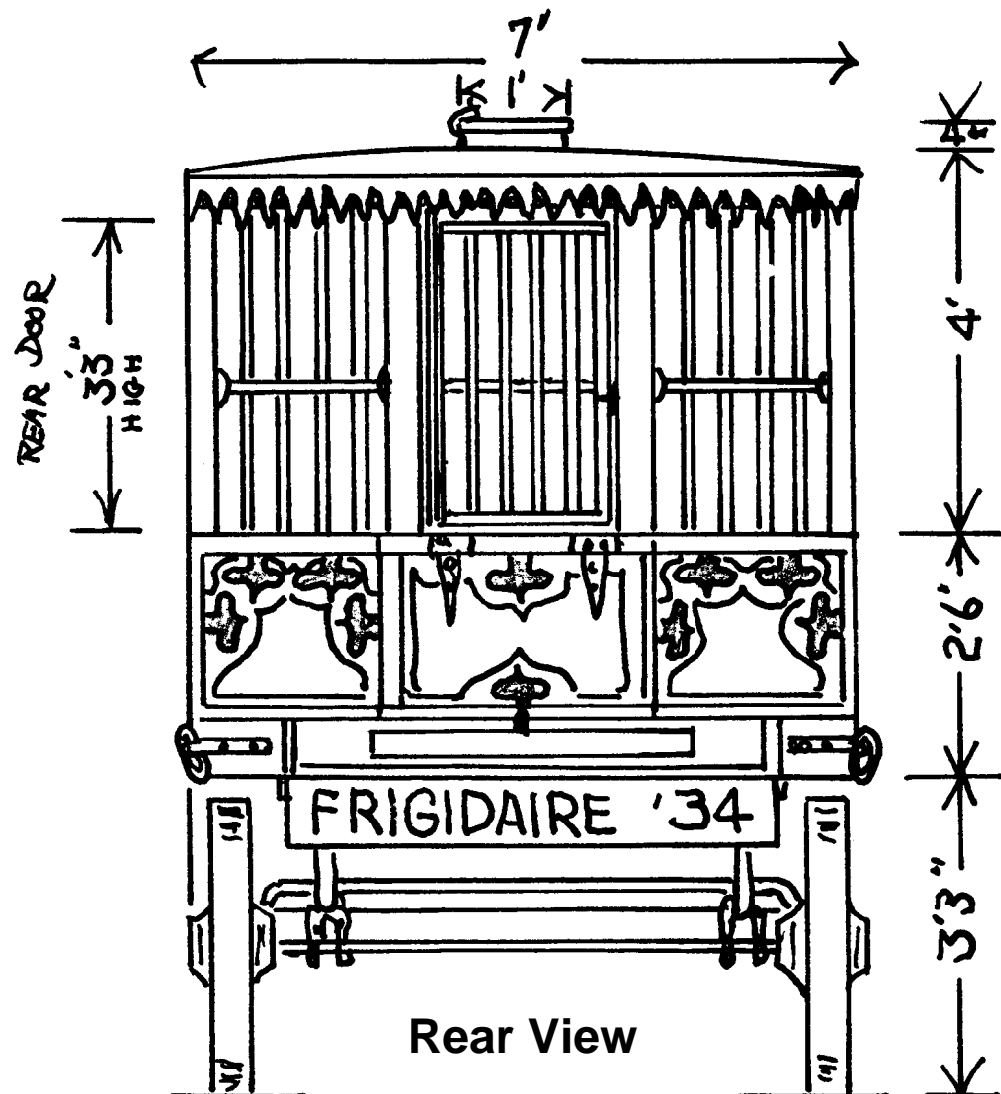
DRAWING NUMBER
#0237

TRAP DOOR FOR STORAGE
AT CENTER OF REAR OF WAGON



Front View

REAR
DOOR
1'3" WIDE



Rear View

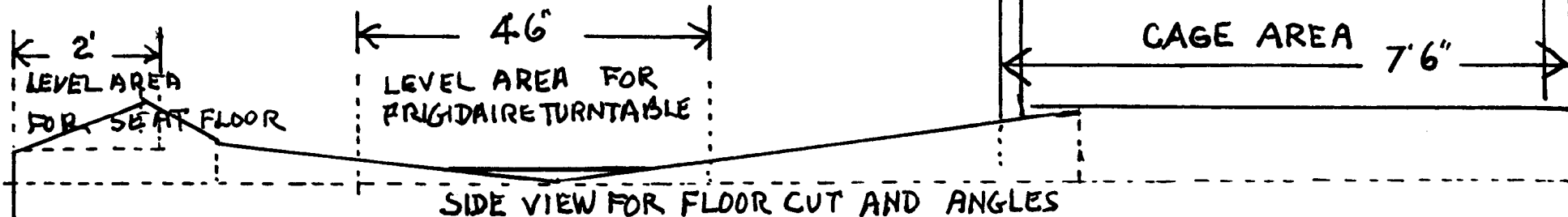
**Hagenbeck-Wallace Circus
Frigidaire & Polar Bear Cage Wagon**

Pg 3 of 5

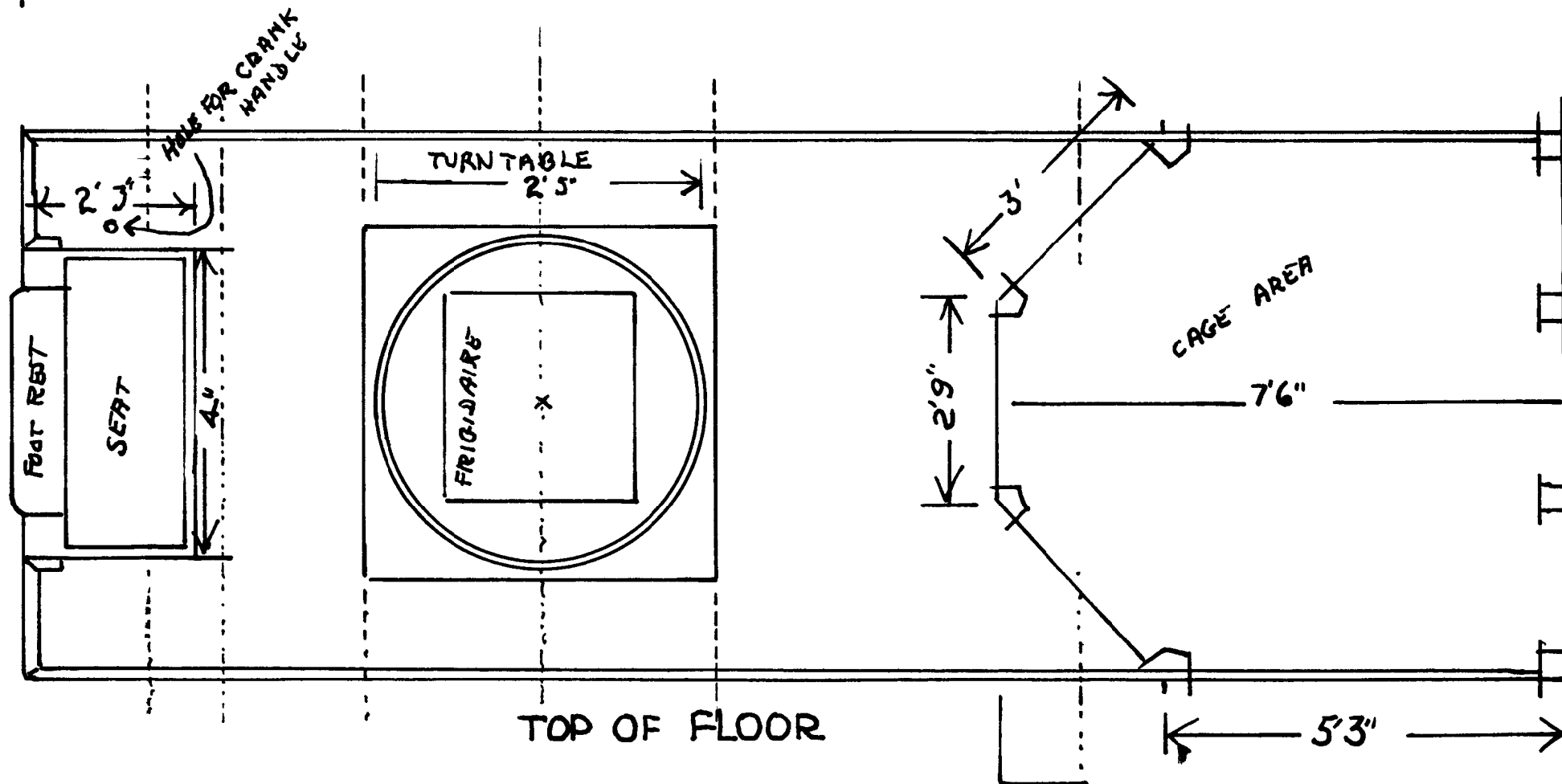
SCALE: 1/2" = 1'

SCANNED & REVISED:
05/03/03

DRAWING NUMBER
#0237



NOTE = ALL DOTTED LINES REPRESENTS THE VARIOUS ANGLE CUTS OF THE FLOOR LAYOUT



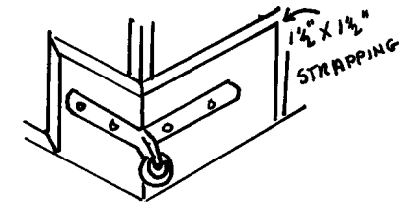
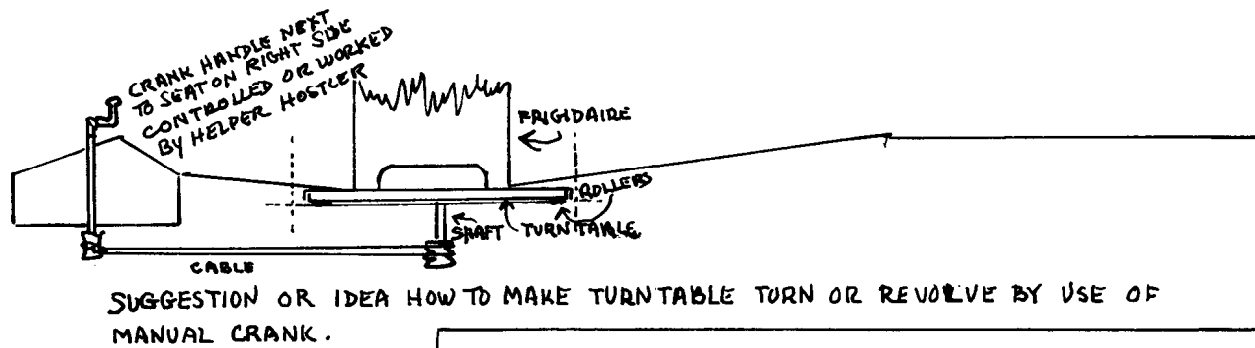
Hagenbeck-Wallace Circus Frigidaire & Polar Bear Cage Wagon

Pg 4 of 5

SCALE: 1/2" = 1'

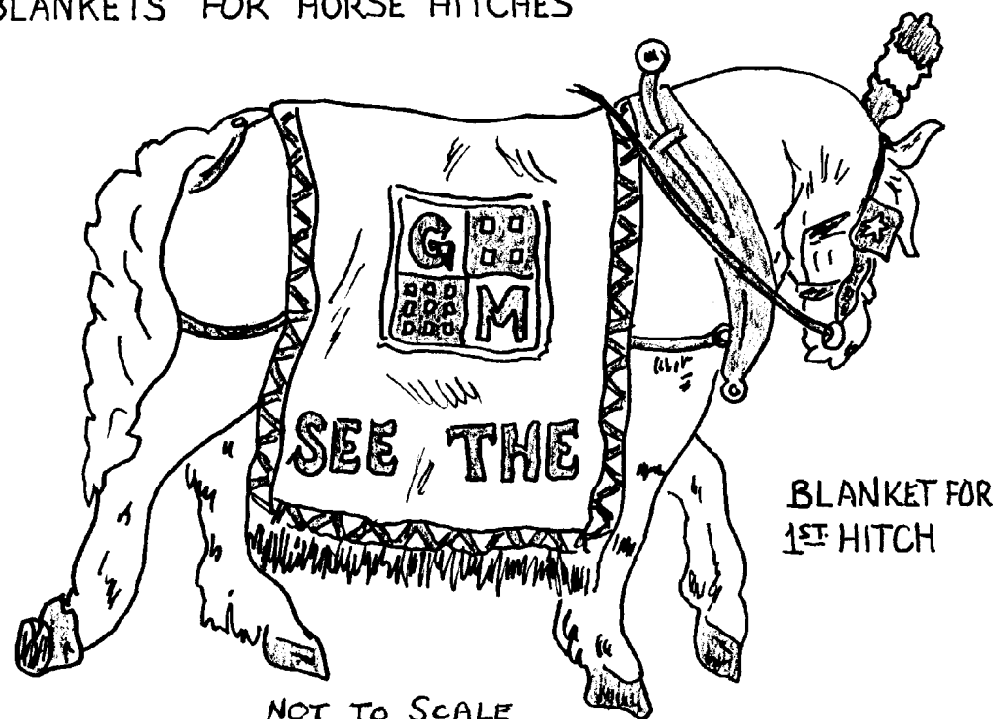
SCANNED & REVISED:
05/03/03

DRAWING NUMBER
#0237



HOOK ROPE PLATE 'V' TYPE.
Moulding DOES NOT TOUCH THE
HARDWARE - THIS IS SAME ON
FOUR CORNERS

BLANKETS FOR HORSE HITCHES



This Page NOT to Scale

FOR ICICLES EFFECT ON TOP EDGE
OF ROOF-DO THIS =

- (1) (PAINT BOARD LIGHT BLUE) TAKE 6" BOARD - SET AROUND TOP EDGE OF CAGE
- (2) ~~~~~ CUT OUT ICICLES FROM CARDBOARD
PAINT THIS WHITE
- (3) ~~~~~ GLUE ON SIDE OF BOARD
WHITE ICICLES OVER BLUE BOARD

FRIGIDAIRE

ON BLANKET FOR
2ND HITCH

' 34

ON BLANKET FOR
3RD HITCH

**Hagenbeck-Wallace Circus
Frigidaire & Polar Bear Cage Wagon**

Pg 5 of 5

SCALE: 1/2" = 1'

SCANNED & REVISED:
05/03/03

DRAWING NUMBER
#0237