

Bannerline

Step right this way ladies and gentlemen of CMB and enjoy this centerfold, which can give you a 1/4 inch bannerline for your sideshow. As a result of many requests for additional banners after the cover design of last November-December LCW, here is a reprint of the original plus the balance of the line. Transfer the designs to a light weight canvas and paint them with acrylics or oils or mount them on light weight cardboard and color them with your favorite medium. Following is a suggested color guide or use your own imagination. Remember that they should be very colorful to entice the audience into the show.

The borders were usually bright orange. The floor areas uniformly light tan. The other suggested colorings are:

BANNERLINE 1 - JACK THE GIANT - facial features flesh, background - light blue, rear drape - red, Jack's shirt - yellow, Jack's hat and trousers - cream, boots - brown.

BANNERLINE 1 - SERPENTINA - facial features - flesh, background - yellow, rear drape - light blue, costume - light yellow with brown spots, snakes - greenish grey with rust markings.

BANNERLINE 3 - MANDRAKE - facial features - deep tan or olive, background - blue, crystal ball, skeleton and ghost - white, turban - purple, shirt - yellow, cape - deep red, trousers - varying shades of blue, lamp - yellow.

BANNERLINE 4 - BABY JANE - background - light green, rear drape - deep red, facial features - ruddy flesh, Baby Jane's hair - blonde, dress - light blue.

BANNERLINE 5 - SANDOW -background - light green, rear drape - yellow, flesh features Leopard skin - yellow with brown spots.

BANNERLINE 6 - TAHITIAN DANCERS - Deep tan features, skylight blue, torch flames - yellow with red centers, trees - dark green, leis and flowers - your choice of pinks, orchids, yellows, etc.

CENTER BANNER LINE - CIRCUS ANNEX - Yellow background with red face letters, shaded in blue.

BANNERLINE 7- PROFESSOR PYRO - Flame background center yellow, 2nd band - yellow-orange, outer band - red, fires - yellow with red centers, facial features - flesh, costume - light blue with red belt.

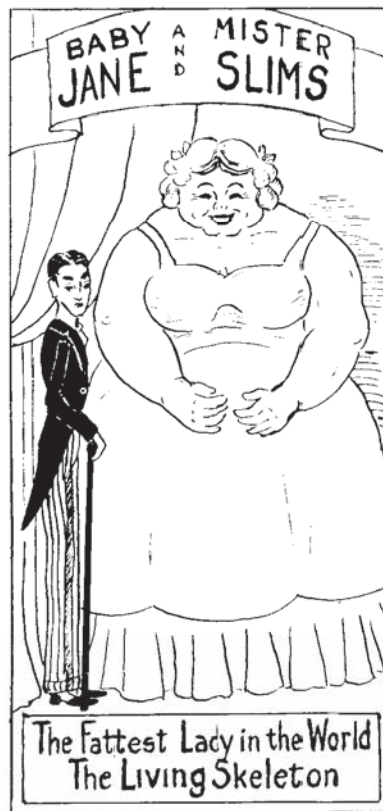
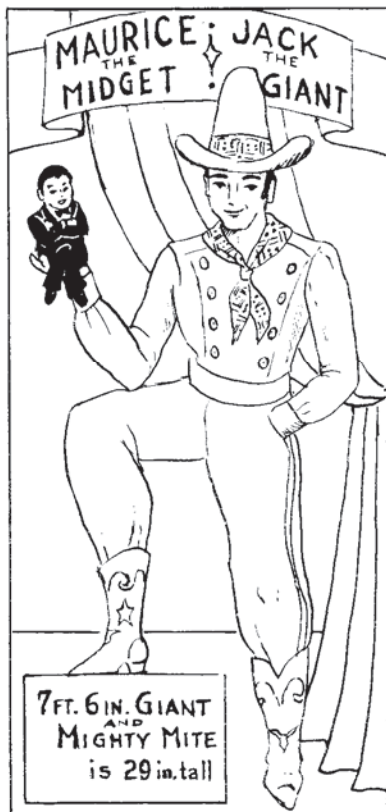
BANNERLINE 8 - JOJO, DOGFACED BOY - facial features - light brown, background - yellow, drapes light blue, uniform jacket - red, trousers - dark blue.

BANNERLINE 9 - ALI RAMA - red drapes, background - light blue, deep tan facial features, costume red and yellow.

BANNERLINE 10 - CHANG & ENG - facial features - light yellow, background - light blue, drapes deep red.

If you want the banners in HO gauge, take the centerfold to a photostat or speed printing shop and tell them you want it reduced one-half. If you want it in 1/2 inch, use the same program.

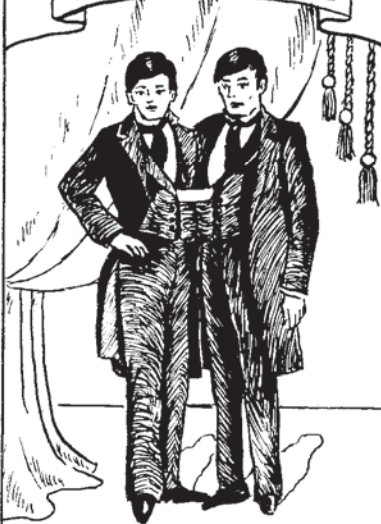
Bannerline			
DATE: None	SCALE: 1/4" = 1'	SCANNED & REVISED: 05/10/02	Pg 1 of 3
Circus Model Builders			
Drawn By Howard Paul			DRAWING NUMBER #0292



Bannerline

CIRCUS ANNEX SIDE ~ SHOW

CHANG and ENG



WORLD RENOWNED
UNITED
SIAMESE TWINS

PROFESSOR
PYRO



FIRE IS HIS FOOD

ALI RAMA
SLEEPS ON NAILS
SWALLOWS KNIVES



JODO DOG FACED
BOY



Bannerline