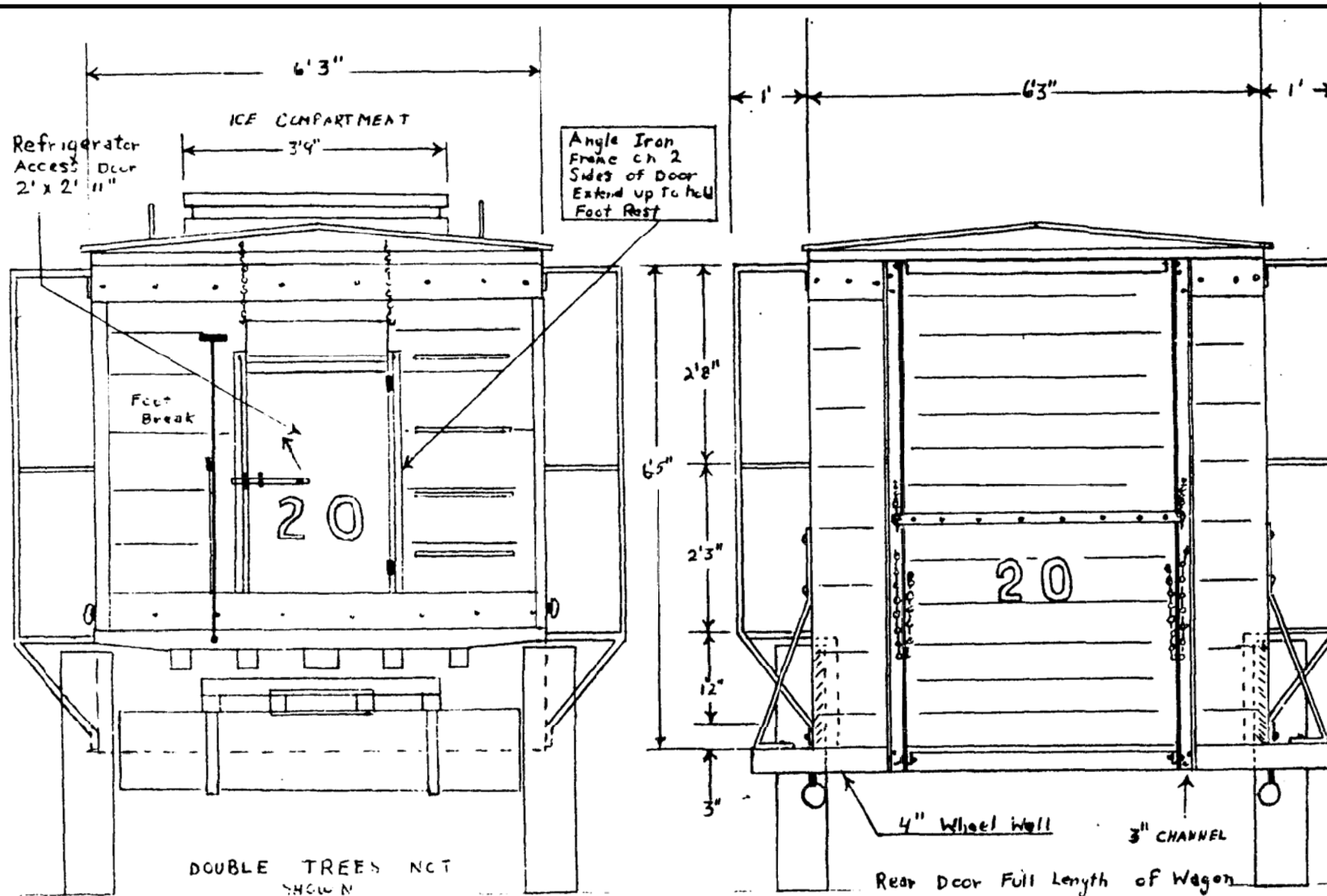


Wagon No. 20 as noted on the plans was used to carry most of the Dining Department, such as the tables, dining top and poles and all equipment needed in the dining top. The front of the wagon carried an ice compartment which was specially built into the wagon. This wagon was used on the 1938 Robbins Show and later on the Cole Bros. Circus where the photos shown were taken. You will notice that over the years the same wagon had changes made to it, depending on the show it was on or the intended use for the wagon. While being used on the Cole Show during the 1940 season, the rack was added to the top of the Baggage Wagon No. 20. Mr. Conover recalls that this wagon and several associated wagons were used until around 1944 or 1945, at which time they were replaced by three wagons, No. 20, 21, and 22. These latter three wagons were used thru 1948 at which time they were replaced by new wagons built by Kentucky Trailer Co. in 1949.

As to the construction of your models of these wagons, you will note that all dimensions shown on the plans are actual sizes and can be converted to any scale you might want to build in. With some serious study of the plans and photos, a very fine model can be built.

Robins Brothers Cookhouse Wagon No. 20			
DATE: 1938	SCALE: 1/2" = 1'	SCANNED & REVISED: 11/26/01	Pg 1 of 3
Circus Model Builders			
Drawn By Albert Conover, CMB 773			DRAWING NUMBER #0178



**Robins Brothers  
Cookhouse Wagon No. 20**

DATE: 1938

SCALE: 1/2" = 1'

SCANNED & REVISED:  
11/26/01

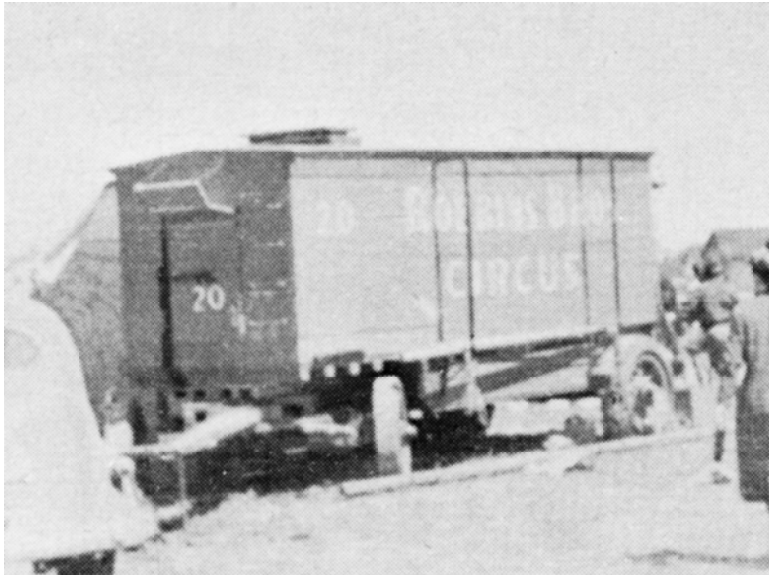
Pg 2 of 3

**Circus Model Builders**

Drawn By  
Albert Conover, CMB 773

DRAWING NUMBER

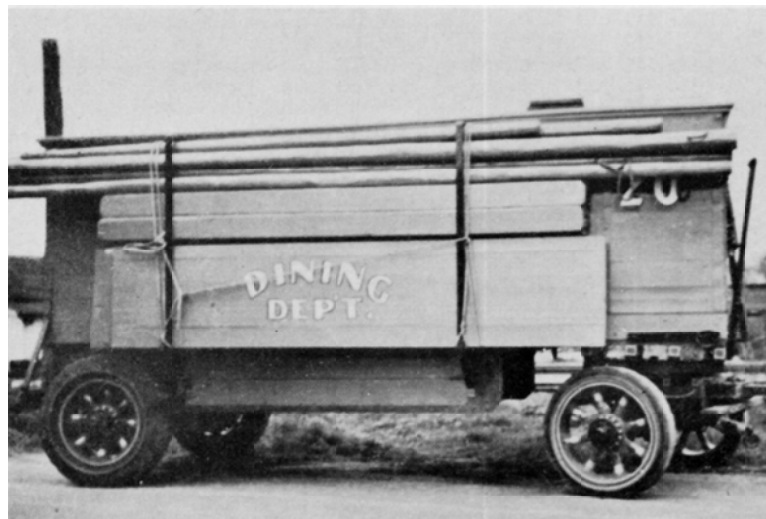
**#0178**



No. 20 as used on Robbins Bros. Circus in 1938.  
Al Conover Collection.



No. 20 as used on Robbins Bros. Circus.  
Wm. Koford collection.



No. 20 as used on the Cole Bros.  
George Piercy Photo



Robbins Bros. Cookhouse Wagon No. 20 as seen on Cole Bros. in 1941.  
Harold Gorsuch Photo.



No. 20 as used on Cole Bros. Note addition of the roof rack.  
Wm. Koford Collection

## Robins Brothers Cookhouse Wagon No. 20

DATE: 1938

SCALE: 1/2" = 1'

SCANNED & REVISED:  
11/26/01

Pg 3 of 3

## Circus Model Builders

Drawn By  
Albert Conover, CMB 773

DRAWING NUMBER  
**#0178**