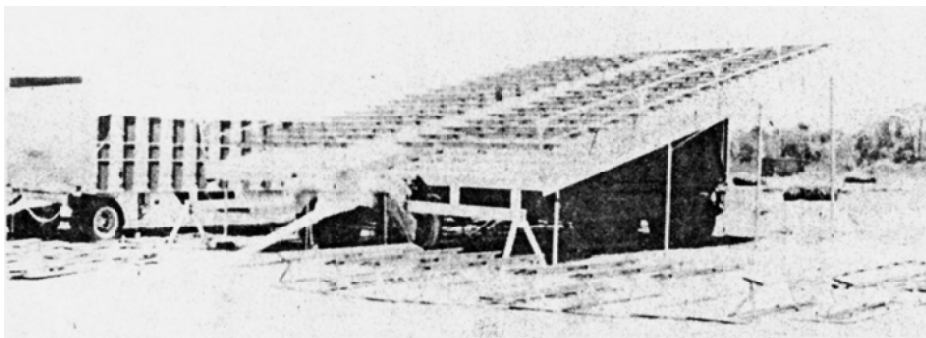
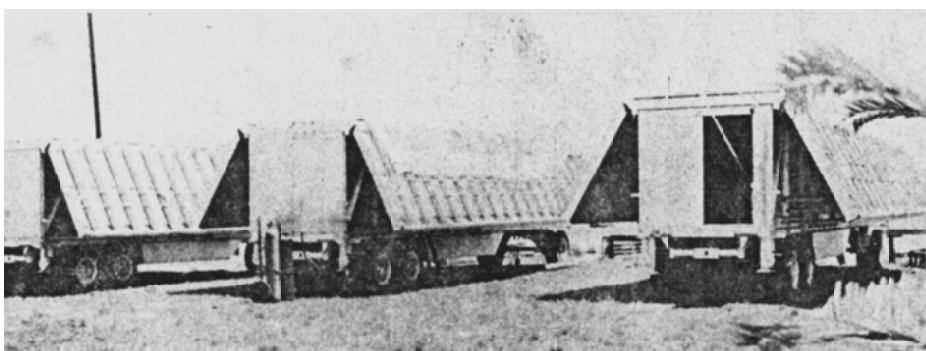




Seat Wagons on the RBBB train in 1950. [W. Johnson Photo]



Ringling Seat Wagons (Blues) in the open and closed position



This plan brings you pictures and drawings of the Ringling Bros. Barnum & Bailey Combined Shows Seat Wagons. These wagons were designed by Art Concello and were first used on the show in 1948 until their closing of the outdoor unit in 1956. They were built entirely of steel except for the wooden chairs and of course the rubber tires. The length of the wagons was 35' and they were 9 wide giving 36' of seating when the wings were spread. The actual floor of the wagon was 6' wide. The pivot point is located 8' from the rear of the wagon on which the deck tilts forward or downward. The wings were raised first by use of an arm and "worm-shaft" which was turned by a power takeoff mounted on a jeep. The front end was raised slightly after the wings were raised and the posts or props holding up the front end were removed and the front end dropped by power. The wagons were then leveled by use of jacks attached to the wagons and then metal poles were set along the outside edges of the wings to hold them up. The inside of the wagons were loaded with props and other big top paraphernalia and also carried the trunks of the performers who used that particular wagon as their dressing room when the seats were set up. When the 5 pole Big-Top was used there were 18 of these wagons carried for reserved chairs and 8 wagons carried for general admission or "Blues Seats."

Models of these wagons could be built in a set up position and mounted permanently if desired or could be made workable perhaps dispensing with the worm screws and gears which would be quite a challenge especially in the small scales. Some of the wagons built in traveling position would look especially nice on the flat cars.

Our thanks go to Mr. William Cooker for these plans.

#### Note from the Superintendent of Plans

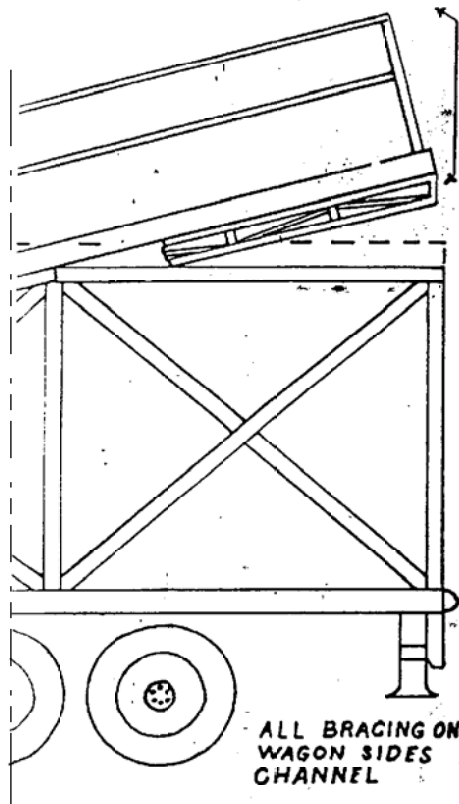
Additional photos have been added to this plan due to the poor quality of the plans library original.

### RBBB

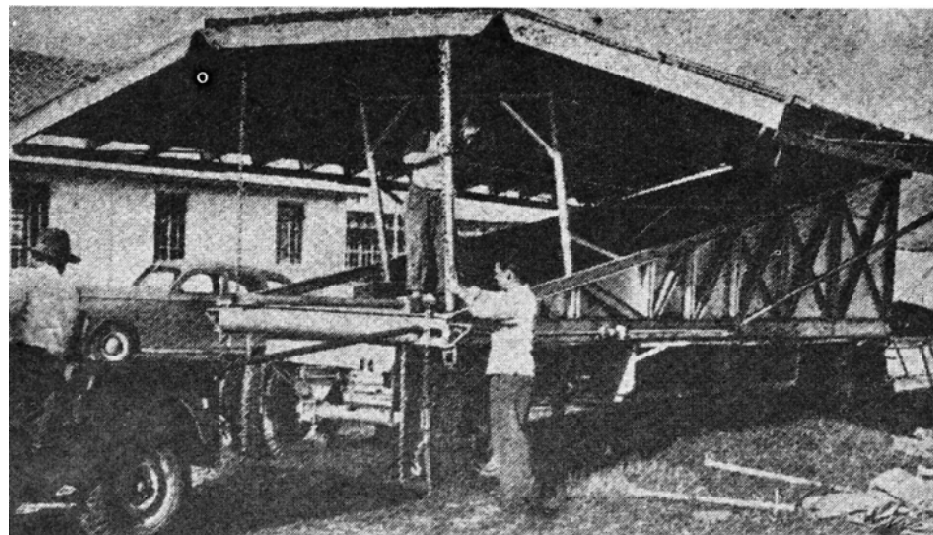
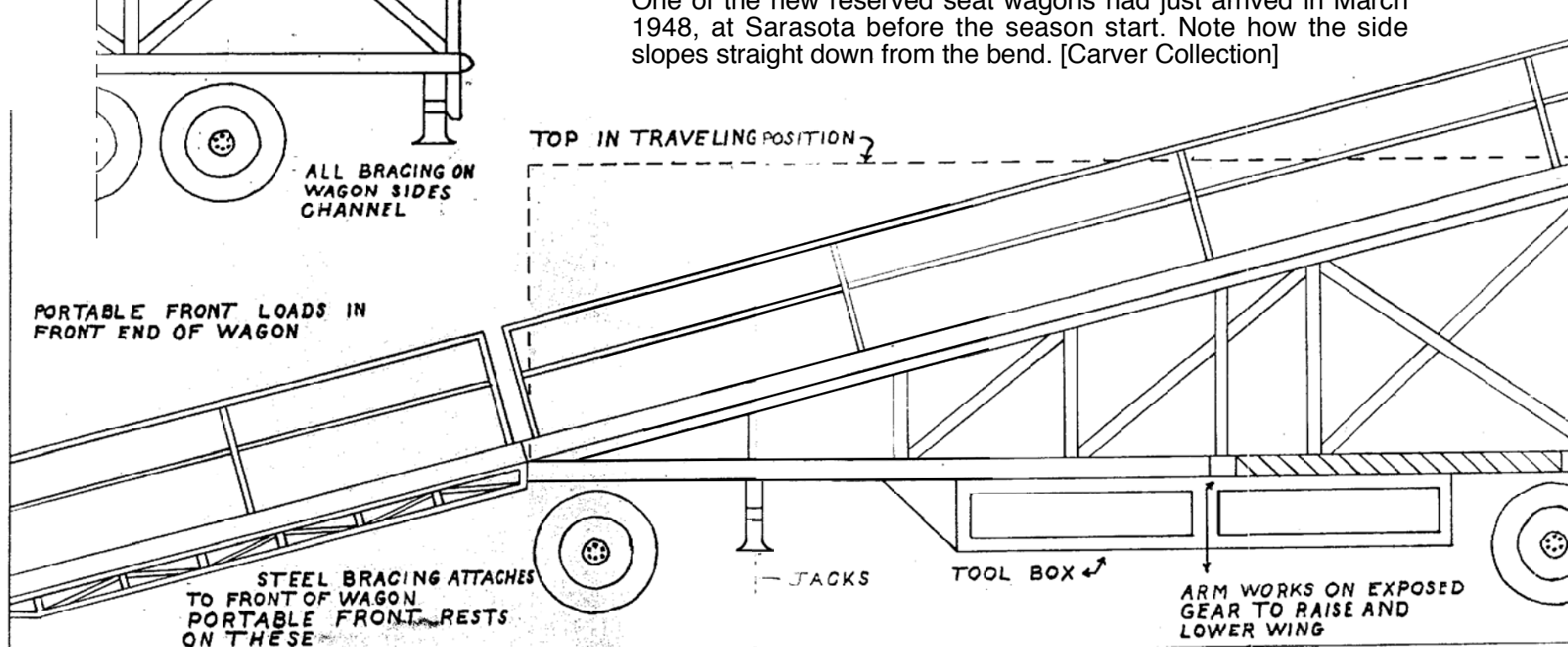
### Mechanized Seat Wagon

|   |                  |                                |                                |
|---|------------------|--------------------------------|--------------------------------|
| DATE: 1948                                | SCALE: 1/4" = 1' | SCANNED & REVISED:<br>01/16/03 | Pg 1 of 4                      |
| <b>Circus Model Builders</b>              |                  |                                |                                |
| Drawn By<br>William Cooker, Jr. - CMB 503 |                  |                                | DRAWING NUMBER<br><b>#0176</b> |

BRACING RUNS FULL  
LENGTH OF WING



PORTABLE FRONT LOADS IN  
FRONT END OF WAGON



One of the new reserved seat wagons had just arrived in March 1948, at Sarasota before the season start. Note how the side slopes straight down from the bend. [Carver Collection]

**RBBB**  
**Mechanized Seat Wagon**

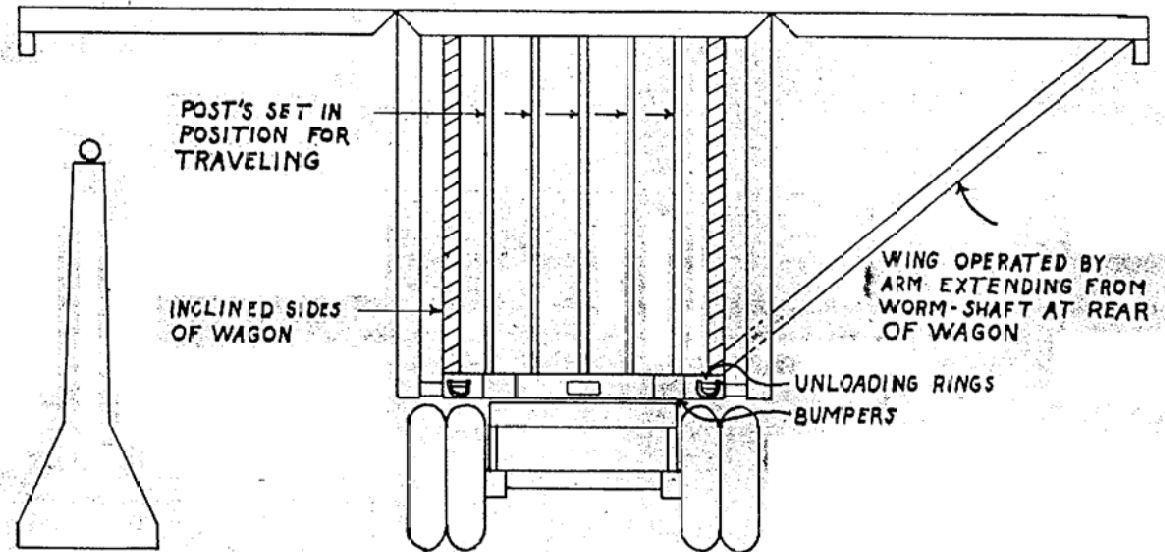
Pg 2 of 4

SCALE: 1/4" = 1'

SCANNED & REVISED:  
01/16/03

DRAWING NUMBER  
**#0176**

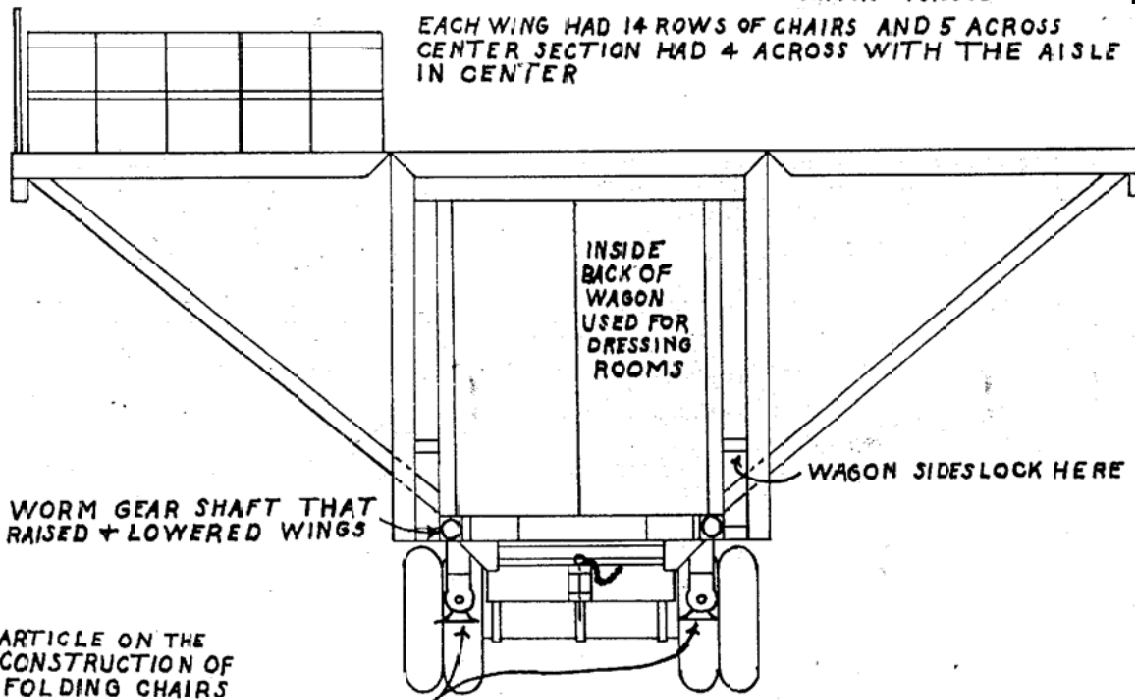
FRONT VIEW OF WAGON SHOWING WINGS IN FOLDED POSITION FOR TRAVELING  
 + WINGS IN OPEN POSITION BEFORE FRONT WAS LOWERED



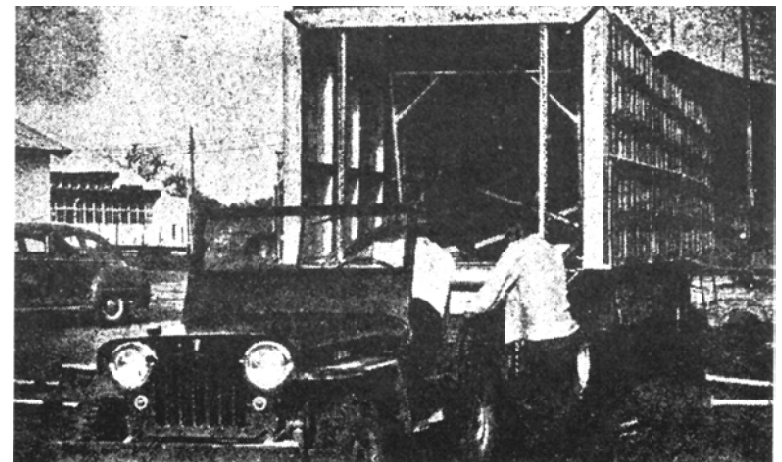
WAGON TONGUE

Front View - Open & Closed View of Wings

EACH WING HAD 14 ROWS OF CHAIRS AND 5 ACROSS  
 CENTER SECTION HAD 4 ACROSS WITH THE AISLE  
 IN CENTER



Rear View - Open & Closed View of Wings



Seat Wagon on RBBB in 1948 showing folded appearance.  
 [Carver Collection]

ARTICLE ON THE  
 CONSTRUCTION OF  
 FOLDING CHAIRS  
 IN 1953 L.C.W.

## RBBB Mechanized Seat Wagon

Pg 3 of 4

SCALE: 1/4" = 1'

SCANNED & REVISED:  
 01/16/03

DRAWING NUMBER  
**#0176**

## Additional Data on the RBBB Seat Wagons

A good source of material and pictures on the original Seat Wagons can be found in the 1948 RBB&B Program.

The 1948 edition did not have the sloping front extension, but used a set of 6 tread steps to reach the sloping elevation on the wagon. Later on this sloping extension was added and the steps were not used, enabling the use of additional seating capacity, of eight row of seats accommodating 112 more people. On the Reserved Seat Wagon there were 13 rows of Duran upholstered folding chairs. Five chairs, per row on each wing and four chairs on the center aisle two on each side of the aisle. This made a seating capacity of 14 people per row or a total of 182 on he wagon. Additional chairs could he placed on the ground level if needed. In the model, if care is used in using scale seated figures you can, on your finished model, seat 14 people to a row.

The Blues or General Admission Wagons had the same seating capacity by row but there were 18 rows on the wagon and 8 rows on the extensions. These were 34 1/2' long by 9' wide. The Reserves were 35' long by 9' wide. All were 12' high from the ground in the back to the top floor deck.

No. 1 Blues, carried ring curbs

No. 2 Blues, No. 4 Jeep

No. 3 Blues, chairs and supplies.

No. 4 Blues, Big Top Supply

No. 5 Reserves, Big Top Supply

No. 6 Reserves, No. 3 erector Jeep

No. 7 Reserves, trunks

No. 8 Reserves, trunks and rigging

No. 9 Reserves, air compressor Jeep

No. 10 Reserves, trunks

No. 11 Reserves, trunks and props

No. 12 Reserves, trunks and props

No. 13 Reserves, trunks and props

No. 14 Reserves, light supply and cable (width only 8')

No. 15 Reserves, trunks

No. 16 Reserves, trunks

No. 17 Reserves, trunks and rigging

No. 18 Reserves, Doctor's supplies and rigging

No. 19 Reserves, trunks and rigging

No. 20 Reserves, Trunks

No. 21 Reserves, trunks

No. 22 Reserves, Wardrobe supply

No. 23 Blues, Props supply

No. 24 Blues, Clown props, trunks

No. 25 Blues, Clown props, trunks

No. 26 Blues, Trunks, six dogs and a pig in the possum belly.

(Credit for, the above contents to former CMB member Dyer M. Reynolds, formerly of Pawtucket, Rhode Island.)

On the Ringling Train for the Season of 1955, the Second Section carried 4 Flats of Seat Wagons, 2 wagons to each flat. The Third Section carried 9 Flats of Seat Wagons, 2 wagons to each flat. The two other flat cars of this section carried wagon No. 1 Sanitation, wagon No. 2 Sanitation, wagon No. 145 Wardrobe, wagon No. 29 Bandstand, and wagon No. 146 Wardrobe. That year of 1955 the complete train consisted of 47 Flats, 8 stock cars and 25. Sleepers or Pullmans.

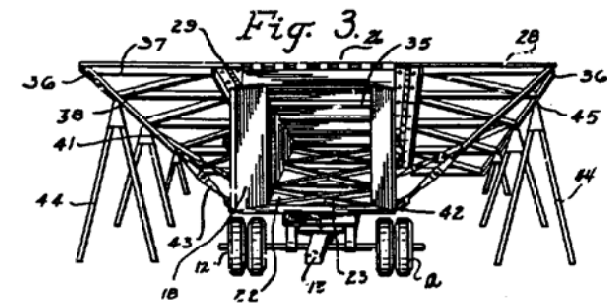
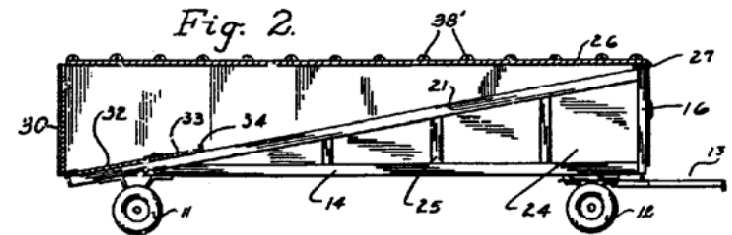
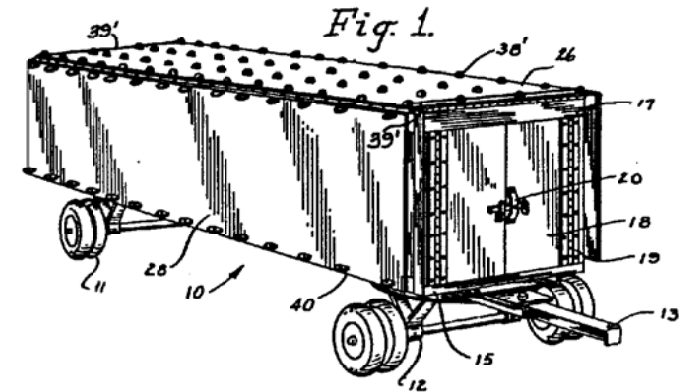
April 21, 1953

A. M. CONCELLO  
PORTABLE SEATING STRUCTURE

2,635,889

Filed Dec. 3, 1947

2 SHEETS—SHEET 1



INVENTOR  
ARTHUR M. CONCELLO  
BY  
James W. Paxton  
Agent

Copy of the Patent Drawing

## RBBB Mechanized Seat Wagon

Pg 4 of 4

SCALE: 1/4" = 1'

SCANNED & REVISED:  
01/16/03

DRAWING NUMBER  
#0176