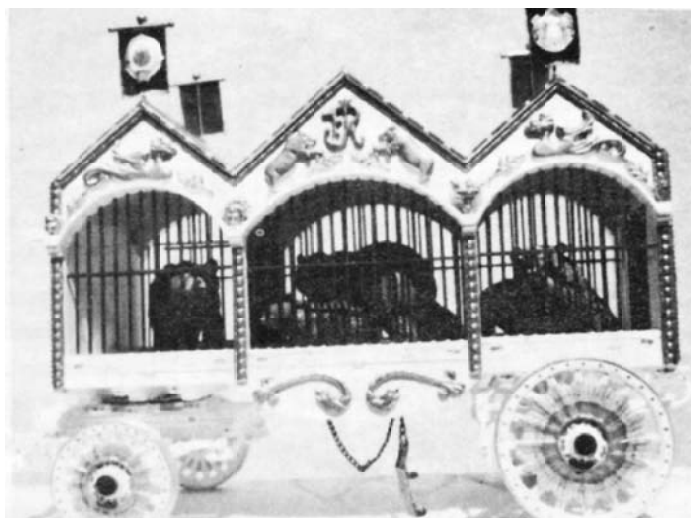




Rear View



Side View



Front View

### COTTAGE CAGE MATERIAL FROM ROBERT MIEFERT

This is the second of a Series of Drawings of The John Robinson Cottage which Robert Miefert has been kind enough to do for The Circus Model Builders. The first one of this series having appeared in the Aug. Sept., 1964 issue. (Plan #0174)

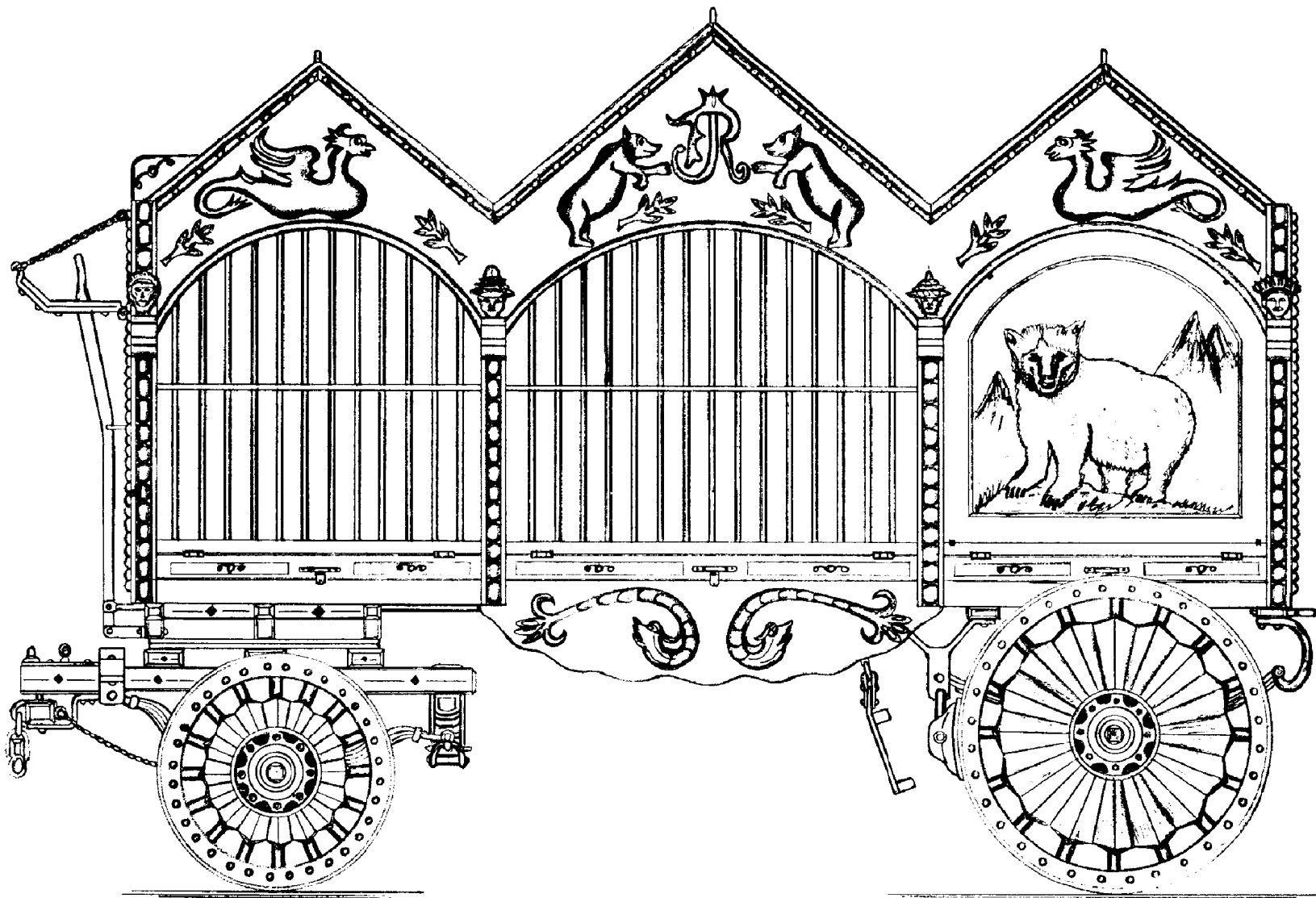
Mr. Miefert has completed a number of these Cottage Cages and had them on display at The National Gathering in Greensburg. These models are magnificent pieces of construction.

They were unusual as to the odd roof construction and "Bay Window" effect which were most used; however, the No. 66 did not have the bay window effect. We can readily believe this to be a Bear Cage with the carvings and Panel Paintings all pointing up this fact. Some of the larger Cages were 20 feet long, however, the No. 66 was 15 feet long. The Wood Carvings were quite unique and according to the records were made by imported Italian Wood Carvers. Some records show that sixteen of these cages were constructed but Mr. Miefert feels there were more, based on his research.

Cage No. 66 was, as noted above, undoubtedly a Bear Cage and was a Cottage Cage but did not have a Bay Window built on sides as the majority of these cages did. This Cage was 15 feet long, and 6 feet wide with 3 compartments with bar partitions. All bars were covered with light wood panels with paintings of animals. Most of the cages had back doors on them and these too were covered with light panels, which, of course, were removable for menagerie viewing as they were generally left on for The Robinson Circus Parades.

Photos at above are the 3/4" scale models from this mouth's plan built by Robert Miefert

John Robinson Circus Cottage Cage Wagon No. 66			
DATE: 1910/20s	SCALE: 1/2" = 1'	SCANNED & REVISED: 03/08/04	Pg 1 of 3
Circus Model Builders			
Drawn By Robert Miefert, CMB #919			DRAWING NUMBER <b>#0177</b>



Side View

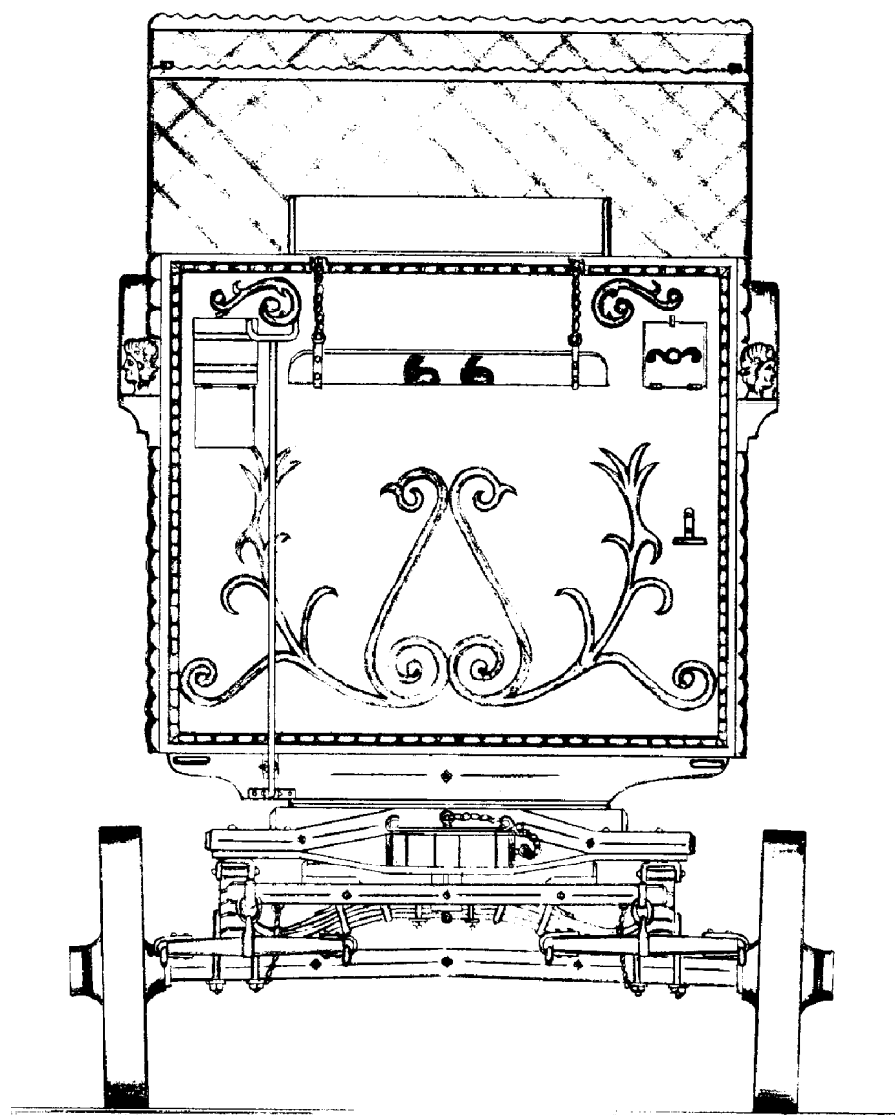
**John Robinson Circus  
Cottage Cage Wagon No. 66**

Pg 2 of 3

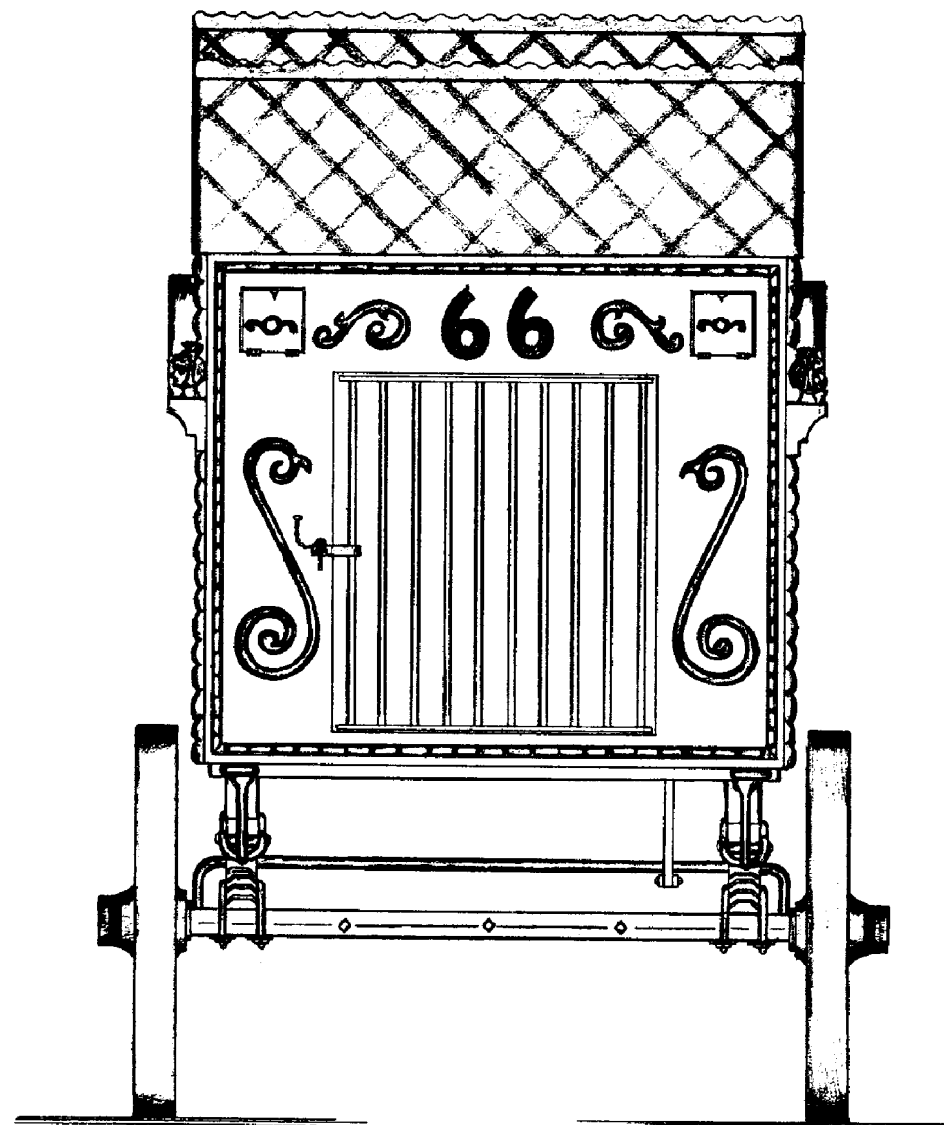
SCALE: 1/2" = 1'

SCANNED & REVISED:  
03/08/04

DRAWING NUMBER  
**#0177**



**Front View**



**Rear View**

**John Robinson Circus  
Cottage Cage Wagon No. 66**