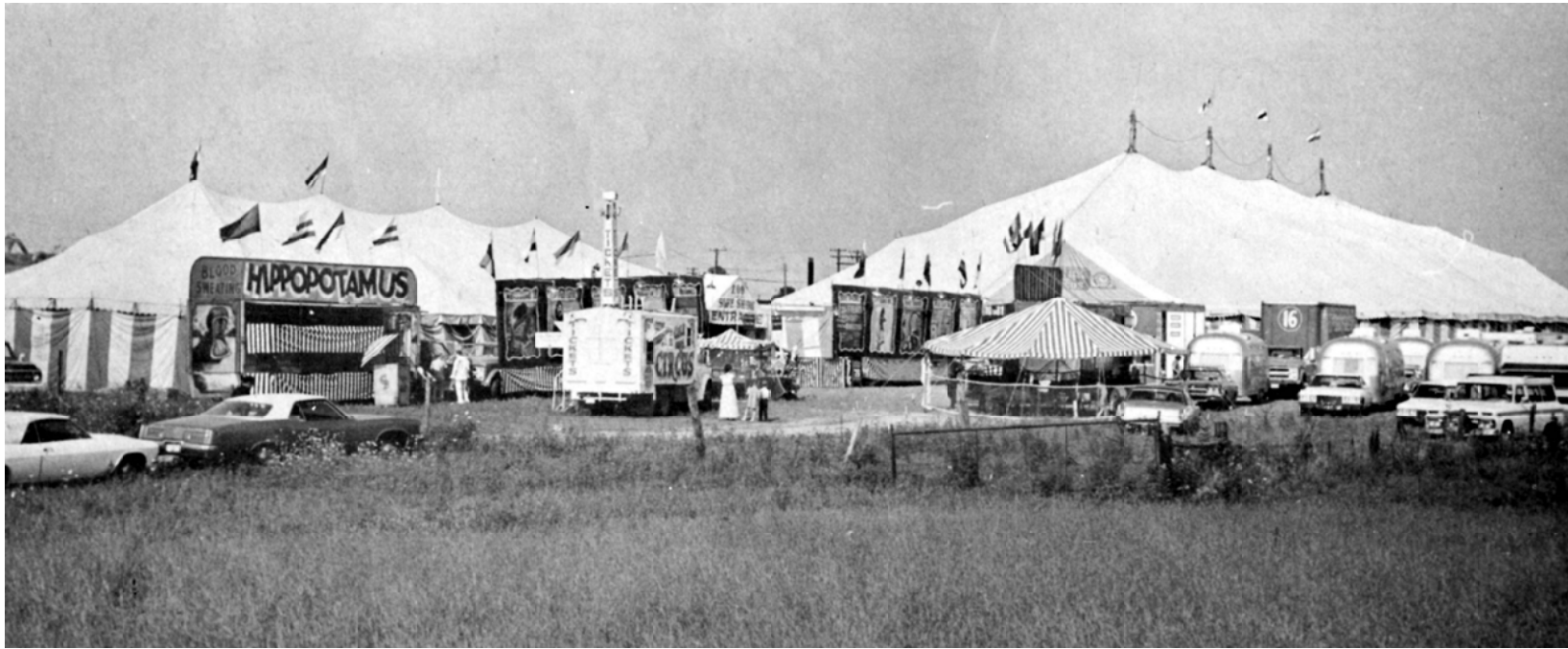


Photo 1



This particular construction plan is not really a plan in the normal sense, but rather a pictorial set of ideas especially for the younger members of the Circus Model Builders who may never have seen a rail show, except in movies or photos in the Little Circus Wagon, and who relate more to the truck shows of recent years.

Member Bill Rhodes of Louisville, Ky. happened to take a unique set of photographs in his hometown during the August 1973 appearance of the Clyde-Beatty Cole Bros. show out of Deland, Fla. This 30-truck show is typical of the circuses that plied the highways after Ringling and Clyde Beatty left the rails in the 1950's ... at least as tented rail shows.

Many members in their late 20's and early 30's have never seen a real railroad circus. They relate to these monsters of the highway and in many cases, they may have spent several days moving with the show to various locations in their areas.

In the next 10 years, it is conceivable that those of us who have fond memories of the rail shows will be few and far between and the Circus Model Builders will be dominated by those members who are interested in the unique way a showman can cut up a semi trailer for various uses. The photos and measurements that are taken on today's lot will be building plans for future Circus Model Builders.

Bill started taking his photos as the evening performance was beginning. He took them from a large mound of ground near the show lot, returning each half hour to take another photo. At the end of the five half hours, we have the photos found on the following pages.

Photo 1 - The Big Top band is blaring out the music for Dave Hoover's wild lion and tiger act under the direction of Charles Schlarbaum and half a dozen musicians, some circus fans, some members of the local musicians union. A few folks remain on the nearly deserted midway. The side show top is right behind Big Otto, the hippo and his pit show and in line with the two bannerline trucks. The old Sparks ticket wagon, now mounted on a truck, with its pylon on top, is getting ready to move as the ticket sellers bundle up the bills from today's take.

Clyde Beatty - Cole Bros. Truck Show Tear Down

DATE: 1973

SCALE: None

SCANNED & REVISED:
08/20/2002

Pg 1 of 4

Circus Model Builders

Drawn By
Tom DeWitt & Bill Rhodes

DRAWING NUMBER
#0295

Photo 2



The grab joint is about to come down, and Freddy Logan, sensing he will give no more pony rides, is getting his charges together for their trip down the road. To the right of the photo are the performers' Airstream trailers hooked to their tow vehicles and ready to roll.

Photo 2 - The front door is rapidly disappearing. The truck carrying Big Otto is already on the road, and the side show banners have been folded up for travel. The side show tent is on the way down and the canvas truck stands ready and waiting. On top of the ticket wagon, one of the workers folds down and secures the pylon. The Marque is loaded and Freddy Logan's pony ride top is ready to be folded and tucked away. Behind the collapsed ride top is the semi which carries the ape pit show, also folded and ready to roll. Ahead of that is the midway juice joint, serving the candy butchers working the inside show. A kinker, with a brief break from the show, hurriedly packs something into her car for the night ride. Inside Truck No. 16, a driver sleeps at the wheel, getting some rest before the night run.

Photo 3 - It's all out and over, as the satisfied circus patrons head for their cars and home. On the far right, the water tank truck for Big Otto uses its canvas hoist to load the last of the sideshow canvas on truck 30, loaded with the jacks, stringers and blues already stripped from the Big Top. The White Ticket Wagon is already on the roll, as are several of the performers

rigs. The ape pit show is on the roll, leaving the midway juice joint to squeeze any last change from the patrons. In the door of the Big Top can be seen the bulk of an elephant ready to go about his teardown duties.

Photo 4 - An hour later the contents of the Big Top have been removed and the quarter poles have dropped, loaded already on truck 60 at the far left of the photo. The Beatty-Cole seat wagons have exited the Big Top and are lining up ready for the night trip, their drivers working with the rest of the teardown. No. 11 is closed up and ready for the trip, while the truck driver in No. 16 still sleeps. The water truck with the canvas hoist moves into position to load the Big Top canvas sidewall, while the rig of a show boss awaits its driver.

Photo 5 - It's dusk and a seat wagon leaves for the next town with the running lights ablaze. The Big Top billows down and the canvas hoist is poised for loading.

The canvas crew will unlace the huge sections of the tent and fold them into long snake like sections. The spool canvas truck will hook onto one end and the automatic loading system will reel in the big top. But it will be close to 11 p.m. and dark, when this operation take place.

We hope those members who like the truck shows appreciate these

Clyde Beatty - Cole Bros. Truck Show Tear Down

Pg 2 of 4

SCALE: None

SCANNED & REVISED:
08/20/2002

DRAWING NUMBER
#0295

Photo 3

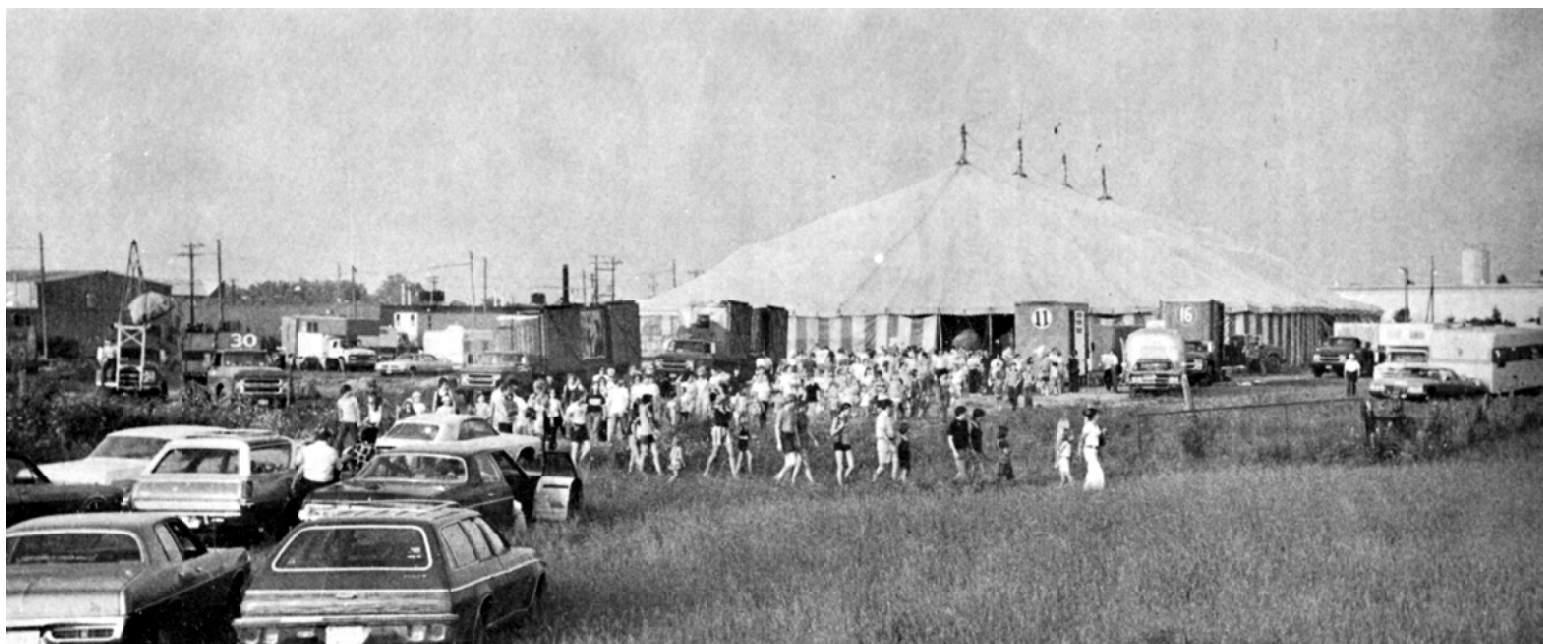
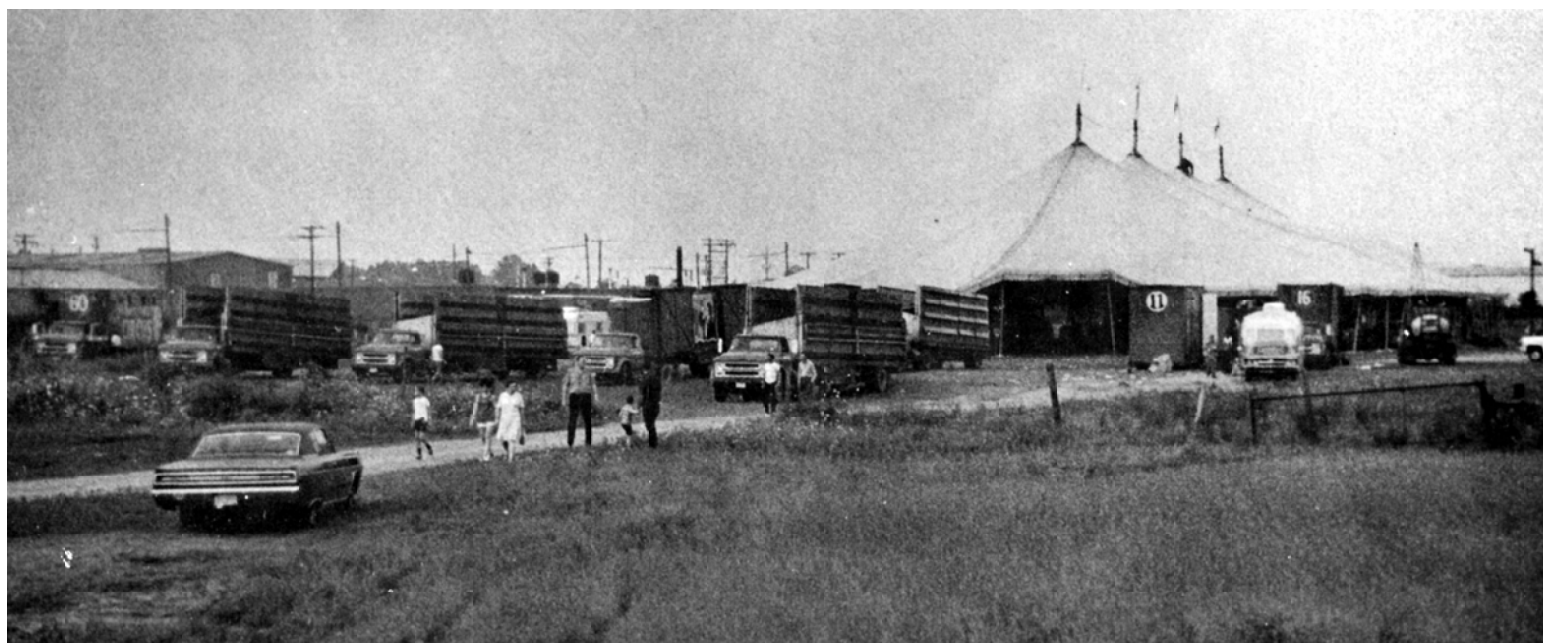


Photo 4



**Clyde Beatty - Cole Bros.
Truck Show Tear Down**

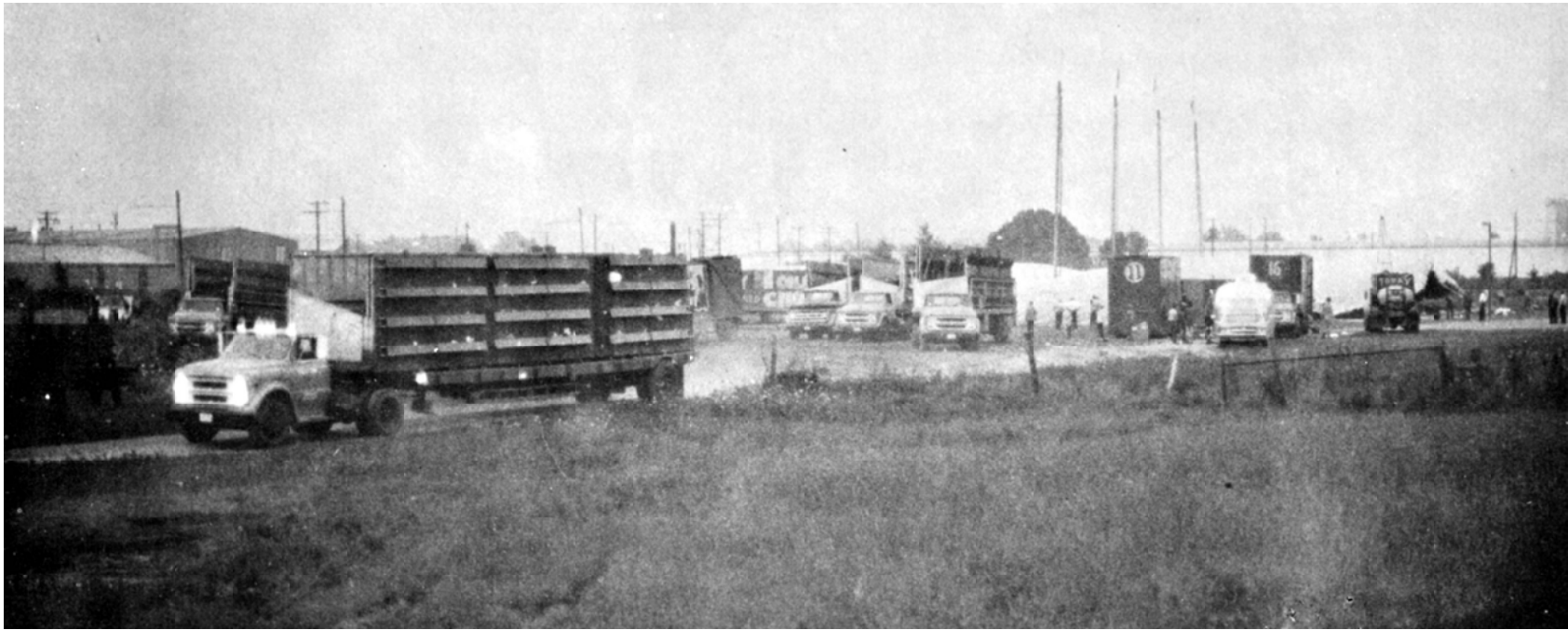
Pg 3 of 4

SCALE: None

SCANNED & REVISED:
08/20/2002

DRAWING NUMBER
#0295

Photo 5



classic photo, and we are indebted to Bill Rhodes who photographed them. We plan to run other stories and construction hints on truck shows in the future and encourage members to send in what ideas they may have. We are moving into the "second generation" of this hobby... those of us who have never seen a street parade and those of us whose only memory of Hagenbeck Wallace is a colorful litho. There are some of us who remember maybe seeing the Ringling Railroad Show in the 1950's ... other than a movie... but we must keep in mind if we want to extend this hobby into a "third generation," it is going to take more than Grandpa's pretty wooden wheeled wagons and hand-carved horses to elicit more than a casual interest. It will take relevancy to the truck shows with which our children and grandchildren today relate.

**Clyde Beatty - Cole Bros.
Truck Show Tear Down**

Pg 4 of 4

SCALE: None

SCANNED & REVISED:
08/20/2002

DRAWING NUMBER
#0295