

Ladies and Gentlemen - boys and girls - children of all ages! Presenting to you for your modeling enjoyment the most controversial and most publicized wagon to ever grace any historic circus museum, the famous Buffalo Bill ticket wagon.

The drawing presented on the next few pages was drawn by Mid State Associates Inc. of Baraboo, WI, in 1985. As noted elsewhere, it is NOT an exact blueprint but rather a guide to aid the Circus World Museum staff in the restoration (or should we say resurrection?) of this decrepit old "chicken coop".

Considering what was left of the wagon it is truly amazing that any sort of plan could be drawn at all. The wagon underwent many changes throughout its long and varied history including metal sheeting outside, the changing of windows around, and the complete loss of the 3 ticket windows in the back, not to mention the addition of chicken wire. Keep this in mind as you view the restored wagon as there will be minor discrepancies between this plan and the wagon itself.

The wagon has had a long history seeing service on many shows. It was originally built for Barnum & Bailey around 1898 and was taken with them on their European tour. At that time it had wood sides and was painted red. It was later used by Buffalo Bill's Wild West on their tour of Europe.

At that time it appears to have been painted white. Returning back to the States in 1907 it saw service on Buffalo Bill-Pawnee Bill Wild West Show, Sells-Floto Circus, Gollmar Bros. Circus, Miller Bros. 101 Ranch Wild West, and Fred Buchanan's Robbins Bros. Circus. It later saw service on the Bradley farm in Rochester, Ind. as a chicken coop. It was there that it was discovered by the Circus World Museum of Baraboo.

It was acquired in 1969 by the museum but due to many technical difficulties, not the least of which being money, it sat unrestored. Due in part to a contribution by Circus World Museum Inc. and a VERY generous \$15,000 donation from the Baraboo Industrial Expansion Corp. work was begun in October 1985 to restore the ticket wagon to its former splendor.

I had the pleasure of viewing the wagon under re-construction over the several months. Mary Gauger, veteran wagon-master, gave me a personal "tour" of the wagon at various stages of construction.

The main frame and upright braces are all made of oak and are all held in place by mortise and tenon joints, just as the craftsmen did it nearly 100 years ago.

The upright braces are covered over by tongue and grooved car siding (reversed) to give the outside a smooth appearance. As much of the original wagon as possible was used in the restoration. The inner wheel wells were bent in place by being steamed, a practice very seldom used anymore.

The end results of everybody's efforts? Amazing-simply amazing!



This is how the wagon looked in 1976. It would be ten years before it would be restored.



The photo to the right was taken on the Barnum & Bailey Circus in 1905. It illustrates a similar rear view of the Buffalo Bill ticket wagon.

## Buffalo Bill's Ticket Wagon

DATE: 1907

SCALE: 1/2" = 1'

SCANNED & REVISED:  
02/26/04

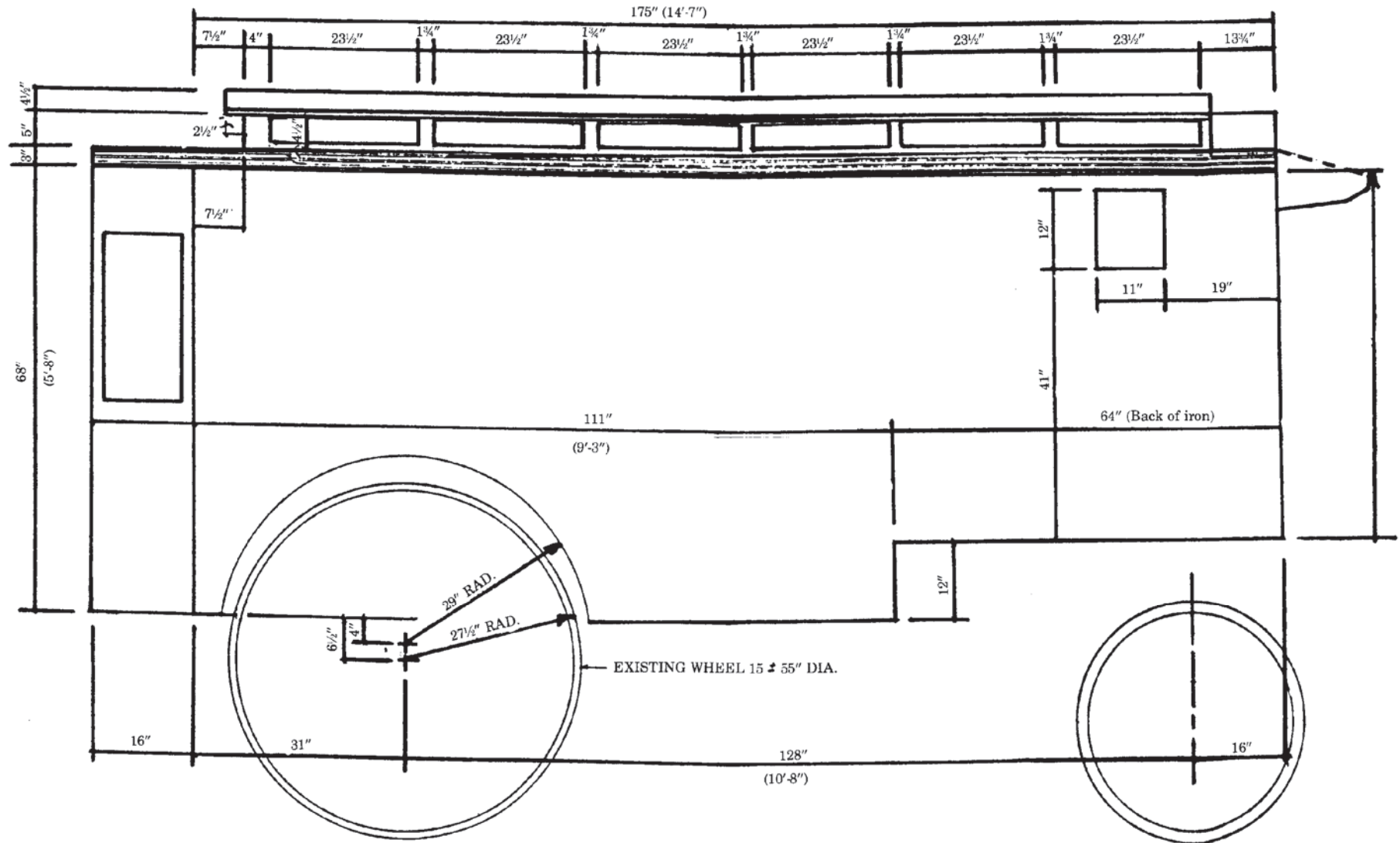
Pg 1 of 5

## Circus Model Builders

Drawn By  
Steve Flint

DRAWING NUMBER

#0319



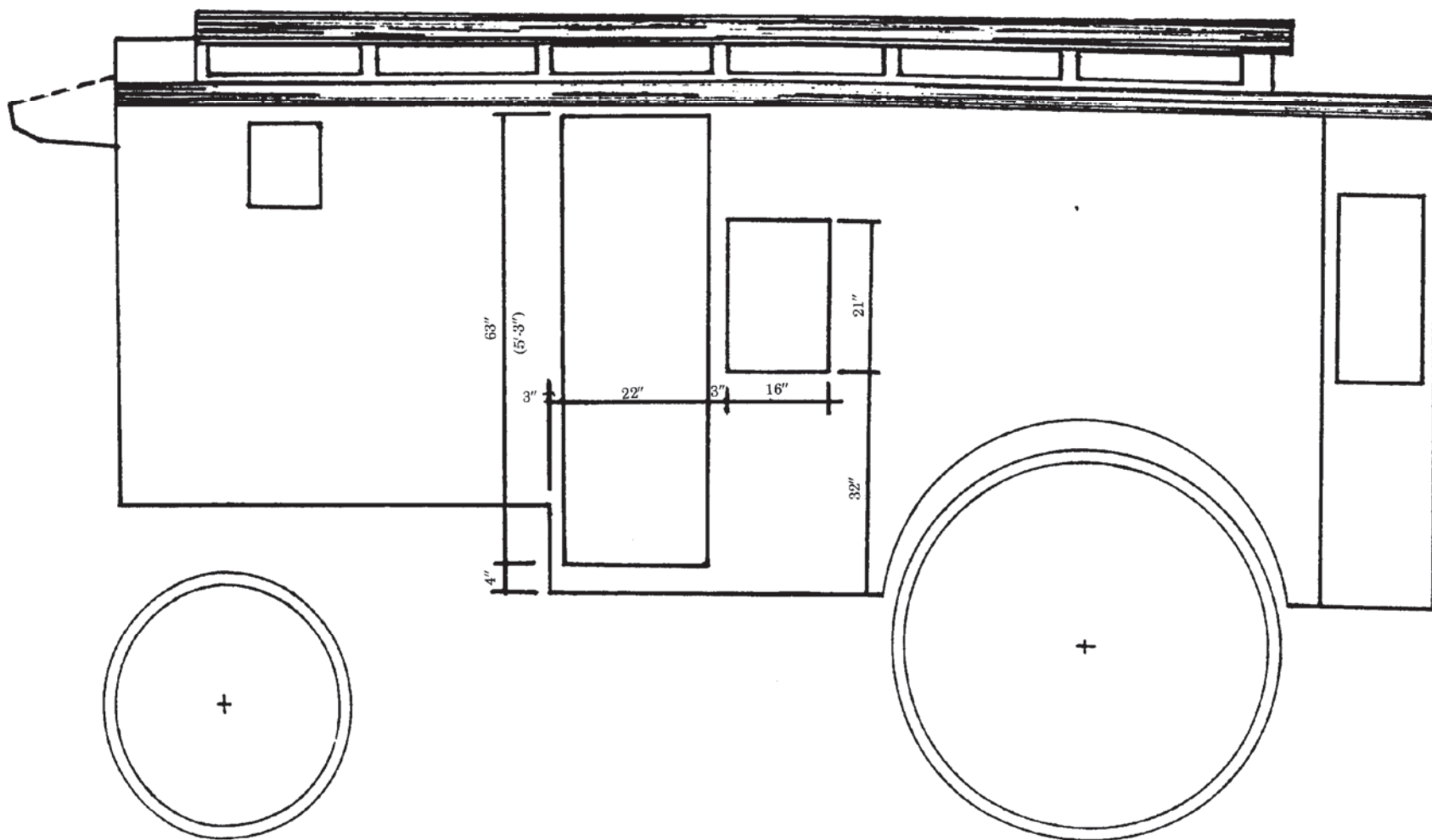
## Buffalo Bill's Ticket Wagon

Pg 2 of 5

SCALE: 1/2" = 1'

SCANNED & REVISED:  
02/25/04

DRAWING NUMBER  
**#0319**



## Buffalo Bill's Ticket Wagon

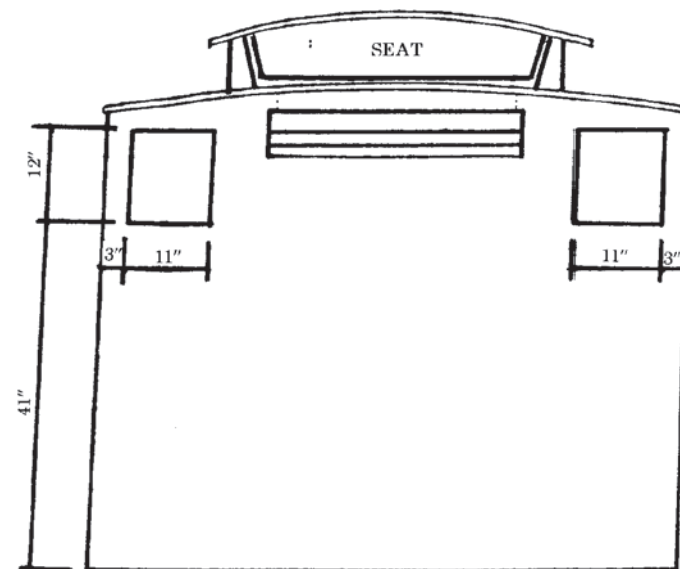
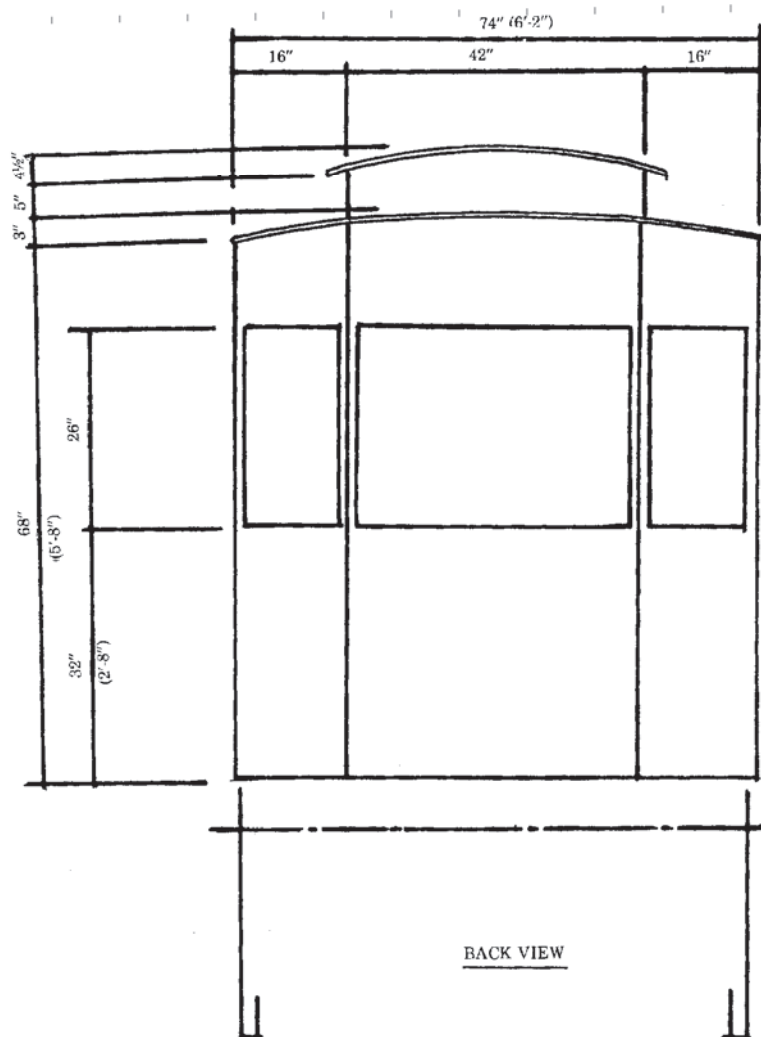
Pg 3 of 5

SCALE: 1/2" = 1'

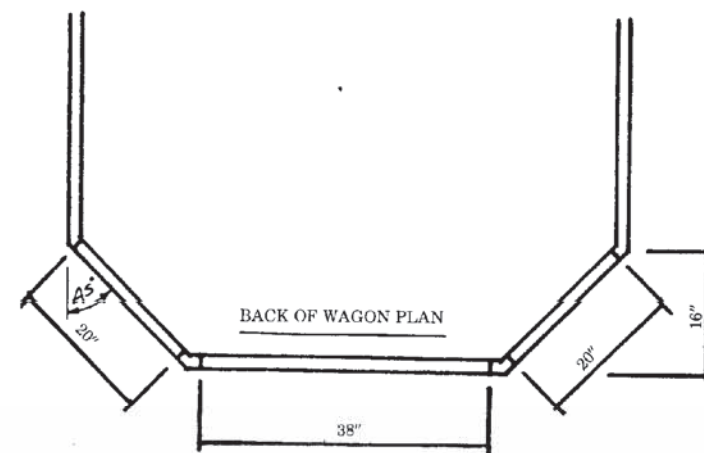
SCANNED & REVISED:  
02/25/04

DRAWING NUMBER  
**#0319**





FRONT VIEW



## Buffalo Bill's Ticket Wagon

Pg 4 of 5

SCALE: 1/2" = 1'

SCANNED & REVISED:  
02/25/04

DRAWING NUMBER  
**#0319**

### Note:

These drawings were a composite prepared from actual field measurements where possible and from scaled photos. It is intended to represent the wagon as originally constructed.



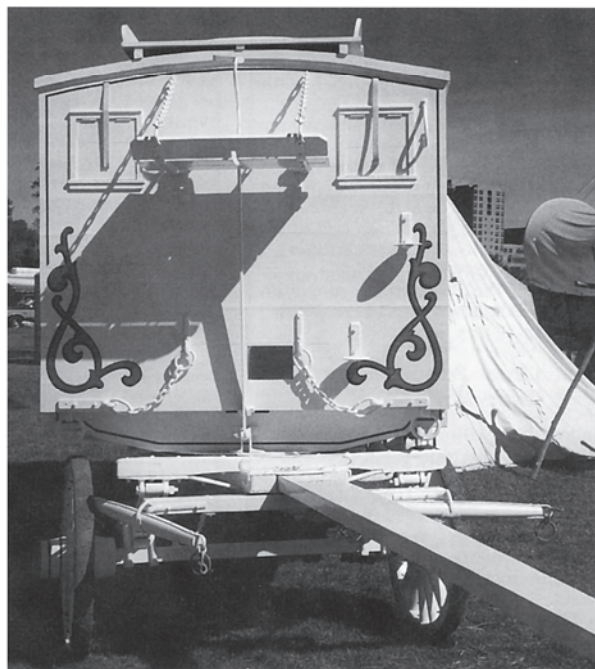
Left Side



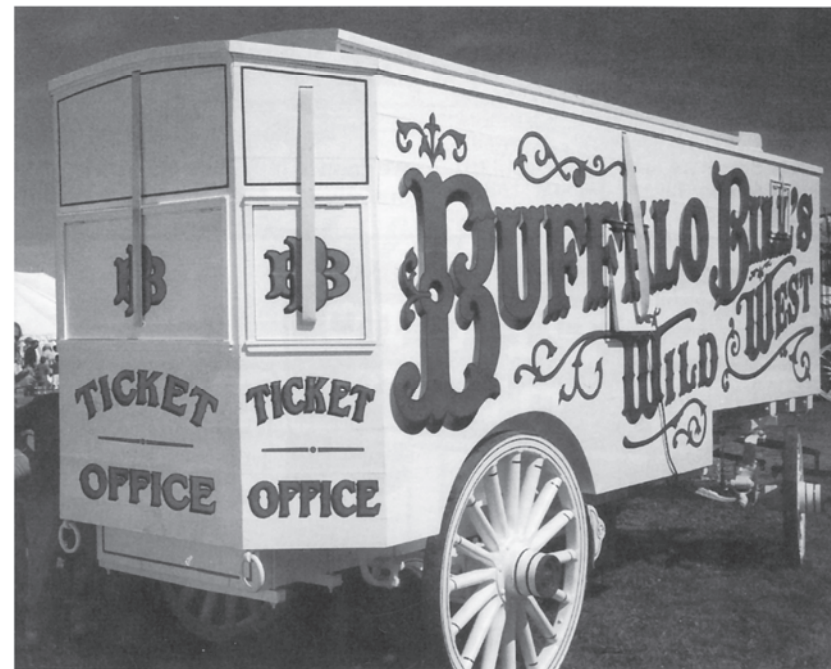
Right Side



Rear View



Front View



Rear Detail Photo

### Color Scheme

Wagon Body and Undercarriage - White  
 Lettering and Numerals are Gold outlined in Red. Shadows on sides are Light Blue on large lettering. Drop shadows on smaller lettering rear, etc. appears Black. Striping on wagon and wheels is Red. Red wheel hub.

Photos on this page by Jim Anderson, CMB 4049.

### Buffalo Bill's Ticket Wagon

Pg 5 of 5

SCALE: 1/2" = 1'

SCANNED & REVISED:  
02/25/04

DRAWING NUMBER  
#0319